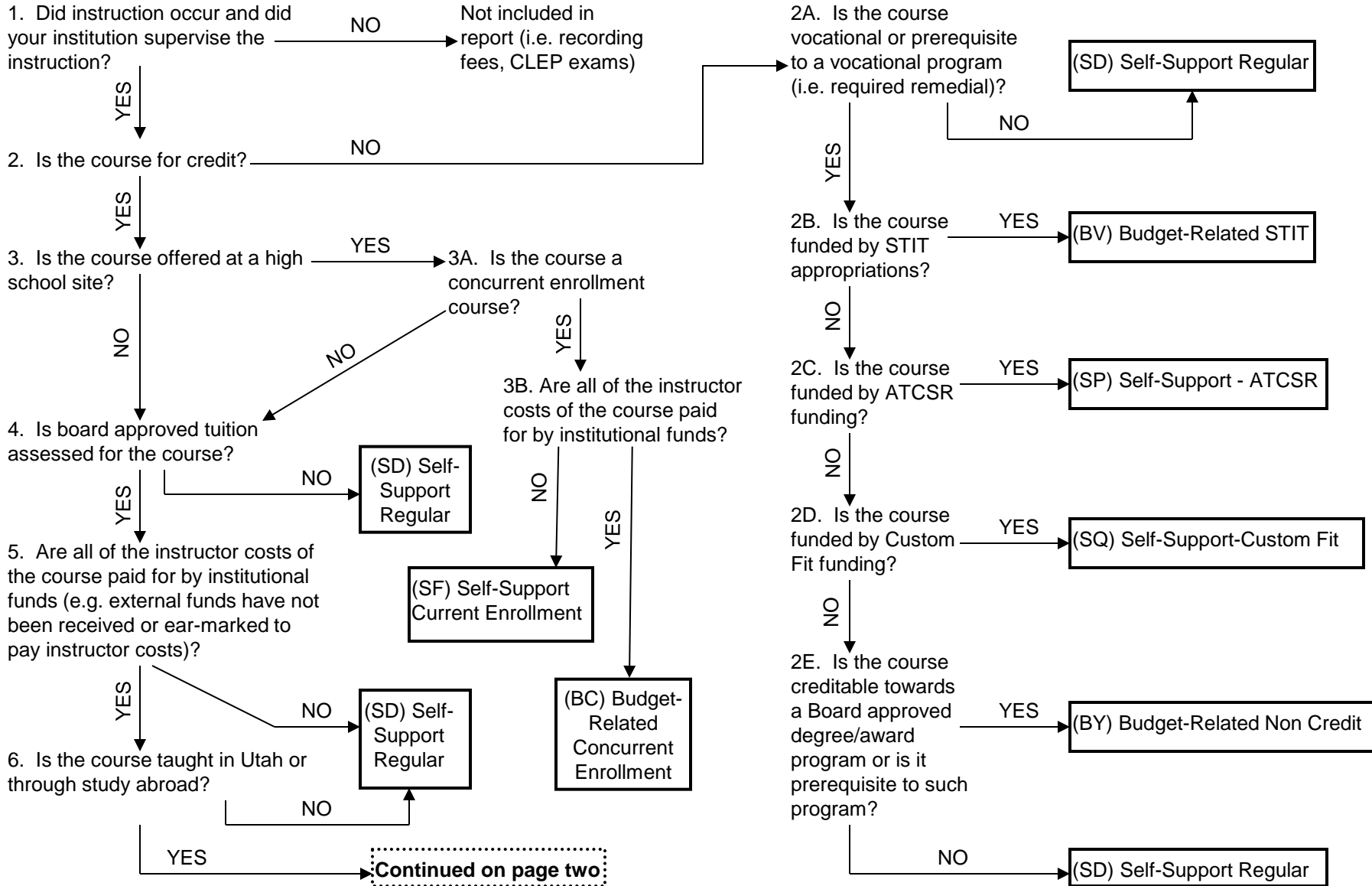


Utah System of Higher Education

Enrollment Category Decision Tree



Utah System of Higher Education

Enrollment Category Decision Tree

Page 2

Continued from page one

YES

7. Is the course section part of regular curriculum and taught on a full-term basis or equivalent to a full-term basis or until a defined competency is achieved?

NO

(SD) Self-Support Regular

YES

8. Is the course level 1000 or above (non-remedial)?

NO

8A. Is the course taught by the UofU, SUU, USU main campus, or USU branch campus or C.E. location where an equivalent course is offered by a USHE community college?

YES

(SM) Self-Supporting Remedial

YES

NO

(BU) Budget-Related Remedial

9. Is the course section offered to the general public not primarily intended for members of particular groups (i.e. companies, school district courses for teachers, in-service training)?

NO

9A. Was the course developed specifically for a particular business or organization?

YES

(SD) Self-Support Regular

NO

YES

9B. Are the course enrollees predominantly non-matriculated employees of the institution?

NO

(BA) Budget Related Regular

YES

10. Is course a correspondence course?

YES

(SD) Self-Support Regular

NO

11. Is the course for concurrent enrollment students?

YES

(BC) Budget-Related Concurrent Enrollment

NO

(BA) Budget-Related Regular