

Tab A – Executive Summary



UTAH SYSTEM OF
HIGHER EDUCATION

Building a Stronger State of Minds

UTAH SYSTEM OF HIGHER EDUCATION 2014 DATA BOOK

The USHE Data Book is a compilation of reports on the Utah System of Higher Education and its eight component institutions. Some form of this book has been published each year since the creation of the Utah State Board of Regents and the Utah System of Higher Education in 1969. The book is intended to allow the Governor's Office, Legislators and legislative staff, USHE institutions, and the general public to query particular aspects of the Utah System of Higher Education.

Information available in the USHE 2014 Data Book covers twelve different subject areas:

Degrees & Awards (Tab B)	Budget History (Tab H)
Enrollments (Tab C)	Cost Study (Tab I)
Career and Technical Education (Tab D)	Salary Comparisons (Tab J)
Tuition and Fees (Tab E)	Salary Comparisons (Tab K)
Paying for College (Tab F)	Facilities (Tab L)
Financial Information (Tab G)	Comparable institutions (Tab M)

Changes to the 2014 Version of the Data Book

Tab C – Enrollments on data collected at the end of an academic term rather than the third-week point in time data set. Select tables using third week data will continued to be reported to allow for longitudinal comparisons.

Tab B – Degrees & Awards now offers additional information made available through the NCES/IPEDS reporting system which includes unduplicated headcounts of graduates by degree level as well as data from comparative institutions regarding graduation rates.

Tab G – Financial Information categories (in table 4) were realigned to match those used by the Legislative Fiscal Analyst (LFA). Table 6 – USHE Summary of Revenues and Expenses was discontinued as part of the data book.

The USHE Data Book is designed to provide users the necessary information to perform data analyses on various data elements categorized in each of twelve tabs. If questions arise about any of the data included in this book, please contact the Office of the Commissioner of Higher Education, Department of Institutional Research and Analysis at (801) 321-7121.

Highlights include:

Tab B – Degrees & Awards

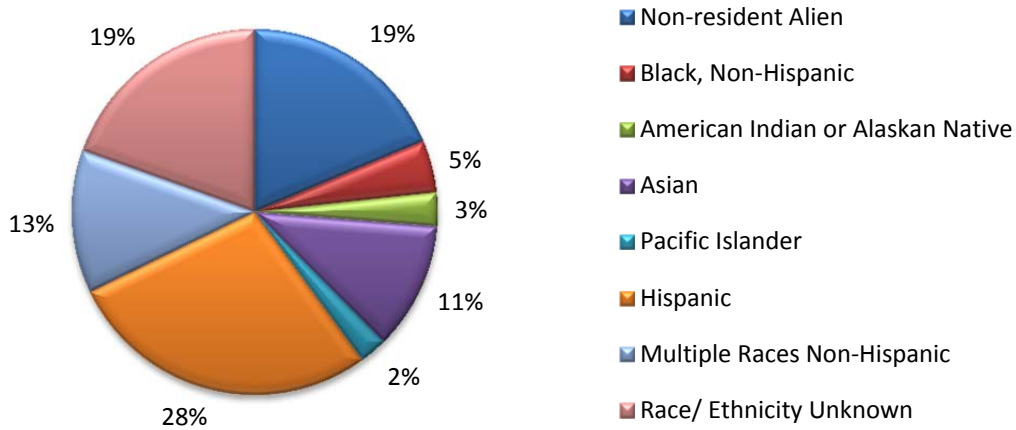
2012-13 USHE Degrees and Awards

	Cert.	Assoc.	Bacc.	Masters	Doct.	1st Prof	Total	1-yr % Change	5-yr % Change
UU	369	0	5,139	1,921	324	402	8,155	4%	8%
USU	71	851	3,557	895	105	4	5,483	-1%	16%
WSU	80	1,995	2,360	301	0	0	4,736	5%	25%
SUU	19	421	988	315	0	0	1,743	9%	29%
Snow	205	731	0	0	0	0	936	-14%	42%
DSU	384	1,132	512	0	0	0	2,028	-1%	38%
UVU	35	1,768	2,739	69	0	0	4,611	1%	41%
SLCC	564	3,485	0	0	0	0	4,049	-3%	11%
USHE	1,727	10,383	15,295	3,501	4,29	406	31,741	1%	20%

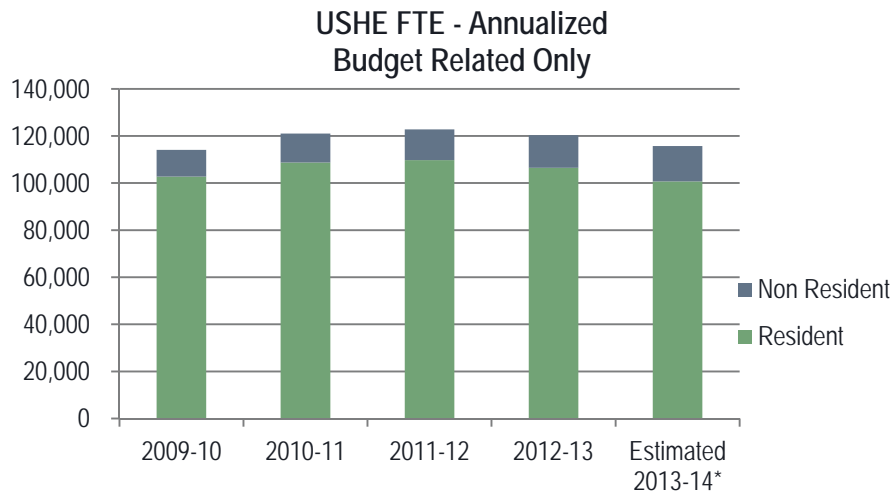
Cert.=Certificate, Short-term certificates, other awards; 1st Prof=first professional, e.g. MD, JD, etc.

Source: 2014 USHE Data Book Tab B Table 3

All Degrees Awarded to Minority Students



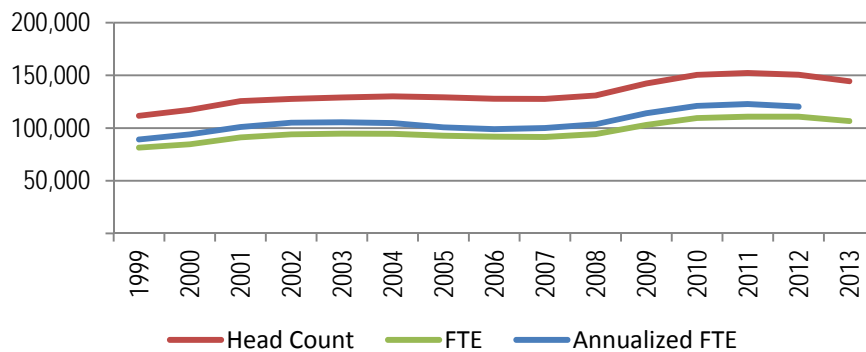
Tab – C Enrollments



2013-14 Fall THIRD WEEK FTE (Budget-related and Self-Support)

	Resident	Nonresident	Total	1-yr change	5-yr change
UU	21,629	5,304	26,933	-0.85%	10.33%
USU	17,686	2,871	20,557	-1.02%	6.00%
WSU	14,038	1,579	15,617	-6.26%	5.89%
SUU	5,286	898	6,183	-4.72%	-4.24%
Snow	3,293	288	3,581	1.25%	15.87%
DSU	5,275	909	6,184	-5.43%	11.04%
UVU	18,422	2,276	20,697	-4.25%	5.22%
SLCC	16,119	805	16,924	1.87%	-5.74%
Total	101,748	14,929	116,676	-2.27%	4.83%

Fall Third Week Enrollment History Budget - Related



Tab E – Tuition & Fees

2013-14 Annual Undergraduate ⁽¹⁾ Tuition and Fees

	Resident	Non-Resident	Resident 1-yr change	Resident 5-yr change
UU	\$7,457	\$24,019	4.5%	41.1%
USU	\$6,185	\$17,888	4.3%	39.1%
WSU	\$4,990	\$13,311	4.7%	29.5%
SUU	\$5,924	\$17,902	5.2%	47.1%
SC	\$3,220	\$10,722	4.3%	37.2%
DSU	\$4,285	\$12,307	4.8%	48.1%
UVU	\$5,086	\$14,256	6.3%	35.6%
SLCC	\$3,342	\$10,594	5.4%	25.6%
USHE Average Change			5.1%	37.9%

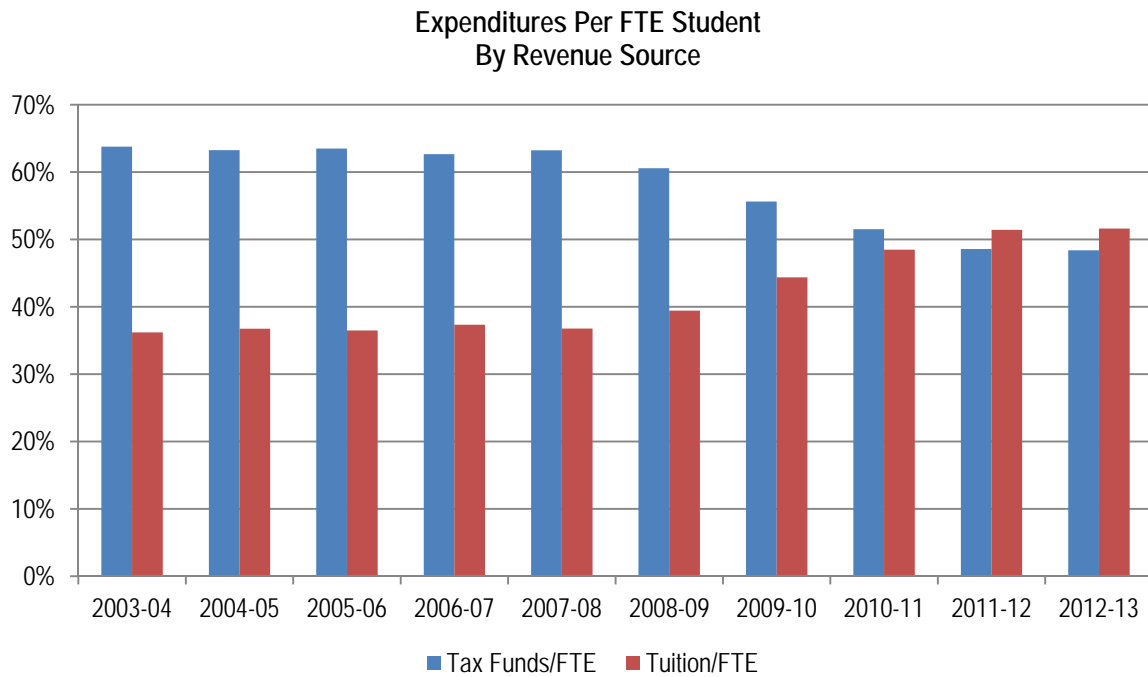
(1) Undergraduate Tuition and Centrally Administered Fees for 2 semesters at 15 credit hours.

Tab F – Paying for College

Total Resident Waivers				
	2008-09	2009-10	2010-11	2011-12
UU	\$5,804,971	\$5,459,172	\$8,659,920	\$9,881,863
USU	4,899,061	5,390,037	5,855,622	6,615,438
WSU	3,788,099	4,014,880	4,704,653	4,938,829
SUU	1,820,561	2,255,749	2,537,907	2,674,337
Snow	473,754	777,116	750,978	780,305
DSU	1,082,384	1,361,313	1,394,538	1,582,253
UVU	4,415,498	4,822,207	5,974,077	6,738,401
SLCC	1,761,603	1,934,237	2,747,378	2,398,324
Total Resident	\$24,184,736	\$26,027,231	\$32,625,073	\$35,609,750

Total Non-Resident Waivers				
	2008-09	2009-10	2010-11	2011-12
UU	\$5,079,199	\$7,122,550	\$5,207,367	\$5,390,124
USU	11,566,262	12,821,937	15,706,240	17,067,101
WSU	1,946,212	2,750,034	3,426,036	3,926,608
SUU	2,202,389	2,281,577	2,844,480	2,469,895
Snow	154,538	433,656	442,455	502,051
DSU	2,053,048	2,419,266	2,539,162	3,162,955
UVU	1,321,163	2,054,862	2,312,993	2,686,976
SLCC	762,778	669,817	786,604	1,545,064
Total Resident	\$25,156,839	\$30,688,184	\$33,265,337	\$36,750,774

Tab H – Budget History



Source: Table 9 of Tab H - Budget History

Tab J – Staffing

Regular and Adjunct Faculty FTE Change 2012-13

Institution	Regular			Adjunct		
	2013	2012	Change	2013	2012	Change
UU	1,269.2	1,288.5	-1.5%	238.0	238.5	-0.2%
USU	943.1	934.2	1.0%	134.3	138.1	-2.8%
WSU	466.8	472.3	-1.2%	376.9	394.3	-4.4%
SUU	254.2	247.2	2.8%	104.2	108.5	-3.9%
Snow	114.8	116.3	-1.3%	51.0	61.5	-17.1%
DSU	173.7	165.4	5.0%	223.0	239.0	-6.7%
UVU	575.0	544.9	5.5%	501.5	553.7	-9.4%
SLCC	362.1	363.9	-0.5%	604.2	540.6	11.8%
Total	4,159.0	4,132.7	0.6%	2,233.1	2,274.2	-1.8%