

January 14, 2015

MEMORANDUM

TO: State Board of Regents  
FROM: David Buhler  
SUBJECT: USHE – 2015 Data Book

Background

Annually, the Commissioner's Office produces a Utah System of Higher Education Data Book, which contains a comprehensive set of data tables covering a wide range of USHE topics. The 2015 version of the USHE Data Book has now been completed and is available in pdf format on the USHE web page [www.Higheredutah.org](http://www.Higheredutah.org) under the Research and Data/ Data Books menu selection (<http://higheredutah.org/databooks/>).

Tabbed Sections in the USHE Data Book include the following topics:

Degrees & Awards (Tab B)	Budget History (Tab H)
Enrollments (Tab C)	Cost Study (Tab I)
Career and Technical Education (Tab D)	Staffing (Tab J)
Tuition and Fees (Tab E)	Salary Comparisons (Tab K)
Paying for College (Tab F)	Facilities (Tab L)
Financial Information (Tab G)	Comparable institutions (Tab M)

In most cases the data provided is summarized at both the institutional and system levels.

Commissioner's Recommendation

This item is for information only; no action is required.

---

David L. Buhler  
Commissioner of Higher Education

DLB/GLS/JAC  
Attachment

**UTAH SYSTEM OF HIGHER EDUCATION  
2015 DATA BOOK**

The USHE Data Book is a compilation of reports on the Utah System of Higher Education and its eight component institutions. Some form of this book has been published each year since the creation of the Utah State Board of Regents and the Utah System of Higher Education in 1969. The book is intended to allow the Governor's Office, Legislators and legislative staff, USHE institutions, and the general public to query particular aspects of the Utah System of Higher Education.

Information available in the USHE 2015 Data Book covers twelve different subject areas:

- |  |                                 |
|--|---------------------------------|
| Degrees & Awards (Tab B)               | Budget History (Tab H)          |
| Enrollments (Tab C)                    | Cost Study (Tab I)              |
| Career and Technical Education (Tab D) | Staffing (Tab J)                |
| Tuition and Fees (Tab E)               | Salary Comparisons (Tab K)      |
| Paying for College (Tab F)             | Facilities (Tab L)              |
| Financial Information (Tab G)          | Comparable institutions (Tab M) |

The USHE Data Book is designed to provide users the necessary information to perform data analyses on various data elements categorized in each of twelve tabs. If questions arise about any of the data included in this book, please contact the Office of the Commissioner of Higher Education, Department of Institutional Research and Analysis at (801) 321-7121.

**Highlights include:**

*Tab B – Degrees & Awards*

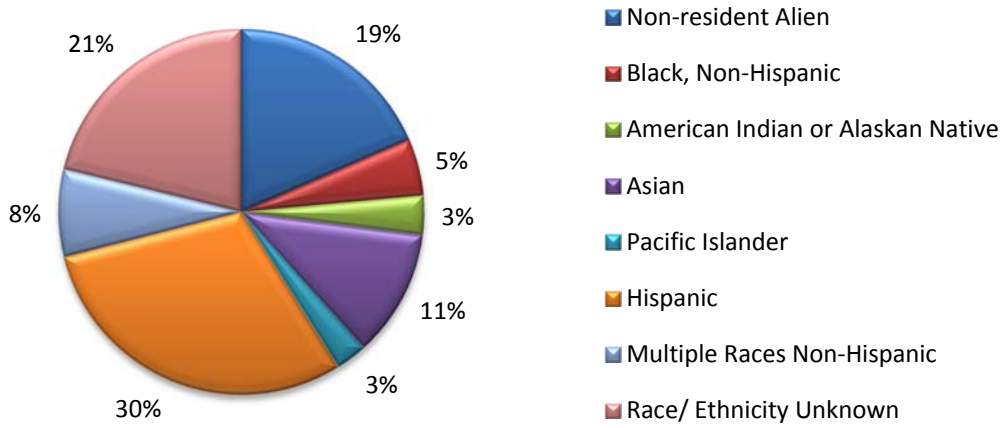
**2013-14 USHE Degrees and Awards**

	Cert.	Assoc.	Bacc.	Masters	Doct.	1st Prof	Total	1-yr % Change	5-yr % Change
UU	397	0	5,092	1,823	330	381	8,023	-2%	8%
USU	205	1,000	3,548	927	109	6	5,795	6%	36%
WSU	75	1,999	2,356	272	0	0	4,702	-1%	19%
SUU	9	337	1,000	265	0	0	1,611	-8%	4%
Snow	44	694	7	0	0	0	745	-20%	16%
DSU	344	1,150	509	0	0	0	2,003	-1%	24%
UVU	85	2,280	2,825	52	0	0	5,242	14%	52%
SLCC	646	3,782	0	0	0	0	4,428	9%	20%
<b>USHE</b>	<b>1,805</b>	<b>11,242</b>	<b>15,337</b>	<b>3,339</b>	<b>439</b>	<b>387</b>	<b>32,549</b>	<b>3%</b>	<b>21%</b>

Cert.=Certificate, Short-term certificates, other awards; 1st Prof=first professional, e.g. MD, JD, etc.

Source: 2015 USHE Data Book Tab B Table 2 and Table 3

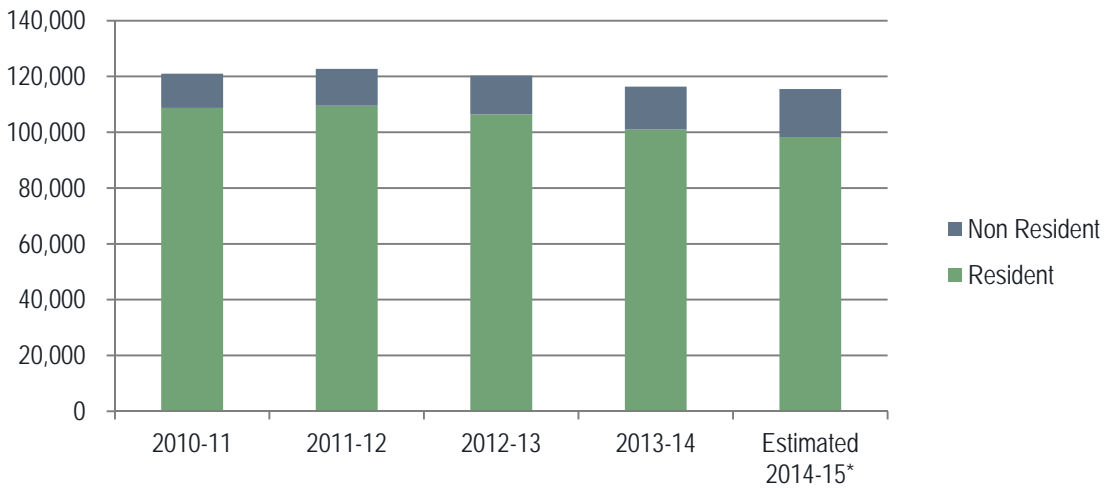
### All Degrees and Awards to Minority Students



Source: Table 5 of Tab B – Degrees & Awards

### Tab – C Enrollments

#### USHE FTE (Annualized) Budget Related Only



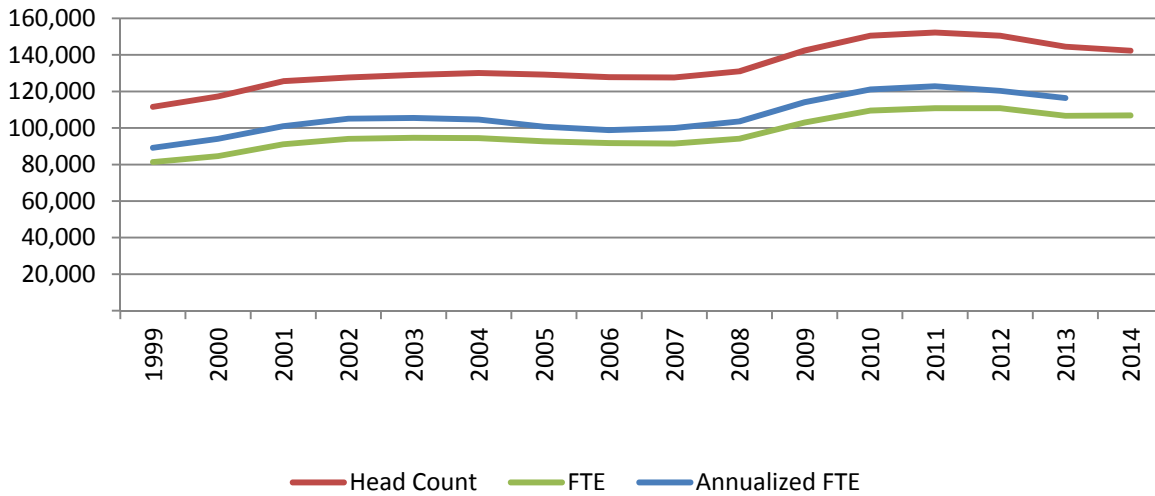
Source: Table 2 of Tab C – Enrollments

**2014-15 Fall THIRD WEEK FTE (Budget-related and Self-Support)**

	Resident	Nonresident	Total	1-yr change	5-yr change
UU	21,378	5,364	26,742	-0.71%	9.54%
USU	16,966	3,923	20,889	1.62%	7.71%
WSU	14,895	1,038	15,932	2.02%	8.03%
SUU	5,139	1,011	6,150	-0.54%	-4.75%
Snow	3,414	333	3,746	4.62%	21.22%
DSU	5,196	1,209	6,405	3.56%	15.00%
UVU	18,681	2,655	21,335	3.08%	8.47%
SLCC	14,895	1,038	15,932	-5.86%	-11.26%
Total	100,563	16,570	117,133	0.39%	5.25%

Source: Table 11 of Tab C – Enrollments

**Fall Third Week Enrollment History  
Budget - Related**



Source: Enrollment History – Fall Enrollment Third Week

Tab E – Tuition & Fees

2014-15 Annual Undergraduate <sup>(1)</sup> Tuition and Fees				
	Resident	Non-Resident	Resident 1-yr change	Resident 5-yr change
UU	\$7,835	\$25,058	5.1%	36.4%
USU	\$6,383	\$18,490	3.2%	32.2%
WSU	\$5,183	\$13,837	3.9%	26.8%
SUU	\$6,138	\$18,596	3.6%	43.8%
SC	\$3,388	\$11,342	5.2%	33.3%
DSU	\$4,456	\$12,792	4.0%	41.7%
UVU	\$5,270	\$14,802	3.6%	30.2%
SLCC	\$3,468	\$11,010	3.8%	24.3%
USHE Average Change			4.0%	33.6%

(1) Undergraduate Tuition and Centrally Administered Fees for 2 semesters at 15 credit hours.

Source: Table 3 of Tab E – Tuition & Fees

Tab F – Paying for College

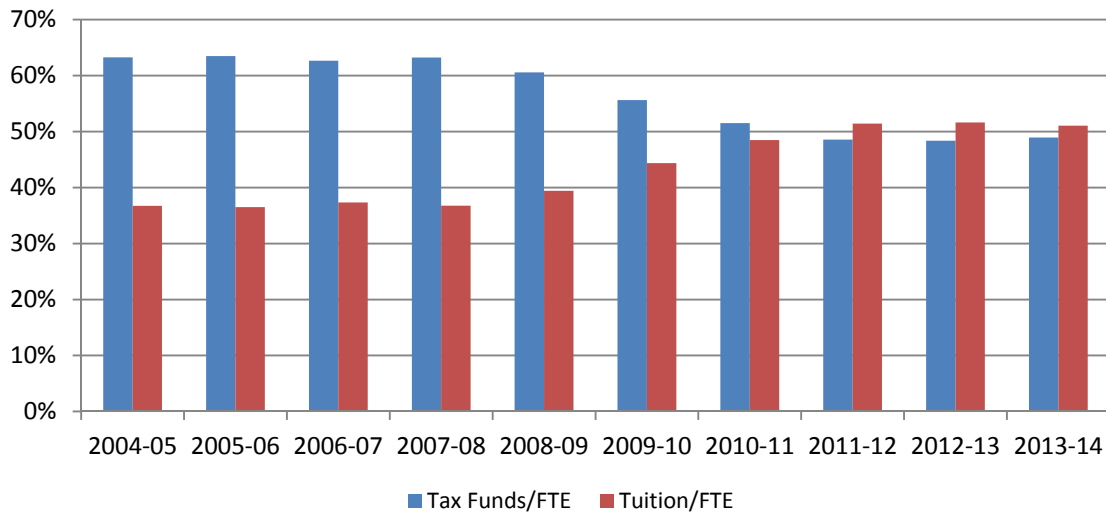
Total Resident Waivers				
	2010-11	2011-12	2012-13	2013-14
UU	\$8,659,920	\$9,881,863	10,882,418	11,663,049
USU	5,855,622	6,615,438	7,030,600	6,969,785
WSU	4,704,653	4,938,829	5,550,345	5,831,172
SUU	2,537,907	2,674,337	2,847,351	2,907,251
Snow	750,978	780,305	882,159	906,420
DSU	1,394,538	1,582,253	2,111,147	2,094,632
UVU	5,974,077	6,738,401	7,178,641	7,461,121
SLCC	2,747,378	2,398,324	2,155,601	2,305,713
Total Resident	\$32,625,073	\$35,609,750	\$38,638,262	\$40,139,142

Total Non-Resident Waivers				
	2010-11	2011-12	2012-13	2013-14
UU	\$5,207,367	\$5,390,124	\$7,556,186	\$5,341,199
USU	15,706,240	17,067,101	17,808,972	23,239,304
WSU	3,426,036	3,926,608	4,735,972	5,284,318
SUU	2,844,480	2,469,895	2,937,133	4,093,132
Snow	442,455	502,051	572,224	736,613
DSU	2,539,162	3,162,955	2,658,638	3,566,299
UVU	2,312,993	2,686,976	2,897,408	5,393,222
SLCC	786,604	1,545,064	1,130,649	2,201,084
Total Resident	\$33,265,337	\$36,750,774	\$40,297,182	\$49,855,170

Source: Table 11 of Tab F – Paying for College

Tab H – Budget History

Expenditures Per FTE Student  
By Revenue Source



Source: Table 9 of Tab H - Budget History

Tab J – Staffing

USHE EMPLOYEE FTE COUNT FOR FALL 2014  
TOTAL - UTAH SYSTEM OF HIGHER EDUCATION

	Instruction	Research	Public Service	Academic Support	Student Services	Institutional Support	O&M Plant	Auxiliaries	Hospital	Total
Regular Faculty	3,974	420	145	67	3	4	0	0	7	4,620
Adjunct / Wage Rated Faculty	2,423	547	577	47	1	0	0	0	11	3,606
Teaching Assistants	541	823	89	33	8	2	1	1	0	1,498
Executives	18	13	6	99	23	101	8	2	1	271
Staff	1,662	888	1,586	1,558	1,538	1,868	1,024	615	5,381	16,119
Wage Payroll	1,365	458	1,036	773	1,226	858	734	1,151	1,652	9,253
<b>TOTAL</b>	<b>9,982</b>	<b>3,149</b>	<b>3,438</b>	<b>2,577</b>	<b>2,799</b>	<b>2,833</b>	<b>1,768</b>	<b>1,769</b>	<b>7,052</b>	<b>35,367</b>

Source: Table 1 of Tab J - Staffing

# Fall 2014 3<sup>rd</sup> Week Enrollment by County

