

November 4, 2015

MEMORANDUM

TO: State Board of Regents

FROM: David L. Buhler

SUBJECT: Weber State University – Campus Master Plan Approval

Issue

Weber State University requests the review and approval of its updated Campus Master Plan that was last formally approved on May 17, 2013. A letter from the University along with three planning documents are attached including: the Master Plan for the Ogden Campus, the Master Plan for the Davis Campus, and a map of Weber State University sites and locations.

University officials will be present at the meeting to present this agenda item and to respond to questions from the Board.

Commissioner's Recommendation

The Commissioner recommends that the Board, after their review of the information presented, approve the updates to the Weber State University Campus Master Plan.

David L. Buhler
Commissioner of Higher Education

DLB/GLS/RPA
Attachments



WEBER STATE UNIVERSITY

October 21, 2015

Dr. David Buhler, Commissioner
Utah System of Higher Education
Board of Regents Building
60 South 400 West
Salt Lake City, UT 84101-1284

Dear Commissioner Buhler,

The WSU community looks forward to welcoming the Board of Regents to campus on November 13th. As part of the activities, WSU will present its current Campus Master Plans to the Regents' Business Committee for approval. Included here are three attachments: one showing WSU's Ogden Campus Master Plan; one showing WSU's Davis Campus Master Plan; and one showing all of the sites and locations at which WSU currently has operations.

Kevin Hansen, WSU's Associate Vice President for Facilities and Campus Planning, will present this material to the Regents' Business Committee during the November 13th meetings. Again, we look forward to your visit.

Sincerely,

Dr. Norm Tarbox
Vice President for Administrative Services



FUTURE DEVELOPMENTS ZONE

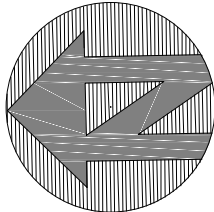
1 Mile Radius

3/4 Mile Radius

1/2 Mile Radius

1/4 Mile Radius

0' 100' 250' 500' 1000' 2000'



Car Stop

Car Stop

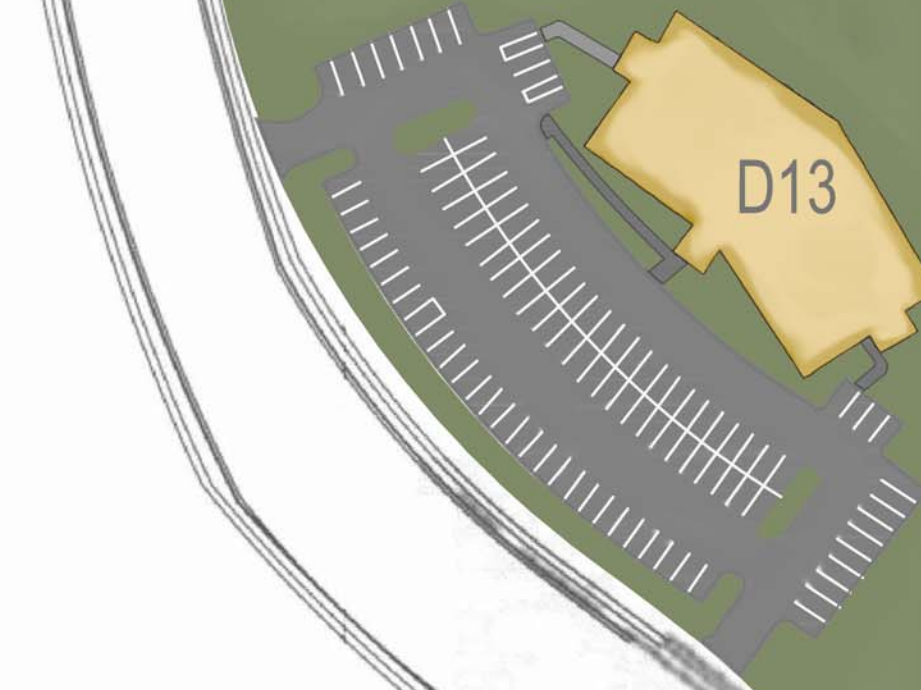
Car Stop

Proposed Street Car Path

Proposed Street Car Path

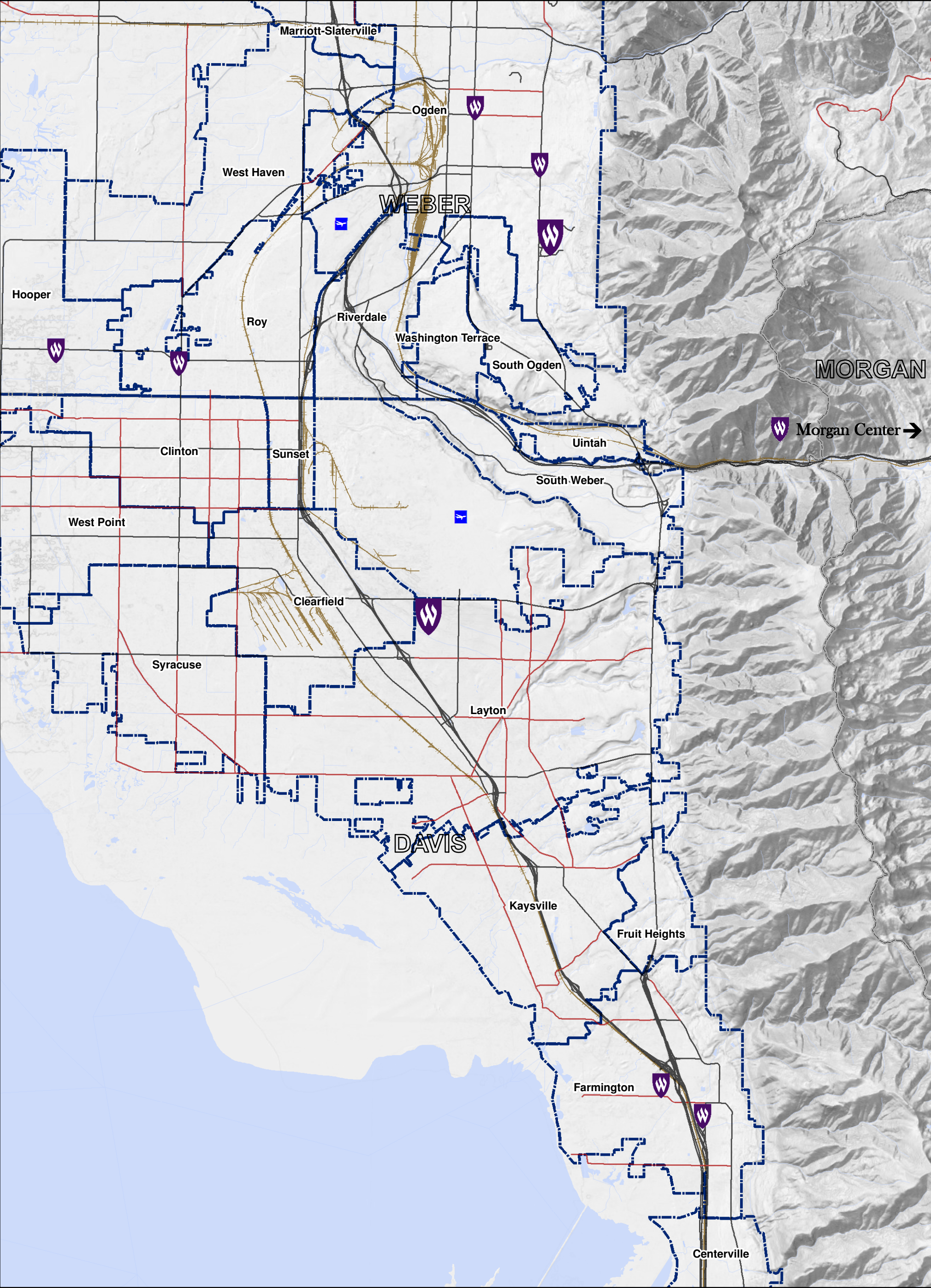
ACQUISITION ZONE

University Park Blvd.



WEBER STATE UNIVERSITY

Weber State University
Davis Campus



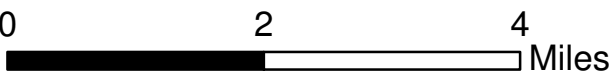
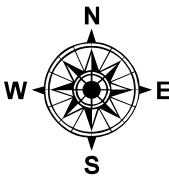
Campus and Center Locations

Legend

WSU Locations



WEBER STATE UNIVERSITY
Facilities Management



1:95,040 1 in = 2 miles