

November 4, 2015

MEMORANDUM

TO: State Board of Regents

FROM: David L. Buhler

SUBJECT: USHE – Fall 2015 Third-week Enrollment Report

USHE institutions reported an increase in total headcount of 3,453 students (2.06%) when compared to 2014 fall semester third-week enrollments. USHE also experienced an increase in total FTE of 3,271 (2.79%), and a 2,775 (2.60%) increase in budget related FTE. The improvements in USHE's enrollments in the fall of 2015 were anticipated with the expected return of the LDS missionaries that left in record numbers in 2013. Using the age of students as an indicator, spikes in enrollments of 20 year old males and 21 year old females have been observed state wide. Enrollment data by age is available through an interactive dashboard at: <http://higheredutah.org/reports/lDS-mission-impact/>

It should be noted that third-week numbers are preliminary in nature and do not include new enrollments that may occur in programs that begin after the third-week census date (e.g. 2nd block registrations and non-credit CTE enrollments). These enrollments will be included in the end-of-term reports that will be provided at the April 2016 Board of Regents meeting.

Five of the eight USHE institutions experienced growth with SUU reporting the largest percentage increase with 11.53% growth in budget related headcount and an 11.06% increase in budget related FTE. Both Weber State and Dixie State Universities reported a minor decrease in their third-week enrollment numbers which can be traced primarily to changes in the process for reporting non-credit enrollments. Of the eight USHE institutions, only Salt Lake Community College continues to experience a decline in their enrollment numbers. This is consistent with other urban community colleges nationally and may also reflect the impact of an improving economy on their student population (potential students opting for the workforce rather than college).

Total and budget-related headcounts and FTE numbers are provided in the attached tables and graphs. Also included as an attachment are USHE headcounts summarized by gender and ethnicity. Additional headcount data may be found at: <http://higheredutah.org/data/enrollments/>

Commissioner's Recommendation

This item is for information only; no action is necessary.

David L. Buhler
Commissioner of Higher Education

DLB/GLS/JAC
Attachments

Utah System of Higher Education

Fall 2015 3rd Week Headcount Enrollment Report

TOTAL HEADCOUNT (Budget Related & Self Support)	2014	2015	CHANGE	CHANGE
University of Utah	31,515	31,673	158	0.50%
Utah State University	27,662	28,622	960	3.47%
Weber State University	26,266	25,955	- 311	-1.18%
Southern Utah University	7,656	8,881	1,225	16.00%
Snow College	4,779	5,111	332	6.95%
Dixie State University	8,570	8,503	- 67	-0.78%
Utah Valley University	31,332	33,211	1,879	6.00%
Salt Lake Community College	29,537	28,814	- 723	-2.45%
USHE	167,317	170,770	3,453	2.06%

BUDGET RELATED HEADCOUNT	2014	2015	CHANGE	CHANGE
University of Utah	31,044	31,115	71	0.23%
Utah State University	25,039	26,081	1,042	4.16%
Weber State University	18,478	18,311	- 167	-0.90%
Southern Utah University	6,504	7,254	750	11.53%
Snow College	4,212	4,563	351	8.33%
Dixie State University	7,808	7,567	- 241	-3.09%
Utah Valley University	24,991	26,356	1,365	5.46%
Salt Lake Community College	24,253	23,831	- 422	-1.74%
USHE	142,329	145,078	2,749	1.93%

Utah System of Higher Education

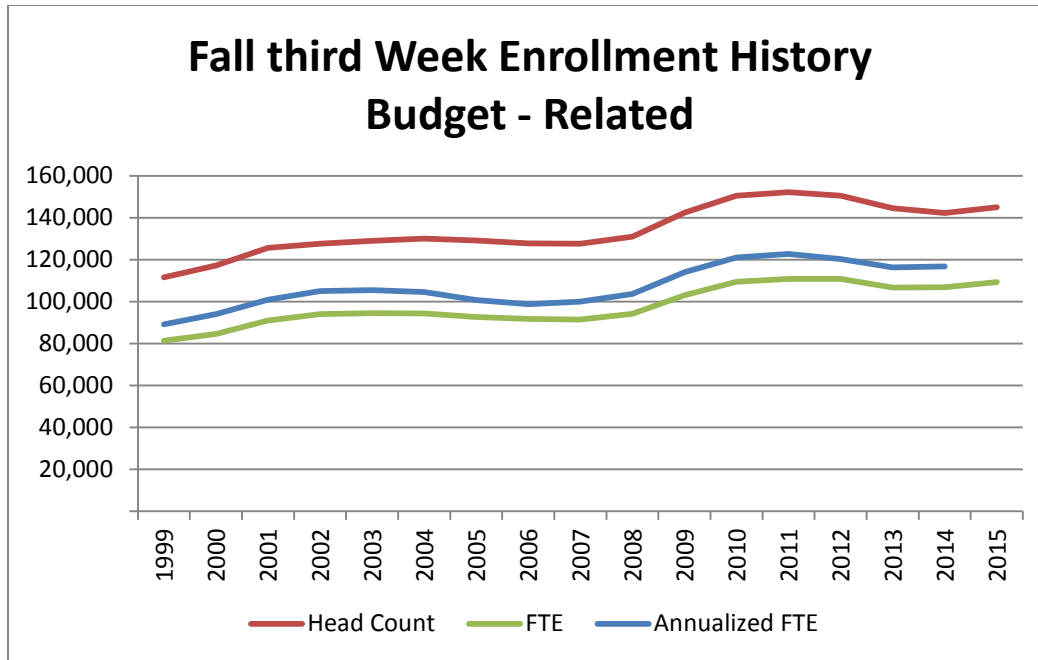
Fall 2015 3rd Week FTE Student Enrollment Report

TOTAL FTE (Budget Related & Self Support)	2014	2015	CHANGE	CHANGE
University of Utah	26,742	26,911	169	0.63%
Utah State University	20,889	22,141	1,252	5.99%
Weber State University	15,989	16,046	57	0.36%
Southern Utah University	6,150	6,929	779	12.66%
Snow College	3,746	3,909	163	4.34%
Dixie State University	6,405	6,381	- 24	-0.37%
Utah Valley University	21,335	22,591	1,256	5.89%
Salt Lake Community College	15,932	15,553	- 380	-2.38%
USHE	117,189	120,460	3,271	2.79%

BUDGET RELATED FTE	2014	2015	CHANGE	CHANGE
University of Utah	26,508	26,573	65	0.24%
Utah State University	19,456	20,512	1,056	5.43%
Weber State University	13,080	13,026	- 54	-0.41%
Southern Utah University	5,785	6,425	640	11.06%
Snow College	3,443	3,620	178	5.17%
Dixie State University	6,050	6,021	- 29	-0.47%
Utah Valley University	18,560	19,689	1,129	6.08%
Salt Lake Community College	13,934	13,724	- 210	-1.51%
USHE	106,816	109,591	2,775	2.60%

Notes:

Rounding Error - FTEs are calculated then rounded to the nearest one



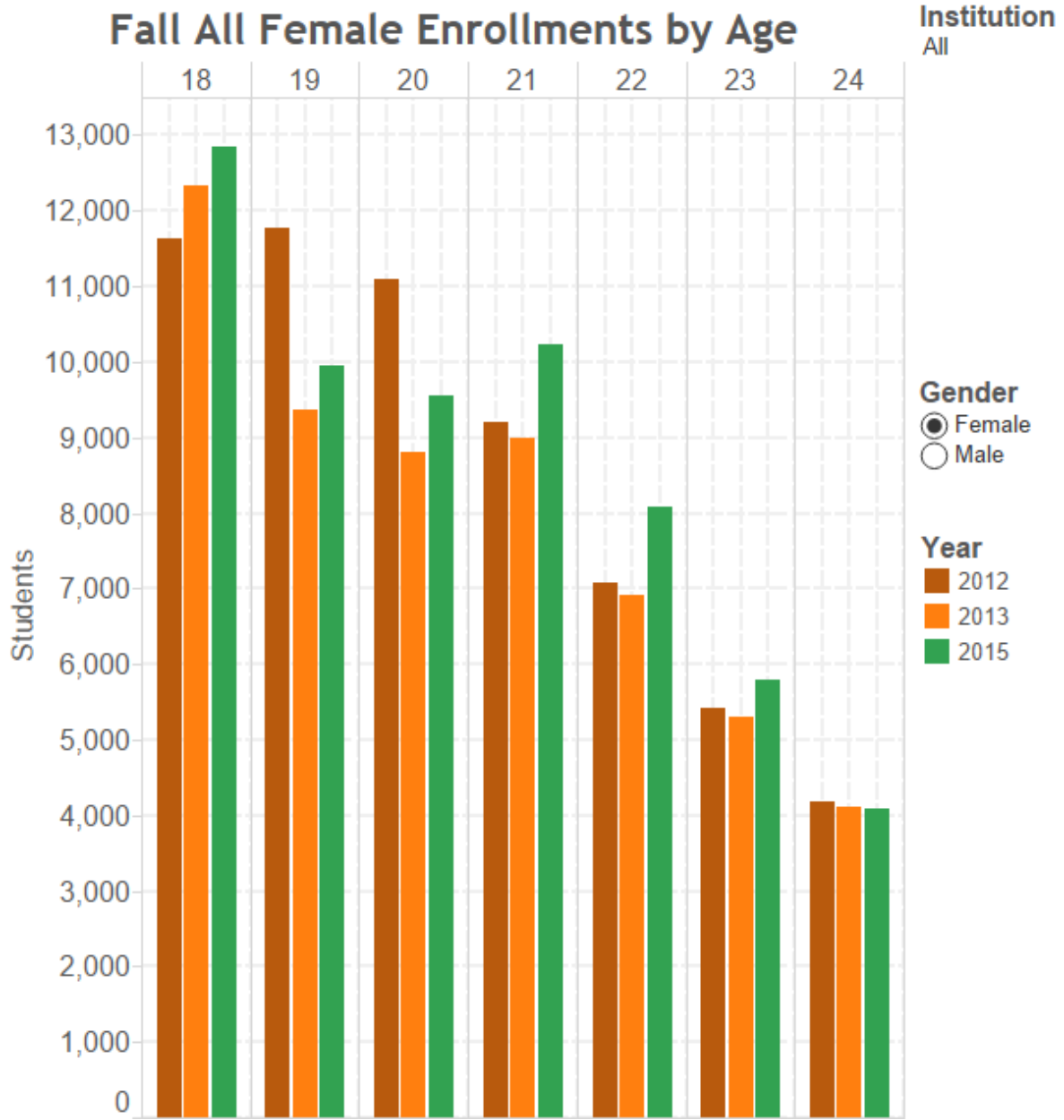
Utah System of Higher Education

Fall 2015 3rd Week Total Headcount by Gender & Ethnicity*

GENDER	2014	2015	CHANGE	CHANGE
Female	83,570	85,268	1,698	2.03%
Male	83,747	85,502	1,755	2.10%
Total	167,317	170,770	3,453	2.06%

Ethnicity	2014	2015	CHANGE	CHANGE
American Indian Alaskan	1,472	1,475	3	0.20%
Asian	3,825	3,898	73	1.91%
Black or African American	2,179	2,230	51	2.34%
Hispanic or Latino	15,493	16,699	1,206	7.78%
Native Hawaiian or Pacific Islander	1,202	1,227	25	2.08%
White	115,546	119,955	4,409	3.82%
Multiple	1,709	3,963	2,254	131.89%
Non Resident Alien	5,896	5,678	- 218	-3.70%
Unspecified	19,995	15,645	- 4,350	-21.76%
Total	167,317	170,770	3,453	2.06%

The following graphs include enrollment data from Brigham Young University. To view individual institutions, please visit: <http://higheredutah.org/reports/lds-mission-impact/>



Fall All Male Enrollments by Age

Institution
All

