

July 6, 2016

MEMORANDUM

TO: State Board of Regents

FROM: David L. Buhler

SUBJECT: Weber State University – Non-State Funded Design and Construction of Community Outreach Center in Ogden

Issue

Weber State University (WSU) requests Board approval to design and construct an 11,800 square foot Community Outreach Center on land owned by the University near downtown Ogden and authorization to present this project to the State Building Board for final approval.

Background

Regent policy R710, *Capital Facilities* requires Board approval for design and construction of non-state funded capital development projects. State statute allows the State Building Board to approve capital development projects without legislative authorization, if the project and future operation and maintenance costs are funded entirely with non-state funds.

WSU proposes to design and construct an 11,800 square foot Community Outreach Center for \$4,200,000 using donated funds and Continuing Education revenues. The ongoing operation and maintenance costs will be funded through revenue generated at the facility and through the Continuing Education program. No state funds will be used for design, construction, or operation of the center. This request was approved by the Board of Trustees at their May 3, 2016 meeting. The University requests approval of the Board to proceed with design and construction of this facility and authorization to present this project to the State Building Board for final approval.

In the March 18, 2015 meeting, the Board authorized WSU to purchase property located at 26<sup>th</sup> Street and Monroe boulevard in Ogden, Utah for the future home of a Community Outreach Center. The University has mitigated environmental concerns and demolished the two old buildings that were on the 1.4 acre property. WSU is ready to proceed with design and construction of a facility that will serve under-represented populations in Ogden and include programs such as life and employment skills training, basic education, and remedial education.

Additional information about this project and the request may be found in the attached letter, maps, and artist's rendering of the facility from the University. Representatives from the University will be available to address questions from the Board.

Commissioner's Recommendation

The Commissioner recommends that the Board approve the design and construction of the Community Outreach Center and authorize WSU to present the project to the State Building Board for final approval.

---

David L. Buhler  
Commissioner of Higher Education

DLB/KLH/RPA  
Attachment



## WEBER STATE UNIVERSITY

Administrative Services

June 23, 2016

Mr. Dave Buhler, Commissioner  
Utah System of Higher Education  
Board of Regents Building  
60 South 400 West  
Salt Lake City, UT 84101-1284

Dear Commissioner Buhler,

Weber State University seeks authorization to design and construct a new Community Outreach Center located near the center of downtown Ogden.

More than a year and a half ago, the university purchased 1.4 acres in the heart of downtown Ogden in the hopes of one day constructing a facility to reach out to an underserved community. The proposed Community Outreach Center is a one-stop center providing support for underserved populations including minority, low-income and first-generation community members to access and complete post-secondary education. This new service center for the Community Education Center, Center for Community Engaged Learning, and Children's School will strengthen the role of WSU in the community and serve as a welcoming gateway within the neighborhood. As such, it must facilitate collaboration and community building.

The Community Outreach Center will be an attractive, modern building that will develop a visually appealing and functional structure on the corner of Monroe Avenue and 26th Street, linked to community buildings by way of a developed corner plaza and building entry. Core services will include academic instruction space – including the Community Gathering Room and Computer Lab/Classroom, administrative office suites for Community Education Center and the Center for Community Engaged Learning, spaces to support community engagement – from the entry lobby, lounge space and Community Gathering Room kitchen, and the Children's Center.

Since acquiring the property, WSU has demolished the two existing structures on the site. We have also undergone a space needs and program study to determine the size, funding needed, and programmatic needs of the new facility. We anticipate the total cost of the new 11,800 sq.ft. facility to be \$4.2 million. The funding for this facility has been gathered from two sources, WSU Continuing Education revenue and donors. No state funding is being requested for this project. Operation and maintenance costs will be provided from revenue that the facility and Continuing Education collect.

Weber State would like to proceed with the design of this new facility as soon as possible in order to begin construction next year.

Please place this item on the Board of Regents agenda for the July 2016 meeting. I have attached the construction cost estimate, site location, and architectural renderings and can provide more information to any of the Board members upon request.

Sincerely,

A handwritten signature in black ink, appearing to read 'Mark Halverson'.

Mark Halverson

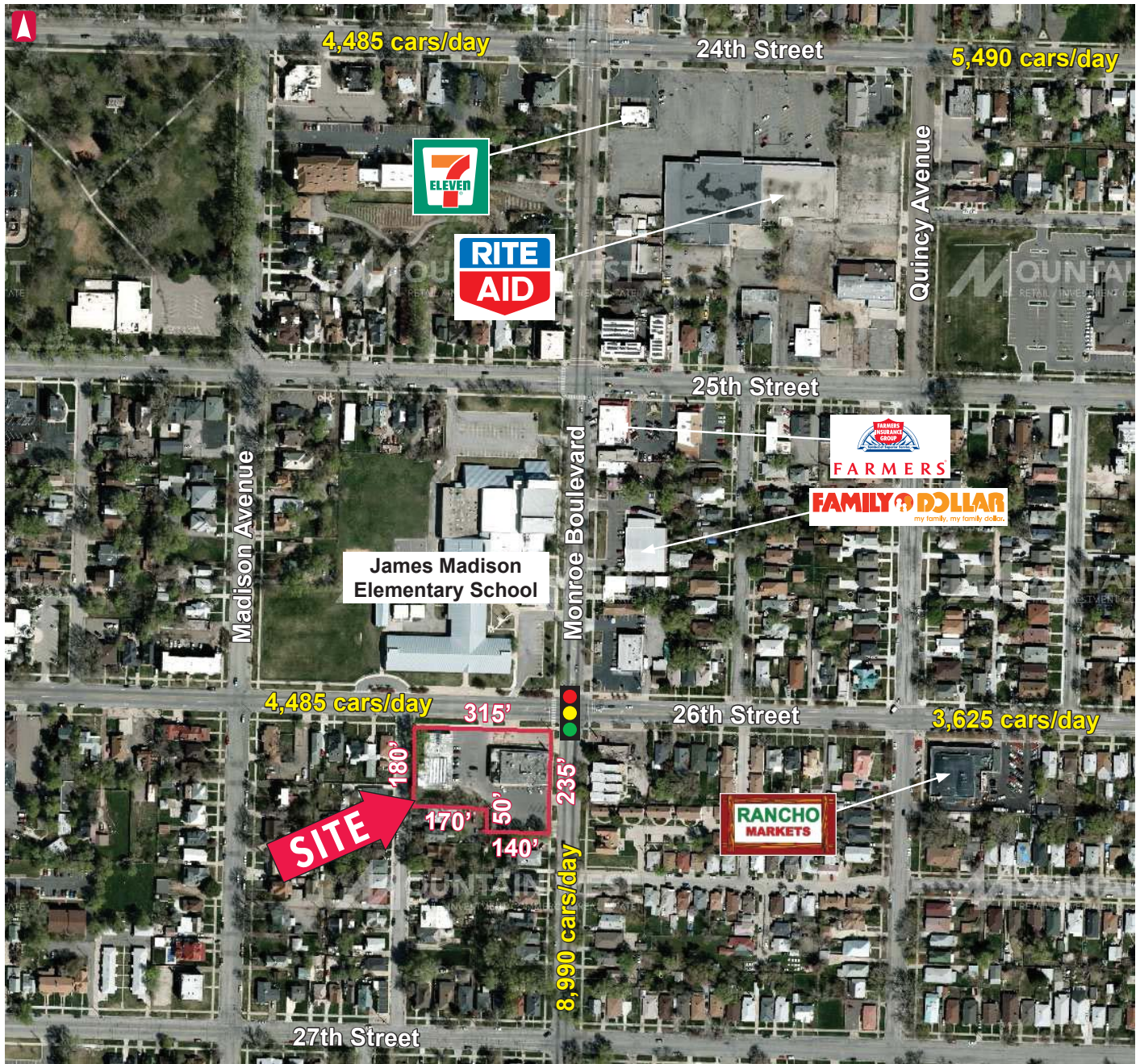
Associate Vice President

Facilities & Campus Planning

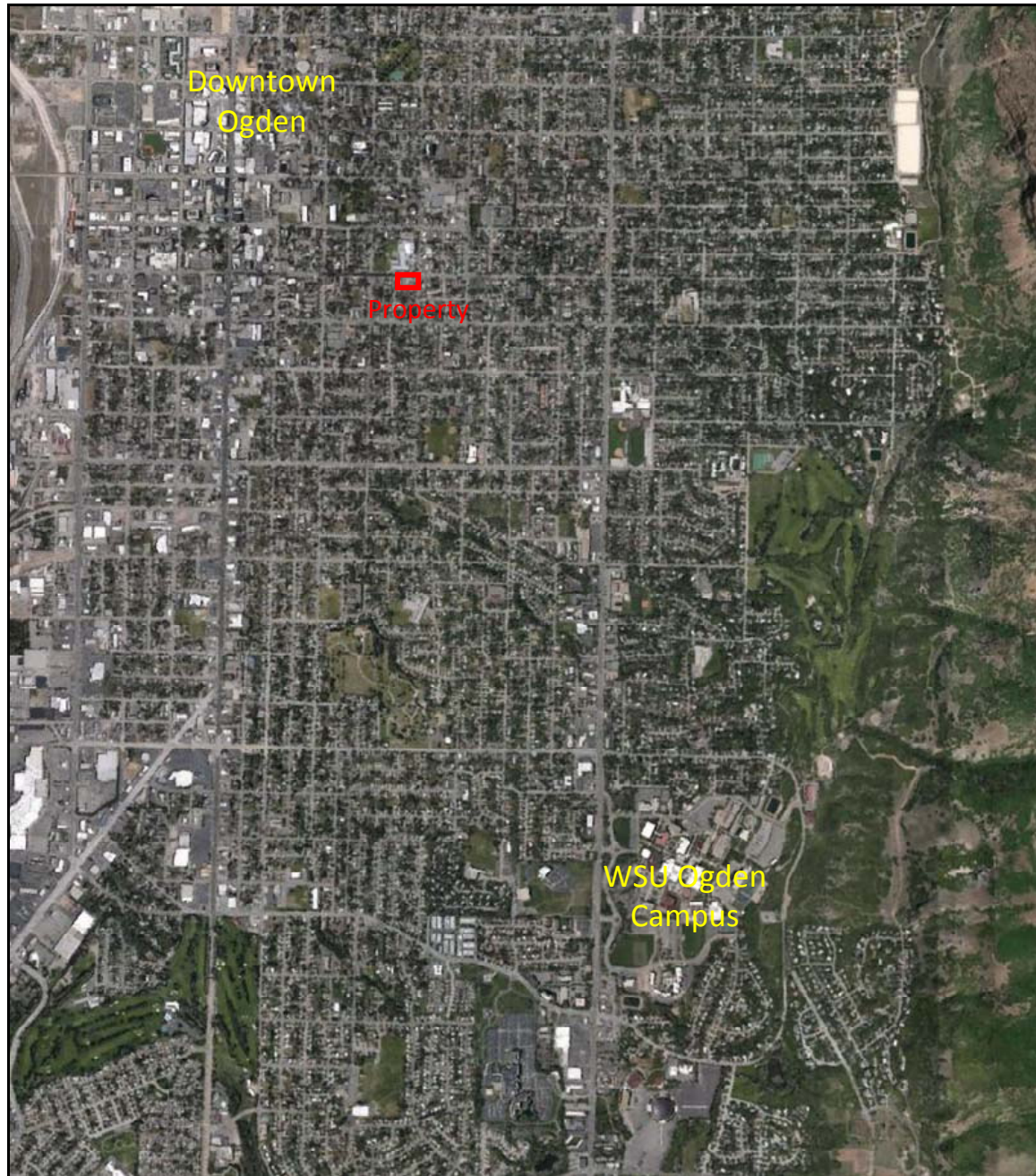


# 26TH & MONROE (SEC)

2605 SOUTH MONROE BOULEVARD • OGDEN • UTAH • 84401







*Generalized Location*



