

November 7, 2018

MEMORANDUM

TO: State Board of Regents

FROM: David L. Buhler

SUBJECT: USHE – Fall 2018 Third-week Enrollment Report

Issue

Annually, the Board receives several reports from the Commissioner's Office regarding student enrollment at each of the eight USHE colleges and universities. This report provides the first view of student enrollment for the 2018-19 academic year based on the number of students enrolled by the third-week of fall semester.

Background

USHE institutions reported an increase in total headcount of 3,915 students (2.17%) when compared to 2017 fall semester third-week enrollments. USHE also experienced an increase in total FTE of 2,590 (2.04%), and a 1,611 (1.42%) increase in budget-related Full-Time Equivalent (FTE) students. Six of the eight USHE institutions experienced growth in the number of students attending; Southern Utah University reported the greatest gains with 7.69% growth in total headcount and a 4.47% increase in budget-related FTE. Dixie State University, Snow College, and Salt Lake Community College all experienced a slight decrease in budget-related FTE's.

Females continue to enroll in greater numbers (95,369, 52%) at fall third-week when compared to males (88,580, 48%). The ethnic demographics of students remained similar to the 2017 fall snapshot with 74% of students enrolled listing their ethnicity as White and 11% Hispanic. Non-resident (foreign) students made up 3% of the USHE enrollments. The remaining ethnic categories and unspecified students make up the balance of the enrollments.

Third-week numbers are preliminary in nature and do not include new enrollments that occur after the third-week census date (e.g. 2<sup>nd</sup> block registrations and non-credit CTE enrollments). These enrollments will be included in the end-of-term reports that will be provided at the March 2019 Board of Regents meeting.

Total and budget-related headcounts and FTE numbers are provided in the attached tables and graphs. Also included in the attachment are USHE headcounts summarized by gender and ethnicity. Additional headcount data may be found at: <http://higheredutah.org/data/enrollments/>

Commissioner's Recommendation

This item is for information only; no action is necessary.

---

David L. Buhler  
Commissioner of Higher Education

DLB/KLH/JAC  
Attachments

## Utah System of Higher Education

### Fall 2018 3rd Week Headcount Enrollment Report

<b>TOTAL HEADCOUNT (Budget Related &amp; Self Support)</b>	<b>2017</b>	<b>2018</b>	<b>CHANGE</b>	<b>CHANGE</b>
University of Utah	32,800	33,023	223	0.68%
Utah State University	27,679	27,932	253	0.91%
Weber State University	27,949	28,247	298	1.07%
Southern Utah University*	9,468	10,196	728	7.69%
Snow College	5,563	5,514	- 49	-0.88%
Dixie State University	9,673	9,950	277	2.86%
Utah Valley University	37,282	39,931	2,649	7.11%
Salt Lake Community College	29,620	29,156	- 464	-1.57%
<b>USHE</b>	<b>180,034</b>	<b>183,949</b>	<b>3,915</b>	<b>2.17%</b>

<b>BUDGET RELATED HEADCOUNT</b>	<b>2017</b>	<b>2018</b>	<b>CHANGE</b>	<b>CHANGE</b>
University of Utah	31,965	32,195	230	0.72%
Utah State University	25,339	25,604	265	1.05%
Weber State University	18,808	18,666	- 142	-0.75%
Southern Utah University*	8,479	8,577	98	1.16%
Snow College	4,906	4,762	- 144	-2.94%
Dixie State University	8,242	8,105	- 137	-1.66%
Utah Valley University	28,614	29,561	947	3.31%
Salt Lake Community College	22,999	22,655	- 344	-1.50%
<b>USHE</b>	<b>149,352</b>	<b>150,125</b>	<b>773</b>	<b>0.52%</b>

## Utah System of Higher Education

### Fall 2018 3rd Week FTE Student Enrollment Report

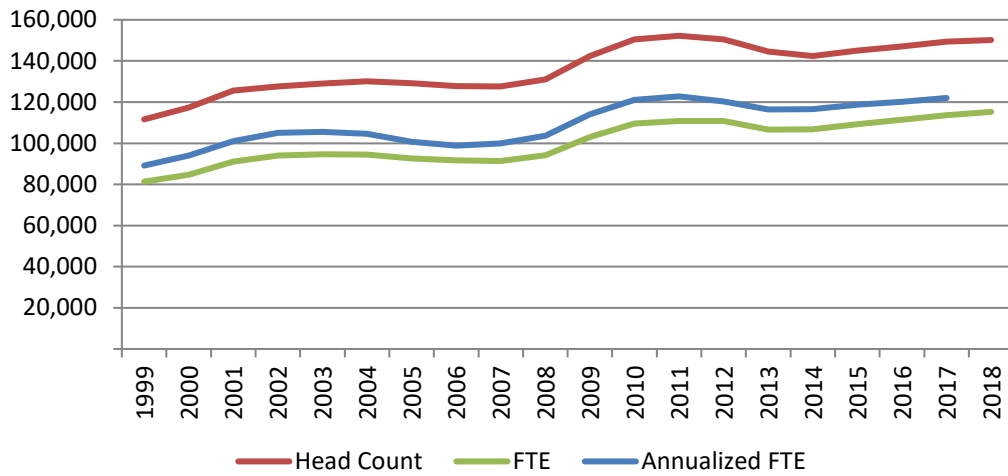
<b>TOTAL FTE (Budget Related &amp; Self Support)</b>	<b>2017</b>	<b>2018</b>	<b>CHANGE</b>	<b>CHANGE</b>
University of Utah	27,984	28,382	398	1.42%
Utah State University	22,024	22,351	328	1.49%
Weber State University	17,183	17,422	239	1.39%
Southern Utah University*	7,542	8,076	534	7.08%
Snow College	4,085	3,989	- 96	-2.35%
Dixie State University	7,382	7,522	140	1.89%
Utah Valley University	25,037	26,574	1,537	6.14%
Salt Lake Community College	15,693	15,203	- 490	-3.12%
<b>USHE</b>	<b>126,930</b>	<b>129,520</b>	<b>2,590</b>	<b>2.04%</b>

<b>BUDGET RELATED FTE</b>	<b>2017</b>	<b>2018</b>	<b>CHANGE</b>	<b>CHANGE</b>
University of Utah	27,536	27,898	362	1.31%
Utah State University	20,524	20,894	370	1.80%
Weber State University	13,179	13,282	104	0.79%
Southern Utah University*	7,284	7,609	326	4.47%
Snow College	3,744	3,615	- 129	-3.45%
Dixie State University	6,765	6,739	- 26	-0.38%
Utah Valley University	21,317	22,293	976	4.58%
Salt Lake Community College	13,308	12,937	- 371	-2.79%
<b>USHE</b>	<b>113,657</b>	<b>115,268</b>	<b>1,611</b>	<b>1.42%</b>

#### Notes:

Rounding Error - FTEs are calculated then rounded to the nearest one

## Fall third Week Enrollment History Budget - Related



### Utah System of Higher Education

*Fall 2018 3rd Week Total Headcount by Gender & Ethnicity*

GENDER	2017	2018	CHANGE	CHANGE
Female	91,841	95,369	3,528	3.84%
Male	88,193	88,580	387	0.44%
<b>Total</b>	<b>180,034</b>	<b>183,949</b>	<b>3,915</b>	<b>2.17%</b>

Ethnicity	2017	2018	CHANGE	CHANGE
American Indian Alaskan	1,506	1,418	- 88	-5.84%
Asian	4,459	4,557	98	2.20%
Black or African American	2,497	2,588	91	3.64%
Hispanic or Latino	19,887	20,841	954	4.80%
Native Hawaiian or Pacific Islander	1,384	1,328	- 56	-4.05%
White	133,878	135,430	1,552	1.16%
Multiple	5,348	5,791	443	8.28%
Non Resident Alien	5,226	5,002	- 224	-4.29%
Unspecified	5,849	6,994	1,145	19.58%
<b>Total</b>	<b>180,034</b>	<b>183,949</b>	<b>3,915</b>	<b>2.17%</b>

Total USHE Headcount Fall Semester 2018

