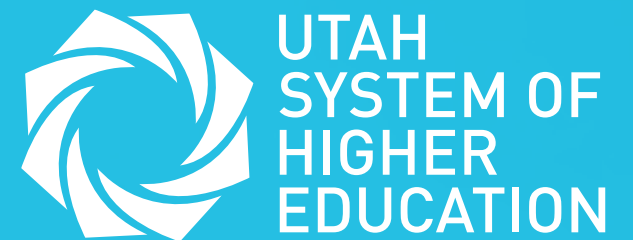


The background of the slide is a photograph of graduates in black and white caps and gowns. They are holding their caps high in the air, and the scene is brightly lit, suggesting an outdoor ceremony. A semi-transparent blue rectangle is overlaid on the right side of the image.

Academic Education Committee

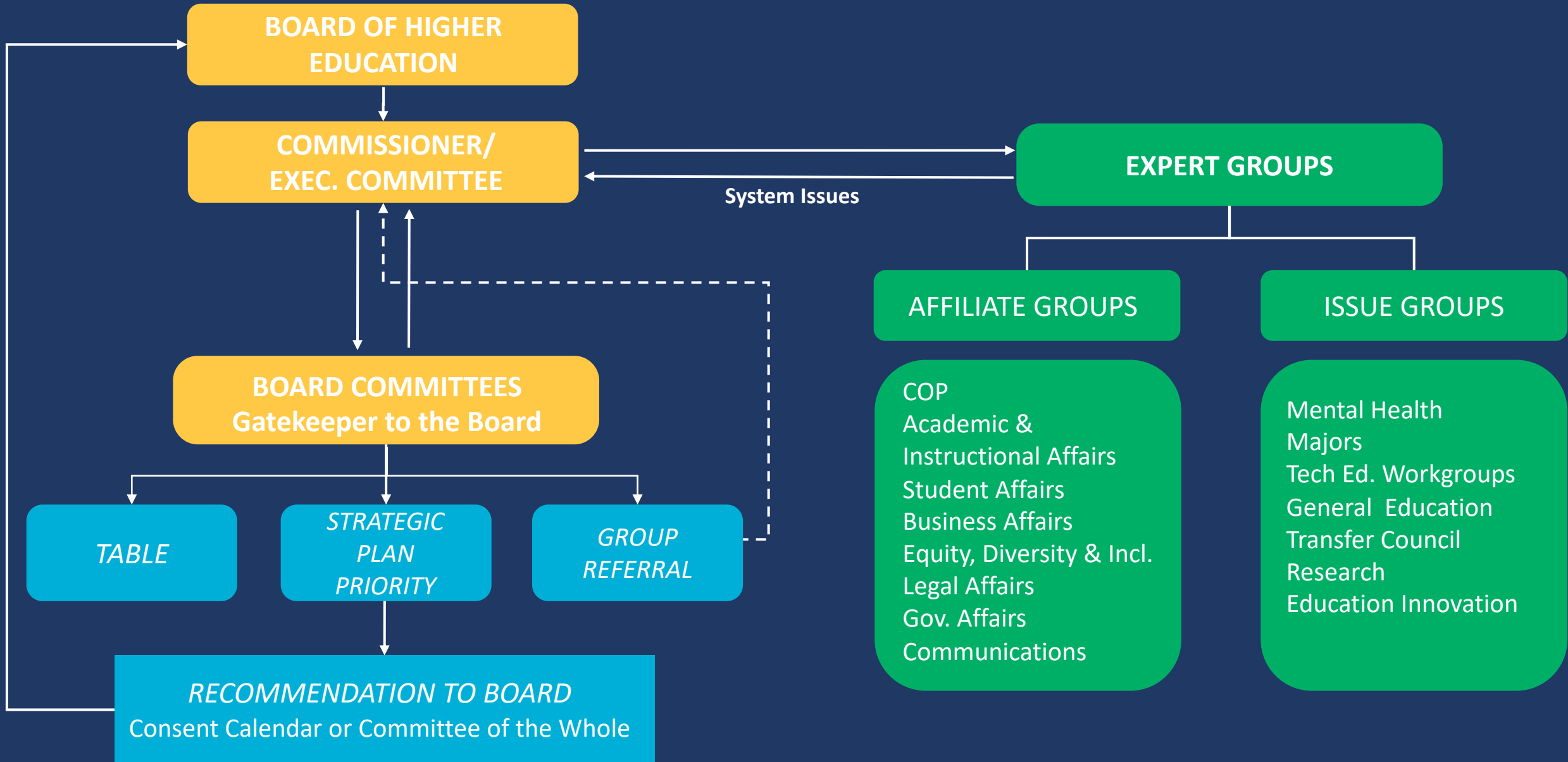
June 2021



Committee charter

- The Academic Education Committee provides ongoing oversight of the academic work of degree-granting colleges and universities, including:
 - Certificate and degree programs, their instructional quality, and their transferability and articulation
 - The production of research, scholarly work, and creative achievements
 - Faculty responsibilities

BOARD WORKFLOW



Policy R312, Degree-granting institutional roles and missions

Basic categories established in statute

Board of Higher Education defines and clarifies (most recently: August 2020)

Specific institutional roles



Three types of degree-granting institutions



Research Universities

- University of Utah
- Utah State University
 - includes regional campuses



Regional Universities

- Weber State University
- Utah Valley University
- Southern Utah University
- Dixie State University

Community Colleges

- Snow College
- Salt Lake Community College



Research universities

- Role: discover, create, and transmit knowledge; provide teaching, research, and community outreach
- Student access: selective admissions, but a responsibility to provide access to students from all parts of the state
- Research to generate and share new knowledge, discoveries, and innovations
- Serve local and global communities, promote education and research outcomes (special emphases on health and agriculture), engage in community outreach and development

UtahStateUniversity®



Regional universities

- Role: emphasize teaching, scholarly work, creative achievements, and community service
- Student access: open-access; student success is supported through developmental programs and services associated with a comprehensive community college.
- Fill regional or state workforce demands
- Community outreach: leading contributor to the quality of life and economic development at the local and state levels



Community colleges

- Role: transmitting knowledge and skills by emphasizing teaching and applied learning environments; training; scholarly, professional, and creative achievements; and community service
- Student access: provide affordable and open enrollment to community members, ensuring equitable access to higher education
- Workforce development: prepare students to enter the workforce or transfer seamlessly to stackable degree programs
- Community engagement to contribute to the quality of life and economic development of the community and the state



**Action items: update to R312,
institutional missions
statements for WSU and DSU**

Approval process for updated mission statements

1. Institutional Board of Trustees.
2. Board of Higher Education's Academic Education Committee
 - a. Determine fit with institutional role
 - b. Forward to full Board if appropriate
3. The Board decides whether to approve and amends Policy R312 to reflect the approved changes

“Role”

- *The general category within which an institution fits as described in Utah Code §53B-16-101, Establishment of Institutional Roles and General Courses of Study (R312 3.1).*

“Mission”

- *Written statements of the general purposes and functions of various institutions approved by the Board (R312 3.2).*

Regional university role definition

- Provide career and technical education, undergraduate associate and baccalaureate programs, and select master's degree programs
- Academic programs fill regional or state workforce demands
- Structure transfer programs to allow students to seamlessly seek degrees at other institutions within the System.
- Support student success through developmental programs and services associated with a comprehensive community college (dual mission role).
- Emphasize teaching, scholarly work, and creative achievements that complement teaching and community service.
- Contribute to the quality of life and economic development at the local and state levels.

Types of awards and degrees allowed

- Certificates of Proficiency (less than one year)
- Certificates of Completion (one year)
- Post-baccalaureate Certificates
- Associate Degrees
- Bachelor Degrees
- Select Master Degrees

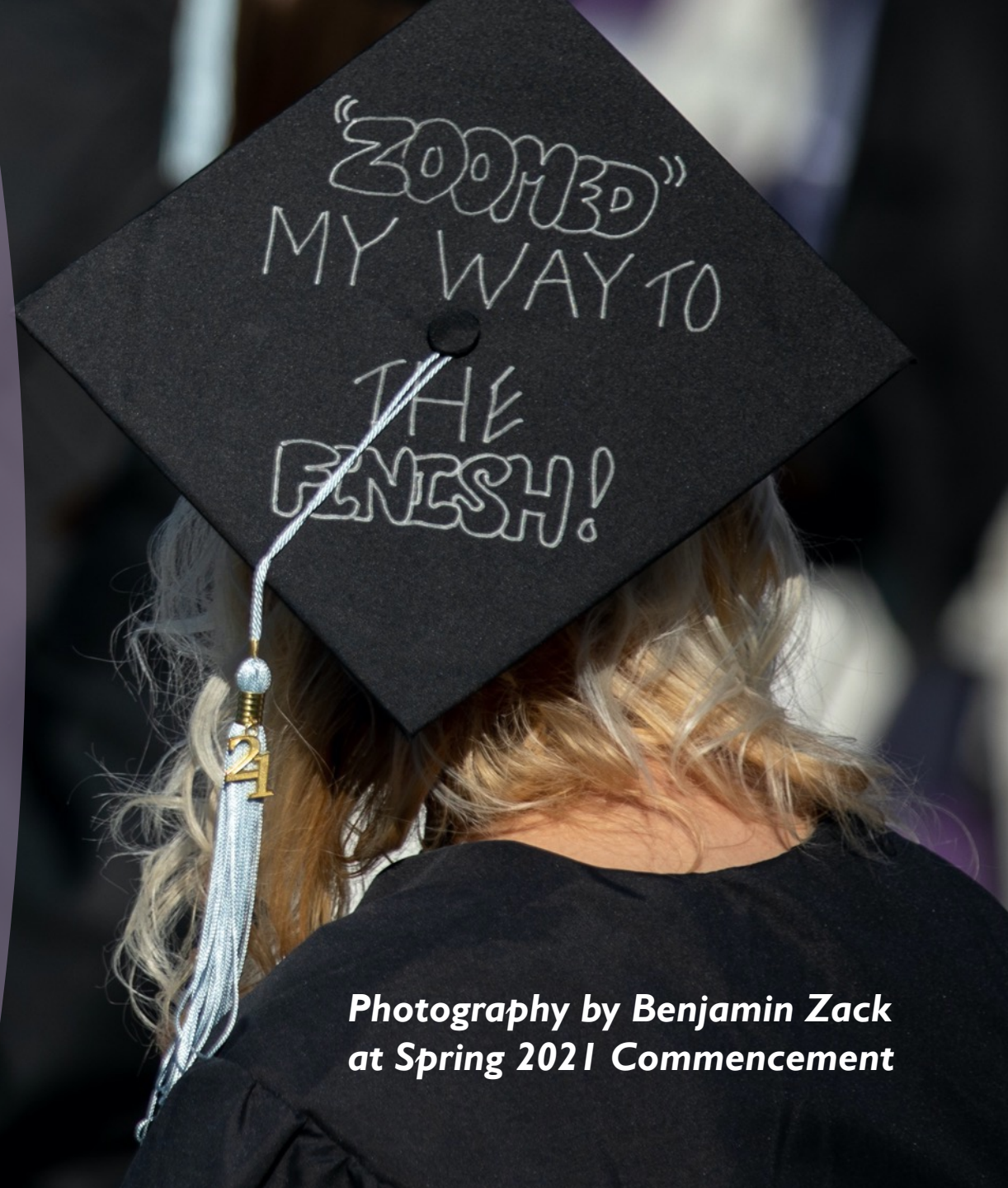
Mission Statement Update

USHE Academic Education Committee

June 18, 2021



**WEBER STATE
UNIVERSITY**



*Photography by Benjamin Zack
at Spring 2021 Commencement*



- First comprehensive strategic plan since 2010-11
- Started in February 2020
- SWOT Analysis with 790 student, faculty, staff, and community constituents
- Three open town halls
- Five strategic planning task forces
- University Planning Council oversight throughout
- Board of Trustees Approval - March 16, 2021





Overarching Tenets

- Equity Framework
- Enrollment Goals

Revised Foundations

- Core Themes
- Values
- Vision
- Mission

Five Goal Areas

- Goal Statements
- Desired Outcomes
- Strategies



Strategic Planning Outcomes (See <https://www.weber.edu/strategic-plan>)



- Equity Framework
- Enrollment by Fall 2025:
 - 32,000 Total Headcount
 - 18,700 Degree-seeking Headcount
 - Emerging Hispanic-Serving Institution (15%)



Overarching Tenets



Equity, Diversity, and Inclusion



Retention and Completion



Personal Connections and Academic Excellence



Institutionalize and Grow Anchor Mission



Marketing and Branding the University

Five Strategic Plan Goal Areas



Reaffirmed Mission Core Themes



Weber State University values:

EVERY INDIVIDUAL – Embracing all identities through the promotion of belonging, creativity, uniqueness, and self-expression;

COLLECTIVE EXCELLENCE – Fostering achievement and transparency in learning and discovery through collaboration; and

TRANSFORMATIVE EXPERIENCES – Nurturing success through engaging, supportive, and personalized opportunities in a rapidly changing world.



Values



Weber State University will be a leader in transforming lives by meeting all students where they are, challenging and guiding them to achieve their goals academically and in life.



Vision

Weber State University provides associate, baccalaureate and master degree programs in liberal arts, sciences, technical and professional fields. Encouraging freedom of expression and valuing diversity, the university provides excellent educational experiences for students through extensive personal contact among faculty, staff and students in and out of the classroom. Through academic programs, research, artistic expression, public service and community-based learning, the university serves as an educational, cultural and economic leader for the region.



Current Mission Statement (Regent approved July 2011)

Weber State University provides transformative educational experiences for students of all identities and backgrounds through meaningful personal connections with faculty and staff in and out of the classroom. The university promotes student achievement, equity and inclusion, and vibrant community relationships through multiple credentials and degree pathways, experiential learning, research, civic engagement, and stewardship.



Trustee-Approved Mission Statement



Questions?

Weber State University proposed mission statement update

Current:

Weber State University provides associate, baccalaureate and master degree programs in liberal arts, sciences, technical and professional fields. Encouraging freedom of expression and valuing diversity, the university provides excellent educational experiences for students through extensive personal contact among faculty, staff and students in and out of the classroom. Through academic programs, research, artistic expression, public service, and community-based learning, the university serves as an educational, cultural and economic leader for the region.

Proposed

Weber State University provides transformative educational experiences for students of all identities and backgrounds through meaningful personal connections with faculty and staff in and out of the classroom. The university promotes student achievement, equity and inclusion, and vibrant community relationships through multiple credentials and degree pathways, experiential learning, research, civic engagement, and stewardship.

Assessment of Fit within Regional University Role

- ✓ Provides career and technical education, undergraduate associate and baccalaureate programs, and select master's degree programs
- ✓ Academic programs fill regional or state workforce demands
- ✓ Transfer programs allow students to seamlessly seek degrees at other institutions within the system.
- ✓ Student success is supported through developmental programs and services associated with a comprehensive community college (dual mission role).
- ✓ Emphasizes teaching, scholarly work, and creative achievements that complement teaching and community service.
- ✓ Contributes to the quality of life and economic development at the local and state levels.

Motion

I move that the proposal for a change to Weber State University's mission be forwarded to the Committee of the Whole for discussion and approval to amend Board Policy R312.

DIXIE STATE UNIVERSITY MISSION PRESENTATION

DSUTM

REGENT POLICY 312: INSTITUTIONAL MISSION ROLES

4.2. Regional Universities: The regional university's role is to provide open-access academic and career and technical education, undergraduate associate and baccalaureate programs and select graduate degree programs to fill regional or state workforce demands. Career and Technical Education programs are designed to meet workforce needs, lead to a certificate or degree, and include general education coursework. Articulation agreements allow students to transfer seamlessly from institutions offering Technical Education to CTE and academic pathways. Regional universities emphasize teaching, scholarly, and creative achievements that complement pedagogy, learning, and community service. The institution is a leading contributor to the quality of life and economic development at the local and state levels. Student success is supported through developmental programs and services associated with a comprehensive community college.



A photograph of the Dixie State University building at dusk. The building is a modern, multi-story structure with large glass windows that reflect the warm colors of the sunset. To the left of the building is a tall, slender clock tower with a glowing blue light and a clock face. The sky is a mix of blue and orange, with some clouds. In the foreground, there is a green lawn and some trees.

TRAILBLAZING **DISTINCTION**

open. inclusive. comprehensive. polytechnic.
2020-2025

DSUTM
DIXIE STATE UNIVERSITY
ST. GEORGE, UTAH

MISSION

Dixie State University is an open, inclusive, comprehensive, polytechnic university featuring active and applied learning to advance students' knowledge and skills while fostering competent, resilient, lifelong learners to succeed in their careers and personal lives as creators, innovators, and responsible citizens.



ELEMENTS OF THE MISSION

OPEN
INCLUSIVE
COMPREHENSIVE
POLYTECHNIC



ELEMENTS OF THE MISSION

PRINCIPLES OF OPEN EDUCATION

- Commitment to sharing, collaborating, transparency, and community
- Open access
- Open educational resources
- Open educational practices
- Recognition of formal and non-formal learning
- Collaboration with networks and community
- Open science, scholarship, innovation, & entrepreneurship



ELEMENTS OF THE MISSION

PRINCIPLES OF INCLUSION

- Equitable access and opportunity for diverse individuals to work, learn, and succeed
- Recruitment and retention of diverse faculty, staff, & students
- Inclusive pedagogy/andragogy
- Enabling of institutional support services
- Engagement with community services and human networks



ELEMENTS OF THE MISSION

PRINCIPLES OF COMPREHENSIVE

- Unique teaching and laboratory facilities
- Breadth of undergraduate programs
- Graduate programs and professional schools
- Diverse programs, initiatives, and people
- Community engagement



ELEMENTS OF THE MISSION

PRINCIPLES OF POLYTECHNIC

- Active and applied learning
- Career focus
- Authentic learning through industry partnerships
- Integrated liberal arts and science with STEM intensive programming





**THANK YOU
GO TRAILBLAZERS!**

Dixie State University proposed mission statement update

Current:

Dixie State University is a public comprehensive university dedicated to rigorous learning and the enrichment of the professional and personal lives of its students and community by providing opportunities that engage the unique Southern Utah environment and resources.

Proposed

Dixie State University is an open, inclusive, comprehensive, polytechnic university featuring active and applied learning to advance students' knowledge and skills while fostering competent, resilient, lifelong learners to succeed in their careers and personal lives as creators, innovators, and responsible citizens.

Fit within Regional University role

- ✓ Provides career and technical education, undergraduate associate and baccalaureate programs, and select master's degree programs
- ✓ Academic programs fill regional or state workforce demands
- ✓ Transfer programs allow students to seamlessly seek degrees at other institutions within the system.
- ✓ Student success is supported through developmental programs and services associated with a comprehensive community college (dual mission role).
- ✓ Emphasizes teaching, scholarly work, and creative achievements that complement teaching and community service.
- ✓ Contributes to the quality of life and economic development at the local and state levels.

Polytechnic education

- Definition: a student-centered, comprehensive, interdisciplinary, applied learning model that integrates the liberal arts with intensive science, technology, engineering, and mathematics programs and that prepares graduates for professional careers in collaboration with regional industry partners to meet local economic needs.
- Institutions that adopt a polytechnic educational model have not altered their statutory and Board designated roles and shall maintain strategic planning, academic programs, communications and marketing that reflect those roles.

Motion

I move that the proposal for a change to Dixie State University's mission and a definition of "polytechnic education" be forwarded to the Committee of the Whole for discussion and approval to amend Board Policy R312.