

# YOUR COMMUNITY COLLEGE

Board of Higher Education

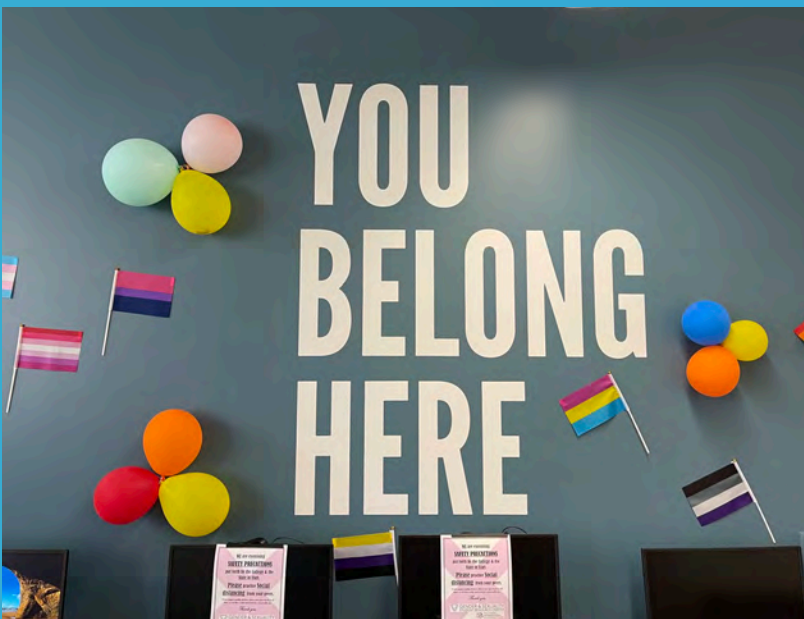
Friday, January 14, 2022



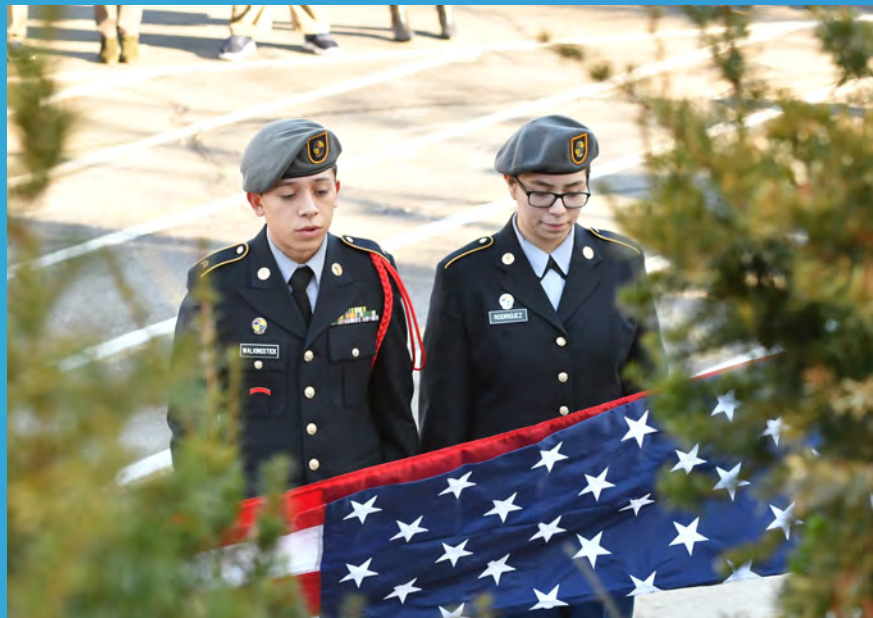
# HIGHLIGHTS







Most Affordable LGBTQ+-  
Friendly College



Rated Best for Vets



Bruin Athletics Success &  
A National  
Championship!



## JORDAN STUDENT CENTER

2021



## STUDENT HOUSING

2023

## HERRIMAN

2023



## APPLIED TECHNOLOGY BUILDING

2023



# ON THE HORIZON



# NWCCU 7-YEAR EVALUATION

## COMMENDATIONS

SLCC and Board of Trustees' systematic assessment of mission fulfillment

Student Learning Outcomes Assessment process

Eportfolio expertise and leadership

Recruitment, admissions, orientation, and advising during pandemic disruption

PAC members involvement in program development



# SYSTEM ALIGNMENT



# USHE GOALS

*with an emphasis on equity*

Access

Affordability

Completion

System Unification

Workforce Alignment

# SLCC GOALS

Equity in Student  
Participation &  
Completion

Secure Institutional  
Sustainability

Completion

Transfer Prep  
& Alignment

Align & Respond to  
Workforce Needs







Salt Lake  
Community  
College



  
**SLCC**  
**SL TECH**



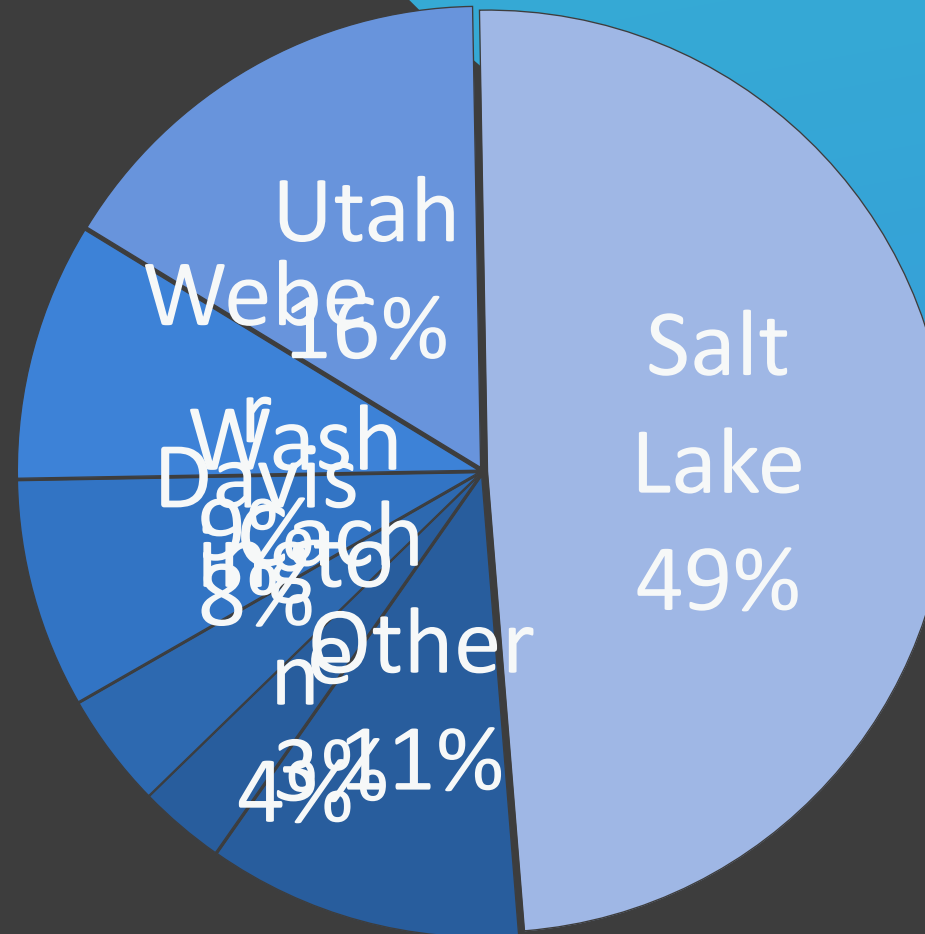




# CHALLENGES

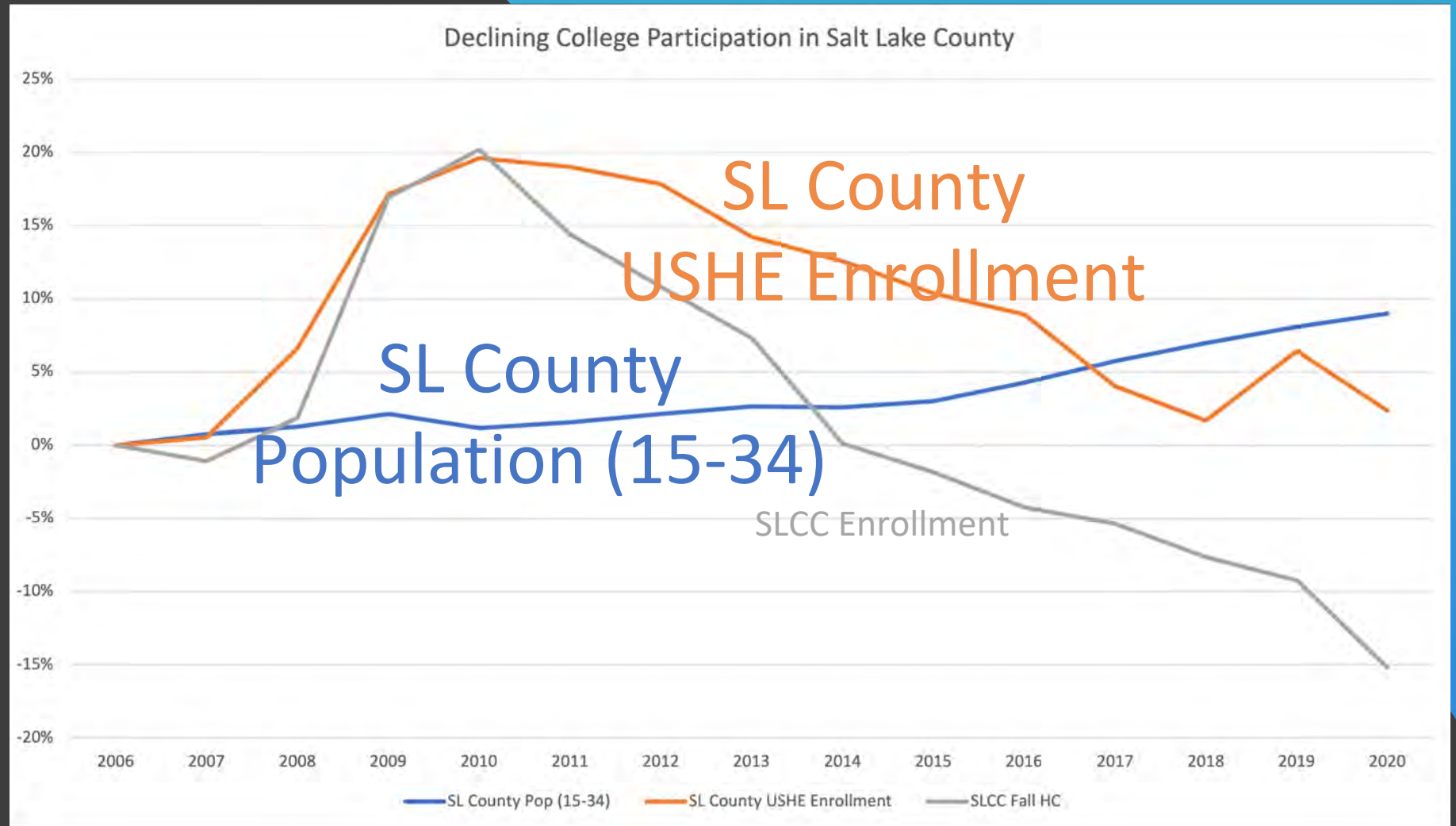
# WHERE UTAH'S PEOPLE OF COLOR LIVE

PERCENT OF MINORITY  
POPULATION BY COUNTY (2018)





# UTAH TRENDS IN COLLEGE PARTICIPATION



# NATIONAL PEER COMPARISON ENROLLMENT TRENDS 2011-2022

↓ 23.3%

Austin Community College District  
Broward College  
Central New Mexico Community College  
Central Piedmont Community College  
College of Southern Nevada  
Macomb Community College  
Pima Community College  
Portland Community College  
Sacramento City College  
Sinclair Community College

↓ 18%

Salt Lake Community College



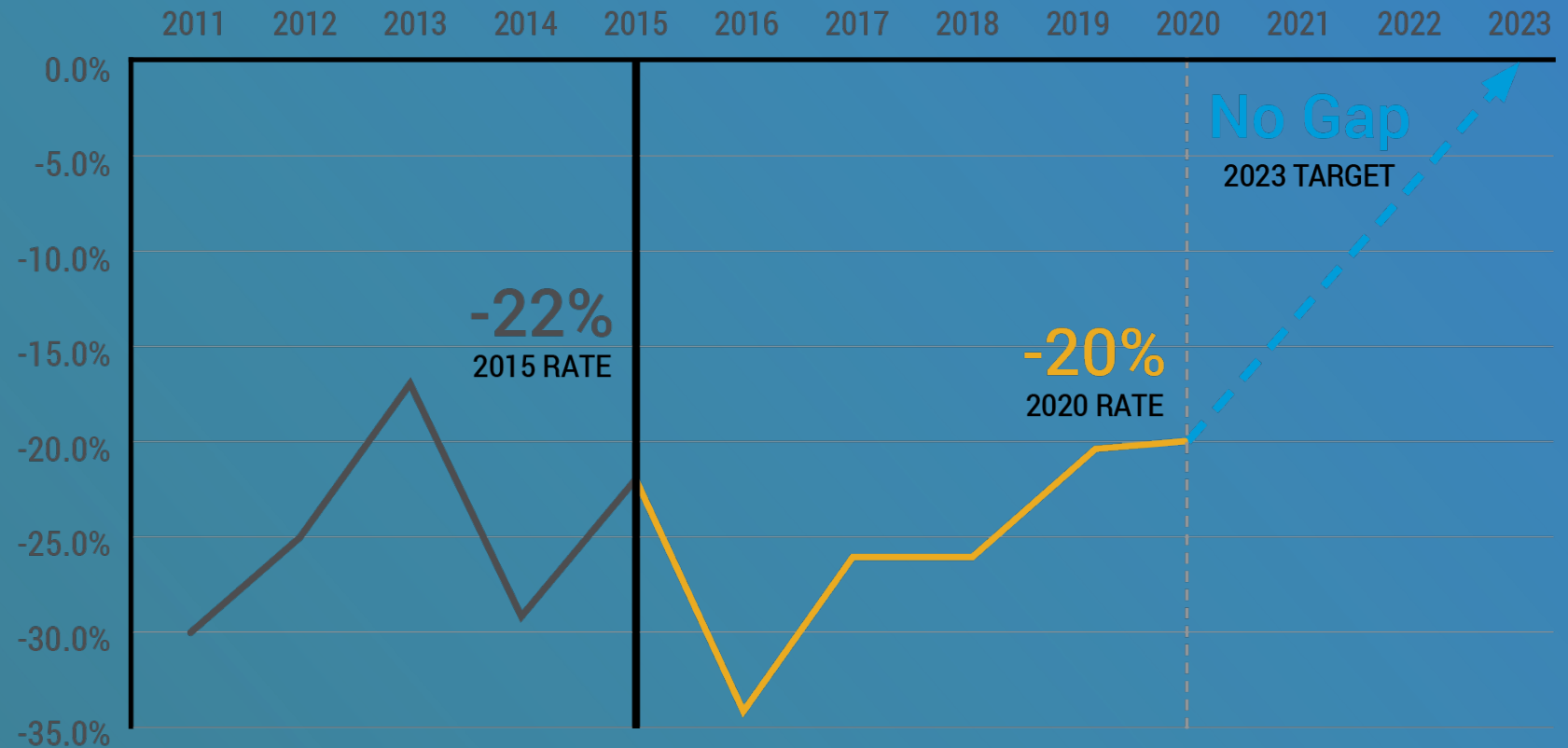




# SLCC STRATEGIC GOAL: ACHIEVE EQUITY IN STUDENT PARTICIPATION & COMPLETION



## Opportunity Gap in Completion



Middle  
School



High School



SLC



UofU

Family  
Engagement  
West Side  
CWT

PACE  
Summer  
Bridge

PACE  
TRIO  
Promise  
Pathways  
\$20M OER

Joint  
Building  
Transfer  
Partnerships

P-20 PIPELINE






# EMERGING HISPANIC SERVING INSTITUTION (HSI)

At 20% currently, SLCC will meet criteria to apply for HSI designation by 2025 (25% FT saturation)

Diverse Faculty Fellows & improved hiring practices to increase faculty & staff diversity

SLCC 360 Keynote by Dr. Gina Ann Garcia





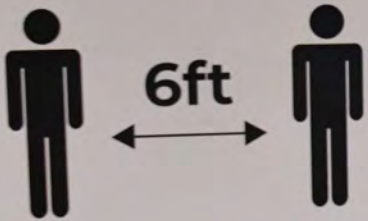
*“Awareness is like the sun.  
When it shines on things they are  
transformed.”*

Thich Nhat Hanh



# 673 DAYS

THANK YOU  
FOR PRACTICING  
SOCIAL DISTANCING



Pandemic

Enrollment Decline

Equity & Social Justice

Fatigue

Economic Crash &  
Recovery



# PRESSURES AROUND EQUITY & TRANSFORMATION

The background image shows a university campus with a large, modern building in the center, surrounded by green trees. In the distance, a range of mountains with snow-capped peaks is visible under a clear blue sky. The entire image has a semi-transparent blue overlay.

SLCC Examples



# HOW YOU CAN HELP

Be an Ambassador



The ROI of higher education

The value of an Associate's Degree

Stand up for the value of higher education and the marketplace of ideas

Support equity framework in policy and funding decisions





# Motion for Closed Session

I move we go into closed session for the purposes of discussing the character, professional competence, or physical or mental health of an individual.



UTAH  
SYSTEM OF  
HIGHER  
EDUCATION

The Board is in Closed Session.  
Committee of the Whole will begin shortly.



– Proposal –

# School of Veterinary Medicine for the State of Utah



UtahStateUniversity

*January 14, 2022*



# Why Utah Needs a School of Veterinary Medicine

Utah ranks #42 in the nation for number of veterinarians:

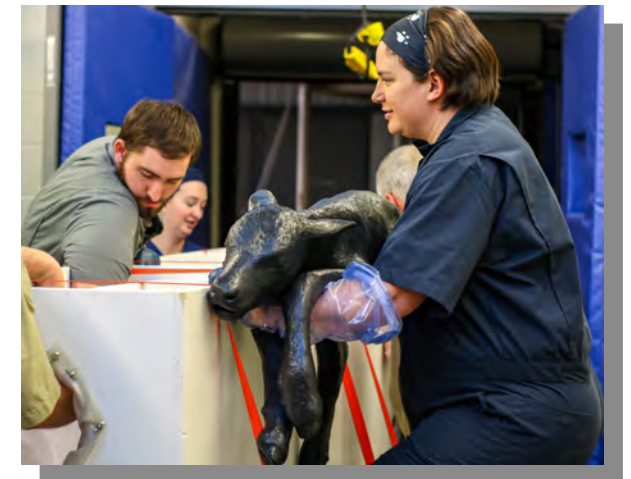
- 15% fewer Utah veterinarians per capita
- Utah clinics are struggling to keep up with current demand

The National Institutes of Health reports that:

- **61% of human pathogens originate in animals**

Utah residents interested in a doctorate of veterinary medicine (DVM) must leave the state for the completion of their degree

- **2 years at USU + 2 years at WSU = DVM for WSU**
- **\$1.7 million** of state funding goes to WSU for tuition of Utah students + an additional \$340,000 in student fees





# Benefits of a Utah School of Veterinary Medicine

- DVM-granting school at USU would:
  - Retain the **\$2 million** going to WSU for tuition and fees
  - Bring an additional **\$14.6 million tuition** to our state and local economies
- Proposed expansion will admit **80 students annually (currently 30)**:
  - At least half will be **Utah residents**
  - Selection can be balanced for **large animal and companion animal expertise**
  - Emphasis can be placed on **underrepresented students**
  - All **320 students** (80 in each cohort) will live in Utah communities during their 4-year DVM program
  - Students will provide **service to Utah clinics** through a dispersed training model
  - An additional **80 doctorate degrees** will be awarded by USU

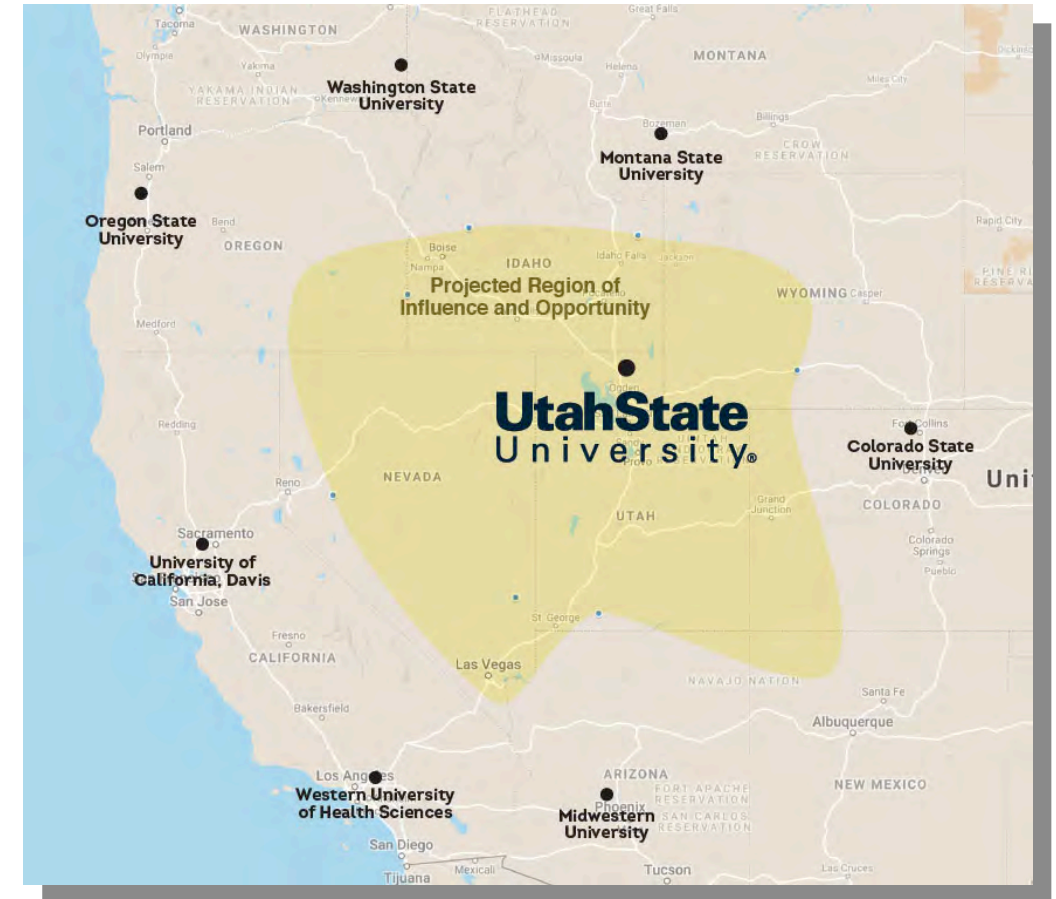
# Economic Impact of a Utah School of Veterinary Medicine

- Utah animal agriculture = more than **\$1 billion/year**
- Veterinary medicine in Utah employs **over 2,500 people** with employee compensation of over **\$94 million**
- Over 60 faculty within the School of Veterinary Medicine will enhance USU's **research capacity and technology capabilities**
- Advances USU as the **state's land-grant institution** – currently 25 have a School of Veterinary Medicine
- Utah will have the top four professional doctorate schools (***Medical, Law, Dentistry and Veterinary Medicine***)



# What Will It Cost?

- State support for 80 students/cohort and 320 students total = \$18M ongoing by FY25
- Expanded animal facilities = \$10M one-time, completed by August 2024
- New veterinary sciences and clinical building = \$70M one-time, completed by August 2025



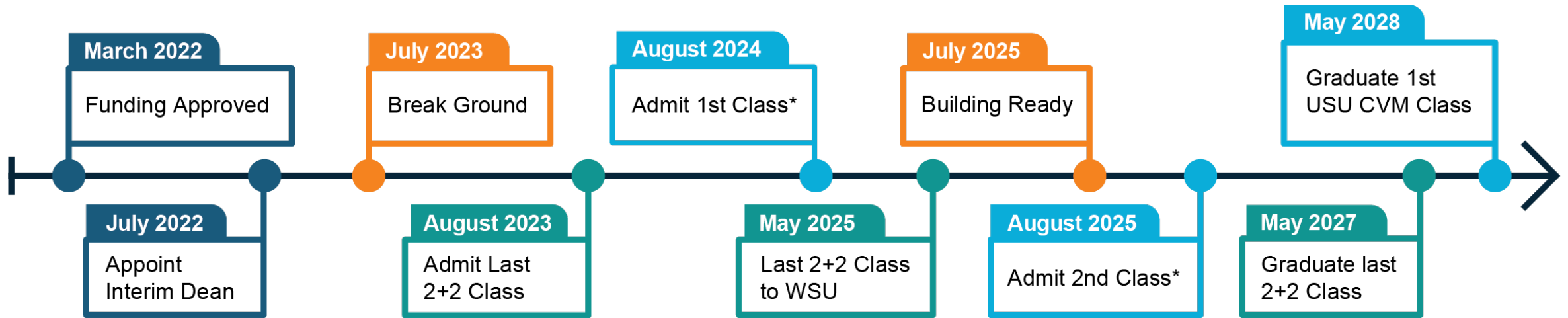
# Ongoing State Appropriations to Other Schools of Veterinary Medicine

| Funding Year | School     | Amount         |
|--------------|------------|----------------|
| FY16         | UC-Davis   | \$36M          |
| FY20         | Wisconsin  | \$19M          |
| FY20         | Colorado   | \$49M          |
| FY20         | Washington | \$29M          |
| FY20         | Kansas     | \$35M          |
| FY21         | Texas Tech | \$21M          |
| FY21         | Oregon     | \$27M          |
|              |            | Average: \$31M |





# Milestones For Proposed Timeline



\*Phased approach:

1<sup>st</sup> class of **40** students admitted in August 2024 using current USU facilities

2<sup>nd</sup> class of **80** students admitted in August 2025 using new, expanded USU facilities



# Thank You



**UtahState**  
University



# UNIVERSITY OF UTAH HEALTH

---



Michael L. Good, MD  
Chief Executive Officer, University of Utah Health  
Executive Dean, Spencer Fox Eccles School of Medicine  
A. Lorris Betz Senior Vice President, Health Sciences

# WHAT IS AN ACADEMIC HEALTH SCIENCES CENTER?

An **Academic Health Science Center** is an educational institution that includes a medical school and at least one allied health professional school, and either owns or is affiliated with a teaching hospital or healthcare system. They are intended to ensure that medical research breakthroughs lead to direct clinical benefits for patients



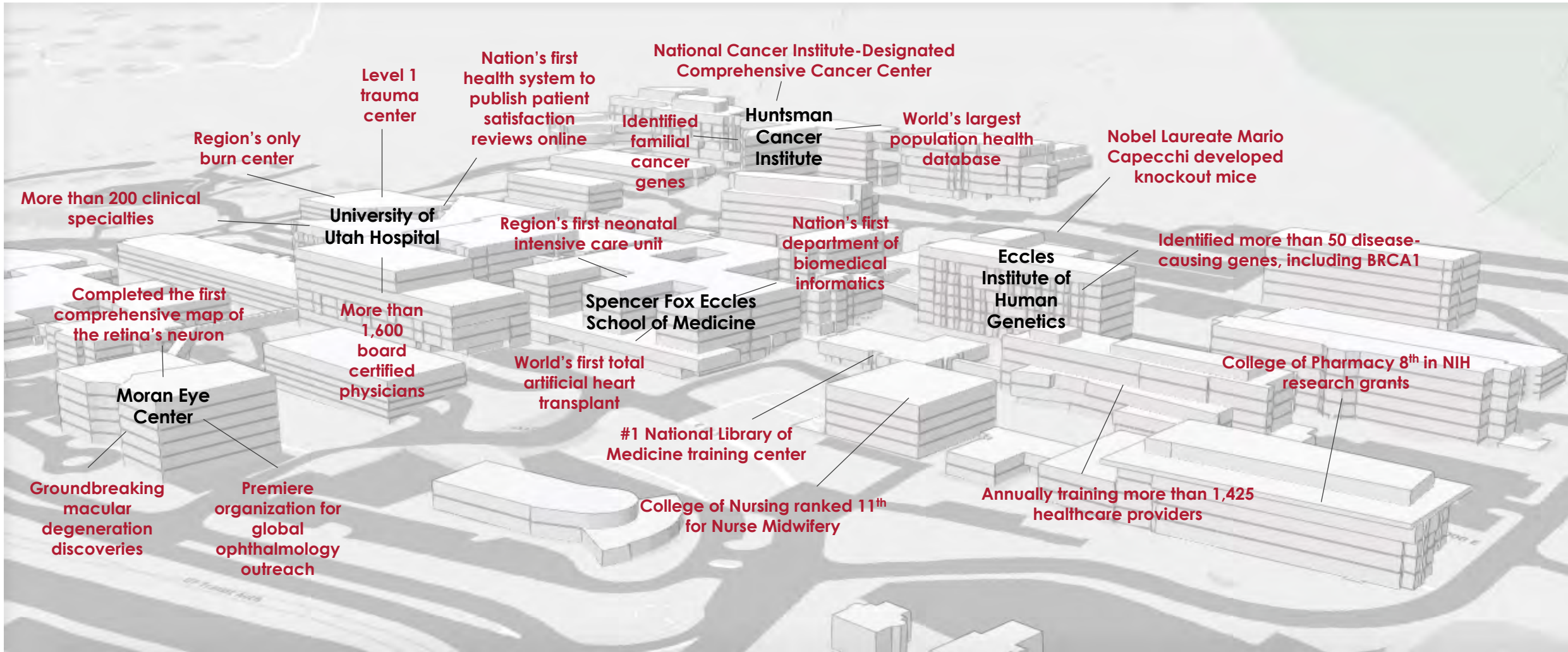
# WHAT IS OUR ACADEMIC HEALTH SCIENCES CENTER?

## EDUCATION RESEARCH CLINICAL CARE COMMUNITY ENGAGEMENT

\*University of Utah Health is one of a few dozen AHSC's (nationally) that are co-located with their university partners. This proximity leads to greater collaboration, innovation, and translation of research.



# GLOBAL INNOVATION FROM UNIVERSITY OF UTAH HEALTH







**2.0**  
**MILLION**  
PATIENT VISITS

**30%**  
**GROWTH**  
IN 5 YEARS

**\$172**  
**MILLION**  
IN  
UNCOMPENSATED  
CARE IN FY20

**\$4.3**  
**BILLION**  
EXPENSE  
BUDGET  
FY20

## ACCESS



5 HOSPITALS



12 COMMUNITY  
HEALTH CENTERS



23 REGIONAL  
PARTNERS



>10% OF THE  
CONTINENTAL US



**236,000+**  
MEMBER HEALTH PLAN

**1,600+**  
PHYSICIANS

## DISCOVERY

**\$428 Million**

GRANTS IN  
FY21

**50+**

DISEASE-CAUSING  
GENES IDENTIFIED

**13**

ALL-TIME MEMBERS OF  
NATIONAL ACADEMY OF  
SCIENCE OR MEDICINE

**1**

NCI COMPREHENSIVE  
CANCER CENTER

**1**

NOBEL LAUREATE

## EDUCATION

**1,425**

**HEALTH CARE PROVIDERS  
TRAINED IN 2020:**

- ✚ COLLEGE OF HEALTH
- ✚ COLLEGE OF NURSING
- ✚ COLLEGE OF PHARMACY
- ✚ ECCLES HEALTH SCIENCES LIBRARY
- ✚ SCHOOL OF DENTISTRY
- ✚ SCHOOL OF MEDICINE



# EDUCATION

by the numbers

We train 2/3rds of the physicians and the majority of allied health care providers who practice in Utah

**#1** **Academic medical library** in the nation for web content use

**#4** **Physician Assistant** Program in the nation

**#4** Health system in the nation for **quality and safety**

**#6** **Nursing Informatics** specialty track

**#8** **College of Pharmacy** for NIH research grants

**#11** **Nursing Midwifery** Specialty Track

**#13** **Physical Therapy** Program in the nation

**#20** **School of Medicine** for Primary Care

**#22** **Doctor of Nursing Practice**

**#30** **Nursing MS** Graduate Programs

**#30** **School of Dentistry** for NIH research grants

**#38** **School of Medicine** for Research



# INVESTMENT FOR POPULATION HEALTH EDUCATION



APR 12, 2021 | MORE ON POPULATION HEALTH

## Intermountain Healthcare enters partnership with the University of Utah on population health

Intermountain is financing a new university program that will teach practitioners to provide preemptive care.

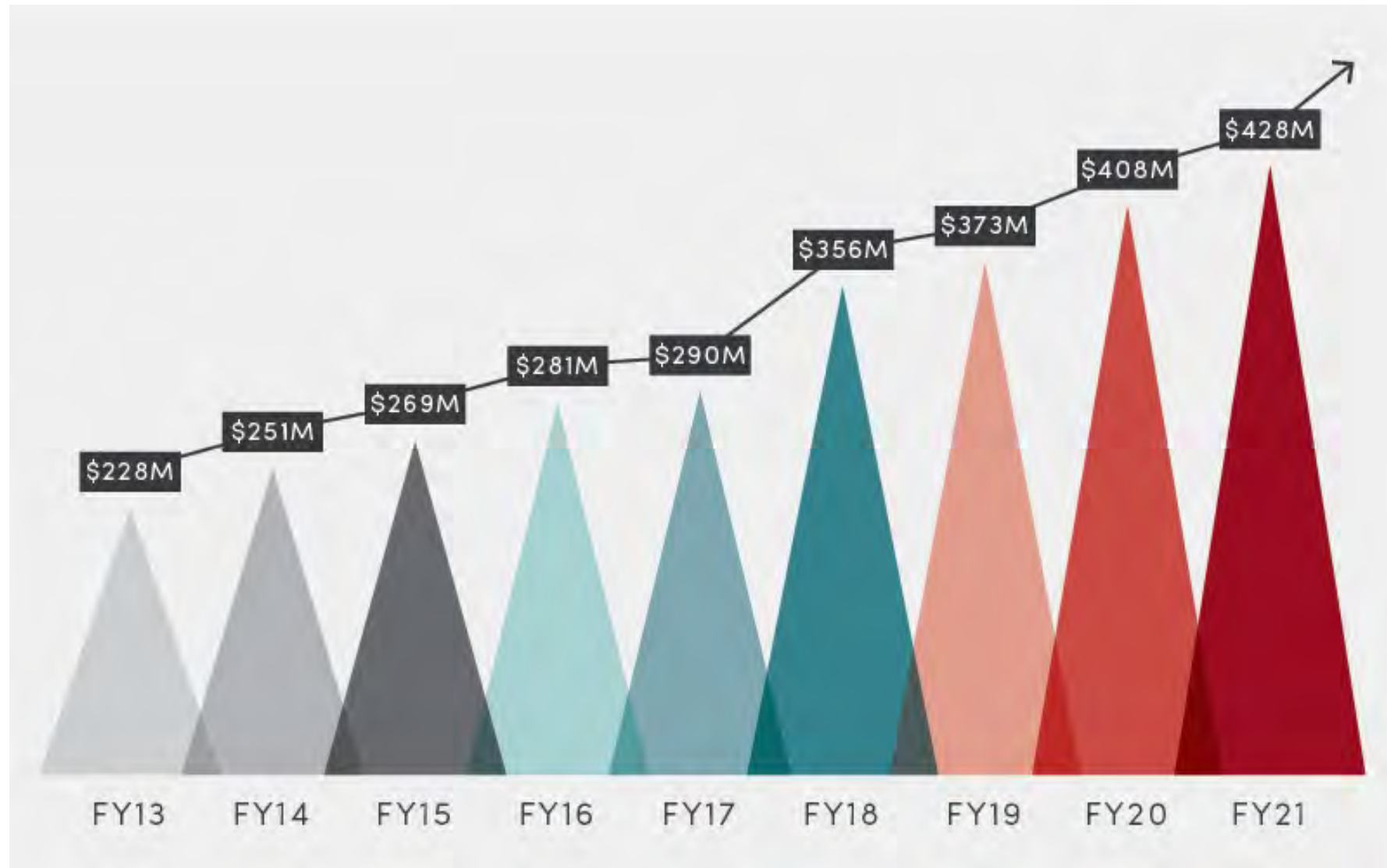


Emma Murphy



(Intermountain photo courtesy of Intermountain Healthcare)

# FROM THE NATION'S FIRST NIH GRANT TO \$428M





# FOCUSING ON DISEASES THAT IMPACT OUR COMMUNITIES

University of Utah Health Sciences Research/Partnerships

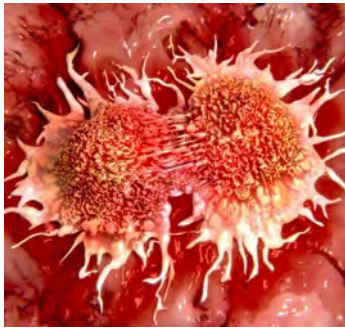
CARDIO



Cardiovascular  
Research and  
Training Institute

---  
**Nora Eccles  
Treadwell  
Foundation**

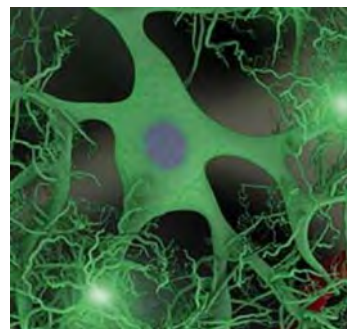
CANCER



Huntsman  
Cancer Institute

---  
**Huntsman Family  
Foundation**

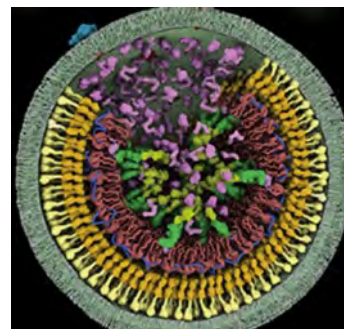
MENTAL ILLNESS



Huntsman Mental  
Health Institute

---  
**Huntsman Family  
Foundation**

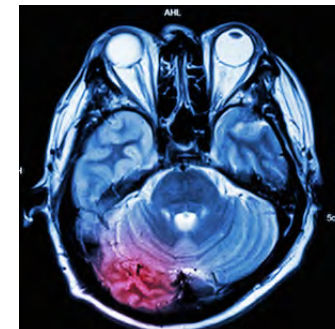
DIABETES  
OBESITY



Driving Out  
Diabetes

---  
**Larry H. Miller  
Family Wellness  
Initiative**

REHABILITATION



Craig H. Neilsen  
Rehabilitation  
Hospital

---  
**Craig H. Neilsen  
Family Foundation**

CHILDHOOD  
DISEASES

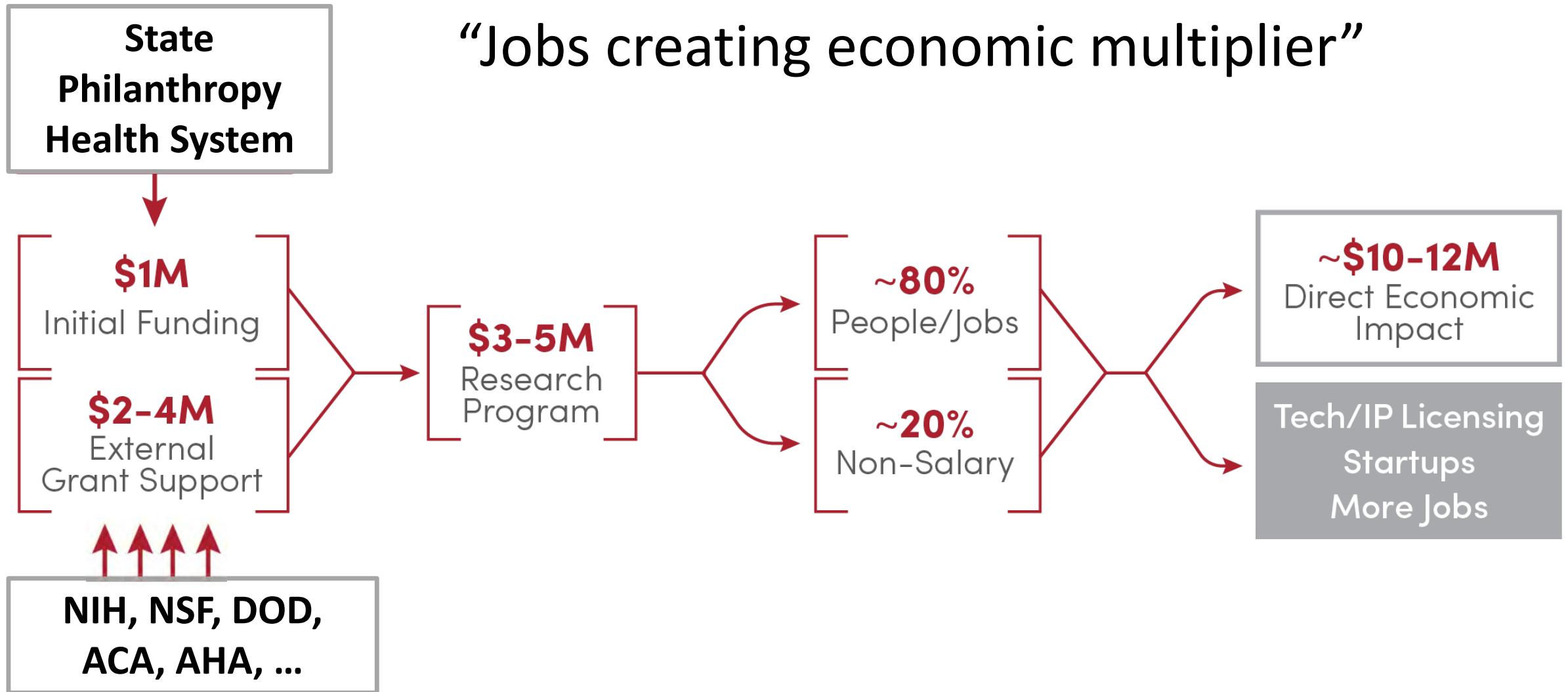


Primary Children's  
Hospital

---  
**Intermountain  
Healthcare**

# ECONOMICS OF RESEARCH

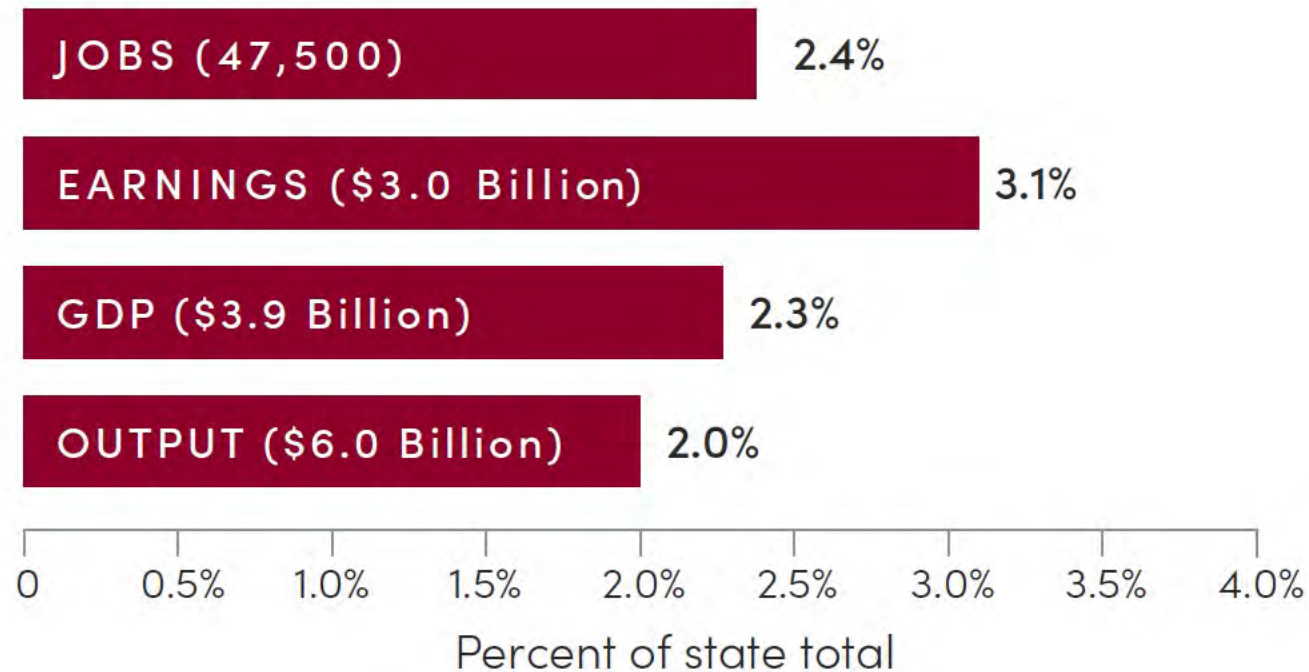
“Jobs creating economic multiplier”





# ECONOMIC IMPACT

## U of U Health Economic Contribution Summary, FY 2019 (\$ Billions)



Source: Kem C. Gardner Policy Institute analysis of  
University of Utah data using IMPLAN 2017

# PROVIDING WORLD-CLASS HEALTH CARE



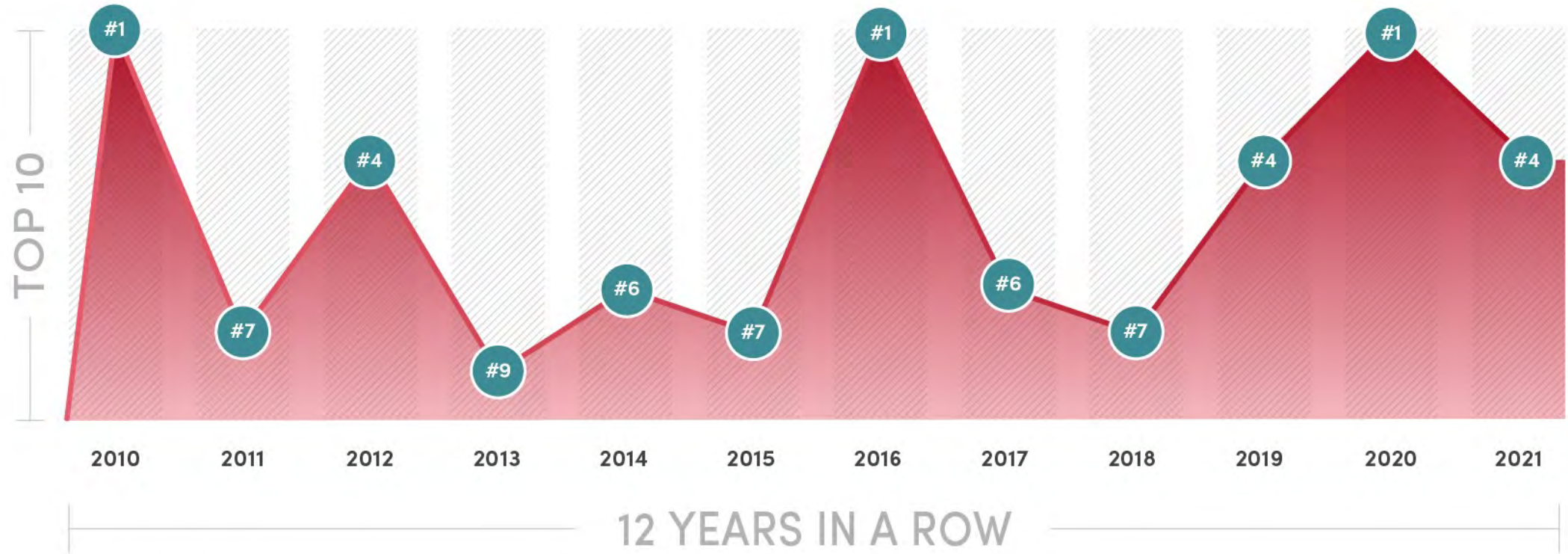
National Distinction in Quality





# TOP 10 IN THE NATION FOR QUALITY AND SAFETY – INPATIENT

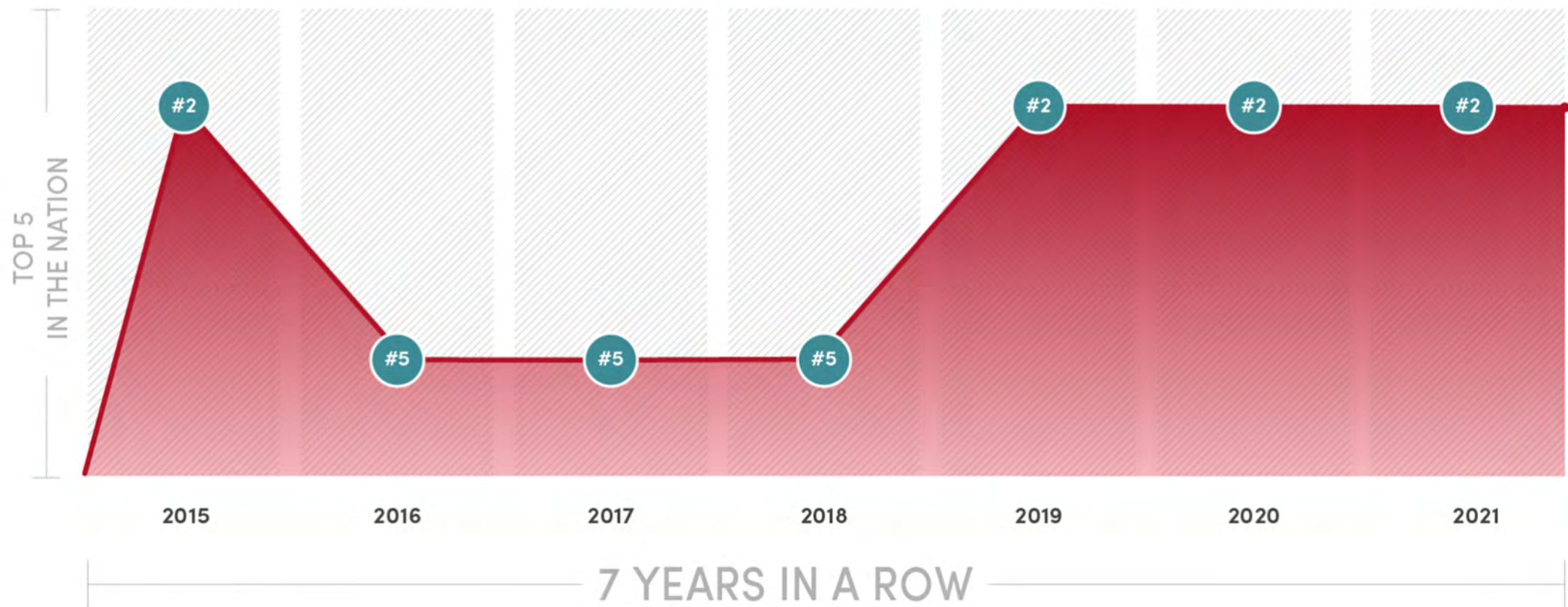
## NATIONAL QUALITY RANKING FOR UNIVERSITY OF UTAH HEALTH INPATIENT CARE



Source: Vizient, Inc.

# TOP 10 IN THE NATION FOR QUALITY AND SAFETY – OUTPATIENT

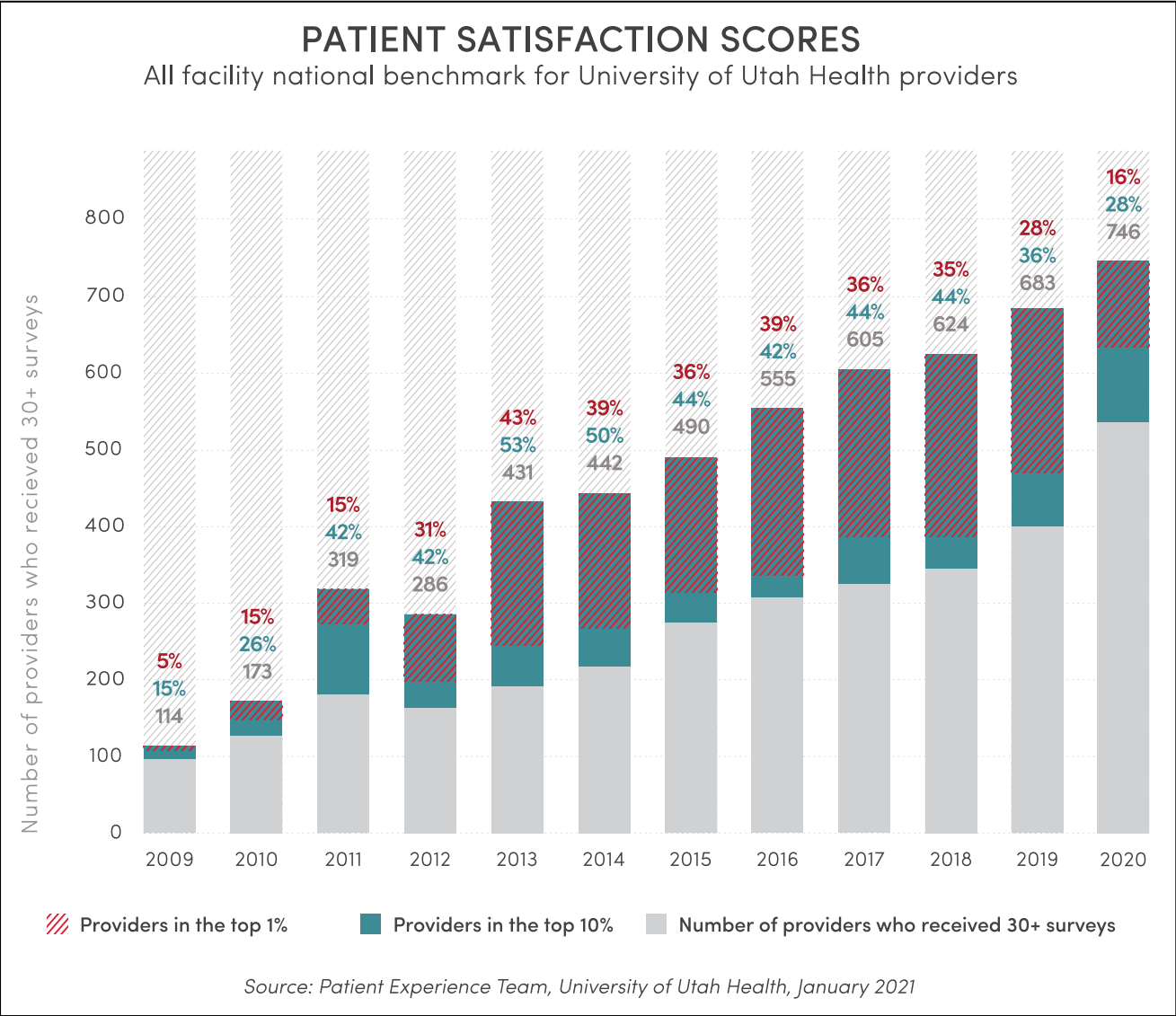
## NATIONAL QUALITY RANKING FOR UNIVERSITY OF UTAH HEALTH OUTPATIENT CARE



Source: Vizient, Inc.



# PATIENT EXPERIENCE



# TAKING WORLD-CLASS HEALTH CARE TO OUR COMMUNITIES



**University of Utah Hospital**

**Huntsman Cancer Hospital**

**Craig H. Neilsen Rehabilitation Hospital**

**University Orthopaedic Center**

**Huntsman Mental Health Institute**

**Sugarhouse Health Center**

**South Jordan Health Center**

**Farmington Health Center**

**Centerville  
Health Center**

**Madsen  
Health Center**

**Redstone  
Health Center**

**Redwood  
Health Center**

**Greenwood  
Health Center**

**Westridge  
Health Center**

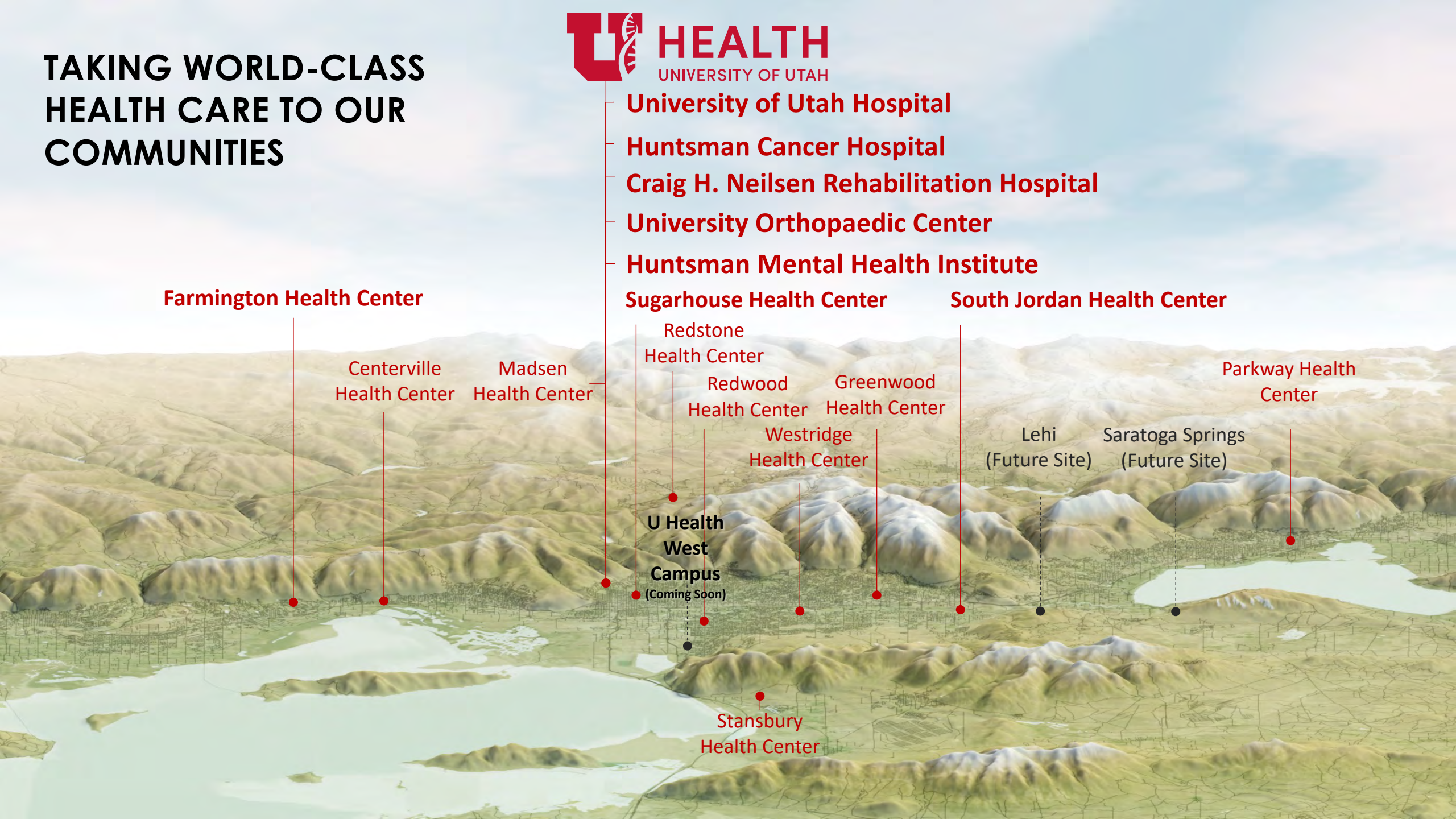
**Lehi  
(Future Site)**

**Saratoga Springs  
(Future Site)**

**Parkway Health  
Center**

**U Health  
West  
Campus  
(Coming Soon)**

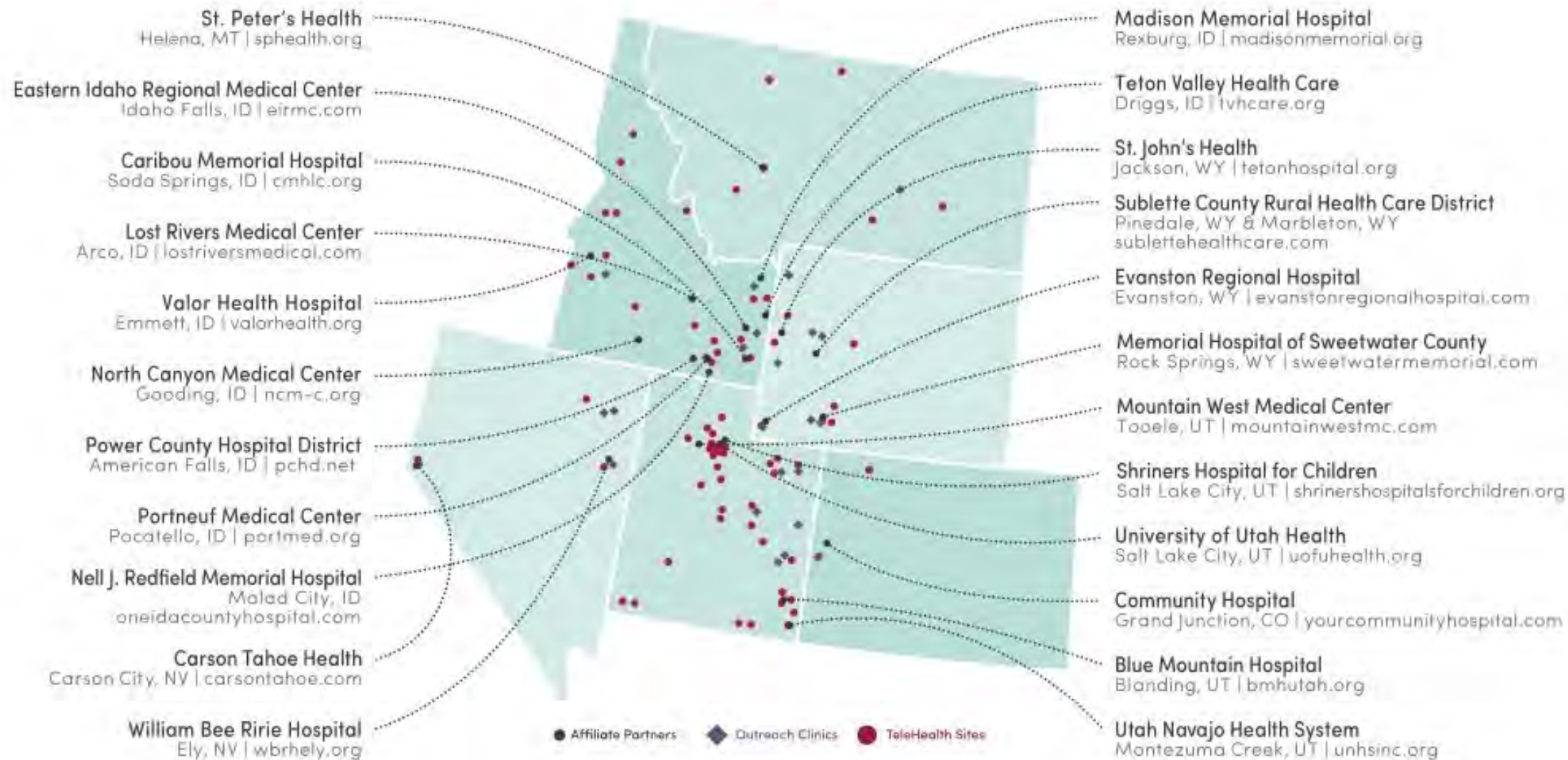
**Stansbury  
Health Center**





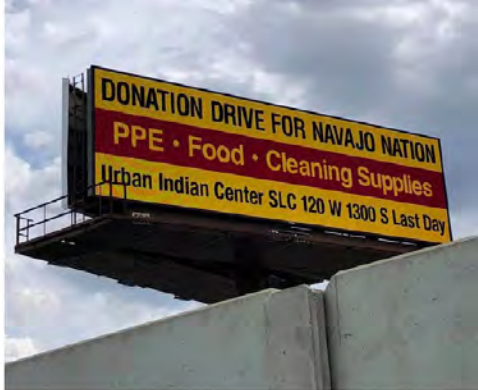
# TAKING WORLD-CLASS HEALTH CARE TO OUR REGION

## CLINICAL OUTREACH





# COMMUNITY ENGAGEMENTS



# 988



TOTAL CHATS  
Received from August 1, 2019 to May 31, 2020

## 21,854

261

CHATS FROM  
EDUCATORS

1,157

CHATS FROM  
PARENTS

20,436

CHATS FROM STUDENTS  
K-HIGHER ED

LIFE-SAVING INTERVENTIONS INITIATED  
Received from January 1, 2019 to May 31, 2020

## 583

300

FROM JAN. 2019  
TO DEC. 2019

283

FROM JAN. 2020  
TO MAY 2020



**\$12.6M in HRSA Grants Awarded in 2020 to Provide Care in Utah's Rural, Tribal, or Medically Underserved Communities**

» **\$7M grant**—School of Medicine's Value-Based Medical Student Education Training Program

» **\$4M grant**—Addiction Medicine and Addiction Psychiatry Fellowships Program

» **\$1.56M grant**—Internal Medicine-Pediatrics Rural Residency Training Program (nation's first)



# Motion

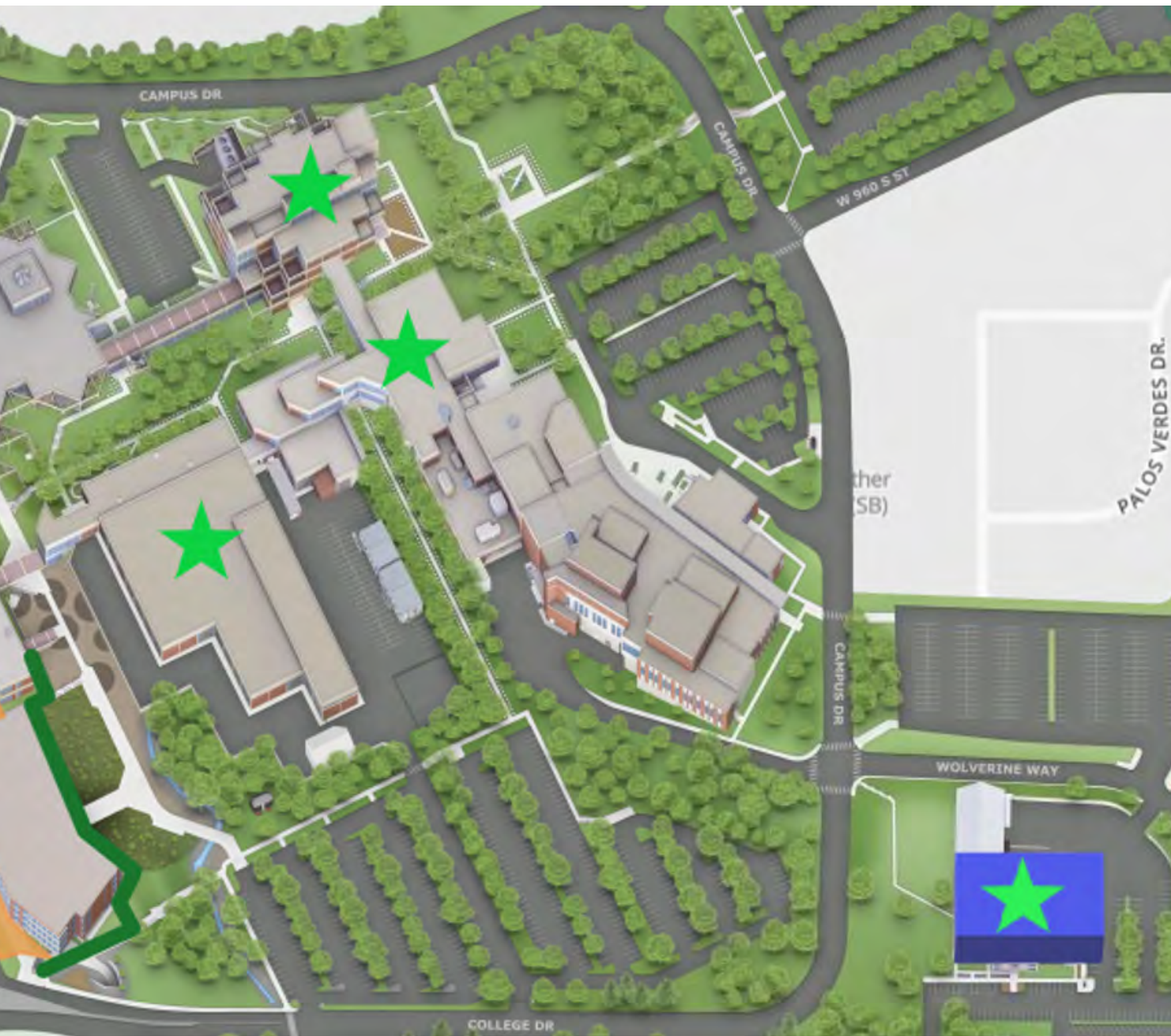
I move to adopt the revisions to R120, Board of Higher Education Bylaws and R141, Functions of the Commissioner of Higher Education.

# SCOTT M. SMITH ENGINEERING BUILDING

Site Considerations  
& Impacts







# HILL TOP

- USE THE EX BUILDING SITE

# HILL TOP SITE CONS



## Cons

- Move of current occupants
- Temporary relocation of DGM program
- New pattern for students
- Distance to CS and other buildings on campus
- Costs



# HILL TOP SITE PROS



## • Pros

- Demolition of a tired old building. DFCM supports removal of EX from our inventory. The EX is at its end of life (50 years), Built in 1972
- Preservation of greenspace inside the campus loop
- Premier location for views, Mt. Nebo to the Point
- Modernizes and establishes the UVU edge, new architecture of campus
- Anchors the Southeast corner
- Parking at building for faculty, M29 for students
- Showcases projects, windows into labs
- Accessibility, space for growth Building 2

# HILL TOP SITE PROS



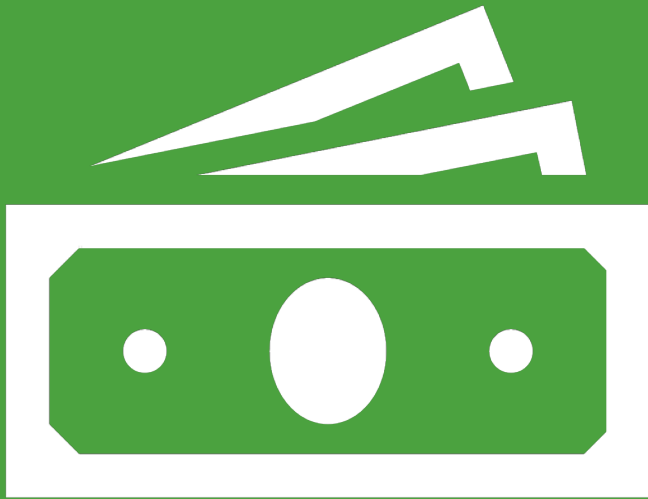
## • Pros

- Less disruption from construction
- Poly Tech and Engineering spaces
- Food in new building including restaurant
- Proximity to Noorda
- New connections to campus
- Premiere building site remaining on campus, Building will be visible from I-15 exit.



# Scott M. Smith Engineering Building





Costs



# Summary of Costs

|                                |                               |
|--------------------------------|-------------------------------|
| Hill Top for Smith Engineering | Total: \$12,253,884           |
| Demo                           | \$807,604                     |
| HVAC                           | \$7,000,000                   |
| DGM Space                      | \$2,391,280 (4000 x \$597.82) |
| Tunnel System                  | \$900,000                     |
| Basement level for tunnel      | \$1,155,000                   |
|                                |                               |
|                                |                               |
|                                |                               |

# Motion

I move to approve the project revisions for the Utah Valley University Engineering Building.





# Welcome

**Professional MBA and MBA Online Tuition Increase Request  
University of Utah David Eccles School of Business**

Professional MBA and MBA Online are  
requesting a 4% increase in tuition to  
\$62,000, starting Spring 2022



# Why Make the Change?

- Education is rapidly changing with COVID and the great resignation
- Meet the demand of more flexibility with increased virtual and remote classes.
- PMBA moving to hybrid model.
- Additional career services, resources, and support.
- New technology for remote and virtual learning.
- Increase salaries for faculty, instructional designers, and staff.

- Professional MBA ranks #28 in US News and World Report
- Top 30 ranked programs have an average of approximately \$98,000 tuition; which is 55% higher.
- Of the top 33 ranked institutions, only 5 programs have lower tuition.

# Tuition Comparison



Thank you!



# Motion

I move to approve the 4% tuition increase for the Professional and Online MBA programs at the David Eccles School of Business, to go into effect immediately for the Spring 2022 semester.





# Southern Utah University

## The Cottages at Shakespeare Lane

Board of Higher Education  
January 13, 2022



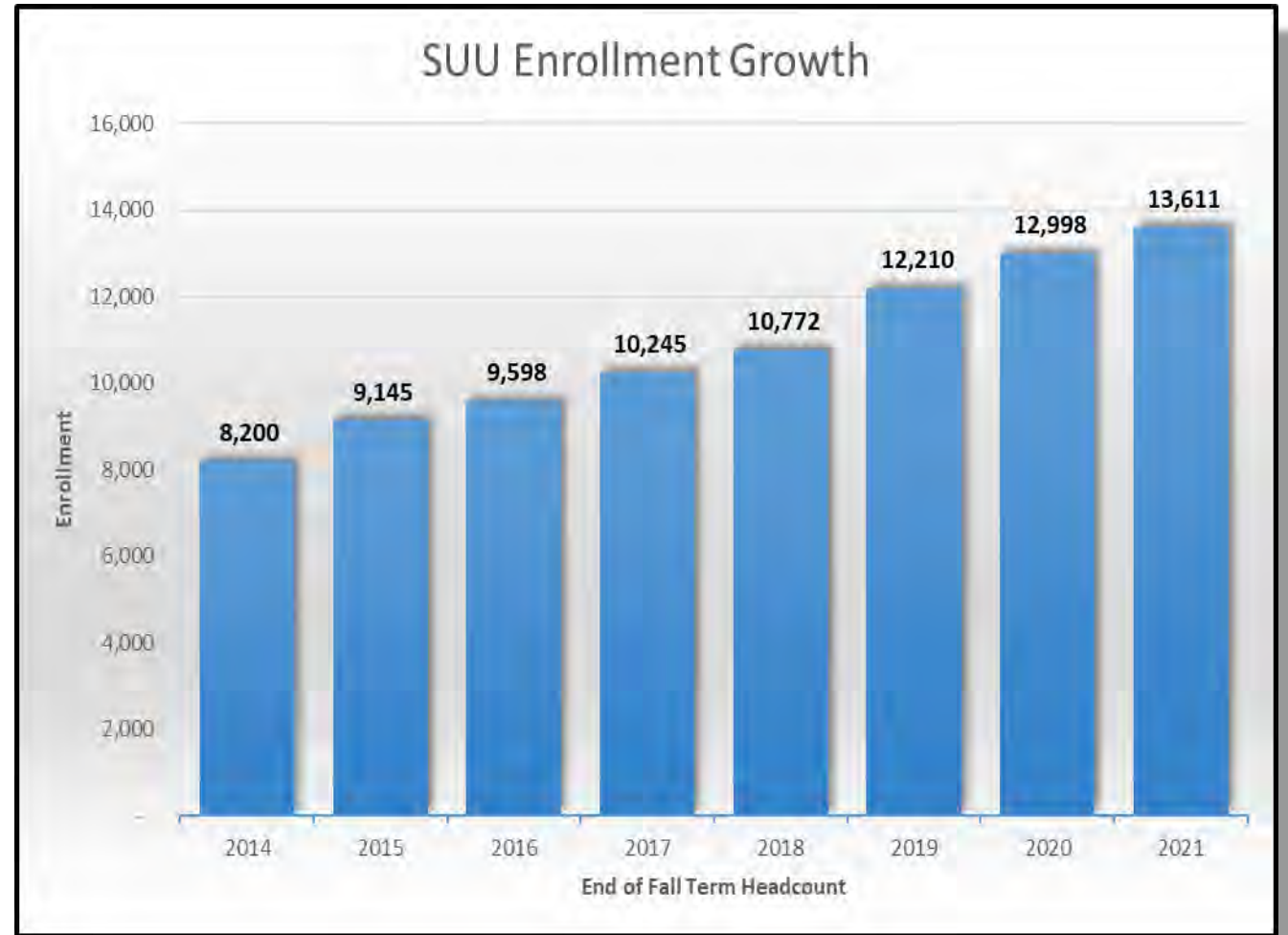
# Student Housing Shortage

- Only 900 On-campus housing beds – 13,600 students
- COVID 19 – Campus closure spring and summer 2020
- Rental vacancy through summer and only 1/3 students returned fall 2020
- Many rental homes sold to incoming residents as private residence
- August 2021 flooding – loss of additional student housing
- Over 1,000 new housing units/homes built in Cedar last year

Limited Housing

# Enrollment Growth Solutions

- 66% growth since 2014
- Added housing challenge
- Invitation from the Leavitt Family for SUU to Purchase the Cottages
  - Change in Corporate strategy
  - SUU best suitor



Enrollment Growth

# The Cottages

## Solutions

- Built 2018 - Leavitt Land & Investment
- Designed primarily as Air B&B Property
- 53 Furnished Efficiency Units
- 2 Buildings - 41,600 sqft
- Underground parking



Additional Housing



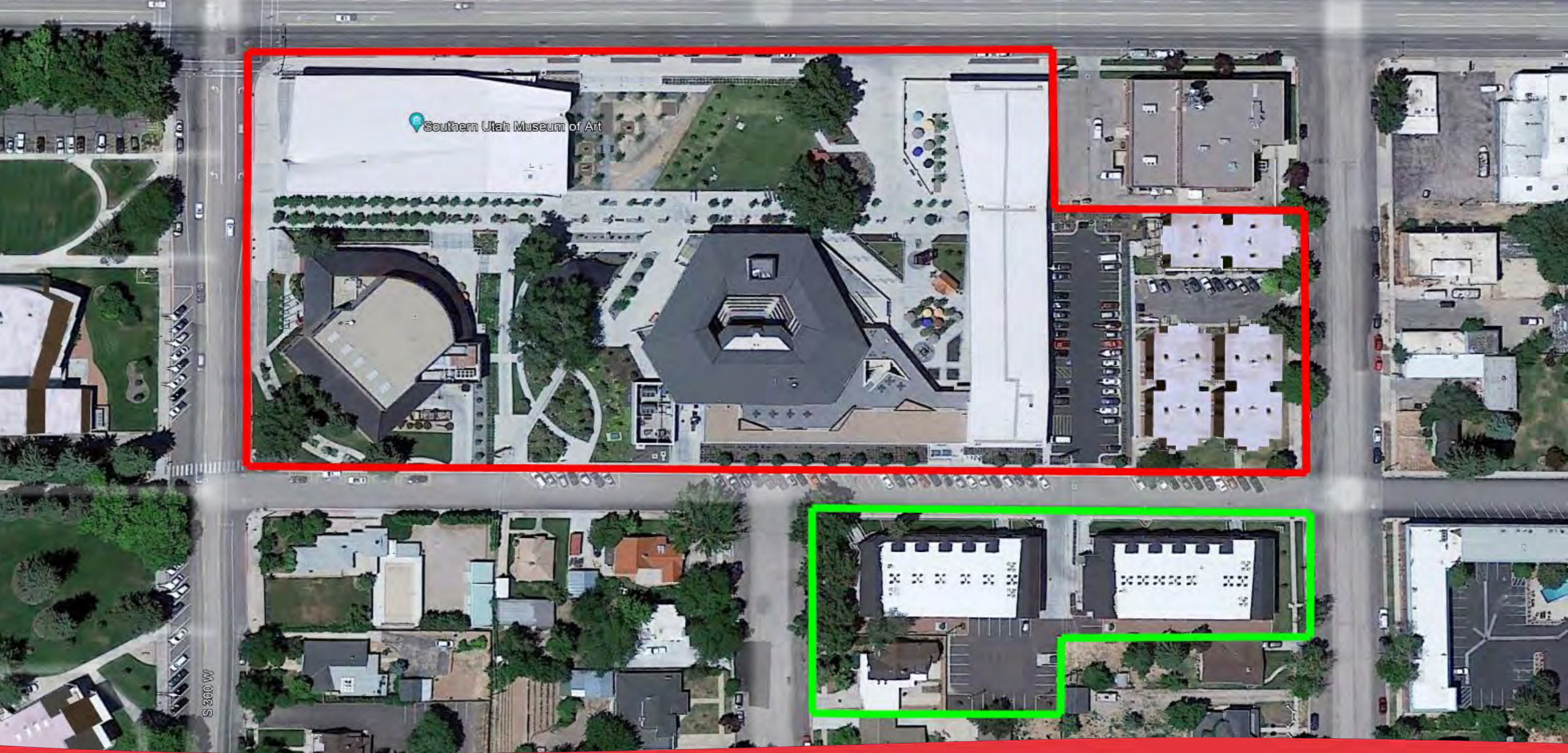
# The Cottages

Solutions



Additional Housing





Location – Beverly Center and the Cottages



# Strategic Uses

## Solutions

- Student Housing – single or married
- Shakespeare Festival Company Members
- Summer Air B&B
  - Business School Hotel & Hospitality Mgmt. Students
- Transitional Housing for new hires
- University Guest House



Strategic Uses



# 30-Year Revenue Bonds

## Appraisals and Costs

- \$10,260,000      The Cottages (\$246/sqft)
  - \$ 365,000      Residential Home/Rental 93 S 200 W
  - \$ 650,000      Pre-payment hedge for early sale (Opportunity Zone)
  - \$ 225,000      Estimated bond issuance costs
  - \$11,500,000      Total Estimated Costs
- 
- Bond Authorization for up to \$12.0 million (to be limited to actual costs)
  - Lease agreement with Board and Legislative approval
    - Assume management prior to summer

Non-State Building Request – Bond Authorization

Thank you!





# Motion

I move to grant approval to Southern Utah University to seek legislative authorization to issue revenue bonds for the acquisition of “The Cottages at Shakespeare Lane” apartment complex and adjoining home.

# Motion

I move to approve the long-term lease for housing in Richfield, with terms as presented.