

Snow College

Land Bank Substitution



State and County Population Estimates for Utah: 2022

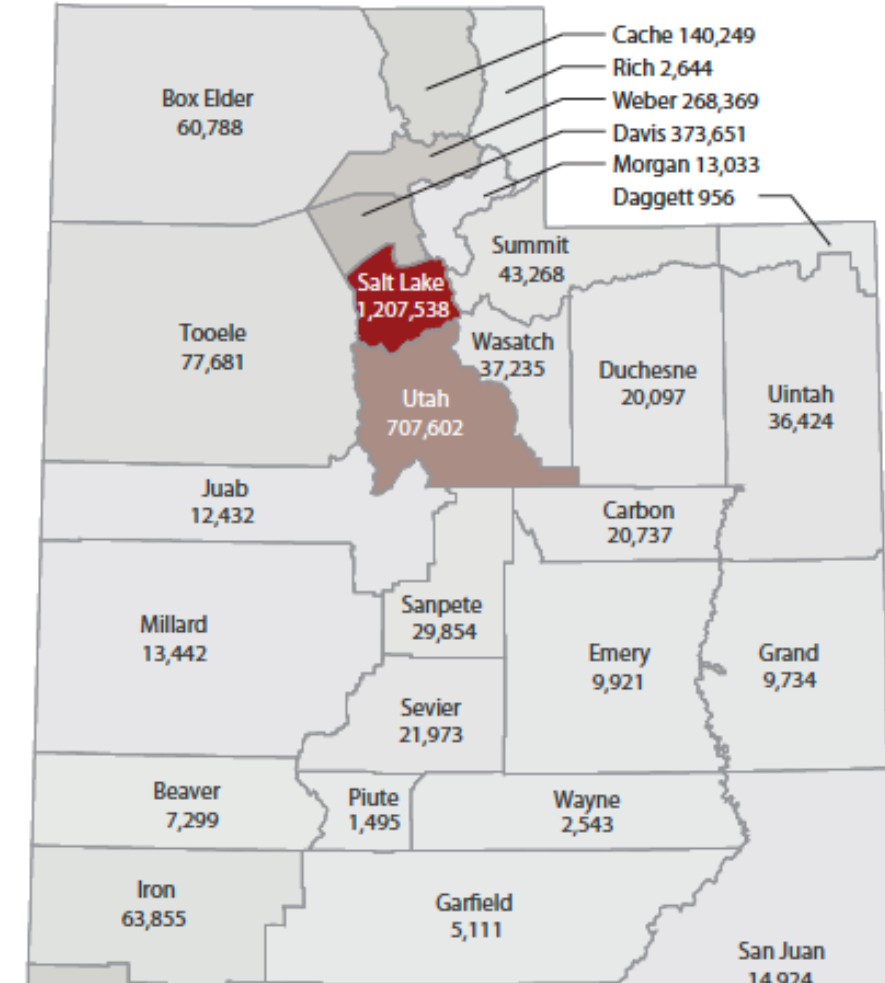
Authored by Eric Albers, Research Associate, Mallory Bateman, Director of Demographic Research, and Emily Harris, Senior Demographer

Summary

July 1, 2022 estimates produced by the Utah Population Committee indicate a total population of 3,404,760, adding 61,242 residents to the state since July 1, 2021. The midyear reference date of these estimates reflects the economy opening up and thriving with the unwinding of the pandemic, leading up to a turning point in the economic picture, resulting in a different growth trajectory in the latter half of 2022. The 2023 population estimates will likely capture that slow down. Several aspects of last year's growth continued this year. In the estimates period, population growth continued to be strong at 1.8%, largely driven by net migration (62% of new residents). Increasing deaths continued to negatively impact natural increase; however, births increased for the first time since 2015. The combined effects of these shifts resulted in a natural increase of over 23,000 or 38% of Utah's growth.

Twenty-eight counties grew in 2022, all but one driven by net migration. For the second year in a row, Iron County experienced the fastest population growth (4.3%). Wasatch, Utah, Kane, Rich, Juab, and Sanpete counties were the next fastest growing respectively, and all grew by over 3.0%. Utah County added the most population, totaling 23,980 new residents, over 39% of

Figure 1: Utah Population Estimates, 2022



Among fastest growing areas in the state

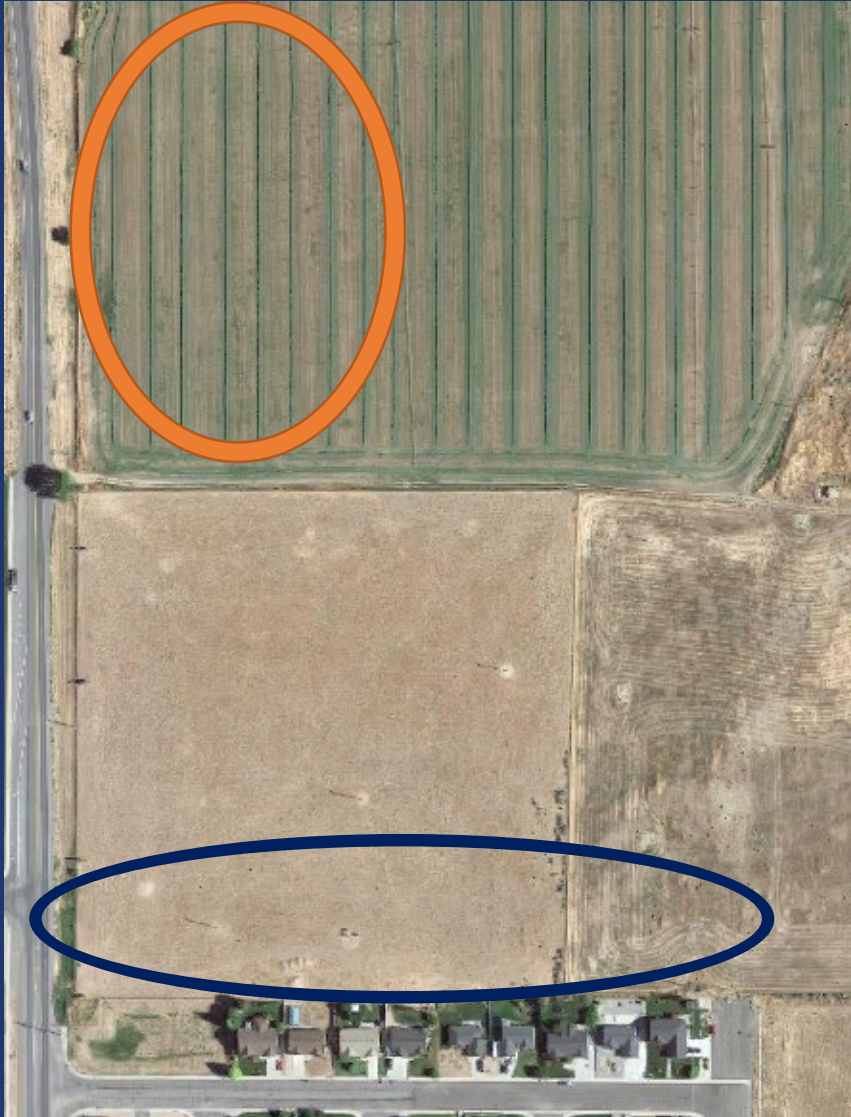
Land Bank requests focused on Sanpete and Juab Counties

CENTRAL VALLEY MEDICAL CENTER = \$2.0 million



- Original proposal
 - ~2 acres
 - Building (in need of extensive renovations)
- Substitute proposal
 - 5 acres
 - Open space
 - Better access from Main Street
 - Greater visibility from I-15

Neighboring property = **\$1.1 million for 2.8 acres**



- Mixed commercial/residential
- Appraisal has been ordered

Future plans



- Dedicated/non-dedicated/fundraised
- Small educational facility
- Focused on healthcare training and local economic needs

Questions?