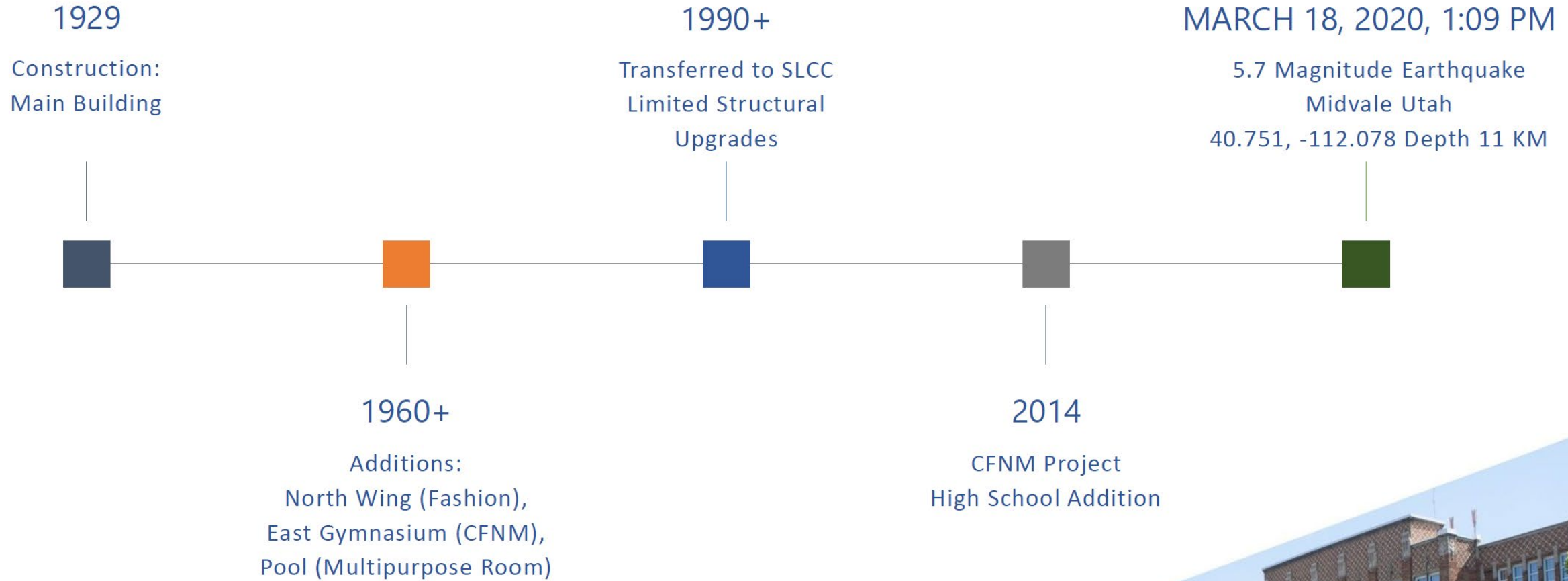


Salt Lake Community College Dedicated Capital Request

Utah System of Higher Education

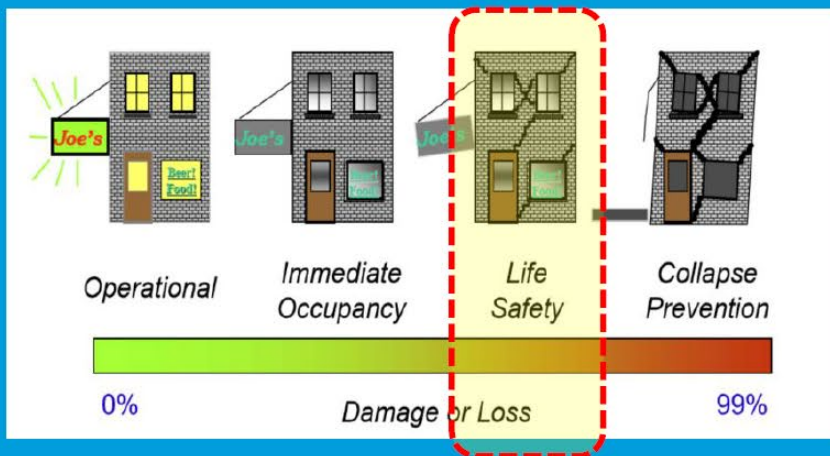
October 4, 2024

SOUTH HIGH TIMELINE



SCM - Seismic Study Commissioned

- Seismic Evaluation Report Completed
 - Standard: (ASCE) 41-17 Tier 2 Methodology
 - CFNM: Not Included
 - FEMA: Sponsored
 - Criteria: Life Safety



Safe Evacuation
Full Facility Loss Potential

SCM - Seismic Study Area



1961 North Addition

1929 Original Building

40.735264, -111.886878

Image Landsat / Copernicus

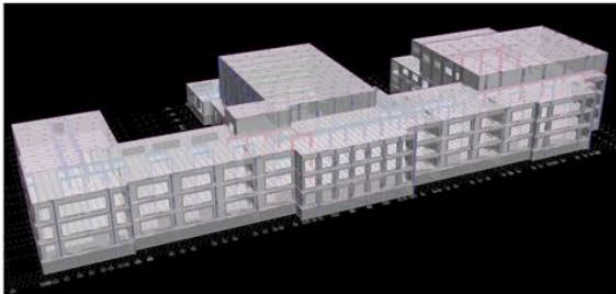


Figure 7 - RAM Model of the 1929 Original Building

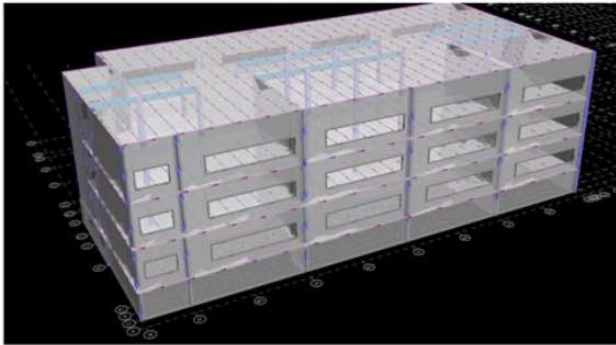


Figure 8 - RAM Model of the 1961 North Addition Building

Project Scope & Request

Seismic Upgrade Project for South City Campus

- Retrofit to structurally improve the performance level to Life Safety in the even of a significant seismic event.
- Project would be phased over time.
- Leveraging FEMA funding – with 25% match
- SLCC requesting \$9,426,600 of dedicated funds for match
- Total Project Cost for Phase 1: \$37,706,400