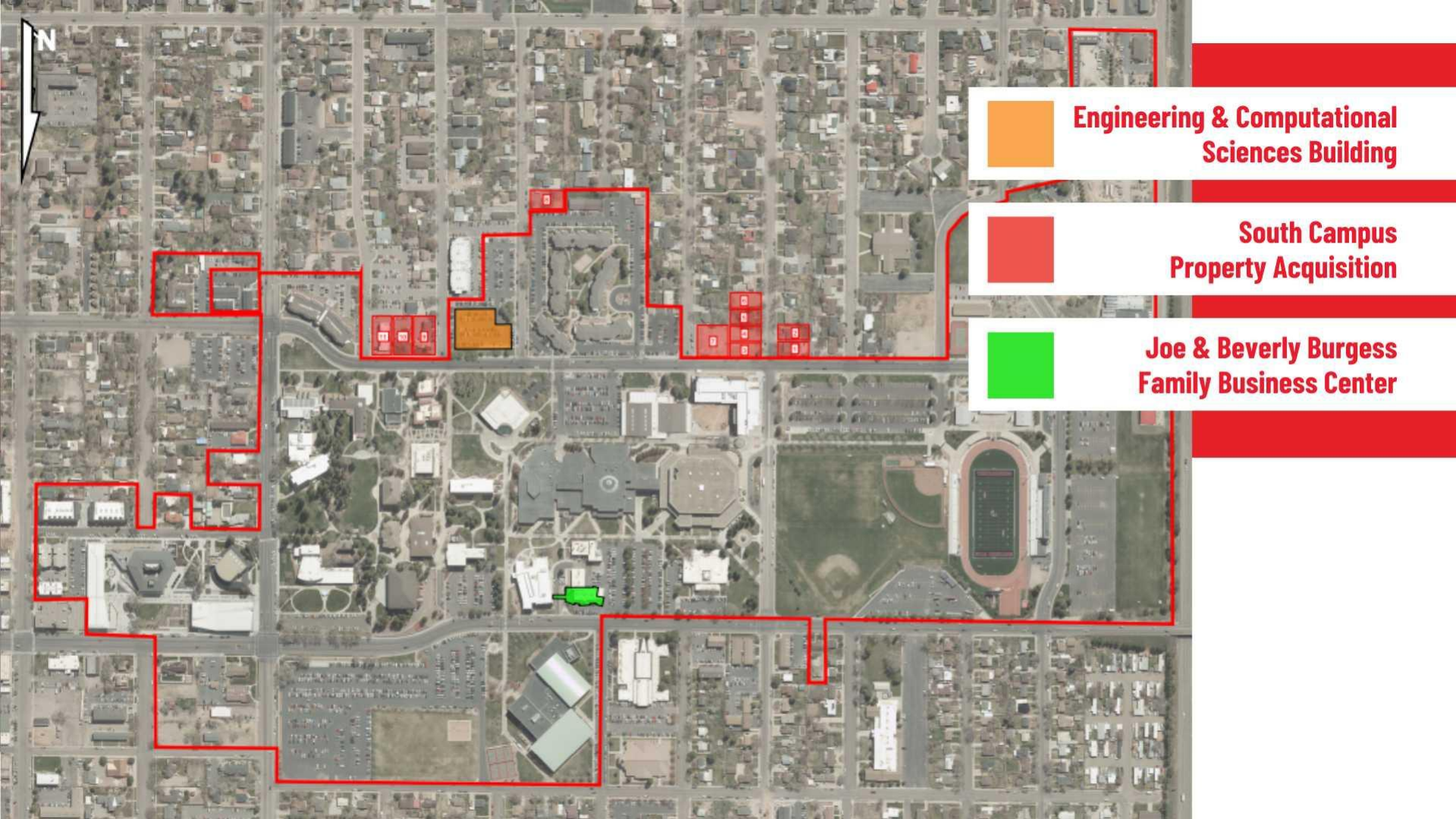


# SUU

## SOUTHERN UTAH UNIVERSITY

UTAH BOARD OF HIGHER EDUCATION  
OCTOBER 4, 2024





N



**Engineering & Computational Sciences Building**



**South Campus Property Acquisition**



**Joe & Beverly Burgess Family Business Center**

# Non-dedicated Funding

**Engineering &**

**Computational**

**Sciences Building**

# High Impact Degrees for High Demand Jobs



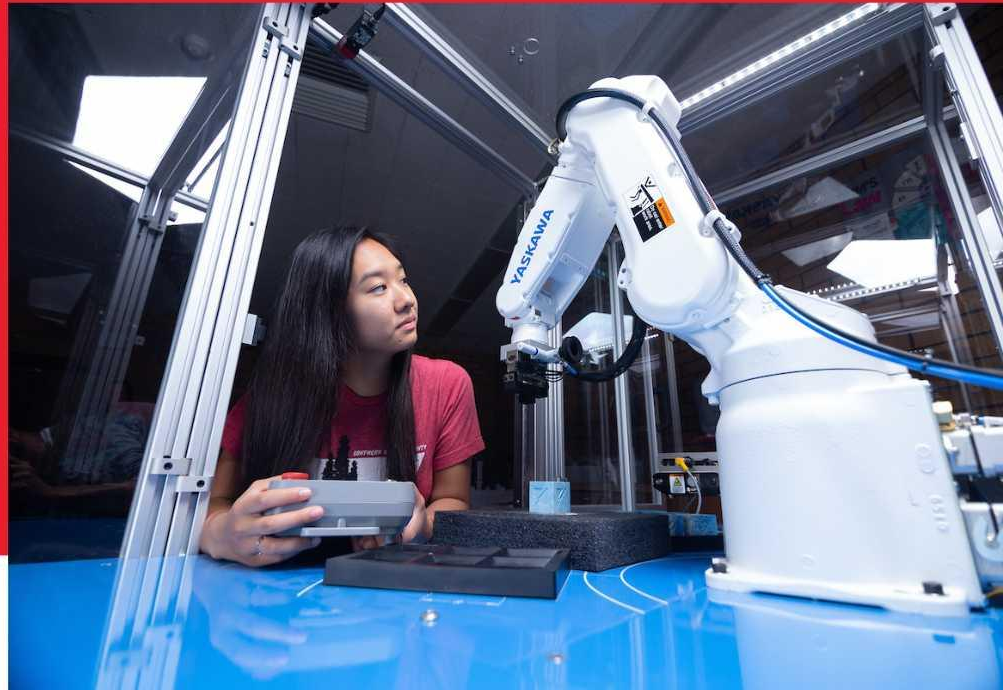
**72% OF ALL DEGREES in  
4 & 5 STAR JOBS**



**OVER 95% JOB PLACEMENT IN  
4 & 5 STAR JOBS**



**87% OVERALL PLACEMENT RATE**





# 1,700 Students and Growing

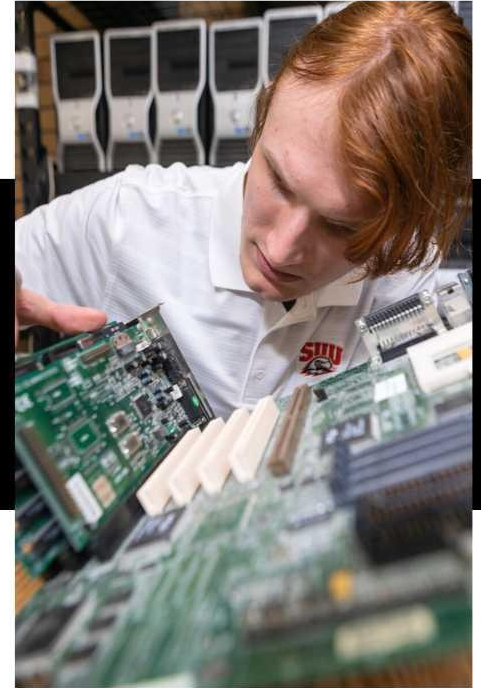
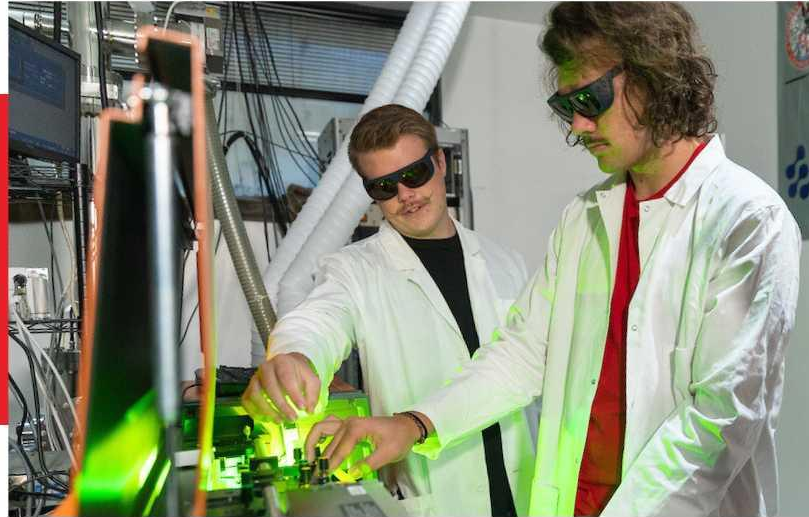
- **DOUBLED ENROLLMENT  
IN PAST 6 YEARS**
- **58% INCREASE IN ACADEMIC  
PROGRAMS IN 2023-24**
- **LIMITED DEDICATED LAB  
SPACE**

# 95,000 sq ft replacing 42,435 sq ft

- ENGINEERING
- CYBERSECURITY
- COMPUTER SCIENCE
- CONSTRUCTION MANAGEMENT
- DATA SCIENCE
- AVIATION
- MATHEMATICS
- PHYSICS



# 25 Specialized Labs for for Future-focused Learning





# Cutting Edge Classes on the

# South Edge of Campus



# Proposed Facility Funding



**LEGISLATIVE SUPPORT:**

**\$43 Million**

**DEDICATED FUNDING:**

**\$17 Million**

**DONOR SUPPORT:**

**\$20 Million**

**TOTAL BUILDING COST:**

**\$80 Million**

# Space Utilization

## ONGOING YEAR-OVER-YEAR GROWTH PATTERN

- **Seat Occupancy Rate = 92.34%**  
of USHE standard
- **Room Utilization Rate = 92.44%**  
of USHE standard

March 2024 USHE Space Utilization Report



# Your Support for Their Future

**"It is imperative that SUU update the facilities students in the College use to ensure they are using state-of-the-art equipment and learning in an environment that is conducive to their academic success and future careers."**



# Dedicated Funding

**Joe & Beverly  
Burgess Family  
Business Center**

# 20,840 New Gross Square Feet

to serve the growing demand  
for programs in the Dixie L.  
Leavitt School of Business



**100% OF DEGREES IN 4 & 5  
STAR JOBS**



**66.3% INCREASE IN MAJOR**



**97% OVERALL JOB PLACEMENT  
RATE**





# **\$1.36 Million Dedicated Funds**

**DUE TO AN UNFAVORABLE BID  
ENVIRONMENT, CONSTRUCTION BIDS  
WERE OVER BUDGET (EVEN AFTER  
A VALUE-ENGINEERING PROCESS)**

**Spring 2026 Completion**





# Facility Funding

**DEDICATED FUNDS: \$12.5 Million**

**INSTITUTIONAL FUNDS: \$2.34 Million**

**DONOR FUNDS: \$2.5 Million**

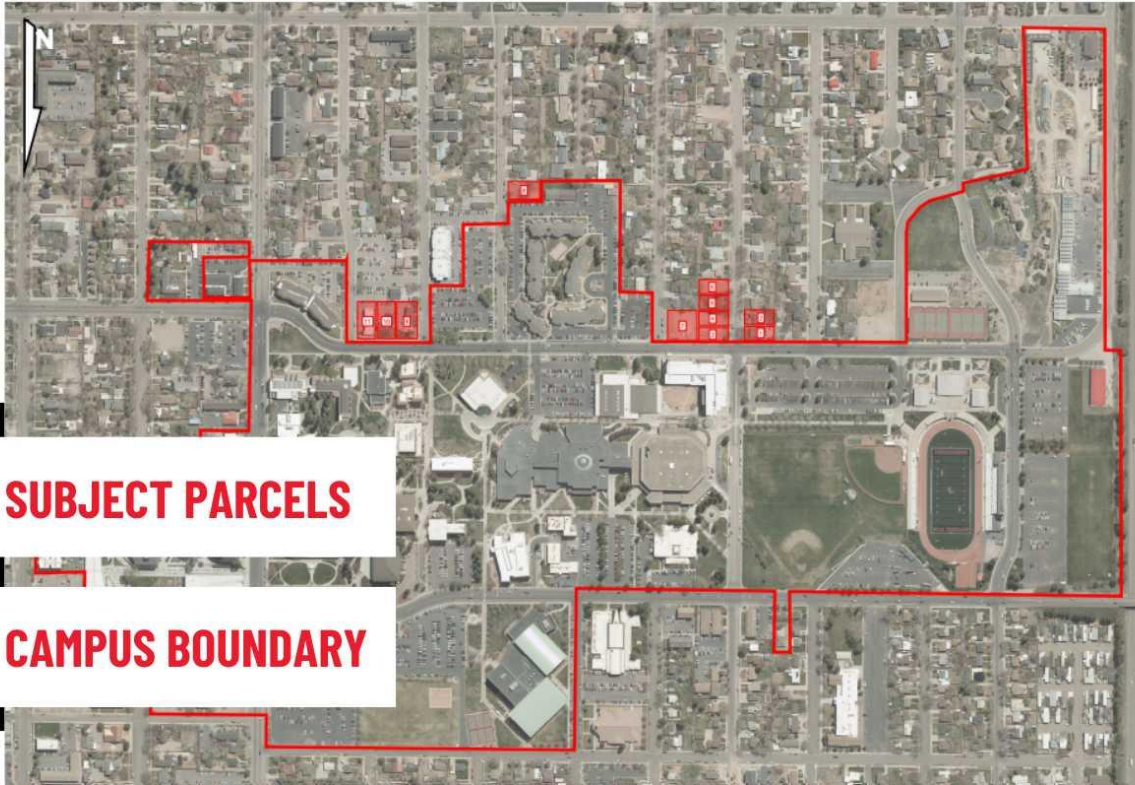
**ADDITIONAL DEDICATED  
FUNDING REQUEST: \$1.36 Million**

**TOTAL BUILDING COST: \$18.7 Million**

**South Campus**

**Property  
Acquisition**

# Once in a Generation Opportunity: South Campus Property



**SUBJECT PARCELS**



**CAMPUS BOUNDARY**

**DEDICATED FUNDS  
REQUEST:  
\$6,635,000**

# Thank You

