



SOUTHWEST TECH

FY2026 Capital
development
project request



IntroDUCTION

- Master Plan & Feasibility Study
- Identification of deficiencies and needs
- STECH'S last new building was in 2014



"Becoming a Paramedic has been a dream come true. Being a single parent and over 45yr old, had many people doubting my ability to succeed. With Nancy's help and a great deal of tenacity I was able to succeed and become a Paramedic. Now I am able to support myself and my children by working in a profession I truly love." - Sarah Englestead -

Objectives

New Public Safety Building

- Creates space in the current building for other programs to expand

Alignment with our institutional mission and strategic plan: By enhancing our capacity in these programs, we can facilitate growth and expansion:

- Programs:
 - Firefighting
 - EMT
 - AEMT
 - Paramedics
 - Welding
 - Industrial Maintenance
- Addresses growing demand for skilled public safety professionals
- Current programs are already funded



SITE LEGEND

1. HEALTH PROFESSIONS AND TRADES BUILDING (HPTB)
2. INNOVATION CENTER
3. LAND BANK PRIORITY 1
4. LAND BANK PRIORITY 2
5. CEDAR HIGH SCHOOL
6. BLVD HOME STORE
7. CITY SCHOOL DISTRICT TEMPORARY CLASSROOMS



MASTER PLAN LEGEND

- A** HEALTH PROFESSIONS AND TRADES BUILDING (HPTB)
- B** EXPANDED PARKING
- C** CAMPUS GREEN
- D** PUBLIC SAFETY BUILDING
- E** EQUIPMENT BAYS
- F** STUDENT PARKING
- G** FIRE TRAINING TOWER
- H** TRAINING YARD



Growth Since last Facility

FTE is up **58%**

Headcount is up **61%**

Completions is up **102%**

Key student indicators

Fall-to-fall retention full time **93%**

Fall-to-fall retention part time **68%**

High Yield Graduates **74%**

Timely Completion **64%**



Demand

REGION

Population
Increase(%)

Job
Increase(%)

U.S. Bureau of Labor Statistics Job
Outlook,
% Growth 22-32

Beaver

10.5%

5.3%

Garfield

0.1%

11.9%

Iron

22.0%

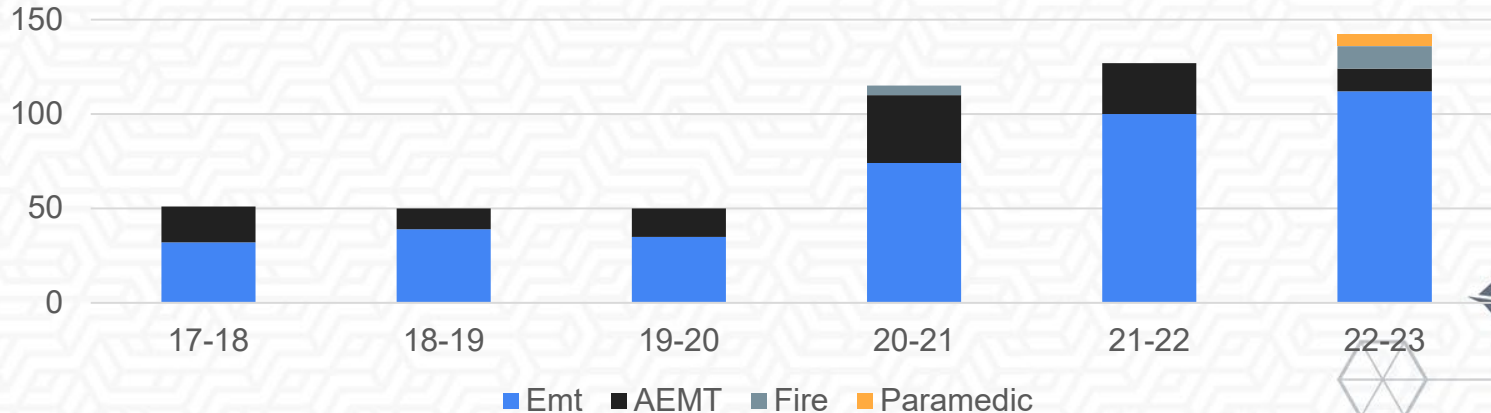
15.9%

Kane

10.1%

10.1%

Firefighter 4%,
EMT, AEMT & Paramedic 5%



partnerships



UTAH DEPARTMENT OF
HEALTH



Intermountain
Health



Proposed Project

Key Elements of Public Safety Building

- Expansion of public safety programs into a dedicated facility
- Enhances community perception of quality, hands-on education
- New state-of-the-art facilities unique to the region
- Facilitates collaboration through integrated training scenarios
- Aims to recruit and retain top-quality students and faculty

Points scored

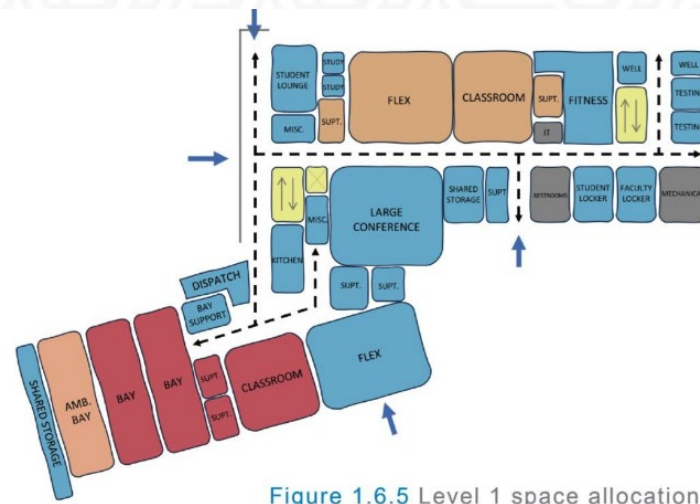
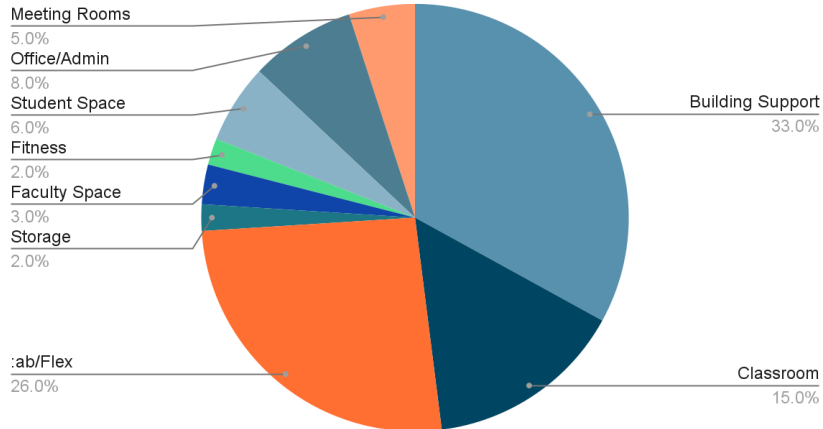


Figure 1.6.5 Level 1 space allocation by program

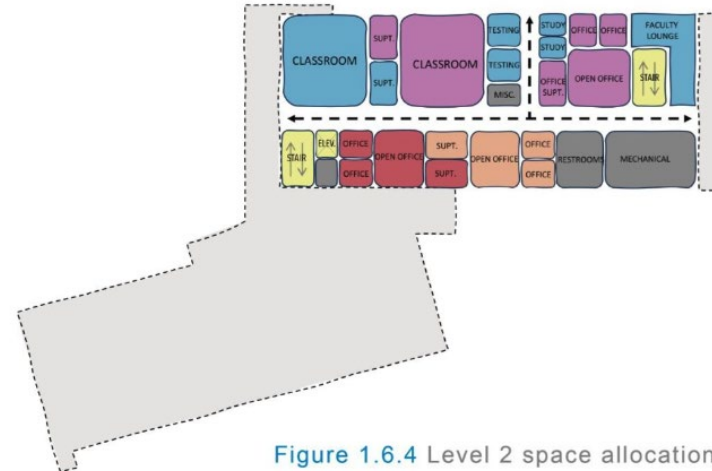


Figure 1.6.4 Level 2 space allocation by program

Projections

Funding request will significantly increase capacity of public safety programs.

Current Enrollment projected at 682 students at completion.



"Becoming a Paramedic is something I have wanted since I started in the Fire service, Due to other programs being too costly and not working with my schedule I did not feel that this would be something I would be able to complete. I found this program, which was cheaper than most, worked around the Fire schedule, and allowed me the opportunity to not only become a Paramedic but also a better provider.

- Braedon Butterfield -

Enrollment projections:

- 794 students (3 years after)
- 869 students (5 years after)
- 1,057 students (10 years after)

Growth reflects enhanced capacity to serve community and local public safety agencies.



Justification for project

The project meets public safety training needs, invests in labor development, expands manufacturing, and aligns with state economic goals, ensuring effective resource use for education and workforce growth in Utah.

- **Cost-effective use of resources** with a new public safety building at Southwest Tech.
- **Purpose-built facility** for public safety training:
 - Better addresses unique program needs than repurposed spaces.
 - Features dedicated training areas, labs, and equipment storage.
 - Maximizes training effectiveness for emergency services and firefighting.
- **Enhances labor development** in public safety:
 - Prepares a skilled workforce to meet demands.
 - Supports expansion of essential public safety roles.
- **Freed-up space** for expanding manufacturing programs:
 - High demand for manufacturing education.
 - Re-purposing avoids additional construction costs.
- **Aligns with the Governor's economic plan:**
 - Supports key industries like manufacturing and healthcare.
 - Provides facilities that enhance workforce readiness.



“ This Paramedic program is definitely about professionalism, integrity, and passion! It doesn't matter what program you are going to be attending you get what you put into yourself. Nothing that is worth it comes easy, plan on 12 months of your life to be dedicated to school” - Logan Bingelli -

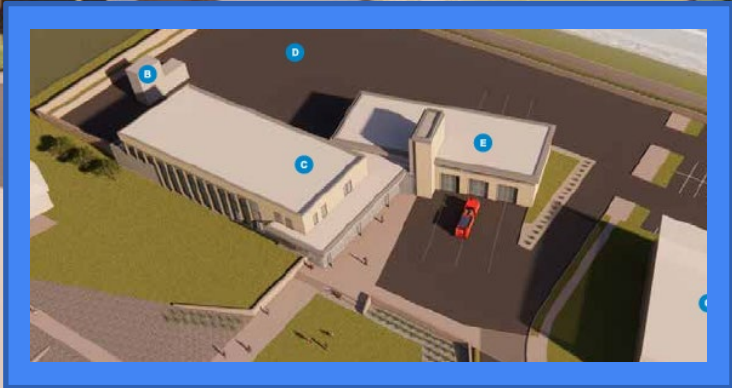
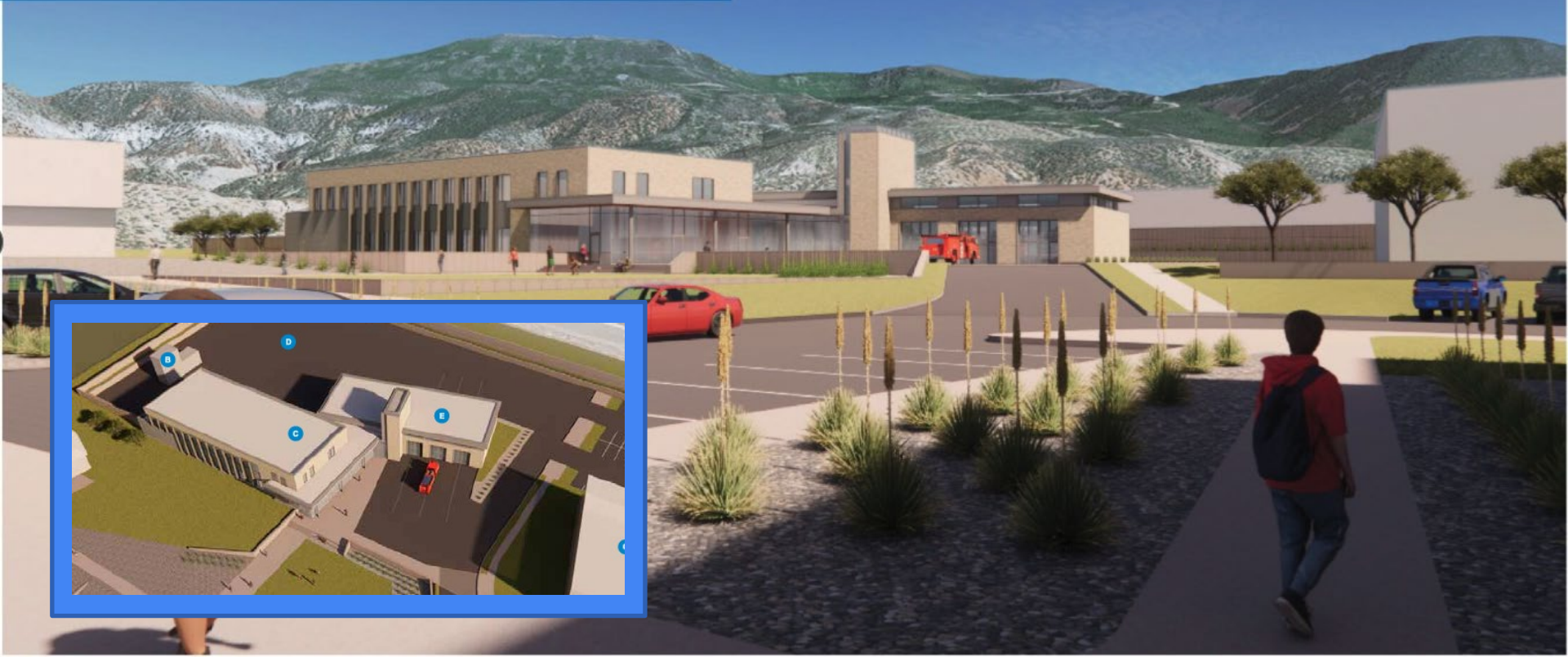
Budget Overview

Building Costs	\$719.74 SF	\$19,781,433.04
Site Costs	\$153.59 SF	\$4,221,286.79
Pre-Construction Costs	\$62.99 SF	\$1,731,338.29
Property Acquisition	\$0.00 SF	\$0.00
Project Total	\$936.32 SF	\$25,734,058.12



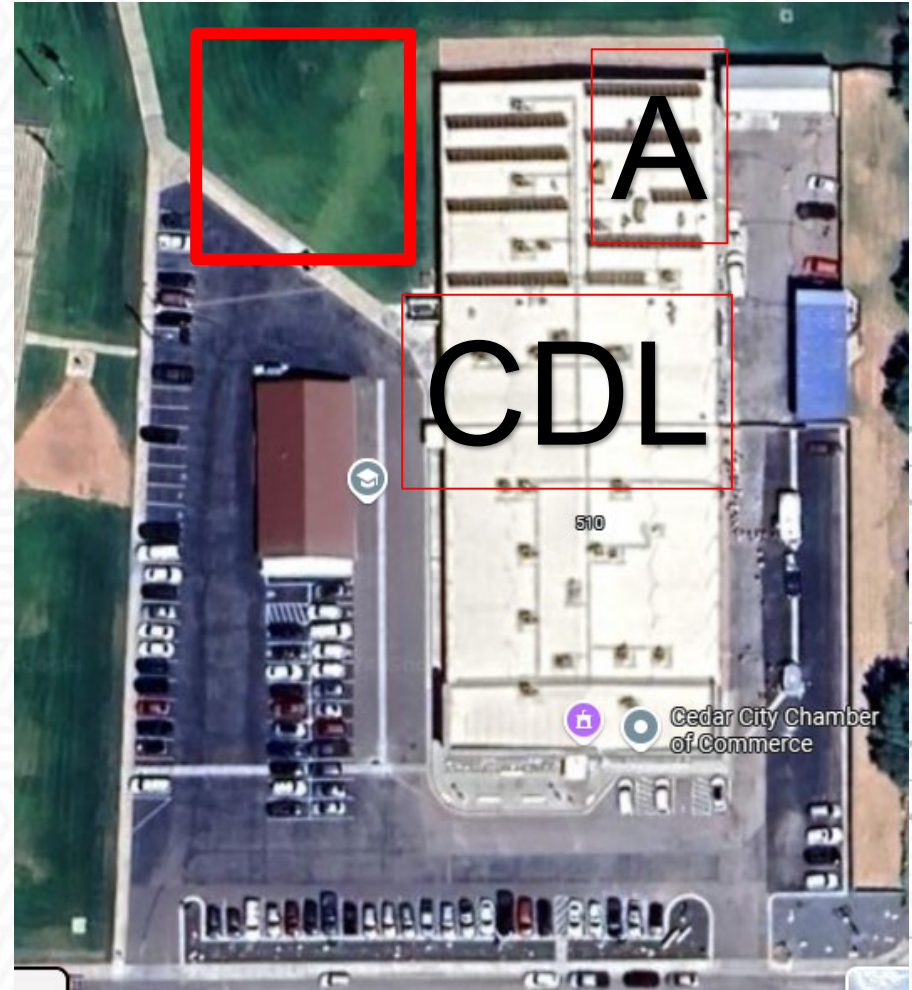
At 16, I never imagined a career in emergency medicine or public safety, but enrolling in the EMT program changed the entire trajectory of my life. The skills and confidence I gained not only opened doors to becoming an AEMT and Firefighter but also ignited a passion I didn't know I had.. - Madalyn Goodman

We're not just a college, we're a village. We hold our community and our employers in high regard. We don't compete, we collaborate.



Diesel Bay dedicated funds request

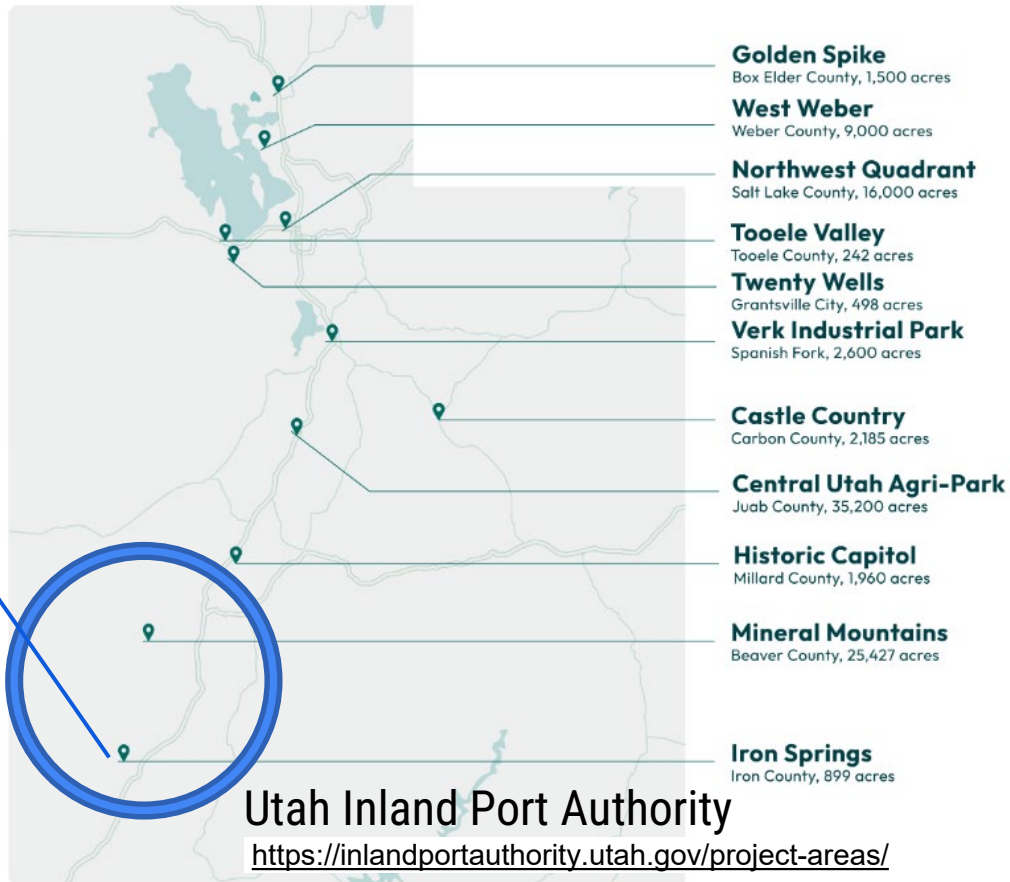
- STECH owns the property
- Compliments Automotive and CLD Programs
- High Demand





BZI - Commerce Crossroads

<https://www.bzi.com/pressnews>
<https://www.stgeorgeutah.com/>





<https://www.stgeorgeutah.com/news>
<https://savageco.com/press-release>

SAVAGE NEW RAIL TRANSLOAD FACILITY

“The addition of this new Savage transload facility to our logistics capabilities is a key component of our strategy. It demonstrates our commitment to facilitating economic growth while fostering environmental sustainability in transportation.”

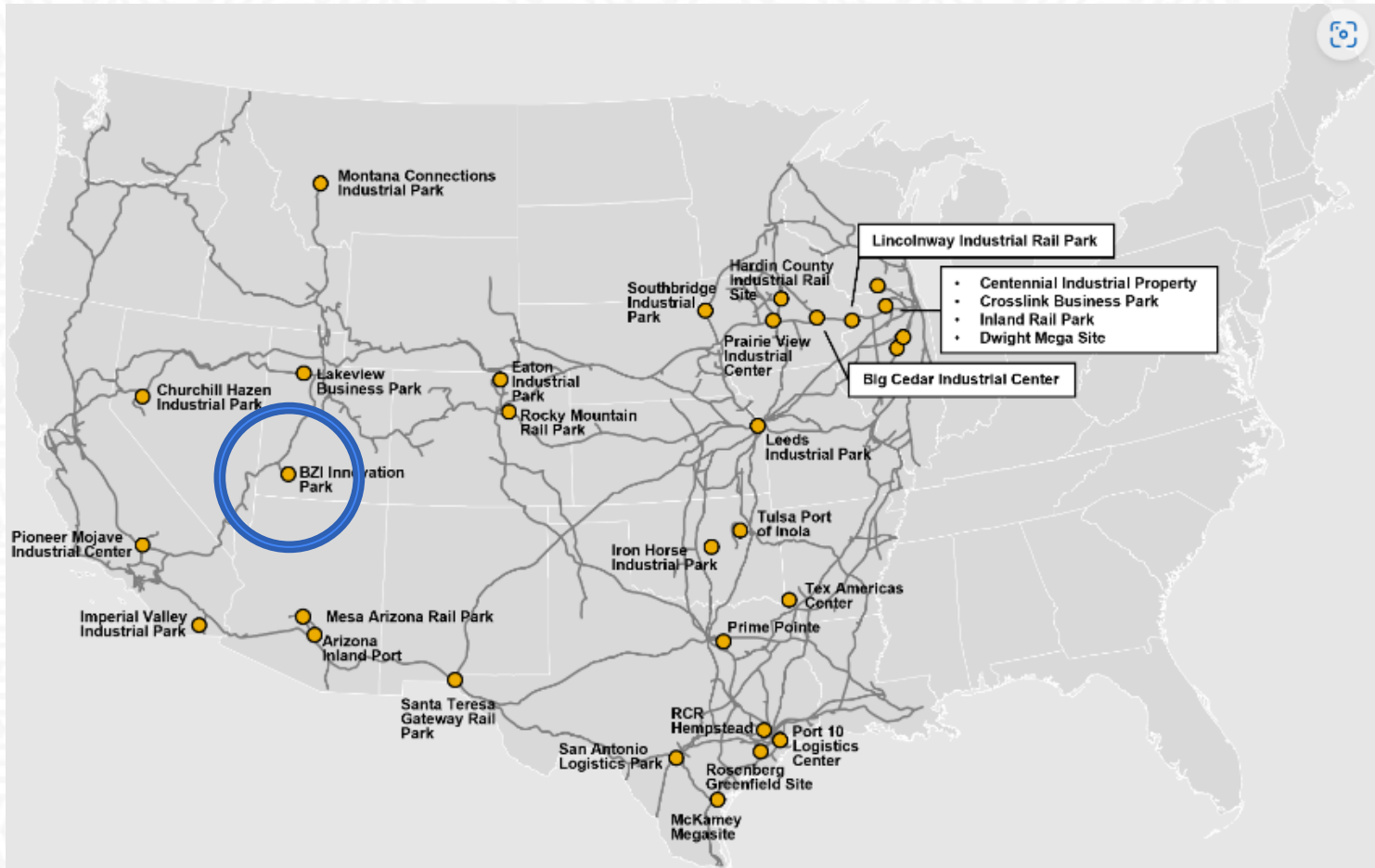
- Ben Hart, Executive Director for the Utah Inland Port Authority



UP Focus Site:

Decreases uncertainty with connecting rail and increases speed to market.

- Rail design approved by UP.
- Large-scale development area
- Utilities and roads accessible to site
- Local development support
- Single controlling land owner





SOUTHWEST TECH

Conclusion & Questions

