



HEALTH SCIENCE BUILDING

UBTECH'S #1 CAPITAL FACILITY PRIORITY

Presented by Aaron K. Weight
Uintah Basin Technical College President and CEO
October 4, 2024



RURAL STUDENTS NEED YOU
RURAL IMPORTANCE



FULLY PROGRAMED

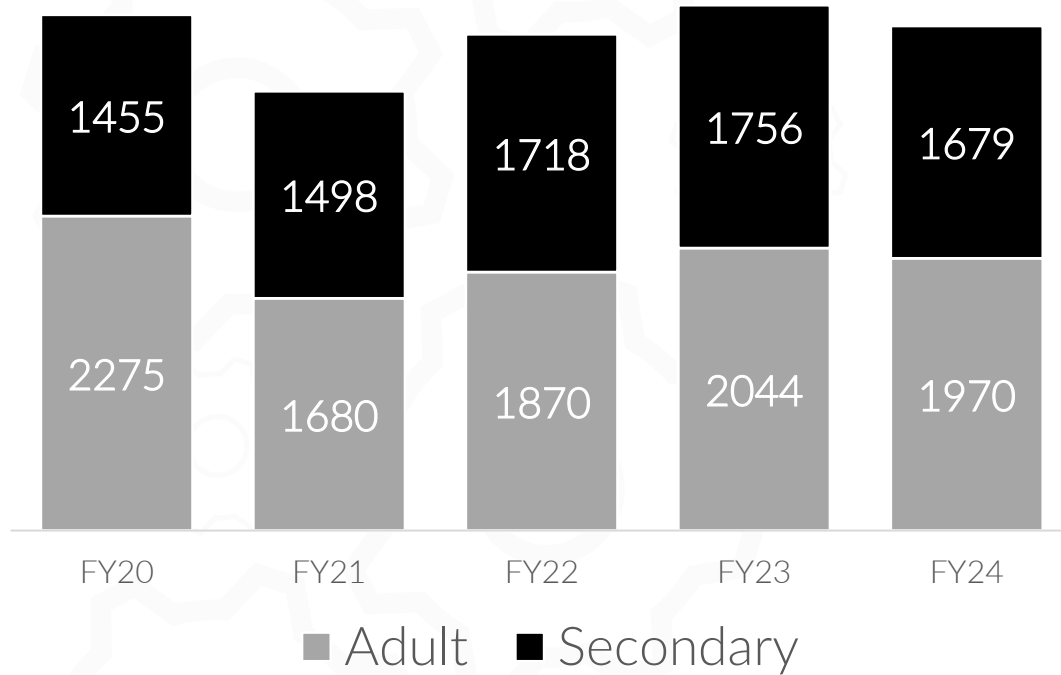
Shovel Ready **SINCE 2022**



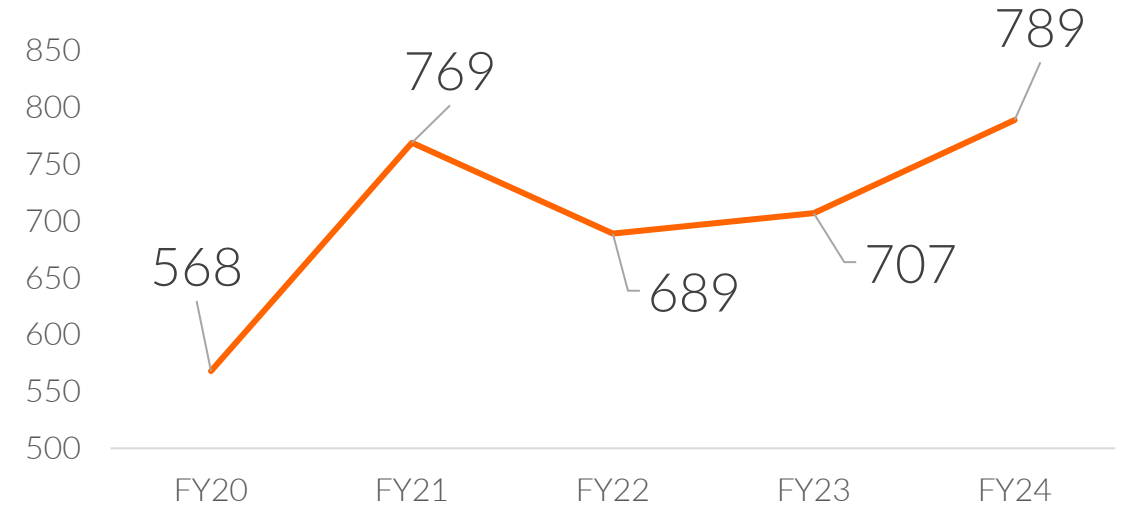
**ECONOMIC
DEVELOPMENT**



UTAH SYSTEM OF
HIGHER EDUCATION



Certificate Count

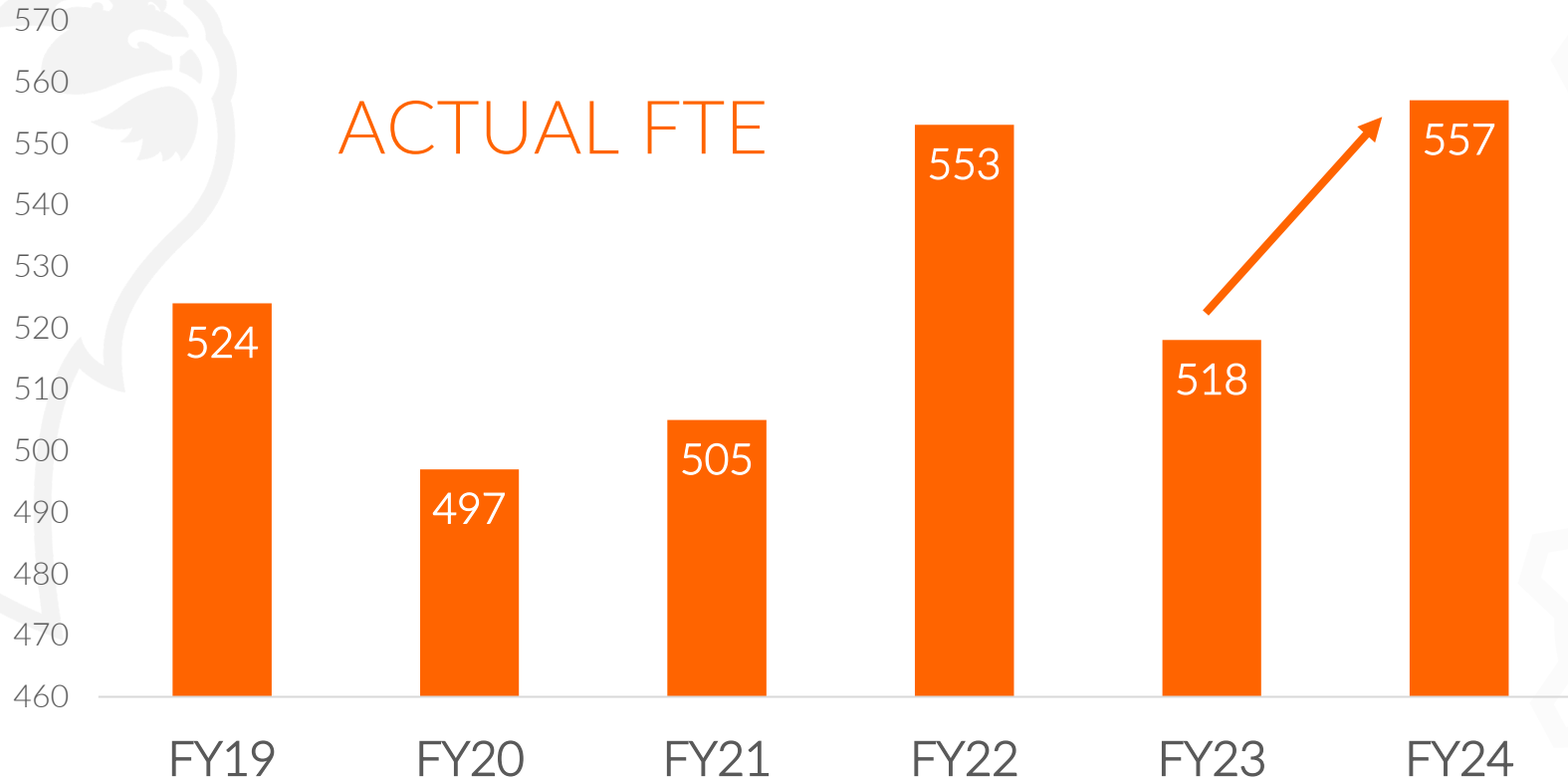


UBTECH'S RURAL UTAH STORY



NOT SO FAST
Smith Study

UBTech – Smith Study Projections	
3 Year Projection	517 (FY25)
5 Year Projection	518 (FY27)
10 Year Projection	516 (FY32)



FTE = 30 Credits
or 900 Membership Hours

*A function of time,
not a function of
programmatic space need*



INSTRUCTIONAL SPACE DEFICIENCY FOR 5+ YEARS

UNABLE TO START OR EXPAND *Industry Requested* PROGRAMS

New Program Requests

- Dental Assisting
- EMT/Paramedic
- Ultrasound Technician
- Medical Lab Technician
- Cardiovascular Technician
- Meat Sciences

Need for Expansion

- Medical Assistant
- Nursing Assistant
- Pharmacy Technician
- Practical Nursing
- Surgical Technician

! Over Capacity!

70 STUDENTS
IN A 16 STUDENT
CAPACITY LAB

UBTECH FACULTY ARE EFFICIENT
UNDER CHALLENGING CIRCUMSTANCES

CURRENTLY ONE LAB FOR ALL PROGRAMS
& INDUSTRY PARTNER TRAINING





52%
INCREASE

46%
INCREASE

**PHARMACY
TECHNICIAN
ENROLLMENT
FALL 2024**

**PRACTICAL
NURSING
ENROLLMENT
FALL 2024**

RURAL UTAH
GROWTH
**PROGRAM
GROWTH**

EXAMPLES OF
HEALTHCARE
PROFESSIONS
PROGRAM
GROWTH

RURAL UTAH GROWTH



CONFERENCE ROOMS

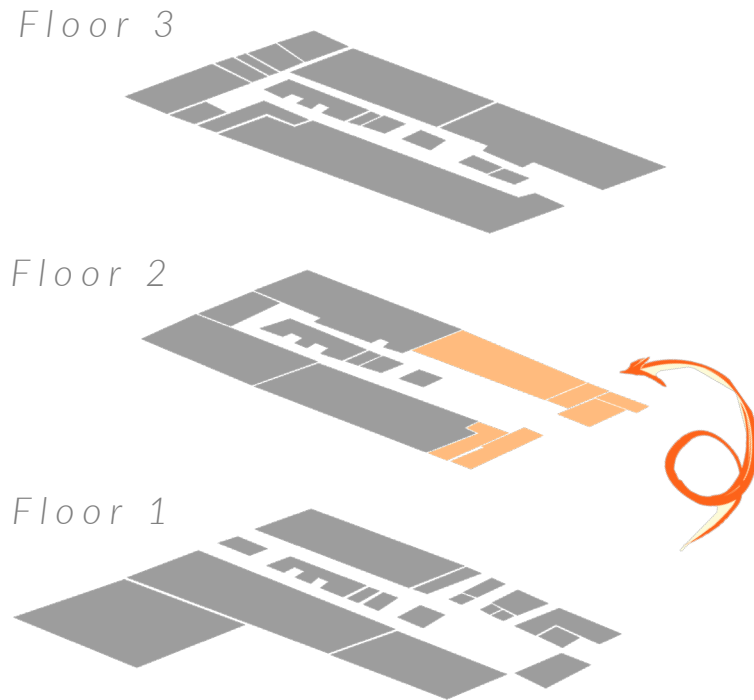
CONFERENCE ROOM SPACE & CLOSETS HAVE BEEN CONVERTED TO CLASSROOM/LAB/OFFICE SPACE

WE ARE LOSING FUNCTIONALITY

Over Capacity!

RURAL STUDENTS NEED YOU

RURAL IMPORTANCE



**STUDENTS DESIRE A
ONE STOP SHOP**

Cicero

Utah Postsecondary Education Voice of the Customer |
Research Study | August 2020

“Students find navigating
the enrollment process
challenging. There is
many handoffs through
required steps.”

Especially first-generation students

RURAL STUDENTS NEED YOU

RURAL IMPORTANCE

NEW BUILDING WILL FREE UP SPACE
FOR ADDITIONAL PROGRAMS



- CDL Expansion*
- POST Academy Expansion*
- Custom Fit Expansion*
- Fiber Optic Technician
- Heavy Equipment Operator
- High Voltage Technician
- Agriculture Technician | 



**ECONOMIC
DEVELOPMENT**

 UTAH SYSTEM OF
HIGHER EDUCATION

RURAL IMPORTANCE



UTAH'S LARGEST INDEPENDENT RURAL HEALTHCARE SYSTEM

"For us to grow, we need UBTech to grow!"

-Jim Marshall, CEO



LIFEPOINT: A LARGE PRIVATE EQUITY PROVIDER

"We have a shortage of physicians; we need additional qualified supporting staff from UBTech in order to grow."

-Alan Olive, CEO



**ECONOMIC
DEVELOPMENT**



UTAH SYSTEM OF
HIGHER EDUCATION

RURAL STUDENTS NEED YOU

RURAL IMPORTANCE

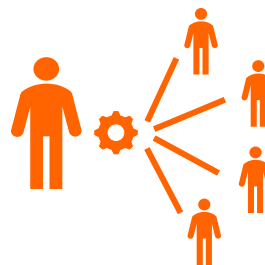
“Since 2022, over 80% of our employees (in healthcare professions) have obtained education at UBTech.”
-Ashley Regional Medical Center

80%
of Employees
are UBTech
Graduates



“Since 2014, we have recruited 74 providers into clinic and hospital operations. We have a plan to add a significant number of additional physicians to continue to meet community needs.” - Uintah Basin Healthcare

UBTech provides the healthcare support staff needed for physicians



Nursing Assistants, Medical Assistants, Surgical Technicians, Practical Nurses, etc.



ECONOMIC DEVELOPMENT

UTAH SYSTEM OF HIGHER EDUCATION



“Protecting Rural”

*1 of the 6 Priorities
set by Governor Cox*



“Our administration is committed to supporting rural Utah and ensuring every Utahn has the access and opportunities they deserve.”

RURAL STUDENTS NEED YOU
RURAL IMPORTANCE

Indicator	Median Personal Income	Median Household Income
Urban Noncompletion	\$39,516	\$39,865
Rural Noncompletion	\$34,565	\$38,387
Urban Completion	\$66,058	\$82,981
Rural Completion	\$97,917	\$100,742

Completion: those who have completed either a Certificate, Associate’s Degree, Bachelor’s Degree, or Graduate Degree.

Noncompletion: those who either did not graduate high school, did not attend college after high school/GED, or did not finish a college degree.



RURAL BUSINESSES NEED YOU

RURAL IMPORTANCE

GROWTH

 The Salt Lake Tribune
[https://www.sltrib.com/news/education/2023/11/02/...](https://www.sltrib.com/news/education/2023/11/02/)

Utah Technical Colleges see growth of almost 1,000 students

WEB Nov 2, 2023 – Utah technical colleges saw an almost 5% increase in overall student enrollment in the first quarter of the 2024 fiscal year, with some schools seeing significant jumps, the Utah System of Higher...

SHORTAGE

 **Rural Utah needs health care workers. Local leaders want the Legislature's help**

KUER 90.1 | By David Condos
Published September 18, 2023 at 6:57 PM MDT

LOCAL NEED

Dear Utah State Board of Higher Education:

As Vice President of Patient Services, I am privileged to write to you in support of Uintah Basin Technical College's (UBTech) Health Science Building proposal. The proposal will direct a significant resource to students engaged in the Health Professions programs (i.e., Medical Assistant, Nursing Assistant, Pharmacy Technician, Practical Nursing, Surgical Technology). These programs provide for the vital and growing needs of healthcare providers in our region. By providing funds directly to support a Health Science Building, UBTech's project will result in high-quality education and training for students in the rural Uintah Basin. A current need exists for this physical space to provide up to date and best-practice standards in healthcare education. The disparity now is manifested by lack of educational space for healthcare programs on both UBTech campuses.

August 29, 2024 09:00 AM

The healthcare worker who will be in top demand

TIM BRODERICK

The U.S. could see a shortage of 100,000 healthcare workers by 2028, with nursing assistants most in demand, according to a healthcare labor market report from New York-based consulting firm Mercer.

Mercer examined 88 healthcare occupations, projecting the surpluses and shortages for each one, resulting in the total net shortage.



“We can focus on communities that are struggling, with a deeper focus on rural Utah and our multicultural communities.” – Governor Cox

STATE FOCUS

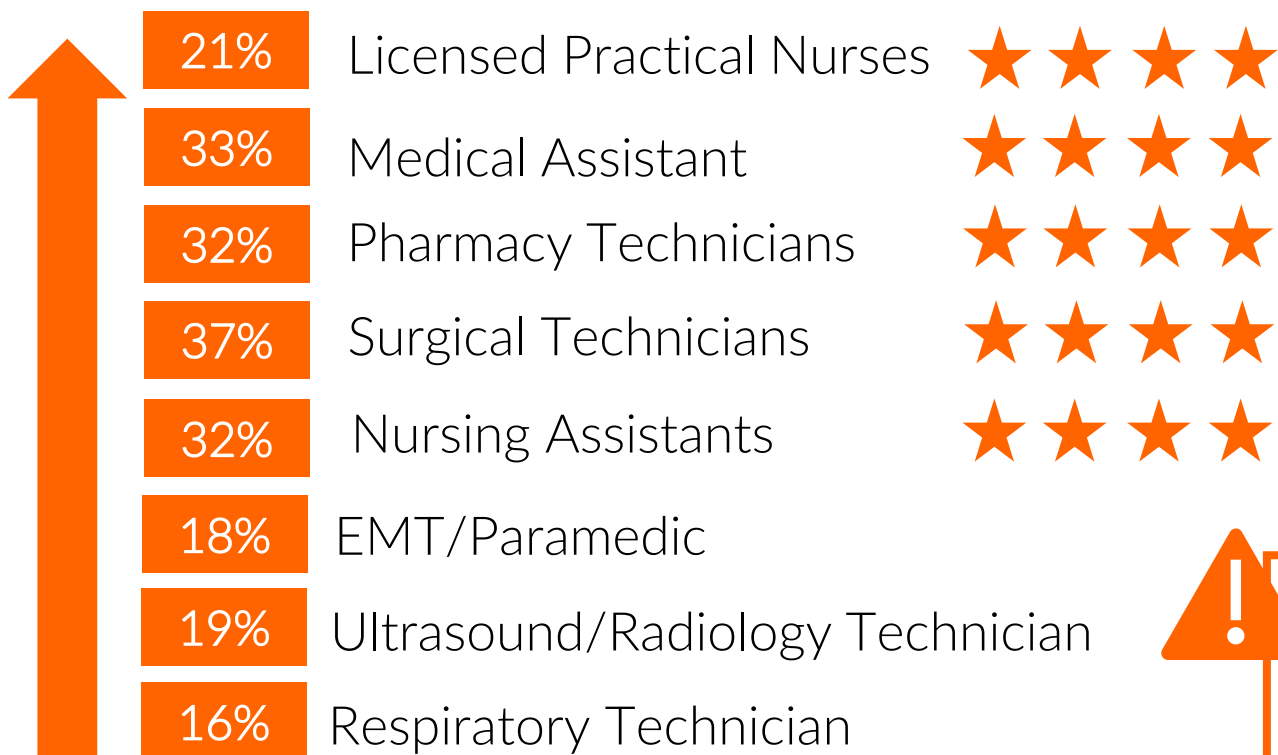
RURAL BUSINESSES NEED YOU

RURAL IMPORTANCE

High-Yield/High-Demand Jobs | DWS/USHE Approved

Projected Statewide Needs - Percentage Increase

Data from Department Workforce Services



!
*Unable to meet
the needs of
local industry*



**ECONOMIC
DEVELOPMENT**

**UTAH SYSTEM OF
HIGHER EDUCATION**

AWARD WINNING COLLEGE



Nursing Process.org

Top 5 LPN Programs in the Western Region



Top LPN Program in Utah
2024



RURAL IMPORTANCE

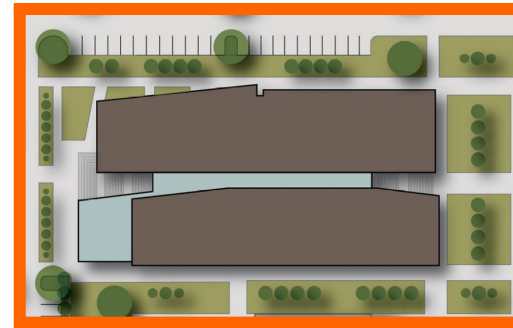
Existing Building



New Parking



INVITATION EXTENDED FOR POTENTIAL
JOINT UTILIZATION



Proposed Building

**BUILDING HAS BEEN PROGRAMMED TO MEET
THE HEALTH PROFESSIONS PROGRAMMATIC
GROWTH NEEDS FOR THE NEXT 10+ YEARS.**



RURAL UTAH NEEDS YOU
RURAL IMPORTANCE

Cost	Amount
New State Funds	\$73,869,800
Dedicated Funds	\$1,091,500
Total Project Cost	\$74,961,300

Total Sq Feet: 92,486

FULLY PROGRAMED
Shovel Ready **SINCE 2022**



RURAL IMPORTANCE

RURAL UTAH NEEDS YOU

41%

Median Wage Increase

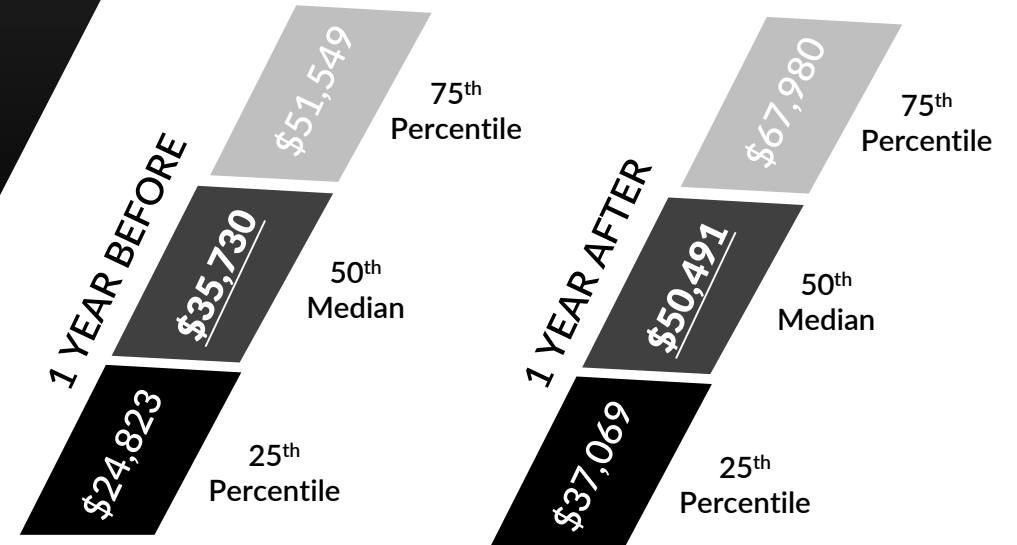
789

Graduates

**NEARLY \$15,000
INCREASE IN JUST 1 YEAR**



**\$11.8M INCREASE
IN TAX PAYER DOLLARS
IN JUST 1 YEAR**



*Data from 2021-2022 Graduates
USHE Graduates Workforce Outcomes Data*



*Fundraising &
Naming Opportunities*
ARE WELL UNDERWAY





THANK YOU

Uintah Basin Technical College
1100 E Lagoon St. Roosevelt, UT | 450 N 2000 W Vernal, UT
435.722.6900 | ubtech.edu

