



WSU FY 2026 Capital Development Dedicated Funds Request

ALLIED HEALTH AND STUDENT SERVICES

Projects Summary

Student Services MEP* & Remodel

- ▶ Partial remodel (46,517 of 84,346 s.f.) for student success support space
- ▶ Update systems and connect to campus groundsource geofields
- ▶ Dedicated funds: \$8,113,222
- ▶ Institutional funds: \$2,500,000

Marriott Allied Health South MEP* & Remodel

- ▶ Partial remodel (24,000 of 89,796 s.f.) for converting classrooms to labs
- ▶ Update systems and connect to campus groundsource geofields
- ▶ Dedicated funds: \$4,335,821

Total Dedicated Funds Cost: \$12,449,043

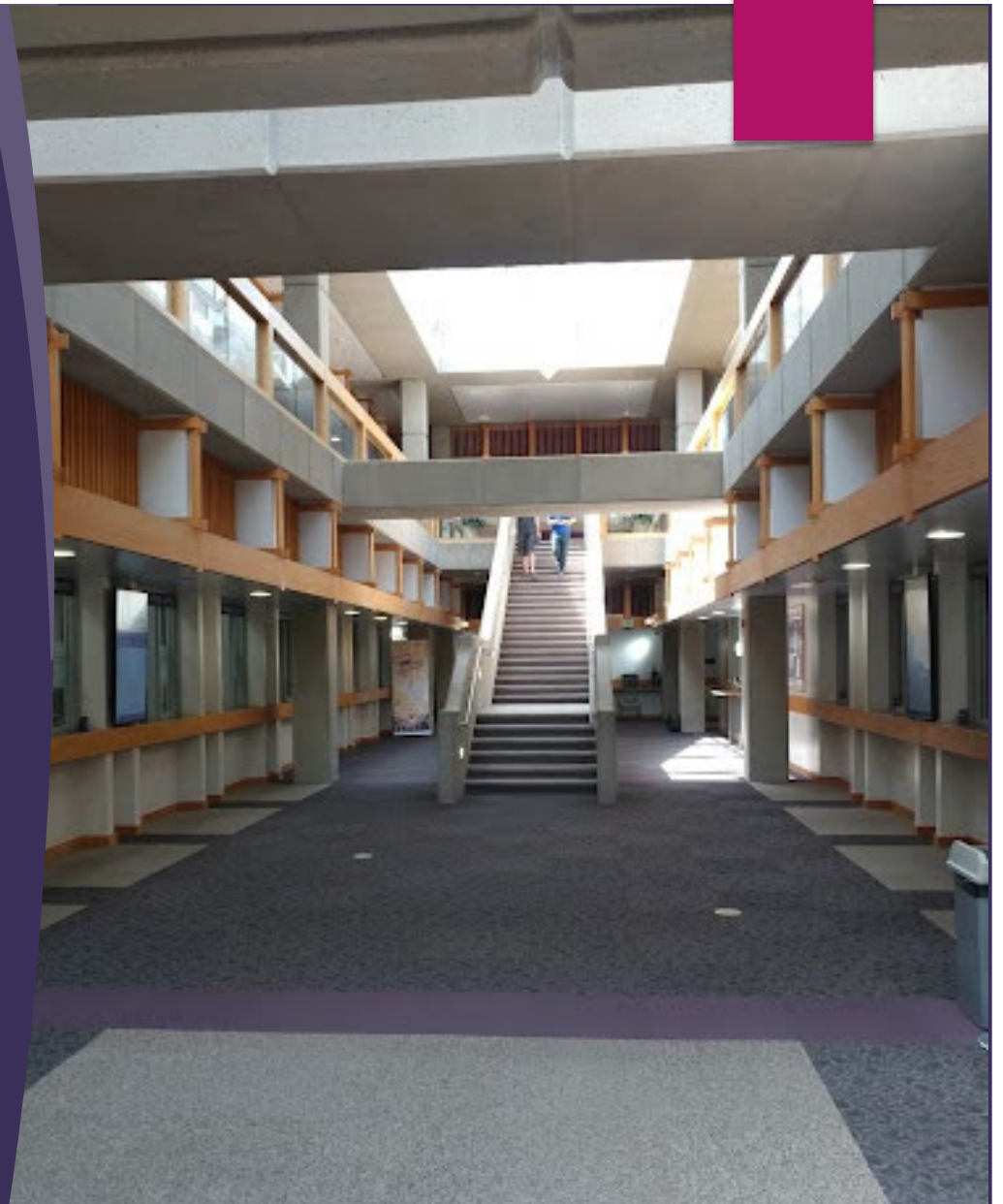
FY 25 Dedicated Funds Available: \$12,158,700

FY 26 Dedicated Funds Anticipated: \$9,354,200

*MEP – Mechanical, Electrical, and Plumbing

Student Services Scope

- ▶ Student Services houses all primary student support centers: Registration (Registrar), Cashier's, Financial Aid, Testing Center, Career Services, Graduation, Counseling, Admissions, Transfers, Scholarships, Academic Success, Disability Services
- ▶ Primarily focused on renovating the south half of the building
- ▶ Modified/Updated Student Success Center focused on improving student success for all WSU students
- ▶ Update of building systems to provide another 30+ years of useful life and improve building performance. North half systems will be updated in following years with capital improvement funds.



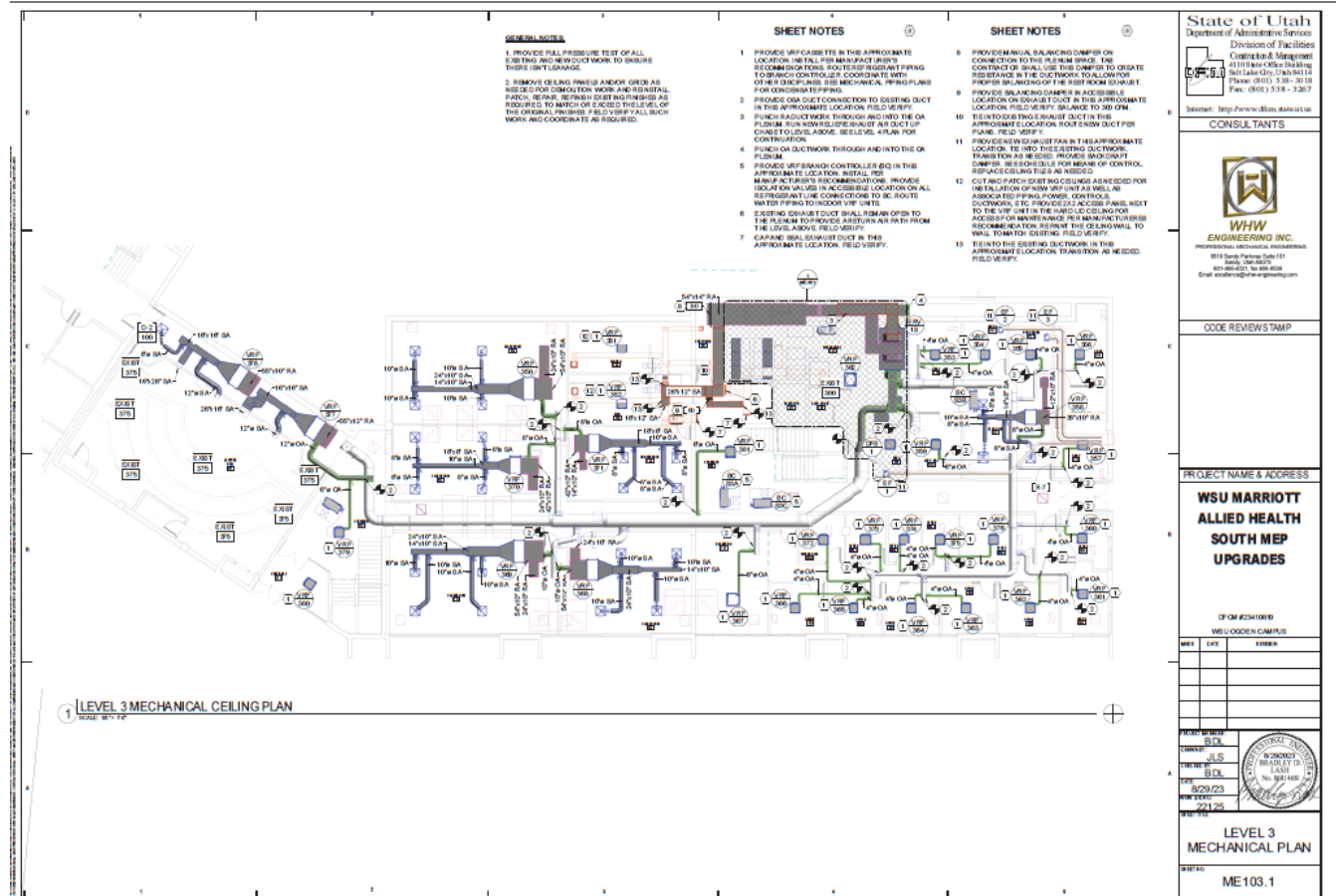
Student Services MEP

Existing MEP VS proposed NEW
30 Year old systems



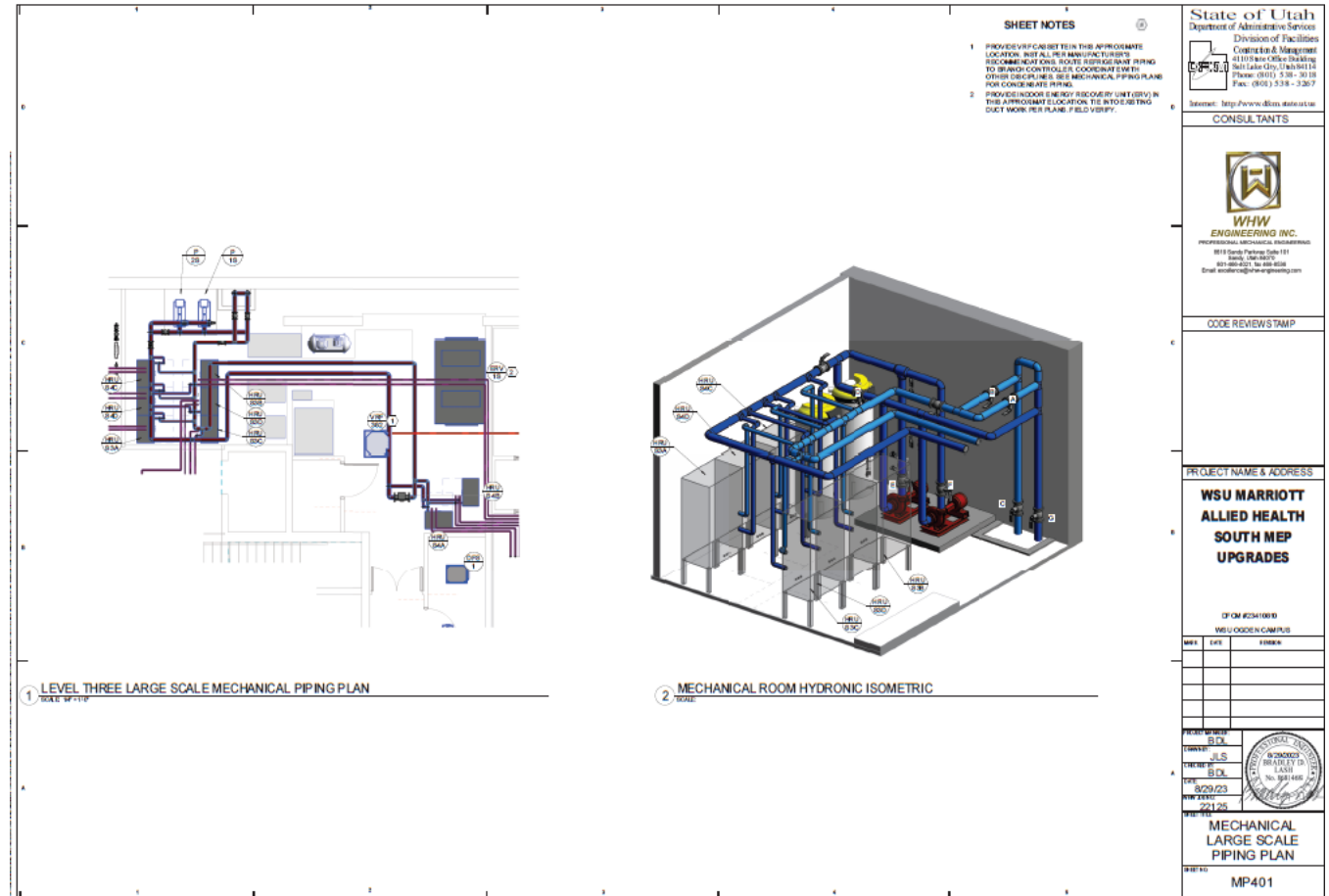
Allied Health State and Schedule

- ▶ The building system portion of the Allied Health design has already been completed. An update will be required for the classroom to lab modifications as well as the restroom updates.
- ▶ Allied Health is planned to start construction in May of 2025 and be completed in August of 2025.



Allied Health Scope

- ▶ Allied Health houses
- ▶ Improve space utilization by converting generic classrooms to labs and moving classes to other buildings with space.
- ▶ Update of building systems to provide another 30+ years of useful life and improve building performance. The north building systems were update in previous years with capital improvement funds.
- ▶ Update restrooms throughout the entire facility.



MH Old MEP vs proposed new MEP

Systems are 35 years old



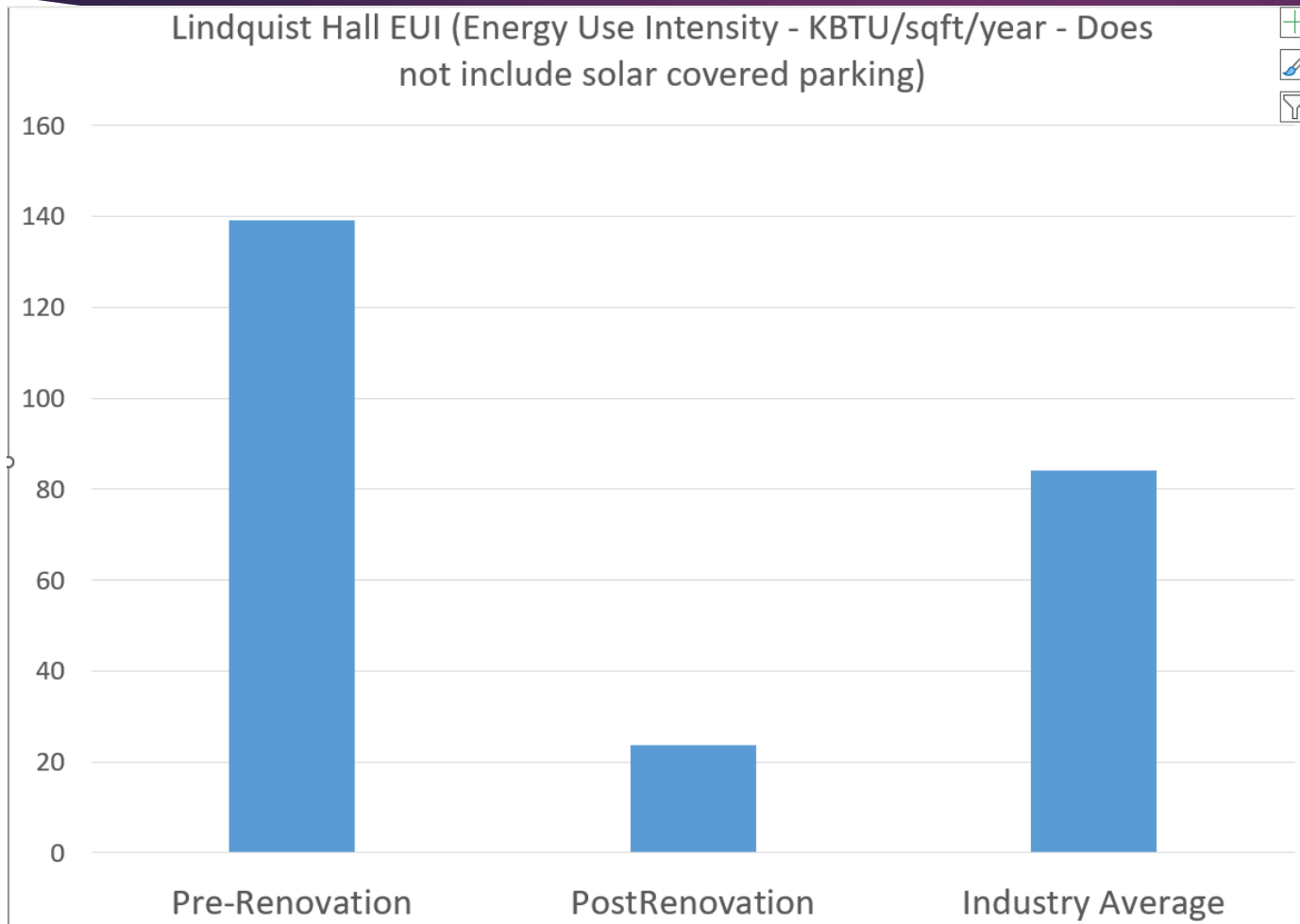
Funds Request

- ▶ WSU is requesting formula funds that have already been allocated.
- ▶ WSU current dedicated funds balance is a little over \$12 million.
- ▶ The Allied Health CBE is currently a little over \$4 million
- ▶ The Student Services CBE is currently at just over \$8 million with agency funds of \$2.5 million.

Space Utilization

- ▶ Weber State is not requesting any additional sqft. We are solving space needs by optimizing existing space.
- ▶ Convert classrooms to labs
- ▶ Work with departments and faculty to use 110 classrooms in nearby facilities with lower utilization.

Building performance



- ▶ WSU has a strong record for high performing buildings
- ▶ This would update buildings to meet DFCM high performance building standards.
- ▶ Projects are need to keep WSU on track to meet energy, climate and air quality objectives.

Student Success

- ▶ Update of building programming to create academic success center.
- ▶ Focus on creating academic support for all WSU students.

