



**Mountainland Technical College**  
**Payson Campus Update**  
*<https://mtec.edu/payson>*

**Kirt Michaelis, Vice President**  
**March 27, 2025**

# A True Community Project

- Economic & Population Expansion
- City Partnership
- 13-Acre Donation (\$7M)
- #1 USHE Priority
- #1 IGG Priority
- \$43 Million Funded in 2022

## THANK YOU

Our Payson Campus project is brought to you by...



**PAYSON**  
UTAH  
HOME TO ADVENTURE



*Payson South  
Meadows  
Partners*

*Lieutenant Governor Deidre Henderson*

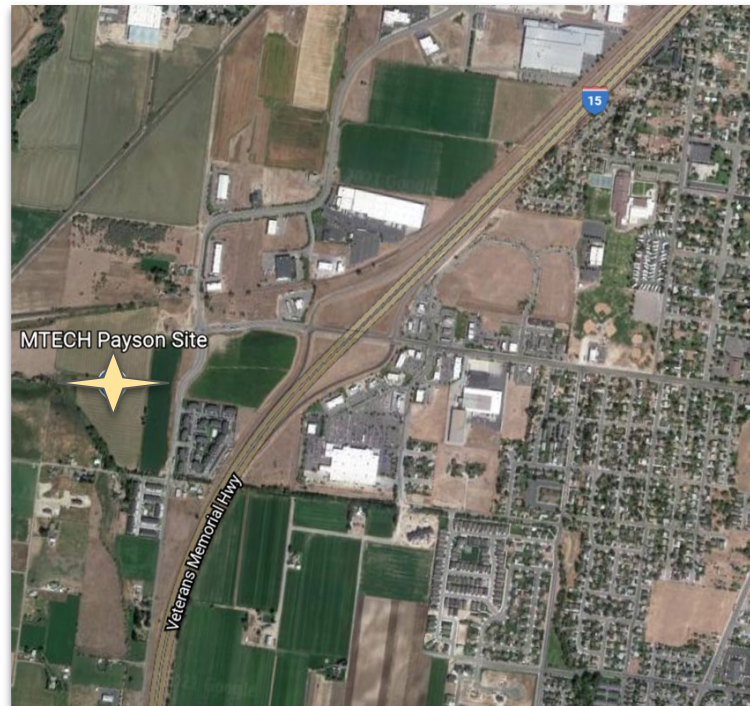
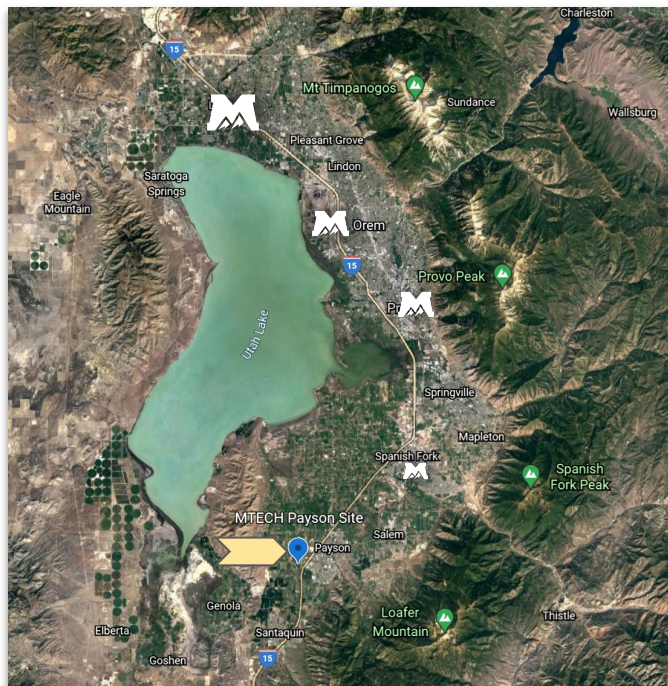
*Senator Mike McKell*

*Representative Doug Welton*

*Payson Mayor Bill Wright*



# MTECH Locations in Utah County



# Groundbreaking

- One-Year Moratorium on all DFCM Projects
- Groundbreaking on September 1, 2023
- 90,800 Sq.Ft. Comprehensive Campus
- Flagship Tenant on Economic Development Site



# A Campus On The Rise

## Accessibility

- Space Can Accommodate Annual Enrollment of over 1,100
- New Public Transportation Options Arriving Soon
- MTECH Hallmark: Localized Services

## Economic Development

- 2,100 Open Jobs in Payson Area related to MTECH Programs
- Double-Digit Growth Projections Across all Employment Sectors
- \$115 million, annually, into the local economy



## Affordability

- Land Donation of \$7 million
- Economical, Program-Focused Construction
- Equipment Donations from Corporate Sponsors

\* Sources:

JobsEQ: <http://chmuraecon.com/jobseq>

ONET Online: <https://www.onetonline.org/>

DWS: <https://jobs.utah.gov/wi/index.html>



# Save The Date



## Payson Campus Ribbon Cutting

**August 28, 2025 @ 10:30am**

*Formal Invitations to Come*

To learn more, please visit:

<https://mtec.edu/payson>





**MOUNTAINLAND**  
TECHNICAL COLLEGE