

11TH GRADE



[College Guide
- English](#)



[College Guide
- Spanish](#)



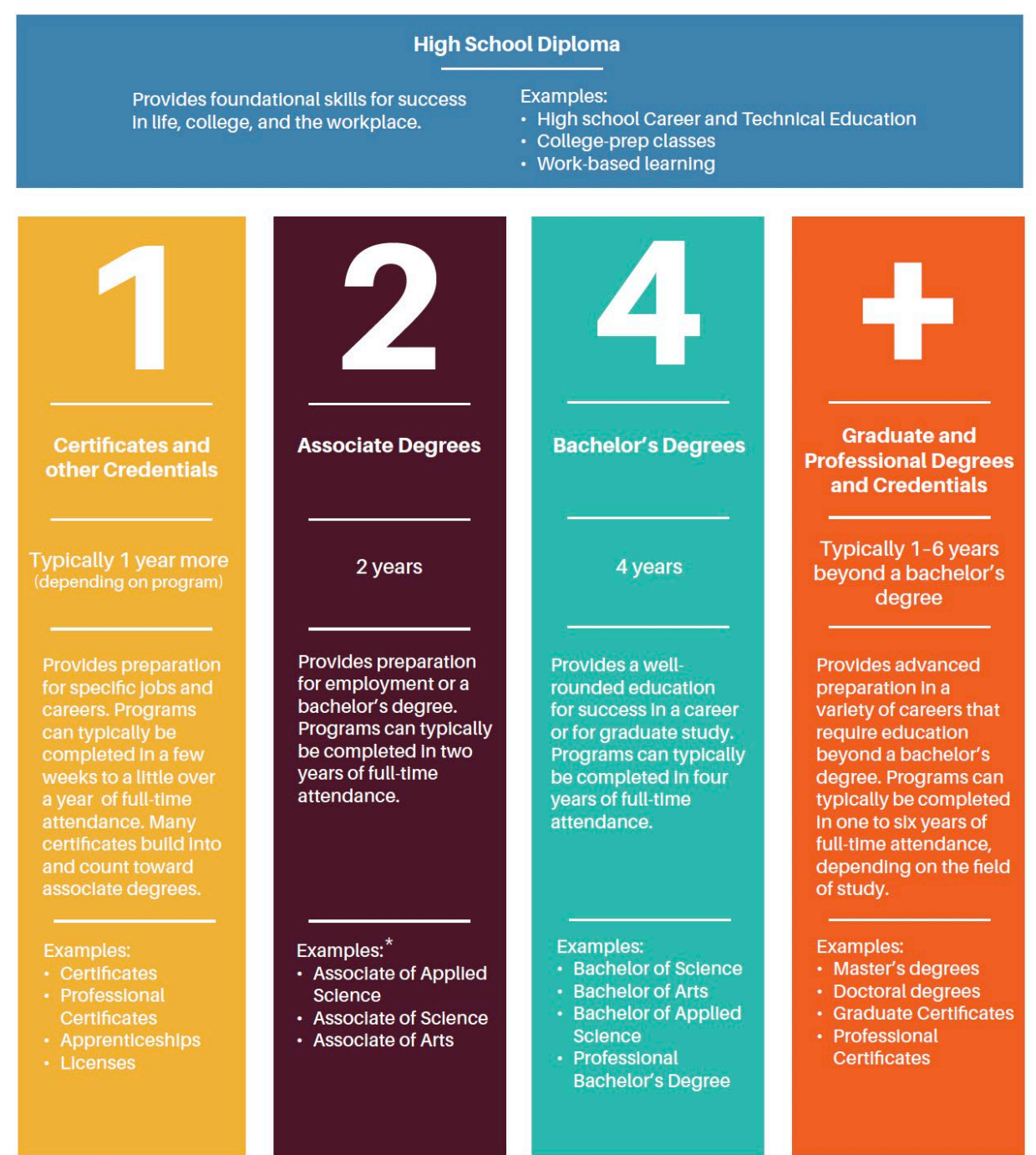
[Facts-at-a-
Glance](#)



[My Next Move
Interest Profiler
Activity](#)

What is college?

- Any postsecondary education (after high school)
- Technical college
- Community college
- University
- Types:
 - Certificates, licenses and other credentials
 - Associate degrees
 - Bachelor's degrees
 - Graduate and professional degrees



Facts-at-a-Glance

2024-2025 FACTS-AT-A-GLANCE



Institution	Application Fee	2024-2025 Tuition & Fees	Admissions Requirements	Certificates & Degrees Available	Fall Admissions Deadline	Scholarship Application Deadline	Financial Aid Deadline	1-year Avg. On-Campus Housing & Meal Plan
Bridgerland Tech College	Application fee: \$0 Enrollment fee: \$0	\$95/credit + fees (vary by program)	HS diploma, GED or recognized equivalent btech.edu/students/enrollment	Certificates	Year-round	Year-round	For Pell Grants, by the last date of eligible enrollment or June 30	N/A
Brigham Young University	\$35	Church member: \$6,688 Non-member: \$13,376	Letters of recommendation, ecclesiastical endorsement, essays, GPA, HS or college transcripts. ACT/SAT optional. enrollment.byu.edu/applying	Bachelor's Master's Doctorate	Priority: Nov. 1, 2024 Final: Dec. 16, 2024	Dec. 16, 2024	For need-based scholarships Jan. 20, 2025	Housing: \$5150 Meal Plan: \$5,250
BYU-Pathway	\$0	Church member: \$83/credit Non-member: \$104/credit	Does NOT require a HS diploma or GED equivalent, if over 18 years old byupathway.org/admissions	Certificates Associate's Bachelor's	Year-round	Year-round	Year-round	N/A
Davis Tech College	HS student annual fee: \$40 Adult application fee: \$0 Enrollment fee: \$0	\$95/credit + fees (vary by program)	Varies by program: davistech.edu/programs	Certificates	Year-round	Continuing after HS graduation: April 1, 2025 All others: Year-round	Year-round	N/A
Dixie Tech College	Application fee: \$0 Enrollment fee: \$0	\$105/credit + fees (vary by program)	Standardized testing, background checks, immunizations, etc., depends on program requirements dixietech.edu/apply	Certificates	Year-round	Year-round	Varies by program	N/A
Ensign College	\$0	Church member: \$34,004 Non-member: \$8,088	Domestic students: ecclesiastical endorsement & HS diploma or GED equivalent, essay ensign.edu/how-to-apply	Certificates Applied Associate's Associate's Bachelor's	Sept. 1, 2025	Year-round	Year-round	N/A
Mountainland Tech College	Application fee: \$0 Enrollment fee: \$40	\$120/credit + fees (vary by program)	Does NOT require a HS diploma or GED equivalent <i>unless</i> applying for federal, state or scholarship aid mtec.edu/admissions	Certificates	Year-round	Year-round	Year-round	N/A
Ogden-Weber Tech College	Application fee: \$0 Enrollment fee: \$45	\$95/credit + fees (vary by program)	Does NOT require a HS diploma or GED equivalent. Complete required testing per program otech.edu/how-to-enroll	Certificates	Year-round	Year-round	Year-round	N/A
Salt Lake Community College	\$0	Resident: \$4,426 Non-resident: \$14,243.50	Some programs may require a HS diploma or GED slcc.edu/admissions	Certificates Applied Associate's Associate's	Aug. 15, 2024	Feb. 1, 2024	None	N/A
Salt Lake Tech College (SLCC)	\$0	\$99/credit + fees (vary by program)	Some programs may require a HS diploma or GED slcc.edu/sltech/admissions.aspx	Certificates	Aug. 15, 2024	Year-round	Year-round	N/A
Snow College	\$0	Resident: \$4,338 Non-resident: \$14,288	HS diploma or GED equivalent snow.edu/admissions/apply.html	Certificates Applied Associate's Associate's Bachelor's	Must be admitted by 1st day of class.	Mar. 1, 2025	June 1, 2025	Housing: \$2,340 Meal Plan: \$2,655
Southern Utah University	\$0	Resident: \$6,962 Non-resident: \$21,192	2.7 GPA = General Acceptance 2.3 GPA = Provisional Acceptance/Review Committee suu.edu/apply	Certificates Applied Associate's Associate's Bachelor's	Aug. 28, 2024	Resident: Mar. 1, 2025 Non-Resident: 1st day of Fall	May 1, 2025	Housing: \$4,181 Meal Plan: \$2,794

Information is subject to change. Public colleges and universities do not charge for an application fee. For specific questions, please contact the institution's admissions office directly.

Where should I start?

- Exploring interests can help you consider types of careers and work environments that fit your personality.
 - What do you like to do?
 - What you are good at?
- Take an [Interest Profiler](#) to match with careers that align with your interests.
 - Consider things like college majors, wages, or salary to help you reach your career goals.
 - How much education, training, and/or certifications will you need in the future?
 - How much time do you want to invest vs. how much education would you like to get?

Participate in college awareness activities

Summer

- [Enter in activities specific to grade level]

Fall

- [Enter in activities specific to grade level]

Spring

- Junior College Day aka Utah Higher Education Day
- Take the ACT
- [Enter in activities specific to grade level]

Explore your interests

- Explore careers through assessments like the *Interest Profiler* on [Keys to Success](#) or [MyNext Move](#).

The screenshot shows the 'Interest Profiler' assessment interface. At the top, there is a navigation bar with links for 'Career Plan', 'Self-Surveys', 'Resume', 'Careers', 'Education', and 'My Dashboard'. The 'Self-Surveys' link is highlighted. Below the navigation bar, the title 'Interest Profiler' is displayed in a red-bordered box, with a 'Restore' button to its right. The main content area contains an introductory paragraph: 'The Interest Profiler helps you identify your interests and how they relate to careers you may want to explore. Connecting interests to careers is one way to find a career you will enjoy!'. To the right of this text are 'Instructions' and 'Options' sections. The 'Instructions' section lists: 'Time to complete: about 5 to 10 minutes', 'Number of items: 60', 'Each statement describes different activities related to careers', and 'Rate how much you like or dislike the activity'. The 'Options' section shows five response choices represented by smiley faces: 'Strongly Like', 'Like', 'Unsure', 'Dislike', and 'Strongly Dislike'. A red 'Start' button is located at the bottom right of the response choices.

The screenshot shows the 'O*NET Interest Profiler' assessment interface. At the top, there is a navigation bar with links for 'Back', 'Start', 'Interests', 'Results', 'Job Zones', and 'Careers'. The 'Interests' link is highlighted. The main content area displays a list of 12 activities, each with a row of five colored circles representing response choices. The activities are: 13. Repair household appliances (green), 14. Raise fish in a fish hatchery (green), 15. Conduct chemical experiments (pink), 16. Study the movement of planets (pink), 17. Compose or arrange music (yellow), 18. Draw pictures (yellow), 19. Give career guidance to people (purple), 20. Perform rehabilitation therapy (purple), 21. Operate a beauty salon or barber shop (orange), 22. Manage a department within a large company (orange), 23. Install software across computers on a large network (blue), and 24. Operate a calculator (blue). A progress bar at the top right indicates 'Page 2 of 5' and '12 of 60 questions'. A 'Start' button is located at the bottom left of the interface.

Interest profiler and holland codes

- Holland code is a system that classifies jobs into categories, interest clusters, and compatible work environments.
- [Insert own text]



Research potential certificates or degrees

- Use the [Utah Programs and Majors Guide](#) to explore programs and majors.
- [Insert own text]

Exploratory Tracks

An exploratory track is a collection of related technical or academic programs that give students the opportunity to become acquainted with potential careers or programs that align with their interests.

Artistic - Creators

Artistic personality types tend to be innovative and original. They enjoy expressing themselves and/or ideas through the arts, including drama, visual art, music, and writing. They generally prefer unstructured work where they can use their aesthetic capabilities imaginatively, and normally favor working with ideas and people as opposed to data or things.

People who are Artistic types tend to be intuitive, original, expressive, innovative, idealistic, non-conforming, inventive, and imaginative. Strongly Artistic persons are often talented in one or more of the following areas: music, design, sketching, drawing, painting, sculpting, acting, interpretive reading, writing, and dancing.

Recommended Quantitative Literacy Math Course for academic programs: MATH 1030

Audio/Visual Technology
Communication
Performing Arts & Music
Studio & Fine Arts
Visual Arts

Conventional - Organizers

Conventional personality types tend to prefer structured activities, often working with details involving words and/or numbers, and valuing concrete tasks and planning. They generally prefer working with data more than with ideas, people, or things.

A person who is a Conventional type tends to be stable, methodical, controlled, cooperative, orderly, and conscientious. Strongly Conventional persons often have strong organizational and filing skills. They can usually be relied upon to follow through on plans, and they tend to thrive in computerized environments.

Recommended Quantitative Literacy Math Course for academic programs: MATH 1050

Business Management & Administration
Finance, Accounting, & Banking
Professional Support Services

Enterprising - Persuaders

Enterprising personality types tend to enjoy competitive environments, leadership, and adventure. They value ambition and setting their own agenda, and generally prefer working with people and data over ideas and things.

A person who is an Enterprising type tends to take risks and be energetic, sociable, and assertive. Strongly Enterprising persons are often able to lead, influence, oversee, and organize others, thus they are attracted to the following positions: manager, producer, marketing specialist, entrepreneur, buyer, government official, and salesperson.

Recommended Quantitative Literacy Math Course for academic programs: MATH 1040

Investigative - Thinkers

Investigative personality types tend to be analytical, intellectual, and explorative. They often have a broad range of interests, and enjoy abstract thinking, solving problems, and investigating new ideas, often related to the physical, biological, or cultural world. They normally prefer to work with ideas and things, rather than with people or data.

A person who is an Investigative type tends to be reserved, independent, scholarly, logical, and curious. Strongly Investigative persons usually enjoy working independently (observing, investigating, solving problems) often, though not always, in a scientific-related area.

Recommended Quantitative Literacy Math Course for academic programs: MATH 1050

Align advanced courses and CTE pathways with college plans

- Make plans to take an advanced math class during senior year.
- Ask a school counselor about how to earn college credit through concurrent enrollment and advanced placement courses.
- Ask a CTE Coordinator about dual enrolling in a technical college to earn college credits.
- [Insert own text]

Plan to earn college credit while in high school

- Concurrent enrollment courses (CE)
- Dual enrollment at a technical college
- Advanced Placement (AP)
- International Baccalaureate (IB)

EARN COLLEGE CREDIT WHILE IN HIGH SCHOOL

There are four ways to earn college credit in high school. This is a great way to get a head start on your college education, plus it'll save you time and money. Talk with your counselor to see which classes your high school offers.

When earning college credit in high school, talk with your counselor to make sure you're earning credit that counts for either general education or toward your certificate or program at the college you plan to attend.

	What is it?	Where is it available?	College credit earned through:	Cost: [*] <small>*based on costs for the 2023-24 school year; costs may vary by high school</small>	What college credit will I earn?
TECHNICAL EDUCATION	Students enroll in a local tech college during high school or receive credit toward a certificate for courses completed in high school.	Available for most high schools, usually at local technical college.	Passing the class	Tuition free Course fees are applicable Possible book and material costs	Classes count toward the technical college certificate program. Some certificates transfer to other Utah colleges.
CONCURRENT ENROLLMENT (CE)	CE classes earn high school and college credit at the same time.	Available at most Utah high schools	Passing the class	\$15-20 per class (\$5 per credit) Possible book costs	Many CE classes fulfill general education requirements. CE also offers intro classes in college-level career and technical education.
ADVANCED PLACEMENT (AP)	AP classes are writing- and research-intensive and emphasize study and test-taking skills.	Available at most Utah high schools	Exam score	\$98 per exam Possible book costs	Check with your college's academic adviser.
INTERNATIONAL BACCALAUREATE (IB)	IB classes are writing- and research-intensive. IB students also perform community service and write an extended essay.	Only offered at certain Utah high schools	Exam score	\$123 per exam Possible book costs	Check with your college's academic adviser.

Concurrent Enrollment

- Often referred to as CE.
- These classes earn high school and college credits simultaneously. Students take the courses at their high school campus.
- Students earn college credit by passing the class.
- Students start building a college transcript.
- Students' GPAs and grades follow them to college.
- Tuition is reduced to \$5 per credit.
 - Example: ENGL 1010 is three credits = \$15.
- Most classes count toward general education.

Technical Education

- Often referred to as dual enrollment or CTE.
- Like career and technical education classes, students enroll in the local technical college while in high school and earn college credit.
 - Example: I live in Logan City, and the closest technical college is Bridgerland Technical College.
- Tuition is free for high school students.
- There are potential course fees and textbook costs.
 - Example: I am enrolled in the cosmetology program, and the class requires tools and supplies to practice.
- Classes count towards a program certificate and can lead into a degree.

Advanced Placement

- Often referred to as AP.
- Classes are writing and research-intensive to emphasize study and test-taking skills.
- Classes are taken in high school and earning college credit depends on your exam score.
- The cost per AP exam is typically \$98.
- College credits vary, check with your college academic adviser.

International Baccalaureate

- Often referred to as IB.
- Classes are only offered at certain high schools.
- Classes are taken in high school and earned college credit depends on your exam score.
- The cost per IB exam is typically \$123.
- College credits vary, check with your college academic adviser.

Take the ACT

- Take the ACT at your school for free.
 - [Enter date of exam]
 - [Enter location of exam]
 - [Enter other details here]
- ACT scores are necessary to apply for some scholarships.
- Remember, some colleges and universities are test-optional, meaning students have the option to take entrance exams to benefit them for scholarships or admissions.
- [Insert own text]

Utah College Awareness Week

- Participate in activities to help you explore college and university options. We want you to have an idea of where to apply your senior year.
- [Enter mm/dd/yyyy and hh:mm]
- [Enter in website you use for UCAW]
- [Enter what you want students to come prepared with]



Utah Higher Education Day

Did You Know?

This event is also known as:

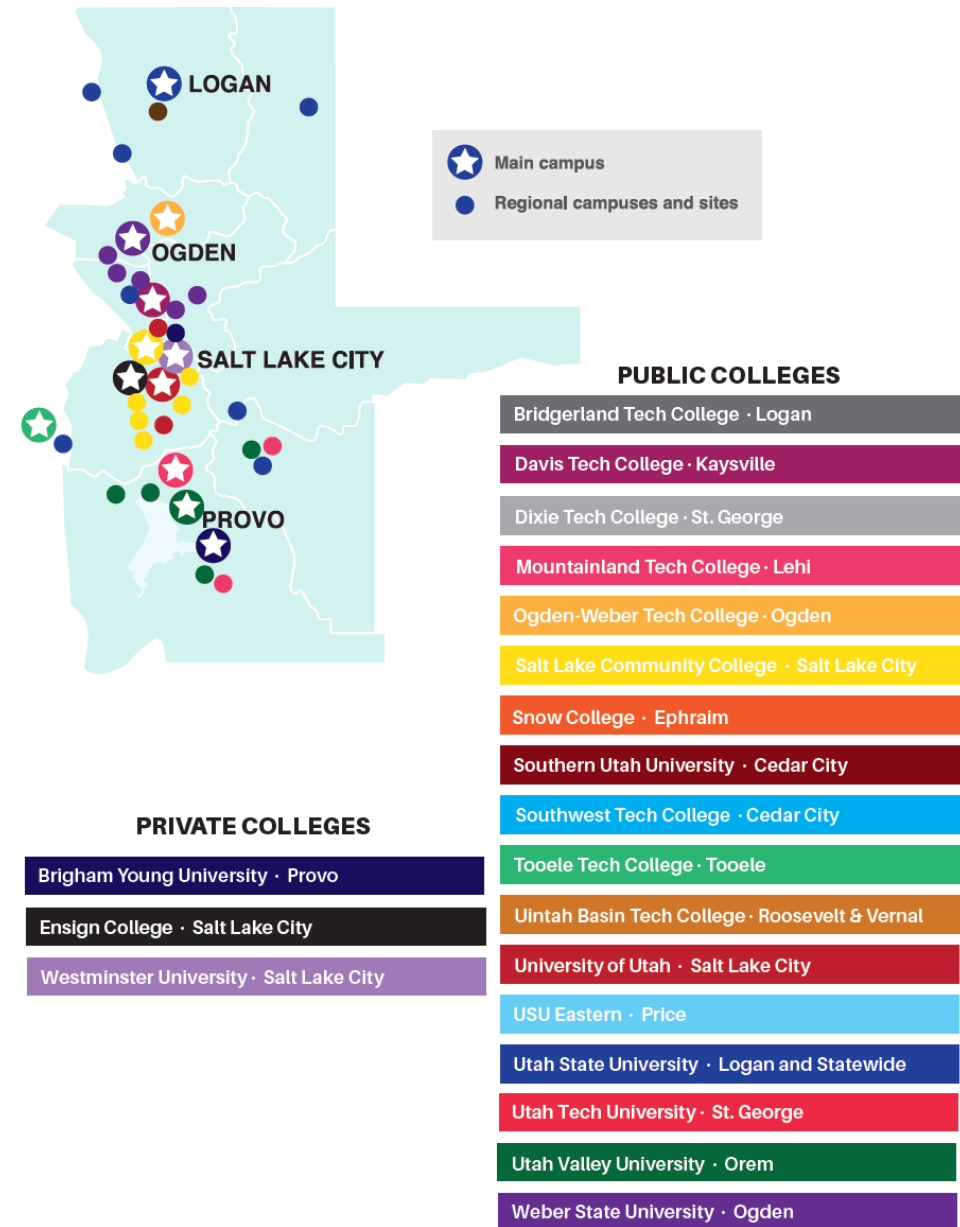
- Junior Tour
- College Day

- The purpose of this annual event is to bring Utah institutions and a few out-of-state partners together for one day at each high school to speak with juniors about post-secondary options
- You will learn about application deadlines, majors, programs, scholarships, and more
- You will attend three admissions presentations from institutions of your choice
- [Enter mm/dd/yyyy and hh:mm]
- [Enter in website you use forUCAW]
- [Enter what you want students to come prepared with]



Utah colleges and universities

- You can decide to stay close to home or move away to college.
- Tip! Use [Google Maps](#) to calculate the distance from home.
- [Insert own text]



Technical colleges

- Regionally based
- Certificates are reviewed to align with industry demand
- Rolling admissions
 - Weekly start dates for specific programs
 - Admissions requirements vary
- No application fee
- Tuition is free for Utah high school students
- Fees and course supplies may apply
 - Summer Bridge scholarships
 - After high school, ~\$85-120 tuition per program credit



Degree-granting institutions

- Semester-based with a specific start date
- Common admissions requirement is a high school diploma or equivalent i.e., GED
- No application fee in Utah
- Six of the eight degree-granting institutions are open enrollment. (Those above the yellow line)
- Private colleges also participate in UCAW, (Westminster University, Brigham Young University, and Ensign College)

Community Colleges



Regional Universities



Research Universities



* Most degree-granting institutions also offer technical education programs

Type of colleges

- Technical colleges
 - Offer certificate programs to qualify students to work in various occupational fields. They cost less and offer transferable credits to a community college or university.
- Community colleges
 - Offer certificates and associate degrees. They are lower in cost and offer credits to transfer to a university.
- Regional universities
 - Offer associate, bachelor's, and master's degrees. They may offer career and technical education programs as well.
- Research universities
 - These universities offer programs similar to those of other types of universities and colleges, as well as master's and doctorate degrees. They focus on developing research in specialized fields.

Questions for your college list

- How big is the campus?
- Do they have major(s) to help me reach my career goals?
- What are these majors or programs?
- What are on- and off-campus housing options? Is commuting an option?
- Compare financial aid packages:
 - How much does the college offer?
 - Are some scholarships awarded renewable year after year?
 - Will I need to apply annually for scholarships and financial aid?
- What is the tuition cost, and are there scholarships I can apply for to help reduce out-of-pocket expenses?
- [Insert own text]

Apply for scholarships

- Read about the various ways to pay for college including scholarships, grants, and work-study.
- Start to build a list of scholarships you could apply for, and maybe find ones you can apply for early.
 - my529 Book Your Summer: bookyoursummer.com
 - my529 Make You Mark: my529.org/scholarship-opportunities-available-for-utah-students/
- Create profiles on trustworthy scholarship search websites:
 - USHE.edu/state-scholarships-aid
 - KTSutah.org
 - Myscholly.com
 - Bigfuture.collegeboard.org/scholarship-search
 - Unigo.com
 - Goingmerry.com
- [Insert own text]



Resources for presentations

- [Utah College Guide](#)
- [Facts-at-a-Glance Handout](#)
- [Utah Programs and Majors Guide](#)
- [Concurrent Enrollment Resources](#)
- [Utah College Disability Resource Center Handout](#)
- [Senior Year Timeline to College Readiness Handout](#)
- [I Applied. What's Next Handout](#)
- [Apply for Scholarships Handout](#)
- [StudentAid.Gov Setup Handout](#)
- [Paying for College Toolkit](#)
- [Preparing for College Toolkit](#)

Questions

[Insert Presenter Contact Information]