

ENSIGN COLLEGE

Admissions Guide



2021-2022

A photograph of three young women with long dark hair, smiling and posing together on a sidewalk. The woman on the left wears a white sweater and glasses. The woman in the middle wears a black top and a necklace. The woman on the right wears a green and white striped sweater. In the background is a large, historic brick building with a prominent tower and a sign that says "PACIFIC".

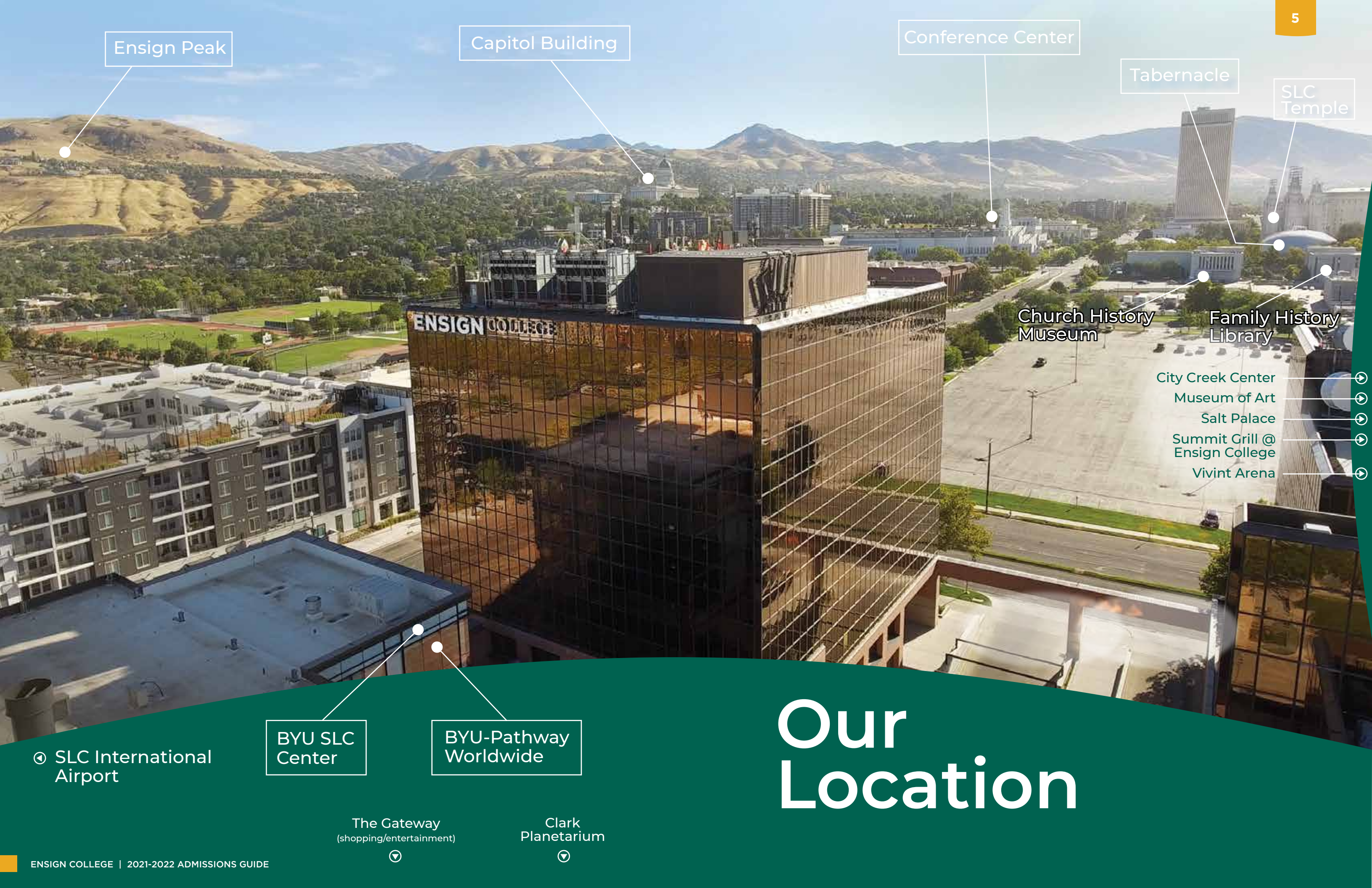
Ensign College is developing capable and trusted disciples of Jesus Christ.

Our students are equipped with practical power as they develop:

Market-Ready Skills
Character
Confidence
Competence

The College is named after Ensign Peak. On July 26, 1847, two days after arriving in the Salt Lake Valley, Brigham Young and several other men hiked to the top of a mountain he had seen in vision prior to beginning the trek west. From their vantage point, one thousand feet above the valley floor, Brigham Young described his vision and the men “began to lay plans for the future city.” That spot, Ensign Peak, rises just north of where the College is located. It was given that name because it was a symbol of the “spirit of international outreach and the ancient promise that here one could learn the ways of God.” Throughout its history, Ensign College, now located in the shadow of Ensign Peak, has provided such an environment.

For more info, visit:
ensign.edu/about.



Ensign Peak

Capitol Building

Conference Center

Tabernacle

SLC Temple

Church History Museum

Family History Library

City Creek Center

Museum of Art

Salt Palace

Summit Grill @ Ensign College

Vivint Arena

SLC International Airport

BYU SLC Center

BYU-Pathway Worldwide

The Gateway (shopping/entertainment)

Clark Planetarium

Our Location

ABOUT US

Ensign College provides a comprehensive education in an atmosphere consistent with the ideals and principles of The Church of Jesus Christ of Latter-day Saints. This atmosphere is created and preserved through commitment to Church ideals and principles by our students, staff, faculty, and administration.

Located in downtown Salt Lake City, just two blocks west of Temple Square, the campus provides students with many opportunities to connect with the local community through shopping, concerts, sports, and many other activities.

Thanks to small class sizes (21:1 student-to-teacher ratio), students can form friendships throughout their time at the College.

Free UTA passes allow enrolled students to commute to campus through Bus, Trax, or the Frontrunner.

Each year 2,200 students come to Ensign College.

2021 Graduate Profile

438
Graduates



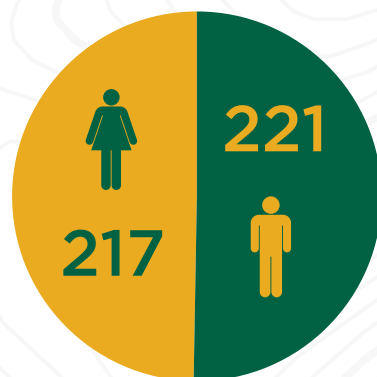
457

two-year degrees
in 20 programs



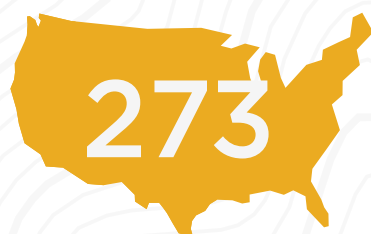
316

certificates
awarded



140

Returned
Missionaries
(32%)



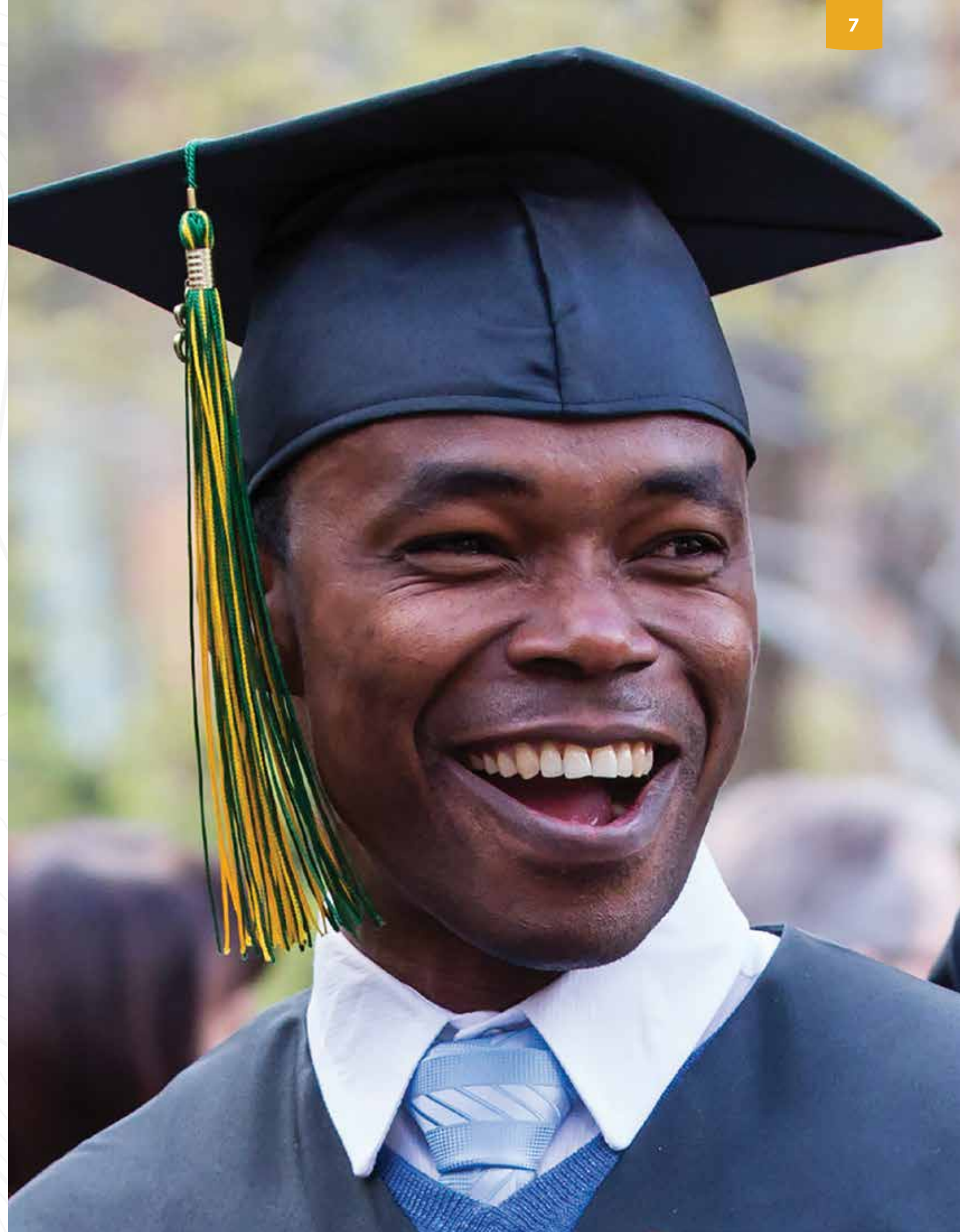
of graduates are
from the U.S. (62%)

38%



International Students
(from 35 countries)

Graduates join an Alumni
Association comprised of
100,000+
former students.





What We Offer

CERTIFICATES

One- or two-semester, 15-19 credit programs designed to teach new skills so students become better qualified for specific jobs.

- Accounting
- Business Analytics
- Business Intelligence Core
- Business Language
- Cloud & System Administration
- Communication Core
- Communication Fundamentals
- Computer Science
- Cybersecurity Core
- Digital Content Creation
- Digital Marketing
- Global Supply Chain & Operations
- Hospitality & Tourism Management
- Human Resource Management
- Interior Design
- IT Fundamentals
- Medical Assisting
- Medical Billing & Coding

- Network Engineering Core
- Paralegal Studies
- Professional Business Management
- Professional Sales
- Programming Fundamentals
- Project Management
- Small Business Management & Entrepreneurship
- Social Media Marketing
- Software Engineering
- Technical Support Engineer
- Technology Account Management

ASSOCIATE OF SCIENCE DEGREE (AS)

Complete general education requirements and learn specific, employable skills by completing a certificate. Students who plan to continue their education should choose this option. 100% transferable.

ASSOCIATE OF APPLIED SCIENCE DEGREE (AAS)

Choose from skills-based, non-transferable degrees with set curriculums (no certificates). Designed to prepare you for an entry-level position in that specific field, with no further education required to succeed.

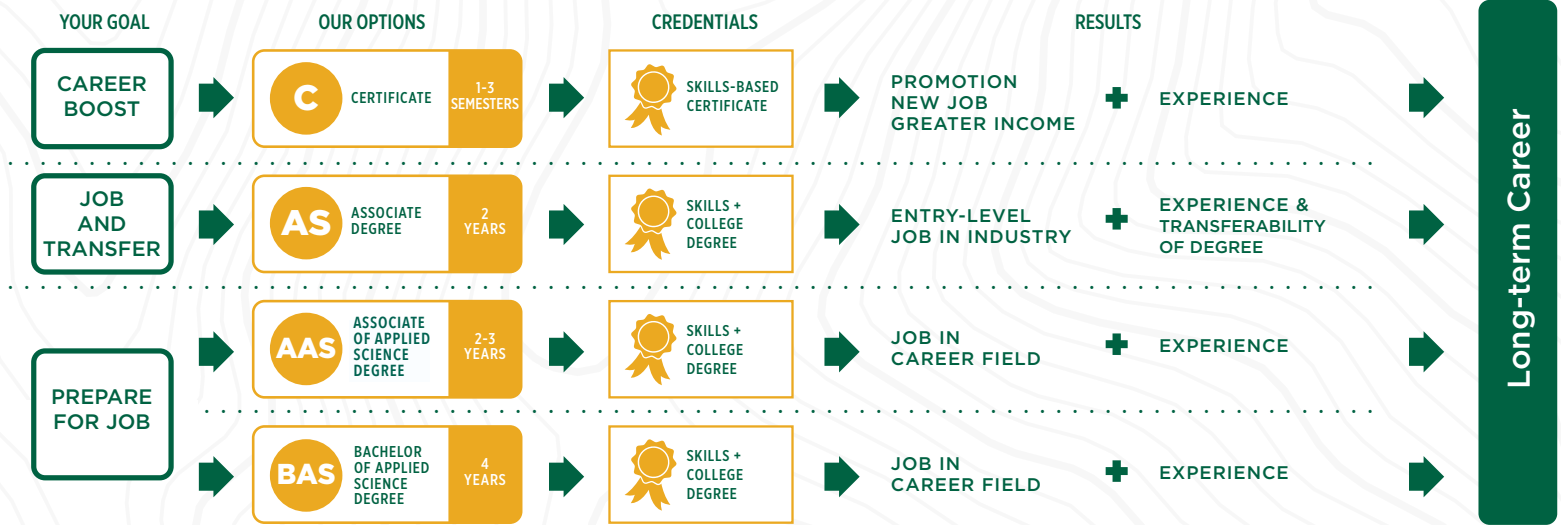
- Applied Technology
 - Business Intelligence
 - Business Management
 - Communication
 - Cybersecurity
 - Information Technology
- Interior Design
 - Network Engineering
 - Paralegal Studies
 - Social Media Marketing
 - Software Development

BACHELOR OF APPLIED SCIENCE DEGREE (BAS)

4-year degree that emphasizes specialized skills over general education, so you'll graduate ready to advance quickly in your career.

- Accounting – Bachelor of Applied Science in Business Management
- Business Management - Bachelor of Applied Science
- Communication – Bachelor of Applied Science
- Cybersecurity – Bachelor of Applied Science in Information Technology
- Digital Marketing – Bachelor of Applied Science in Communication

ensign.edu/degrees-certificates



Teaching & Learning

What is so different about the experience you'll have at Ensign College? You'll be immersed in learning environments where you'll act as agents of your own learning. As you learn in Spirit-centered classrooms, you'll be invited to study and learn by faith as you seek the gifts of the Spirit to change and become responsible for your learning, *developing as a capable and trusted disciple of Jesus Christ*.

As a learner at Ensign College, you will—

- Prepare** to develop and demonstrate professional capabilities.
- Act** as an agent of your learning in an immersive learning environment, resulting in Deep Learning—to know, do, and become.
- Demonstrate** how your journey to become a capable and trusted disciple of Jesus Christ has changed and shaped you to embrace future opportunities with confidence, resiliency, and faith.

President Bruce C. Kusch has said, “This campus-wide initiative helps students to discover how to learn more deeply. One pattern for deep learning, called subject matter immersion (SMI), creates an environment in which **the student is immersed, covered and surrounded by the course content rather than merely being presented with it by the instructor**. Assignments revolve around **real-life challenges**, including tasks they will face in the workplace. Students are responsible for defining how they demonstrate subject mastery, thus **improving their leadership and problem-solving capabilities.**”



A recent Forbes article

reports the skills that employers say new college grads do not have:

- ▶ Leadership
- ▶ Professionalism
- ▶ Agility
- ▶ Problem-solving
- ▶ Written Skills
- ▶ Verbal Skills
- ▶ Collaboration
- ▶ Teamwork

96% of college administrators think they are doing an adequate job of preparing graduates

11% of business leaders think students are prepared

“Why don’t we make college more like the world of work?”

- PRESIDENT BRUCE C. KUSCH





What We Cost

To embrace and support each individual’s unique talents and circumstances, Ensign College provides a variety of scholarship offerings for students.

Visit our scholarship website to review and apply for our offerings: ensign.edu/scholarships

For federal financial aid availability, fill out the FAFSA form: studentaid.gov

Questions?
finaid@ensign.edu
(801) 524-8111

74%

of first-time, full-time Ensign College students receive state, Federal or institutional financial aid (from IPEDS data).

The following chart illustrates cost of tuition and average cost of living while attending for one semester for full-time students (12-18 credits) during the 2021-2022 school year.

One Semester	Living Off Campus	Living with Parents
Church Member Tuition	\$ 1,828	\$ 1,828
Non-Church Member Tuition	\$ 3,656	\$ 3,656
Books & Supplies	\$ 100	\$ 100
Room & Board	\$ 3,143	\$ 1,622
Transportation	\$ 1,364	\$ 1,364
Personal Expenses	\$ 710	\$ 710
Loan Fees	\$ 25	\$ 25
Church Member Total	\$ 7,170	\$ 5,649
Non-Church Member Total	\$ 8,998	\$ 7,477

If you are taking 1-11 credits, the **cost per credit** is **\$153** for church member students, and **\$306 per credit** for non-church member students.

How to Apply

Ensign College uses a holistic review process, which means all parts of the application are considered. Here's what you need to apply:

- Equivalency of high school graduation/completion or completion of at least 24 semester credits of college work.
- Ecclesiastical Endorsement
- Essay
- One-time \$35 application fee

ensign.edu/how-to-apply

admissions@ensign.edu | (801) 524-8145

ADMISSIONS DEADLINES

2021 Fall Semester
(September 13 – December 15)
International: August 1, 2021
Domestic: September 1, 2021

2022 Winter Semester
(January 5 – April 7)
International: November 15, 2021
Domestic: December 15, 2021

2022 Spring Semester
(April 18 – July 20)
International: March 1, 2022
Domestic: April 1, 2022

2022 Fall Semester
(September – December)
International: August 1, 2022
Domestic: September 1, 2022

If an application deadline falls on a Saturday, Sunday, or holiday, the application will close the next business day. All deadlines are 11:59 p.m. (Mountain Time)

INTERNATIONAL STUDENTS

International students admitted to Ensign College need to have a valid passport, pay a deposit, and provide evidence of financial support before a Form I-20, "Certificate of Eligibility for Nonimmigrant (F-1) Student Status," can be issued.

The I-20 is necessary to pay the I-901 SEVIS fee, apply for a visa, and travel to the United States. Please visit our site for specific requirements and details.

ensign.edu/international

While studying in the United States, it is important to maintain your status. Please be mindful of the following requirements to stay in-status:

- Enroll in at least 12 credits per semester, 9 of which must be on campus
- Attend and pass your classes
- Comply with the terms and conditions as stated on the Form I-20

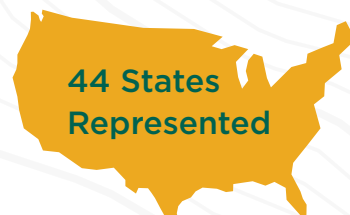
International Students are responsible to know the requirements, so please keep in touch with the International Student Office.

international@ensign.edu

(801) 524-8142



**66 Countries
Represented**



**44 States
Represented**

91%
Acceptance Rate



Support Services

Ensign College's small size and dedicated staff allow us to deliver personalized student service. Here are a few of our student support services:

CAREER AND INTERNSHIP SERVICES

This team assists students with finding employment as they build careers. Alumni can also continue to receive help with job-related services after graduation.

careerservices@ensign.edu | (801) 524-1925

CASHIER'S OFFICE

Check your balance, make a payment, and get help with tuition, insurance, and more.

cashier@ensign.edu | (801) 524-8153

COUNSELING SERVICES

Short-term counseling services are available to provide students the tools they need for success.

ensign.edu/counseling-services | (801) 524-8151

DEVOTIONALS

Held nearly every Tuesday (during semesters) on Temple Square to help students develop spiritually while they continue their academic studies.

ensign.edu/devotionals

DISABILITY SERVICES

Ensign College provides reasonable academic accommodations for students who self-identify and provide documentation after being admitted.

disabilityservices@ensign.edu | (801) 524-8151

HOUSING

Ensign College does not own, operate, or control student housing facilities, but facilities are available through a variety of off-campus property owners.

studev05@ensign.edu | (801) 524-8180

LIBRARY

The Ensign College library provides access to many professional journals, books, and other online resources to students.

library@ensign.edu | (801) 524-8150

NEW STUDENT ORIENTATION

This orientation provides an opportunity for new students to connect with their program/major, make friends, and learn more about the College and its mission.

ensign.edu/orientation

STUDENT SUCCESS CENTER

This team provides individualized support for students as they work towards their future. The Center provides a wide array of support, including a dedicated advisor for each student. Additional services include student involvement, mentoring, and tutoring.

studentsuccesscenter@ensign.edu | (801) 524-8151

THE OUTPOST BOOKSTORE

The Outpost Bookstore provides access for students to purchase course material, college apparel, and various supplies and snacks.

ensign.edu/bookstore

THE SUMMIT GRILL

The Summit Grill is a restaurant that employs students and serves the Ensign College, BYU Salt Lake Center and BYU-Pathway Worldwide communities.

thesummitgrill.com | STaylor@ensign.edu
(801) 524-8183

ADMISSIONS OFFICE

admissions@ensign.edu | (801) 524-8145

FINANCIAL AID AND SCHOLARSHIPS

scholarships@ensign.edu | (801) 524-8111
finaid@ensign.edu

RECORDS AND REGISTRATION

regstaff@ensign.net | (801) 524-8140

COME VISIT US!

Personalized tours provide you the opportunity to connect with students and feel what it's like to be on campus. We offer in-person campus tours Monday through Friday, between 8 a.m. and 5 p.m. Feel free to drop by and request a tour or schedule one in advance.

ensign.edu/campus-tours | (801) 524-8145

CONTACT US

ensign.edu | (801) 524-8100



@ensigncollegeSLC



@ensignSLC

(Scan QR code above with your phone camera to link to our social media pages and other links.)

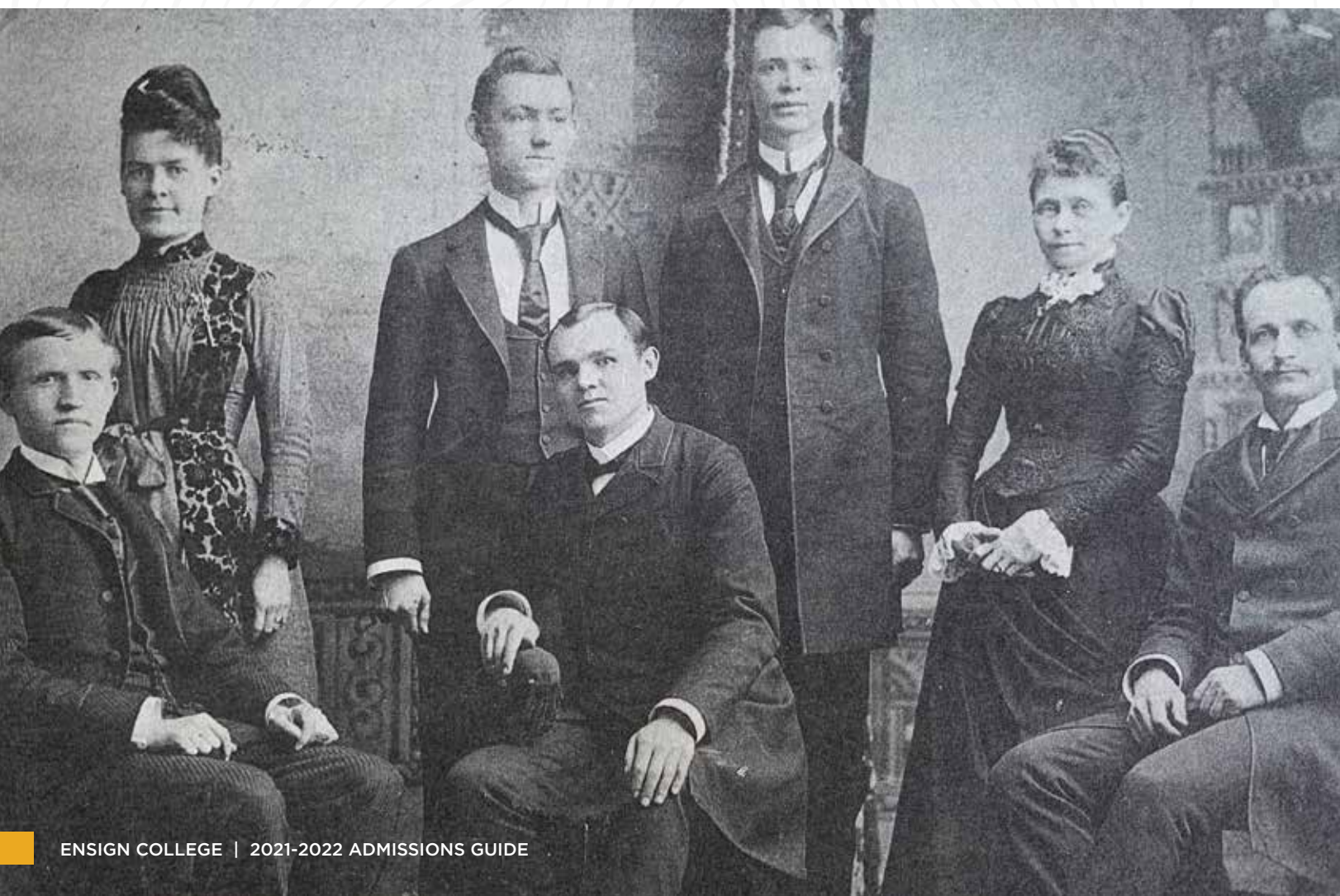


Our Story

In 1886, William B. Dougall gathered several local leaders from Salt Lake City together to make an important proposal: that the youth of Salt Lake City should have a school of their own.

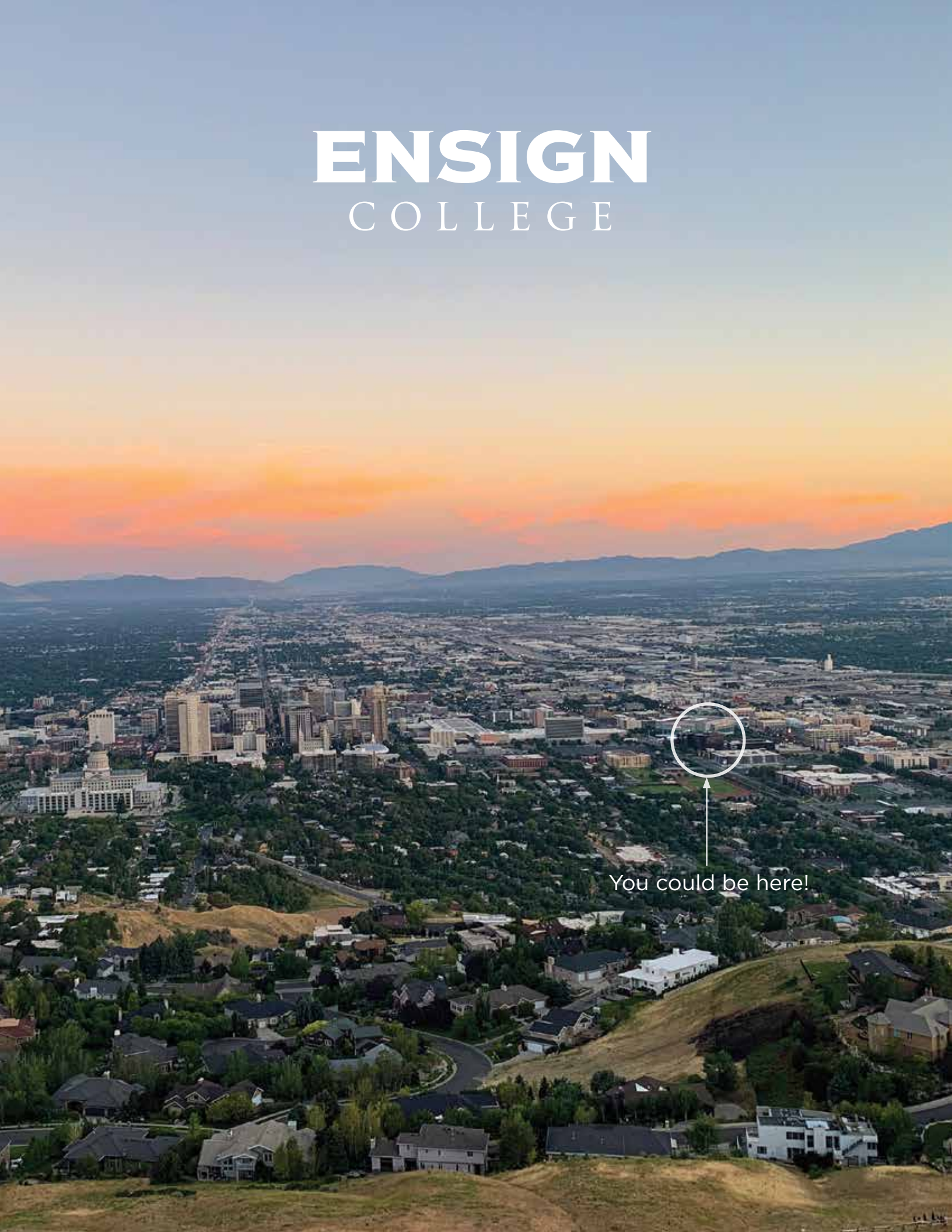
It was a meeting that almost didn't take place. The gathering was scheduled to occur in a bookstore owned by James Dwyer, but the night before the meeting, a fire broke out in the building. The next morning, water that had been used to put out the fire was still dripping from the destroyed roof. That could have been the end of Dougall's dream, but his group of determined, resourceful pioneers met anyway, sitting on boxes and crates in the charred, damp remains of the bookstore.

The symbolism of that meeting is extremely significant. Surrounded by the ashes of books, the gathered leaders made plans for a place of learning. The phoenix that rose from those ashes was the Salt Lake Stake Academy, now known as Ensign College.



ENSIGN

COLLEGE



You could be here!