



BOARD OF TRUSTEES MEETING

Executive Committee Special Meeting | AGENDA

BY CONFERENCE CALL

October 29, 2019 | 7:30 am – 8:00 am

Utah System of Technical Colleges
310 South Main St. #1250 | Salt Lake City, UT 84111
801-3410-6000

1. Welcome and Roll Call

Chair Steve Moore

ACTION AND DISCUSSION ITEMS:

PRESENTER:

2. Approval of FY 2019 UTech Annual Report

ITEM 2

Zachary Barrus

CLOSED SESSION:

The Executive Committee may elect to go into closed session, which will not be open to the public, pursuant to Utah Code Title 52, Chapter 4, Sections 204, 205 and 206.

ADJOURNMENT:

Public Notice of Electronic Meeting Access (UCA 52-4-207 (3): This meeting will be provided with electronic meeting access via conference/speaker telephone for Board of Trustees members only by prior arrangement with the Board secretary. Utah System of Technical Colleges shall be the anchor location for public attendance.



Utah System of Technical Colleges Annual Report

(October Release)

Commissioner's Message



The Utah System of Technical Colleges (UTech) exists to provide businesses with skilled employees able to quickly adapt to new and emerging technologies in a 21st century world. Through our occupational advisory committees, *every* program offered at a technical college is overseen by regional industry leaders ensuring that students who graduate have the skills needed by local employers *right now*. These industry partners' guidance is of inestimable value and directly contributes to the UTech system's high placement rates.

We also serve students desiring to hone their skills to enter or advance in the workplace. The impact of career and technical education (CTE) on these students' lives is vast: one recent third-party study noted that UTech graduates experience an average wage increase of *between 20% and 30%* from one year prior to one year after graduating, depending on their program of study. This increase can make the difference in students moving into the middle class, buying a home, or in some cases, coming off public assistance.

Technical education offered by UTech institutions directly fuels Utah's economy and contributes to individuals' economic well-being. It is my hope that as you read this report, you too will catch the vision of CTE and UTech's impact on the State of Utah and its citizens.

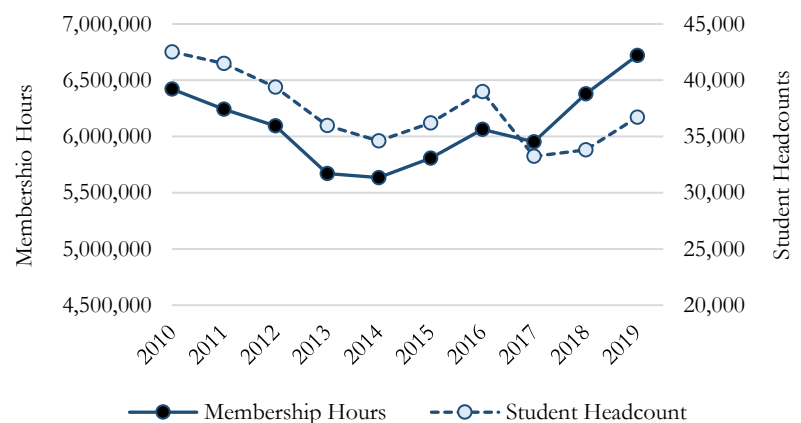
Jared Haines
Interim Commissioner of Technical Education

FY 2019 Student Enrollment and Outcomes

In FY 2019 the Utah System of Technical Colleges taught more hours of instruction than ever before in its 18-year history, with the eight technical colleges totaling 6,721,076 membership hours taught to 36,713 students. These figures represent growth of 5.19% and 6.51%, respectively over FY 2018. While secondary membership hours reached its highest total ever at 2.17 million, growth in FY 2019 was driven primarily by adult students; adult hours and headcount grew in 2019 by 6.59 and 6.92%, respectively.

Not only did the technical colleges provide more instruction, but they graduated 7,010 students in FY 2019 (up 15.35% over 2018), providing Utah businesses with new employees, each equipped with the skills to succeed in their respective industries. Our most popular programs continue to be those in the health care sector, with Certified Nurse's Assistant, Emergency Care Attendant (EMT Ambulance), and Pharmacy Technician appearing in the top programs for both secondary and adult students. Overall, programs leading to employment in health industries accounted for 51% of all awards conferred in FY 2019. Next highest were programs dedicated to personal and culinary services, mechanic and repair technologies, precision production, and computer and information sciences.

10-year History of Membership Hours & Student Headcounts



Most Awarded Certificates of FY 2019

Adult Students

Program	Graduates
Nursing Assistant and Patient Care Assistant/Aide	708
Cosmetology/Cosmetologist, General	307
Medical/Clinical Assistant	289
Truck & Bus Driver/Commercial Vehicle Operator	268
Licensed Practical/Vocational Nurse Training	253
Phlebotomy Technician/Phlebotomist	232
Welding Technology/Welder	224
Pharmacy Technician/Assistant	191
Emergency Care Attendant (EMT Ambulance)	166
Electrician	153

Secondary Students

Program	Graduates
Nursing Assistant and Patient Care Assistant/Aide	875
Emergency Care Attendant (EMT Ambulance)	139
Welding Technology/Welder	132
Pharmacy Technician/Assistant	99
Automobile Mechanics Technology/Technician	93
Phlebotomy Technician/Phlebotomist	56
Dental Assisting/Assistant	43
Cosmetology/Cosmetologist, General	41
Carpentry/Carpenter	36
Food Prep/Professional Cooking/Kitchen Asst.	24

System and individual technical colleges' performance may be examined in the FY 2019 Student Enrollment and Outcomes (SEO) Reports found in Appendices A1 through A9 on pages 11 through 19. SEO Reports highlight four primary rate calculations described below. Whereas universities report rates based on cohorts (e.g., freshmen entering in the fall) and temporal windows (e.g., four years to complete a bachelor's degree), these factors are not considered at technical colleges due to the open-entry/open-exit nature of our institutions and the varying lengths of programs offered. Rate calculations herein examine only certificate-seeking students who have left their programs through graduation or withdrawal; students still enrolled at the end of the year are excluded.

- Graduation Rates** – Graduation rates divide the number of graduates by the number of students who have exited programs. Graduation rates herein differ from those reported to accreditors. The Council on Occupational Education's policies instruct colleges to exclude students from graduation rates when they withdraw from one program and immediately enroll in another (excluded from only the first program's graduation rate), or when they are unable to earn a certificate due to illness, incarceration, death, military mobilization, or church missions. UTech includes these students to account for *all* students, regardless of their reasons for withdrawing.
- Completion Rates** – Completion rates divide the number of completers by the number of students who have exited programs. Completers, under COE's definition, are either program graduates or students who obtain related employment consequent to their studies ("non-graduate completers"). As UTech exists to meet the needs of Utah's employers for technically skilled workers, students who are hired early are counted positively when reporting to COE. Unlike graduation rates above, completion rates do exclude students from the denominator when they are unable to complete programs for reasons of internal transfer, sickness, incarceration, military mobilization, etc.
- Placement Rates** – Placement rates examine only completers (graduate or non-graduate) and divide the number of placed students by the sum of placed and unplaced students. Successful placement is employment in a field related to the program of study, enlistment in military service, or enrollment in another postsecondary educational program. As before, COE instructs colleges to exclude students from placement rate denominators when they are unavailable for placement for reasons of sickness, incarceration, church missions, etc. Also excluded are students who refuse employment offers or are awaiting state licensure before they can work.
- Licensure Rates** – Licensure rates are calculated for programs, the resultant occupations of which require state licensure (e.g., cosmetology, practical nursing, etc.). Rates are calculated by dividing the number of students who pass a required licensure exam by the number of students who took an exam.

60%

Composite
Graduation Rate

76%

Composite
Completion Rate

72%

Composite
Placement Rate

100%

Composite
Licensure Rate

Board of Trustees Strategic Goals & Metrics

In 2017 the UTech Board of Trustees established the following 10-year goals and associated metrics to assess system-wide performance. In the graphics that follow, previously established goals are shown using dotted lines while actual performance is denoted with solid lines.

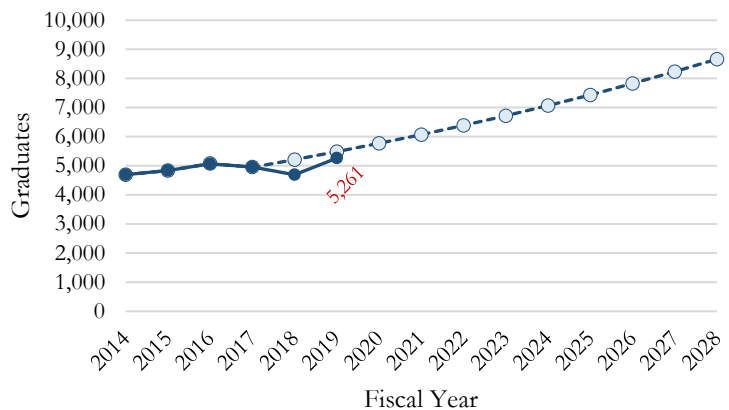
Goal #1: Provide every student the opportunity to obtain quality career and technical education resulting in a postsecondary credential.

- **Metric 1A** – Increase the number of postsecondary students graduating with a Board-approved postsecondary certificate by 75% by 2028.

To achieve a 75% increase in postsecondary graduates by 2028, UTech annually needed to grow its count of graduates by 5.22% beginning in 2017. Through 2019, postsecondary graduates have increased by an average of 3.14% annually, leaving the system 219 graduates shy of its goal for 2019.

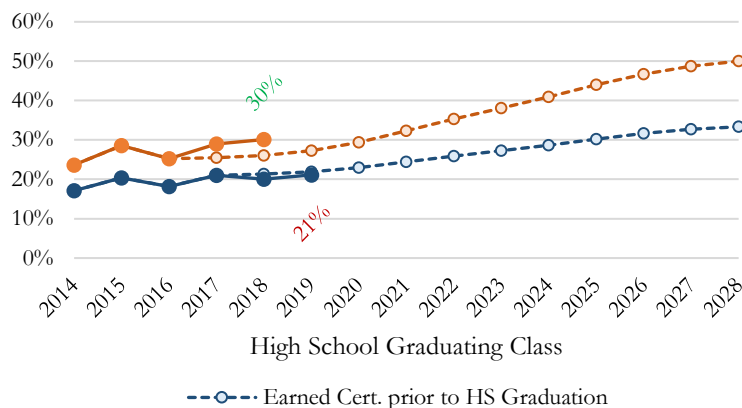
Of note is that counts of graduates are heavily dependent upon accreditation decisions. In late 2018 the Council on Occupational Education issued guidance to institutions regarding enrollment and outcome reporting for apprenticeship programs that caused UTech institutions to no longer count apprenticeship completers as graduates as reported to accreditors and herein. That guidance is under continued review by COE. Absent a revision thereto, this exclusion may impact UTech's ability to meet its goal to increase postsecondary graduates by 75% by 2028.

UTech Postsecondary Graduates,
FY 2014-19 with Desired FY 2020-28 Growth



- **Metric 1B** – Increase the proportion of enrolled secondary students graduating with a postsecondary certificate prior to high school completion to 33% by 2028.
- **Metric 1C** – Increase the proportion of enrolled secondary students graduating with a postsecondary certificate prior to or within one year following high school completion to 50% by 2028.

UTech Secondary Graduation Rates,
FY 2014-19 with Desired FY 2020-28 Growth



Among technical college students belonging to the high school graduating class of 2019, 21% earned a postsecondary certificate before finishing high school. This number was 20% in 2018, with another 10% of the class of 2018 completing their programs in one year subsequent to high school graduation. The UTech system appears to be on-track thus far in achieving the Board's goals that one-third of all secondary enrollees earn a certificate prior to high school completion and half graduate from a technical college within one year post-high school.

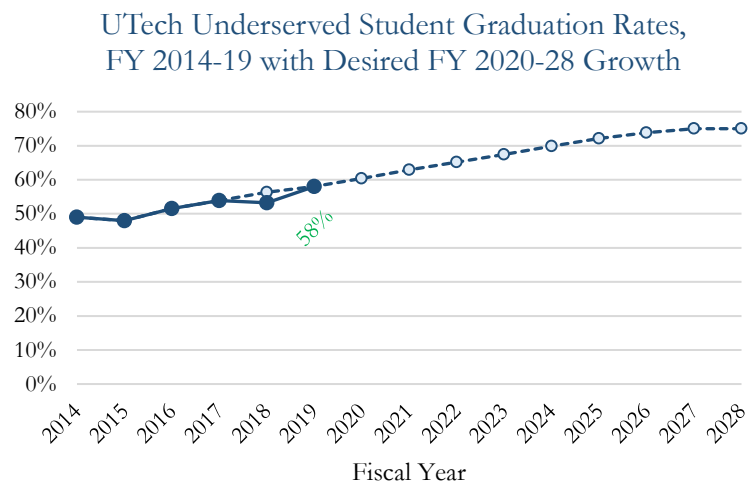
In 2018 the Utah State Legislature created the UTech scholarship specifically for secondary students enrolled in high-wage/high-demand programs who finish high school and then must start paying tuition.

This measure was refined in the 2019 legislative general session to empower the Board of Trustees, in consultation with DWS, to determine which specific programs the enrollees of which are eligible to receive this award. Legislative support provided

through the UTech scholarship will remove barriers to certificate completion, especially for our underserved student populations. Such efforts are expected to significantly and positively impact UTech’s progress towards these goals.

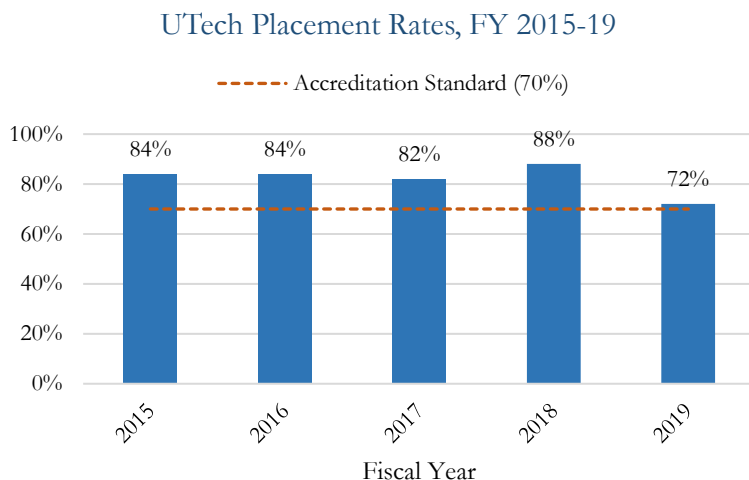
- *Metric 1D* – Increase the percentage of underserved students graduating with a technical college certificate to 75% by 2028.

Underserved students are those of ethnic/racial minority status, students receiving Pell Grants or BIA/DWS sponsorship, students with a disability, or those identified as single parents, displaced homemakers, economically disadvantaged, or of limited English proficiency. As a system, UTech has improved in its underserved graduation rate by almost 10% over the last five years. Technical colleges have made great strides in removing barriers to students’ completion. With legislative support through the Access Utah Promise Scholarship program (which awards scholarships to students who have not completed an associates or higher postsecondary degree and who demonstrate financial need), UTech is on-track to continue increasing underserved student graduation rates.



Goal #2: Meet critical economic and employer needs.

- *Metric 2A* – Continue to achieve placement rates for completers of certificate programs that meet or exceed accreditation standards by 10-20% annually. (Placement is defined as related employment, military service, or continuing education.)



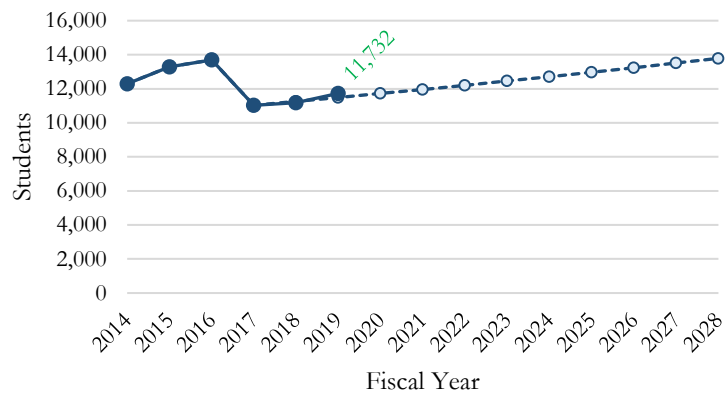
One measure of the extent to which technical colleges meet the needs Utah employers needs for technically skilled workers is their placement rate. The colleges, to maintain accreditation by the Council on Occupational Education, must maintain a 70% placement rate *for each program* offered. If a program fails to meet this standard, the college must submit a plan for improvement detailing concrete steps to bring placement rates up to the minimum standard. If rates continue to fall below this threshold, the colleges must discontinue underperforming programs or risk losing accreditation. Placement, as defined by COE, includes students who receive employment in a field related to instruction, serve in the military, or continue their education in another program or at another college/university.

The UTech Board of Trustees has set a goal that the technical colleges continue to maintain placement rates 10-20% above COE’s minimum standard. In 2019 the colleges have placed 72% of certificate-seekers thus far. Note that this number is preliminary; COE allows the colleges approx. five months after the end of the fiscal year to continue collecting placement and licensure information before annual accreditation reports are due. In December 2019 technical colleges will submit final placement numbers and this report will be updated.

- *Metric 2B* – Increase the number of incumbent workers receiving short-term job upgrade or continuing occupational education training in proportion to overall program enrollment by 25% by 2028.

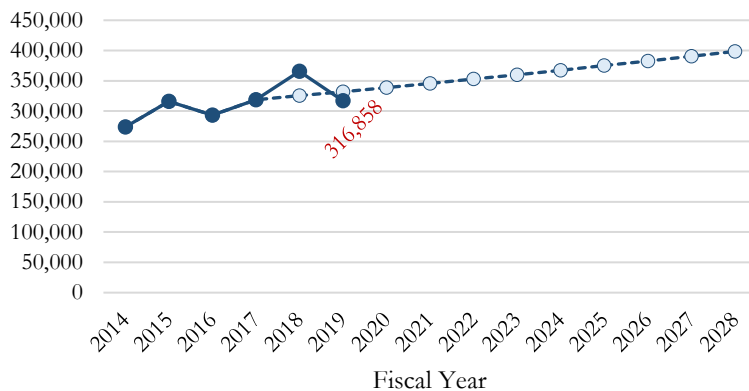
Recent revisions to UTech policy clarified that certain types of courses previously taught at the technical colleges will no longer factor into membership hour or student headcount total, resulting in a 21% drop in students enrolled in short-term occupational training in 2017. The Board of Trustees desires to increase the number of job upgrade or continuing occupational education enrollees by 25% by 2028 while maintaining a similar ratio of short-term trainees to certificate-seeking and secondary students. Annual growth of 2.05% is necessary to achieve this goal. In the two years since the goal was established, annual growth has averaged 3.19%. The UTech system is on-track to achieve this goal.

Short-term Occupational Enrollees,
FY 2014-19 with Desired FY 2020-28 Growth



- *Metric 2C* – Increase the amount of customized workforce training provided to Utah employers through the Custom Fit program by 25% by 2028.

Custom Fit Instructional Hours,
FY 2014-19 with Desired FY 2020-28 Growth



The Custom Fit program provides state-subsidized training to incumbent workers at Utah businesses. Companies partner with technical colleges and our USHE partners to design and/or arrange training opportunities to help Utah companies to grow, increase productivity, or gain a competitive edge. The Board of Trustees established a goal to increase instructional activity sponsored by Custom Fit by 25% in a decade.

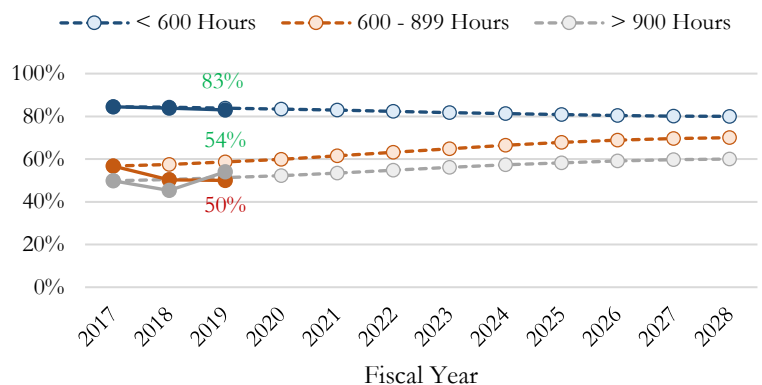
In 2019 instructional hours sponsored by Custom Fit decreased by 13.31% from 2018, though funds spent on direct training costs fell by only 0.70%, indicating that training opportunities sponsored by Custom Fit this year were more expensive than last. The Custom Fit cost per instructional hour rose 14.55% from 2018 to 2019.

Goal #3: Improve internal efficiencies.

- *Metric 3A* – Increase the percentage of certificate-seeking students who graduate with a technical college certificate to 80% for shorter programs (fewer than 600 hours), 70% for medium-length programs (600 hours or more but fewer than 900 hours), and 60% for longer programs (900 hours or more) by 2028.

Graduation rates are stratified by program length and are typically lower for longer programs than for the shortest programs. For programs of fewer than 600 hours, graduation rates are consistently above 80%

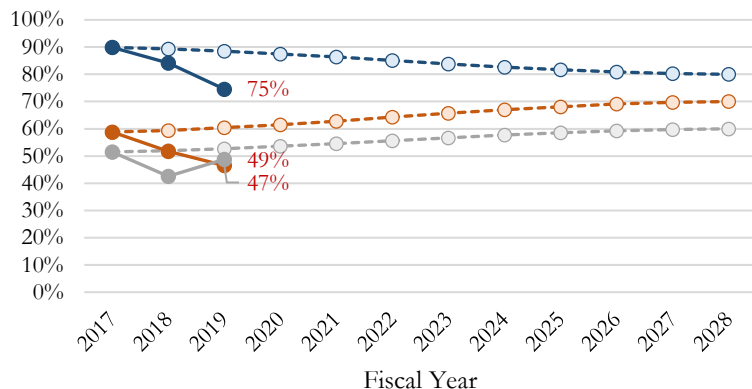
UTech Graduation Rates,
FY 2017-19 with Desired FY 2020-28 Growth



as they may be completed quickly (in 2019 UTech saw 1,583 graduates from certified nursing assistant programs completed in only 4-6 weeks). Technical colleges are committed to maintaining the current, high rates for these programs. For program of more than 900 hours, graduation rates increased to 54% in 2019, back on-track to achieving the system goal after an initial decline in 2018. Conversely, graduation rates for mid-length programs continued to fall to just 50% in FY 2019.

- **Metric 3B** – Increase the percentage of certificate-seeking students in identified high-wage/high-demand programs who graduate with a technical college certificate to 80% for shorter programs (fewer than 600 hours), 70% for medium-length programs (600 hours or more but fewer than 900 hours), and 60% for longer programs (900 hours or more) by 2028.

High-Demand Graduation Rates,
FY 2017-19 with Desired FY 2020-28 Growth



The Board of Trustees has set the goal that graduation rates for high-demand/high-impact programs mirror the desired rates of other programs at the colleges (i.e., an 80% for programs of fewer than 600 hours, 70% for programs of 600-899 hours, and 60% for programs of 900 hours or more).

Graduation rates for high-demand programs have slipped over the past two years to 75% for the shortest, 47% for mid-length, and 49% for the longest programs. One reason for the decline in 2019 is the addition of more programs to UTech's list of high-wage/high-demand training opportunities. Previously this metric analyzed graduation rates from 17 programs associated with DWS' statewide 4- and 5-star

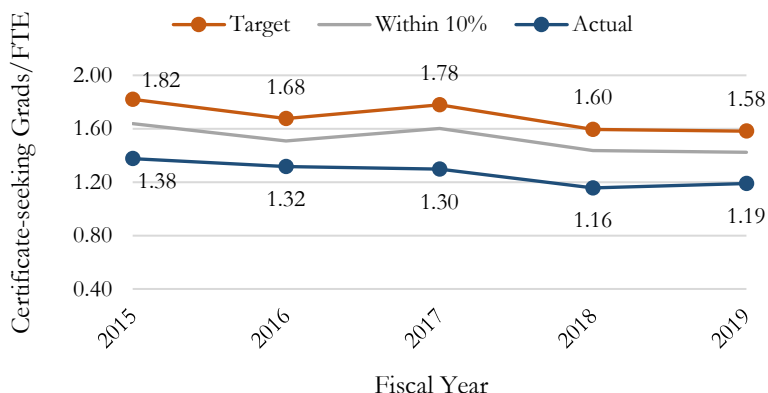
jobs. In 2019, in response the changes made to the UTech scholarship allowing the Board of Trustees to identify high-wage/high-demand jobs, the Board elected to consider programs as high-demand when associated with *region-specific* 4- and 5-star jobs, increasing the total number of programs considered to 49.

- **Metric 3C** – Achieve 90% of the ideal annual number of awards per certificate-seeking full-time-equivalent (FTE) student based on employer-demanded program lengths.

Because a large proportion of UTech students are enrolled in uncredentialed, short-term training, UTech calculates *certificate-seeking* graduates per FTE by dividing membership hours accrued by certificate-seekers by 900 to derive a full-time equivalent headcount. The number of certificate-seeking graduates is then divided by the resulting quotient.

Due to the variable lengths of programs offered, awards per FTE is a difficult metric to use within a technical college system. In the past we have calculated a "target" graduates per FTE by dividing 900 hours by the average length of certificates awarded in the fiscal year. In theory, if every student completed a program in 100% of expected time, graduates per FTE would equal this ideal. In 2017 the UTech Board initially set a goal that the system-wide graduates per FTE should be within 10% of this target calculation. One challenge is that these calculations are performed entirely retroactive to the fiscal year, after all awards are considered; colleges are unable to benchmark or track progress mid-year. Additionally, if graduation rates rise, the graduates per FTE also increases as the college becomes more efficient. The Board has concluded that due to the inability to benchmark progress, and because of the correlation between graduation rates and awards per FTE, this metric is extraneous. We will continue to report it, however, so long as it is a statutorily required metric in the UTech performance-based funding model.

UTech Graduates per Certificate-seeking FTE,
FY 2015-19



Performance-based Funding

In FY 2019 the Utah System of Technical Colleges was appropriated \$1.65 million for performance-based funding, \$684,441 of which is obligated to technical colleges for performance improvements observed in FY 2018. The remaining \$965,559 are divided among the colleges, with moneys apportioned based 50% upon the size of each college's state appropriation and 50% on the colleges' share of system-wide membership hours. These funds are made available to the colleges, provided they meet predetermined performance standards examined below.

Technical College Maximum Performance-based Funding Allocations

College	Total Appropriated Budget			Membership Hours			Total Funding Available
	FY 2019 Actual	Share of Total	Funding Available	FY 2019 Actual	Share of Total	Funding Available	
Bridgerland	\$15,432,800	16.85%	\$81,335	1,216,739	18.10%	\$87,402	\$168,737
Davis	\$18,231,000	19.90%	\$96,083	1,499,240	22.31%	\$107,695	\$203,778
Dixie	\$8,047,300	8.78%	\$42,412	403,101	6.00%	\$28,956	\$71,368
Mountainland	\$13,388,200	14.62%	\$70,560	1,351,204	20.10%	\$97,061	\$167,621
Ogden-Weber	\$17,318,900	18.91%	\$91,276	1,259,783	18.74%	\$90,494	\$181,770
Southwest	\$6,031,500	6.58%	\$31,788	290,837	4.33%	\$20,892	\$52,679
Tooele	\$4,532,900	4.95%	\$23,890	228,228	3.40%	\$16,394	\$40,284
Uintah Basin	\$8,621,300	9.41%	\$45,437	471,733	7.02%	\$33,886	\$79,323
Total	\$91,603,900	100.00%	\$482,780	6,720,864	100.00%	\$482,780	\$965,559

The UTech performance-based funding model scores technical colleges in five categories tied to UTech's mission, with funding apportioned based on relative weights assigned to each category:

- *Certificate Programs (30%)* – A college's score herein is driven primarily by its number of graduates, counted once *for each distinct program completed*. Hence, if a student completes two certificate programs (e.g., CNA and EMT) in the same year, the student is counted twice. More points are awarded for graduates of longer programs than shorter ones. Colleges also receive bonus points for each graduate of a program leading to a high-wage/high-demand industry as identified by the Utah Department of Workforce Services (DWS).
- *Short-term Occupational Training (10%)* – Points are awarded for already-employed students who complete short-term workforce training that does *not* lead to a certificate. More points are awarded for students who complete longer training sessions (> 60 hours) than shorter ones.
- *Secondary Completion (15%)* – Points are awarded for secondary students who graduate from a postsecondary certificate program while still in high school. College scores also increase as their proportions of retained secondary students who earn certificates within one year after completing high school increase.
- *Placement (25%)* – Points are awarded for each certificate-seeking student placed in related employment, military service, or continuing education in another postsecondary program. The college's composite placement rate is also factored into the category score, as are additional points for placements from programs leading to high-wage/high-demand industries. Lastly, points are awarded for placements from under-served student populations (ethnic/racial minority groups, students receiving Pell Grants or BIA/DWS sponsorship, students with a disability, single parents, displaced homemakers, public assistance recipients, or students of limited English proficiency).
- *Efficiency (20%)* – Efficiency is operationalized using certificate-seeking student graduation rates stratified by program length. Each rate is multiplied by a factor that increases as the program length increases, resulting in more points accrued for high graduation rates in longer programs. Certificate-seeking graduates per FTE is also factored into the category score.

Based on performance scores presented in Appendices B1 through B8 on pages 20 through 27, technical colleges have qualified for the following performance-based awards in FY 2019:

Technical College Performance-based Funding Awards

College	Category	Weight	Funding Available	FY 2015-18 Avg. Score	FY 2019 Score	Growth	Funding Awarded
Bridgerland	Certificate Programs	30%	\$50,621	2,357	3,348	42.04%	\$50,621
	Short-term Occupational Training	10%	\$16,874	194	169	-12.56%	\$0
	Secondary Completion	15%	\$25,311	12	56	349.35%	\$25,311
	Placement	25%	\$42,184	1,085	1,227	13.08%	\$42,184
	Efficiency	20%	\$33,747	212	205	-3.66%	\$0
	Total		\$168,737				\$118,116
Davis	Certificate Programs	30%	\$61,133	3,847	4,937	28.33%	\$61,133
	Short-term Occupational Training	10%	\$20,378	86	77	-11.27%	\$0
	Secondary Completion	15%	\$30,567	164	179	9.32%	\$30,567
	Placement	25%	\$50,944	1,569	1,557	-0.77%	\$0
	Efficiency	20%	\$40,756	173	186	7.75%	\$40,756
	Total		\$203,778				\$132,455
Dixie	Certificate Programs	30%	\$21,410	761	1,374	80.55%	\$21,410
	Short-term Occupational Training	10%	\$7,137	525	537	2.24%	\$3,201
	Secondary Completion	15%	\$10,705	48	90	85.67%	\$10,705
	Placement	25%	\$17,842	387	652	68.65%	\$17,842
	Efficiency	20%	\$14,274	197	190	-3.40%	\$0
	Total		\$71,368				\$53,158
Mountainland	Certificate Programs	30%	\$50,286	4,421	5,897	33.38%	\$50,286
	Short-term Occupational Training	10%	\$16,762	82	1	-98.30%	\$0
	Secondary Completion	15%	\$25,143	409	432	5.45%	\$25,143
	Placement	25%	\$41,905	1,236	749	-39.41%	\$0
	Efficiency	20%	\$33,524	278	235	-15.45%	\$0
	Total		\$167,621				\$75,429
Ogden-Weber	Certificate Programs	30%	\$54,531	3,095	3,574	15.48%	\$54,531
	Short-term Occupational Training	10%	\$18,177	100	95	-4.72%	\$0
	Secondary Completion	15%	\$27,265	98	109	10.50%	\$27,265
	Placement	25%	\$45,442	1,550	2,032	31.11%	\$45,442
	Efficiency	20%	\$36,354	163	141	-13.36%	\$0
	Total		\$181,770				\$127,239
Southwest	Certificate Programs	30%	\$15,804	651	1,330	104.22%	\$15,804
	Short-term Occupational Training	10%	\$5,268	45	84	86.42%	\$5,268
	Secondary Completion	15%	\$7,902	52	49	-5.99%	\$0
	Placement	25%	\$13,170	403	392	-2.61%	\$0
	Efficiency	20%	\$10,536	229	271	18.13%	\$10,536
	Total		\$52,679				\$31,608
Tooele	Certificate Programs	30%	\$12,085	541	740	36.91%	\$12,085
	Short-term Occupational Training	10%	\$4,028	7	12	65.12%	\$4,028
	Secondary Completion	15%	\$6,043	57	72	25.81%	\$6,043
	Placement	25%	\$10,071	430	485	12.81%	\$10,071
	Efficiency	20%	\$8,057	218	161	-26.01%	\$0
	Total		\$40,284				\$32,227
Utah Basin	Certificate Programs	30%	\$23,797	1,132	1,451	28.21%	\$23,797
	Short-term Occupational Training	10%	\$7,932	211	167	-20.93%	\$0
	Secondary Completion	15%	\$11,898	111	149	34.77%	\$11,898
	Placement	25%	\$19,831	632	540	-14.58%	\$0
	Efficiency	20%	\$15,865	257	309	20.45%	\$15,865
	Total		\$79,323				\$51,560
UTech System Totals	Certificate Programs	30%	\$289,668				\$289,668
	Short-term Occupational Training	10%	\$96,556				\$12,497
	Secondary Completion	15%	\$144,834				\$136,932
	Placement	25%	\$241,390				\$115,540
	Efficiency	20%	\$193,112				\$67,156
	Total		\$965,559				\$621,792

Tuition

Utah statute requires that UTech institutions provide training opportunities to students at little to no cost. Secondary students are not assessed tuition, and colleges strive to minimize secondary students' fees and textbook costs. Postsecondary tuition is assessed based on a student's scheduled hours of instruction. Tuition rates for FY 2018 and FY 2019 are displayed below and are assessed per membership hour.

Technical College Tuition per Membership Hour, FY 2018 – FY 2019

College	FY 2018 Tuition	FY 2019 Tuition	Growth	
Bridgerland Technical College	\$1.90	\$1.95	\$0.05	2.6%
Davis Technical College	\$2.10	\$2.10	--	--
Dixie Technical College	\$2.25	\$2.25	--	--
Mountainland Technical College	\$2.00	\$2.00	--	--
Ogden-Weber Technical College	\$1.95	\$2.00	\$0.05	2.6%
Southwest Technical College	\$1.95	\$1.95	--	--
Tooele Technical College	\$2.00	\$2.00	--	--
Uintah Basin Technical College	\$2.00	\$2.00	--	--

Tuition for some technical college programs differs from the rate schedule provided above. Per UTech policy, differential tuition rates must be approved annually by the Board of Trustees. In FY 2019, tuition was lower for the Farming and Ranch Management programs at Bridgerland and Uintah Basin Technical Colleges to remove students' barriers to receiving postsecondary education. In addition, differential tuition rates were approved at Bridgerland, Davis, Ogden-Weber, and Tooele Technical Colleges for students participating in their respective college's academic learning center.

Technical college fees differ from program to program and college to college and are charged in addition to tuition. Fees typically help cover the cost of consumables and/or college services.

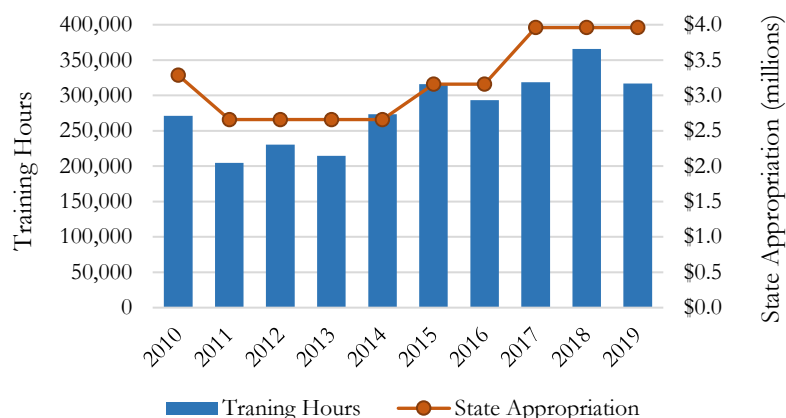
Custom Fit

Custom Fit is a flexible, customized training program designed to meet the training needs of Utah businesses. Each year, more than 1,500 local businesses contract with one of Utah's eight technical colleges, Utah State University Eastern, or Snow College to receive state-subsidized training for their employees. For almost 40 years, Custom Fit has provided a means for small and large businesses to grow, increase productivity, or maintain a competitive edge.

In FY 2019 the Custom Fit program served 1,716 distinct companies throughout the state, 6.33% fewer than in 2018. The colleges also taught 13.31% fewer hours than last year (316,858 in total), though individual trainees increased by 11.75%

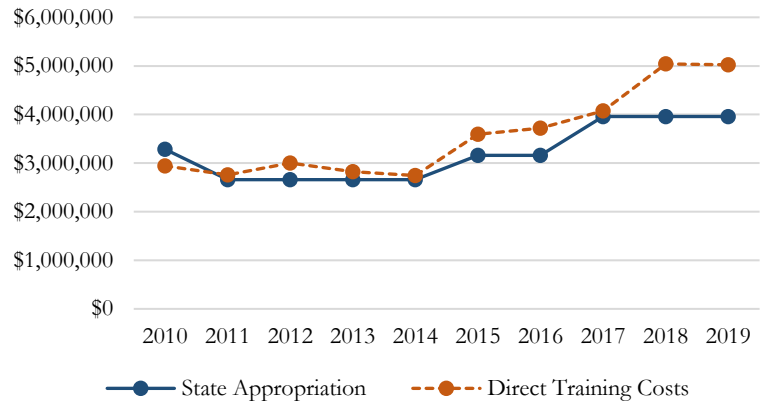
(19,626 in total) to the highest level since UTech (UCAT) was established in 2001. Of note is that the colleges spent only 0.70% less on direct training costs in 2019 than in 2018, indicating that the cost of individual company training sessions increased significantly over the past year (cost per instructional hour increased by 14.55%). Where the Custom Fit program exists to provide customized training opportunities for Utah businesses based on their individual needs, costs of training, the number of companies served, or the amount of instruction that resources can provide may differ widely year to year based on what companies need at the time. In 2019, 47% of training sessions were offered to companies seeking increased productivity, 37% to companies seeking growth, and 16% to businesses seeking to gain or maintain a competitive edge.

Custom Fit 10-year History of Training Hours & State Appropriations



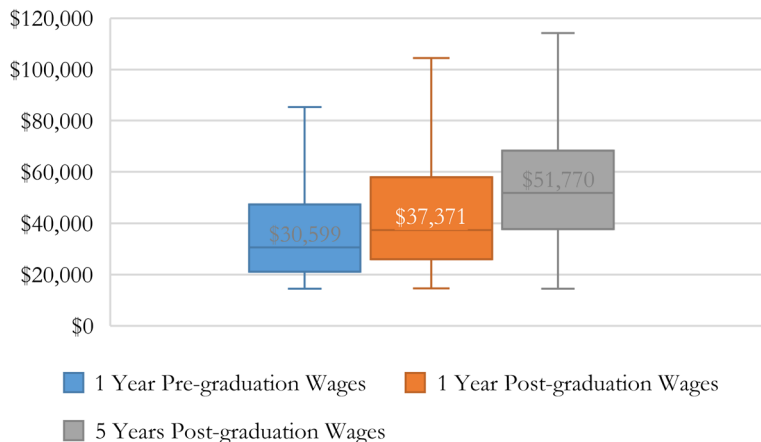
Per UTech policy, at least 50% of every training opportunity provided or arranged by the Custom Fit program must be paid by the companies contracting with Custom Fit (with rare exceptions approved by college presidents). In 2019 the average company contribution to training received was 61.52%. These funds paid by companies may then be utilized to provide training to *even more businesses*, stretching legislative investment in the Custom Fit program even further. Custom Fit providers have seen a dramatic increase in efficiency over the past two years, as funds spent directly on training (whether from appropriations or company contributions) have grown to exceed legislative investment in Custom Fit by over \$1 million annually.

Custom Fit Appropriations & Direct Training Costs, FY 2010-19



Student Employment & Wage Outcomes

FY 2014 Graduating Cohort Wages



UTech recently underwent an analysis of its graduates' earning power one year prior to graduating, one year after graduating, and five years after graduating from a technical college. Examining just the graduating cohort of FY 2014 (the most recent cohort for which 5-year wage data are available), systemwide the median wage increased by of 22.16% from one year prior to one year after graduating. To individual students this increase in salary may mean the difference in entering the middle class, purchasing a home, or coming off public assistance. Wages continued to increase in the intervening years until year 5, though attributing these later increases to students' certificate attainment becomes less tenable as increases in age and experience also factor into earnings.

This analysis coincides with the recent release of a [report](#) by the Utah Data Research Center (UDRC) in which it analyzed the return on legislative investment (i.e., appropriations) in the Utah System of Technical Colleges. That report, released in October 2019, concluded that for students graduating between 2011 and 2016, even after adjusting for normal state wage growth, the average UTech graduate's salaries increased by 31.98% for students completing our longest programs (more than 900 hours in length) and 20.52% for students completing our shortest (fewer than 900 hours). The UDRC also highlighted UTech graduates' impressive workforce retention rates, as 97.3% of these graduates were retained in the Utah workforce one year after graduating, and 86.8% were retained five years after.

The UDRC report estimated state income tax receipts for these students based on new wages earned and, considering job retention, calculated a payback period in which the legislature could expect to recoup its annual investment in the technical colleges system. Based solely on graduates who were working in unemployment insurance-paying jobs in the years prior to and after graduating (approx. 18% of UTech's student population), and based solely on expected income tax receipts from increased wages (i.e., not considering sales, property, gas, or other taxes), UDRC estimates that the legislature breaks even on its investment after 10-11 years. Considering that the average graduate of the UTech system is only 26 years old with a 40-year working life ahead of him or her, legislative investment may be recovered multiple times over before graduates leave the labor force. Further, UTech leaders are confident that upon considering students who leave without graduating but with a job offer in-hand, students who were unemployed prior to graduating but who obtained work afterwards, students enrolled in non-credentialed education, and other tax revenue streams, legislative investment in UTech is recouped in far less time than was estimated by UDRC.

Appendix A1: Preliminary Utah System of Technical Colleges, System-wide Student Enrollment and Outcomes Report, FY 2019

Certificate-seeking Students					
	(Program Length)				
	0-599 Hours	600-899 hours	900+ hours	Incarcerated Students	Total
Membership Hours	445,347	794,262	2,620,083	109,845	3,969,537
Headcount				369	13,659
Sum of Individual Program Headcounts (allowing enrollment in multiple programs) †	2,982	3,618	7,149	414	14,163
Still Enrolled	506	1,638	3,190	92	5,426
Graduates	2,046	995	2,120	82	5,243
Non-graduates	430	985	1,839	240	3,494
Graduation Rate	83%	50%	54%	25%	60%
Non-graduate Completers ("Early Hires") ‡	43	364	506	1	914
Allowable Subtractions	63	62	246	235	606
<i>Withdrew and Enrolled in Another Program</i>	24	27	84	2	137
<i>Unavailable to Earn a Credential</i>	39	35	162	233	469
Completion Rate (utilizing COE standards)	87%	71%	71%	95%	76%
Placed Students (includes Non-graduate Completers)	1,091	833	1,912	33	3,869
<i>Related Employment</i>	743	727	1,669	4	3,143
<i>Military Service</i>	3	1	5	0	9
<i>Continuing Education</i>	345	105	238	29	717
Allowable Subtractions	383	87	245	50	765
<i>Awaiting Licensure</i>	361	73	166	0	600
<i>Unavailable for Employment</i>	16	9	52	50	127
<i>Refused Employment</i>	6	5	27	0	38
Unplaced Students	621	439	469	0	1,529
Placement Rate (utilizing COE standards)	64%	65%	80%	100%	72%
Graduates who Passed a Req'd Licensure Exam	669	162	414	0	1,245
Graduates who Took a Req'd Licensure Exam	674	162	415	0	1,251
Licensure Rate (utilizing COE standards)	99%	100%	100%	--	100%
Weighted Average Certificate Length (hours)					569

Short-term Occupational Training §	
<i>Job Upgrade</i>	
Membership Hours	57,585
Headcount	482
Additional Program Graduates	18
<i>Continuing Occupational Education</i>	
Membership Hours	334,014
Headcount	11,234
Average Length of Training (hours)	33

Students Enrolled in Other Training	
Membership Hours	188,225
Headcount	3,038
<i>Basic Skills Students</i>	1,431
<i>Personal Interest Students</i>	1,530
<i>Job Re-entry Students</i>	48
<i>Senior Citizens</i>	29

* Some totals herein may not equal the sum of their parts due to rounding error.

† Certificate-seeking students are counted once for each accredited program in which they enroll. Hence, a student completing one program and enrolling in a second in the same year (e.g., completing CNA then enrolling in EMT) is counted twice.

‡ Non-graduate completers, under direction from COE, are students who exit a program without obtaining a credential but who obtain employment in a field related to instruction consequent to the students' studies. This also includes students leaving a program unsuccessfully but articulating to another institution of higher education, allowing students' coursework to fulfill program requirements elsewhere.

§ Job Upgrade students are currently employed in a field related to instruction and enroll in only part of an accredited program with the intent to advance in the workplace. Continuing Occupational Education students are also employed but enroll in stand-alone courses with the intent to maintain employment (e.g., regular re-licensure).

Secondary Students				
	(Hours Accrued)			
	0-599 hours	600-899 hours	900+ hours	Total
Membership Hours	1,546,608	389,766	235,341	2,171,715
Headcount	9,128	563	201	9,892
Secondary Graduates (program length)	1,362	256	131	1,749
% Secondary Students Earning Certificate				18%

Postsecondary Membership Hours	4,549,361	Secondary Membership Hours	2,171,715
Distinct Postsecondary Headcount	26,821	Distinct Secondary Headcount	9,892

Appendix A2: Preliminary Bridgerland Technical College Student Enrollment and Outcomes Report, FY 2019

Certificate-seeking Students				
	(Program Length)			
	0-599 hours	600-899 hours	900+ hours	Total
Membership Hours	47,550	111,840	523,405	682,795
Headcount				1,954
Sum of Individual Program Headcounts (allowing enrollment in multiple programs) †	390	396	1,235	2,021
Still Enrolled	48	216	562	826
Graduates	281	124	397	802
Non-graduates	61	56	276	393
Graduation Rate	82%	69%	59%	67%
Non-graduate Completers ("Early Hires") ‡	1	8	67	76
Allowable Subtractions	2	3	30	35
<i>Withdrew and Enrolled in Another Program</i>	2	0	12	14
<i>Unavailable to Earn a Credential</i>	0	3	18	21
Completion Rate (utilizing COE standards)	83%	75%	72%	76%
Placed Students (includes Non-graduate Completers)	161	106	377	644
<i>Related Employment</i>	107	79	323	509
<i>Military Service</i>	0	0	1	1
<i>Continuing Education</i>	54	27	53	134
Allowable Subtractions	50	8	26	84
<i>Awaiting Licensure</i>	47	6	7	60
<i>Unavailable for Employment</i>	2	1	11	14
<i>Refused Employment</i>	1	1	8	10
Unplaced Students	71	18	61	150
Placement Rate (utilizing COE standards)	69%	85%	86%	81%
Graduates who Passed a Req'd Licensure Exam	144	25	56	225
Graduates who Took a Req'd Licensure Exam	144	25	56	225
Licensure Rate (utilizing COE standards)	100%	100%	100%	100%
Weighted Average Certificate Length (hours)				668

Secondary Students				
	(Hours Accrued)			
	0-599 hours	600-899 hours	900+ hours	Total
Membership Hours	356,817	31,864	18,679	407,360
Headcount	1,968	46	17	2,031
Secondary Graduates (program length)	79	1	18	98
% Secondary Students Earning Certificate				5%

Postsecondary Membership Hours	809,439	Secondary Membership Hours	407,360
Distinct Postsecondary Headcount	3,791	Distinct Secondary Headcount	2,031

Short-term Occupational Training §	
<i>Job Upgrade</i>	
Membership Hours	10,425
Headcount	94
<i>Continuing Occupational Education</i>	
Membership Hours	79,634
Headcount	1,682
Average Length of Training (hours)	51

Students Enrolled in Other Training	
Membership Hours	36,585
Headcount	714
<i>Basic Skills Students</i>	628
<i>Personal Interest Students</i>	83
<i>Job Re-entry Students</i>	0
<i>Senior Citizens</i>	3

* Some totals herein may not equal the sum of their parts due to rounding error.

† Certificate-seeking students are counted once for each accredited program in which they enroll. Hence, a student completing one program and enrolling in a second in the same year (e.g., completing CNA then enrolling in EMT) is counted twice.

‡ Non-graduate completers, under direction from COE, are students who exit a program without obtaining a credential but who obtain employment in a field related to instruction consequent to the students' studies. This also includes students leaving a program unsuccessfully but articulating to another institution of higher education, allowing students' coursework to fulfill program requirements elsewhere.

§ Job Upgrade students are currently employed in a field related to instruction and enroll in only part of an accredited program with the intent to advance in the workplace. Continuing Occupational Education students are also employed but enroll in stand-alone courses with the intent to maintain employment (e.g., regular re-licensure).

|| Secondary headcounts are stratified by the hours accrued within FY 2019. Secondary graduates are stratified by program length, irrespective of when a student's hours were accrued. Some students began programs and accrued hours in FY 2018 but completed their certificates in FY 2019. Hence, secondary graduates in a program length stratification may be greater than the headcount of students completing the specified number of hours during FY 2019.

Appendix A3: Preliminary Davis Technical College Student Enrollment and Outcomes Report, FY 2019

Certificate-seeking Students					
	(Program Length)				
	0-599 Hours	600-899 hours	900+ hours	Incarcerated Students	Total
Membership Hours	115,666	142,809	649,251	105,165	1,012,891
Headcount				345	3,409
Sum of Individual Program Headcounts (allowing enrollment in multiple programs) †	660	641	1,883	390	3,574
Still Enrolled	100	373	878	86	1,437
Graduates	469	152	496	65	1,182
Non-graduates	91	116	509	239	955
Graduation Rate	84%	57%	49%	21%	55%
Non-graduate Completers ("Early Hires") ‡	1	43	117	1	162
Allowable Subtractions	22	2	41	235	300
<i>Withdrew and Enrolled in Another Program</i>	1	0	19	2	22
<i>Unavailable to Earn a Credential</i>	21	2	22	233	278
Completion Rate (utilizing COE standards)	87%	73%	64%	96%	73%
Placed Students (includes Non-graduate Completers)	161	131	505	33	830
<i>Related Employment</i>	74	114	397	4	589
<i>Military Service</i>	0	0	3	0	3
<i>Continuing Education</i>	87	17	105	29	238
Allowable Subtractions	46	19	26	33	124
<i>Awaiting Licensure</i>	45	18	9	0	72
<i>Unavailable for Employment</i>	1	1	14	33	49
<i>Refused Employment</i>	0	0	3	0	3
Unplaced Students	263	45	82	0	390
Placement Rate (utilizing COE standards)	38%	74%	86%	100%	68%
Graduates who Passed a Req'd Licensure Exam	181	77	150	0	408
Graduates who Took a Req'd Licensure Exam	186	77	150	0	413
Licensure Rate (utilizing COE standards)	97%	100%	100%	--	99%
Weighted Average Certificate Length (hours)					634

Short-term Occupational Training §	
<i>Job Upgrade</i>	
Membership Hours	26,343
Headcount	175
Additional Program Graduates	3
<i>Continuing Occupational Education</i>	
Membership Hours	11,292
Headcount	769
Average Length of Training (hours)	40

Students Enrolled in Other Training	
Membership Hours	39,002
Headcount	530
<i>Basic Skills Students</i>	371
<i>Personal Interest Students</i>	150
<i>Job Re-entry Students</i>	4
<i>Senior Citizens</i>	5

* Some totals herein may not equal the sum of their parts due to rounding error.

† Certificate-seeking students are counted once for each accredited program in which they enroll. Hence, a student completing one program and enrolling in a second in the same year (e.g., completing CNA then enrolling in EMT) is counted twice.

‡ Non-graduate completers, under direction from COE, are students who exit a program without obtaining a credential but who obtain employment in a field related to instruction consequent to the students' studies. This also includes students leaving a program unsuccessfully but articulating to another institution of higher education, allowing students' coursework to fulfill program requirements elsewhere.

§ Job Upgrade students are currently employed in a field related to instruction and enroll in only part of an accredited program with the intent to advance in the workplace. Continuing Occupational Education students are also employed but enroll in stand-alone courses with the intent to maintain employment (e.g., regular re-licensure).

Secondary Students				
	(Hours Accrued)			
	0-599 hours	600-899 hours	900+ hours	Total
Membership Hours	236,709	116,458	56,545	409,713
Headcount	1,248	165	51	1,464
Secondary Graduates (program length)	216	40	24	280
% Secondary Students Earning Certificate				19%

Postsecondary Membership Hours	1,089,527	Secondary Membership Hours	409,713
Distinct Postsecondary Headcount	4,546	Distinct Secondary Headcount	1,464

Appendix A4: Preliminary Dixie Technical College Student Enrollment and Outcomes Report, FY 2019

Certificate-seeking Students				
	(Program Length)			
	0-599 hours	600-899 hours	900+ hours	Total
Membership Hours	16,166	73,480	186,717	276,363
Headcount				938
Sum of Individual Program Headcounts (allowing enrollment in multiple programs) †	122	405	413	940
Still Enrolled	15	241	214	470
Graduates	98	69	129	296
Non-graduates	9	95	70	174
Graduation Rate	92%	42%	65%	63%
Non-graduate Completers ("Early Hires") ‡	0	38	15	53
Allowable Subtractions	1	1	5	7
<i>Withdrew and Enrolled in Another Program</i>	0	0	0	0
<i>Unavailable to Earn a Credential</i>	1	1	5	7
Completion Rate (utilizing COE standards)	92%	66%	74%	75%
Placed Students (includes Non-graduate Completers)	72	95	120	287
<i>Related Employment</i>	53	90	115	258
<i>Military Service</i>	1	1	0	2
<i>Continuing Education</i>	18	4	5	27
Allowable Subtractions	0	6	1	7
<i>Awaiting Licensure</i>	0	6	0	6
<i>Unavailable for Employment</i>	0	0	1	1
<i>Refused Employment</i>	0	0	0	0
Unplaced Students	26	6	23	55
Placement Rate (utilizing COE standards)	73%	94%	84%	84%
Graduates who Passed a Req'd Licensure Exam	0	15	0	15
Graduates who Took a Req'd Licensure Exam	0	15	0	15
Licensure Rate (utilizing COE standards)	--	100%	--	100%
Weighted Average Certificate Length (hours)				621

Secondary Students				
	(Hours Accrued)			
	0-599 hours	600-899 hours	900+ hours	Total
Membership Hours	40,556	12,241	10,921	63,718
Headcount	268	17	11	296
Secondary Graduates (program length)	48	6	14	68
% Secondary Students Earning Certificate				23%

Postsecondary Membership Hours	339,383	Secondary Membership Hours	63,718
Distinct Postsecondary Headcount	6,152	Distinct Secondary Headcount	296

Short-term Occupational Training §	
<i>Job Upgrade</i>	
Membership Hours	1,390
Headcount	10
Additional Program Graduates	4
<i>Continuing Occupational Education</i>	
Membership Hours	60,758
Headcount	5,257
Average Length of Training (hours)	12

Students Enrolled in Other Training	
Membership Hours	873
Headcount	14
<i>Basic Skills Students</i>	0
<i>Personal Interest Students</i>	11
<i>Job Re-entry Students</i>	2
<i>Senior Citizens</i>	1

* Some totals herein may not equal the sum of their parts due to rounding error.

† Certificate-seeking students are counted once for each accredited program in which they enroll. Hence, a student completing one program and enrolling in a second in the same year (e.g., completing CNA then enrolling in EMT) is counted twice.

‡ Non-graduate completers, under direction from COE, are students who exit a program without obtaining a credential but who obtain employment in a field related to instruction consequent to the students' studies. This also includes students leaving a program unsuccessfully but articulating to another institution of higher education, allowing students' coursework to fulfill program requirements elsewhere.

§ Job Upgrade students are currently employed in a field related to instruction and enroll in only part of an accredited program with the intent to advance in the workplace. Continuing Occupational Education students are also employed but enroll in stand-alone courses with the intent to maintain employment (e.g., regular re-licensure).

|| Secondary headcounts are stratified by the hours accrued within FY 2019. Secondary graduates are stratified by program length, irrespective of when a student's hours were accrued. Some students began programs and accrued hours in FY 2018 but completed their certificates in FY 2019. Hence, secondary graduates in a program length stratification may be greater than the headcount of students completing the specified number of hours during FY 2019.

Appendix A5: Preliminary Mountainland Technical College Student Enrollment and Outcomes Report, FY 2019

Certificate-seeking Students				
	(Program Length)			
	0-599 hours	600-899 hours	900+ hours	Total
Membership Hours	94,502	238,220	447,047	779,769
Headcount				2,961
Sum of Individual Program Headcounts (allowing enrollment in multiple programs) †	639	1,226	1,124	2,989
Still Enrolled	152	610	571	1,333
Graduates	429	353	431	1,213
Non-graduates	58	263	122	443
Graduation Rate	88%	57%	78%	73%
Non-graduate Completers ("Early Hires") ‡	1	6	13	20
Allowable Subtractions	5	15	23	43
<i>Withdrew and Enrolled in Another Program</i>	0	0	1	1
<i>Unavailable to Earn a Credential</i>	5	15	22	42
Completion Rate (utilizing COE standards)	89%	60%	84%	76%
Placed Students (includes Non-graduate Completers)	154	90	168	412
<i>Related Employment</i>	106	75	153	334
<i>Military Service</i>	0	0	1	1
<i>Continuing Education</i>	48	15	14	77
Allowable Subtractions	187	36	135	358
<i>Awaiting Licensure</i>	183	31	121	335
<i>Unavailable for Employment</i>	4	5	14	23
<i>Refused Employment</i>	0	0	0	0
Unplaced Students	89	233	141	463
Placement Rate (utilizing COE standards)	63%	28%	54%	47%
Graduates who Passed a Req'd Licensure Exam	81	19	61	161
Graduates who Took a Req'd Licensure Exam	81	19	62	162
Licensure Rate (utilizing COE standards)	100%	100%	98%	99%
Weighted Average Certificate Length (hours)				480

Secondary Students				
	(Hours Accrued)			
	0-599 hours	600-899 hours	900+ hours	Total
Membership Hours	308,836	135,536	103,231	547,603
Headcount	1,311	204	77	1,592
Secondary Graduates (program length)	702	135	23	860
% Secondary Students Earning Certificate				54%

Postsecondary Membership Hours	803,601	Secondary Membership Hours	547,603
Distinct Postsecondary Headcount	3,432	Distinct Secondary Headcount	1,592

Short-term Occupational Training §	
<i>Job Upgrade</i>	
Membership Hours	3,483
Headcount	23
Additional Program Graduates	7
<i>Continuing Occupational Education</i>	
Membership Hours	343
Headcount	16
Average Length of Training (hours)	98

Students Enrolled in Other Training	
Membership Hours	20,006
Headcount	640
<i>Basic Skills Students</i>	84
<i>Personal Interest Students</i>	555
<i>Job Re-entry Students</i>	0
<i>Senior Citizens</i>	1

* Some totals herein may not equal the sum of their parts due to rounding error.

† Certificate-seeking students are counted once for each accredited program in which they enroll. Hence, a student completing one program and enrolling in a second in the same year (e.g., completing CNA then enrolling in EMT) is counted twice.

‡ Non-graduate completers, under direction from COE, are students who exit a program without obtaining a credential but who obtain employment in a field related to instruction consequent to the students' studies. This also includes students leaving a program unsuccessfully but articulating to another institution of higher education, allowing students' coursework to fulfill program requirements elsewhere.

§ Job Upgrade students are currently employed in a field related to instruction and enroll in only part of an accredited program with the intent to advance in the workplace. Continuing Occupational Education students are also employed but enroll in stand-alone courses with the intent to maintain employment (e.g., regular re-licensure).

Appendix A6: Preliminary Ogden-Weber Technical College Student Enrollment and Outcomes Report, FY 2019

Certificate-seeking Students				
	(Program Length)			
	0-599 hours	600-899 hours	900+ hours	Total
Membership Hours	64,832	121,338	554,023	740,193
Headcount				2,855
Sum of Individual Program Headcounts (allowing enrollment in multiple programs) †	472	662	1,834	2,968
Still Enrolled	96	125	736	957
Graduates	269	133	409	811
Non-graduates	107	404	689	1,200
Graduation Rate	72%	25%	37%	40%
Non-graduate Completers ("Early Hires") ‡	17	259	234	510
Allowable Subtractions	17	28	115	160
<i>Withdrew and Enrolled in Another Program</i>	12	18	44	74
<i>Unavailable to Earn a Credential</i>	5	10	71	86
Completion Rate (utilizing COE standards)	80%	77%	65%	71%
Placed Students (includes Non-graduate Completers)	176	324	516	1,016
<i>Related Employment</i>	124	315	485	924
<i>Military Service</i>	0	0	0	0
<i>Continuing Education</i>	52	9	31	92
Allowable Subtractions	67	14	48	129
<i>Awaiting Licensure</i>	63	11	26	100
<i>Unavailable for Employment</i>	1	0	12	13
<i>Refused Employment</i>	3	3	10	16
Unplaced Students	43	54	79	176
Placement Rate (utilizing COE standards)	80%	86%	87%	85%
Graduates who Passed a Req'd Licensure Exam	39	26	87	152
Graduates who Took a Req'd Licensure Exam	39	26	87	152
Licensure Rate (utilizing COE standards)	100%	100%	100%	100%
Weighted Average Certificate Length (hours)				684

Secondary Students				
	(Hours Accrued)			
	0-599 hours	600-899 hours	900+ hours	Total
Membership Hours	265,536	66,716	33,569	365,821
Headcount	1,703	93	33	1,829
Secondary Graduates (program length)	97	13	30	140
% Secondary Students Earning Certificate				8%

Postsecondary Membership Hours	893,962	Secondary Membership Hours	365,821
Distinct Postsecondary Headcount	4,191	Distinct Secondary Headcount	1,829

Short-term Occupational Training §	
<i>Job Upgrade</i>	
Membership Hours	5,603
Headcount	94
<i>Continuing Occupational Education</i>	
Membership Hours	113,452
Headcount	1,016
Average Length of Training (hours)	107

Students Enrolled in Other Training	
Membership Hours	34,714
Headcount	321
<i>Basic Skills Students</i>	170
<i>Personal Interest Students</i>	101
<i>Job Re-entry Students</i>	41
<i>Senior Citizens</i>	9

* Some totals herein may not equal the sum of their parts due to rounding error.

† Certificate-seeking students are counted once for each accredited program in which they enroll. Hence, a student completing one program and enrolling in a second in the same year (e.g., completing CNA then enrolling in EMT) is counted twice.

‡ Non-graduate completers, under direction from COE, are students who exit a program without obtaining a credential but who obtain employment in a field related to instruction consequent to the students' studies. This also includes students leaving a program unsuccessfully but articulating to another institution of higher education, allowing students' coursework to fulfill program requirements elsewhere.

§ Job Upgrade students are currently employed in a field related to instruction and enroll in only part of an accredited program with the intent to advance in the workplace. Continuing Occupational Education students are also employed but enroll in stand-alone courses with the intent to maintain employment (e.g., regular re-licensure).

Appendix A7: Preliminary Southwest Technical College Student Enrollment and Outcomes Report, FY 2019

Certificate-seeking Students				
	(Program Length)			
	0-599 hours	600-899 hours	900+ hours	Total
Membership Hours	29,475	79,673	82,152	191,300
Headcount				566
Sum of Individual Program Headcounts (allowing enrollment in multiple programs) †	207	181	216	604
Still Enrolled	7	42	69	118
Graduates	182	108	108	398
Non-graduates	18	31	39	88
Graduation Rate	91%	78%	73%	82%
Non-graduate Completers ("Early Hires") ‡	0	1	10	11
Allowable Subtractions	2	8	6	16
<i>Withdrew and Enrolled in Another Program</i>	0	6	0	6
<i>Unavailable to Earn a Credential</i>	2	2	6	10
Completion Rate (utilizing COE standards)	92%	83%	84%	87%
Placed Students (includes Non-graduate Completers)	86	35	60	181
<i>Related Employment</i>	50	23	51	124
<i>Military Service</i>	2	0	0	2
<i>Continuing Education</i>	34	12	9	55
Allowable Subtractions	27	1	0	28
<i>Awaiting Licensure</i>	20	0	0	20
<i>Unavailable for Employment</i>	7	0	0	7
<i>Refused Employment</i>	0	1	0	1
Unplaced Students	75	73	58	206
Placement Rate (utilizing COE standards)	55%	32%	51%	48%
Graduates who Passed a Req'd Licensure Exam	118	0	6	124
Graduates who Took a Req'd Licensure Exam	118	0	6	124
Licensure Rate (utilizing COE standards)	100%	--	100%	100%
Weighted Average Certificate Length (hours)				469

Secondary Students				
	(Hours Accrued)			
	0-599 hours	600-899 hours	900+ hours	Total
Membership Hours	74,859	3,491	945	79,295
Headcount	827	5	1	833
Secondary Graduates (program length)	51	1	1	53
% Secondary Students Earning Certificate				6%

Postsecondary Membership Hours	211,541	Secondary Membership Hours	79,295
Distinct Postsecondary Headcount	1,512	Distinct Secondary Headcount	833

Short-term Occupational Training §	
<i>Job Upgrade</i>	
Membership Hours	90
Headcount	1
<i>Continuing Occupational Education</i>	
Membership Hours	18,317
Headcount	765
Average Length of Training (hours)	24

Students Enrolled in Other Training	
Membership Hours	1,835
Headcount	253
<i>Basic Skills Students</i>	0
<i>Personal Interest Students</i>	252
<i>Job Re-entry Students</i>	0
<i>Senior Citizens</i>	1

* Some totals herein may not equal the sum of their parts due to rounding error.

† Certificate-seeking students are counted once for each accredited program in which they enroll. Hence, a student completing one program and enrolling in a second in the same year (e.g., completing CNA then enrolling in EMT) is counted twice.

‡ Non-graduate completers, under direction from COE, are students who exit a program without obtaining a credential but who obtain employment in a field related to instruction consequent to the students' studies. This also includes students leaving a program unsuccessfully but articulating to another institution of higher education, allowing students' coursework to fulfill program requirements elsewhere.

§ Job Upgrade students are currently employed in a field related to instruction and enroll in only part of an accredited program with the intent to advance in the workplace. Continuing Occupational Education students are also employed but enroll in stand-alone courses with the intent to maintain employment (e.g., regular re-licensure).

Appendix A8: Preliminary Tooele Technical College Student Enrollment and Outcomes Report, FY 2019

Certificate-seeking Students				
	(Program Length)			
	0-599 hours	600-899 hours	900+ hours	Total
Membership Hours	32,516	3,615	120,994	157,125
Headcount				510
Sum of Individual Program Headcounts (allowing enrollment in multiple programs) †	211	31	330	572
Still Enrolled	56	8	130	194
Graduates	90	11	86	187
Non-graduates	65	12	114	191
Graduation Rate	58%	48%	43%	49%
Non-graduate Completers ("Early Hires") ‡	13	3	42	58
Allowable Subtractions	13	5	24	42
Withdrawn and Enrolled in Another Program	8	3	8	19
Unavailable to Earn a Credential	5	2	16	23
Completion Rate (utilizing COE standards)	73%	78%	73%	73%
Placed Students (includes Non-graduate Completers)	89	14	114	217
Related Employment	61	5	101	167
Military Service	0	0	0	0
Continuing Education	28	9	13	50
Allowable Subtractions	6	0	8	14
Awaiting Licensure	3	0	2	5
Unavailable for Employment	1	0	0	1
Refused Employment	2	0	6	8
Unplaced Students	8	0	6	14
Placement Rate (utilizing COE standards)	92%	100%	95%	94%
Graduates who Passed a Req'd Licensure Exam	45	0	37	82
Graduates who Took a Req'd Licensure Exam	45	0	37	82
Licensure Rate (utilizing COE standards)	100%	--	100%	100%
Weighted Average Certificate Length (hours)				627

Secondary Students				
	(Hours Accrued)			
	0-599 hours	600-899 hours	900+ hours	Total
Membership Hours	29,657	2,088	3,336	35,081
Headcount	199	3	3	205
Secondary Graduates (program length)	25	0	5	30
% Secondary Students Earning Certificate				15%

Postsecondary Membership Hours	193,147	Secondary Membership Hours	35,081
Distinct Postsecondary Headcount	841	Distinct Secondary Headcount	205

Short-term Occupational Training §	
<i>Job Upgrade</i>	
Membership Hours	4,578
Headcount	42
Additional Program Graduates	4
<i>Continuing Occupational Education</i>	
Membership Hours	5,528
Headcount	82
Average Length of Training (hours)	82

Students Enrolled in Other Training	
Membership Hours	25,916
Headcount	289
Basic Skills Students	126
Personal Interest Students	155
Job Re-entry Students	0
Senior Citizens	8

* Some totals herein may not equal the sum of their parts due to rounding error.

† Certificate-seeking students are counted once for each accredited program in which they enroll. Hence, a student completing one program and enrolling in a second in the same year (e.g., completing CNA then enrolling in EMT) is counted twice.

‡ Non-graduate completers, under direction from COE, are students who exit a program without obtaining a credential but who obtain employment in a field related to instruction consequent to the students' studies. This also includes students leaving a program unsuccessfully but articulating to another institution of higher education, allowing students' coursework to fulfill program requirements elsewhere.

§ Job Upgrade students are currently employed in a field related to instruction and enroll in only part of an accredited program with the intent to advance in the workplace. Continuing Occupational Education students are also employed but enroll in stand-alone courses with the intent to maintain employment (e.g., regular re-licensure).

|| Secondary headcounts are stratified by the hours accrued within FY 2019. Secondary graduates are stratified by program length, irrespective of when a student's hours were accrued. Some students began programs and accrued hours in FY 2018 but completed their certificates in FY 2019. Hence, secondary graduates in a program length stratification may be greater than the headcount of students completing the specified number of hours during FY 2019.

Appendix A9: Preliminary Uintah Basin Technical College Student Enrollment and Outcomes Report, FY 2019

Certificate-seeking Students					
	(Program Length)				
	0-599 Hours	600-899 hours	900+ hours	Incarcerated Students	Total
Membership Hours	44,641	23,287	56,494	4,680	129,102
Headcount				24	466
Sum of Individual Program Headcounts (allowing enrollment in multiple programs) †	281	76	114	24	495
Still Enrolled	32	23	30	6	91
Graduates	228	45	64	17	354
Non-graduates	21	8	20	1	50
Graduation Rate	92%	85%	76%	94%	88%
Non-graduate Completers ("Early Hires") ‡	10	6	8	0	24
Allowable Subtractions	1	0	2	0	3
<i>Withdrew and Enrolled in Another Program</i>	1	0	0	0	1
<i>Unavailable to Earn a Credential</i>	0	0	2	0	2
Completion Rate (utilizing COE standards)	96%	96%	88%	94%	94%
Placed Students (includes Non-graduate Completers)	192	38	52	0	282
<i>Related Employment</i>	168	26	44	0	238
<i>Military Service</i>	0	0	0	0	0
<i>Continuing Education</i>	24	12	8	0	44
Allowable Subtractions	0	3	1	17	21
<i>Awaiting Licensure</i>	0	1	1	0	2
<i>Unavailable for Employment</i>	0	2	0	17	19
<i>Refused Employment</i>	0	0	0	0	0
Unplaced Students	46	10	19	0	75
Placement Rate (utilizing COE standards)	81%	79%	73%	--	79%
Graduates who Passed a Req'd Licensure Exam	61	0	17	0	78
Graduates who Took a Req'd Licensure Exam	61	0	17	0	78
Licensure Rate (utilizing COE standards)	100%	--	100%	--	100%
Weighted Average Certificate Length (hours)					408

Short-term Occupational Training §	
<i>Job Upgrade</i>	
Membership Hours	5,673
Headcount	43
<i>Continuing Occupational Education</i>	
Membership Hours	44,691
Headcount	1,647
Average Length of Training (hours)	30

Students Enrolled in Other Training	
Membership Hours	29,296
Headcount	277
<i>Basic Skills Students</i>	52
<i>Personal Interest Students</i>	223
<i>Job Re-entry Students</i>	1
<i>Senior Citizens</i>	1

* Some totals herein may not equal the sum of their parts due to rounding error.

† Certificate-seeking students are counted once for each accredited program in which they enroll. Hence, a student completing one program and enrolling in a second in the same year (e.g., completing CNA then enrolling in EMT) is counted twice.

‡ Non-graduate completers, under direction from COE, are students who exit a program without obtaining a credential but who obtain employment in a field related to instruction

consequent to the students' studies. This also includes students leaving a program unsuccessfully but articulating to another institution of higher education, allowing students' coursework to fulfill program requirements elsewhere.

§ Job Upgrade students are currently employed in a field related to instruction and enroll in only *part* of an accredited program with the intent to advance in the workplace. Continuing Occupational Education students are also employed but enroll in stand-alone courses with the intent to maintain employment (e.g., regular re-licensure).

|| Secondary *headcounts* are stratified by the hours accrued within FY 2019. Secondary *graduates* are stratified by program length, irrespective of when a student's hours were accrued. Some students began programs and accrued hours in FY 2018 but completed their certificates in FY 2019. Hence, secondary graduates in a program length stratification may be greater than the headcount of students completing the specified number of hours during FY 2019.

Secondary Students				
	(Hours Accrued)			
	0-599 hours	600-899 hours	900+ hours	Total
Membership Hours	233,638	21,370	8,116	263,124
Headcount	1,604	30	8	1,642
Secondary Graduates (program length)	144	60	16	220
% Secondary Students Earning Certificate				13%

Postsecondary Membership Hours	208,761	Secondary Membership Hours	263,124
Distinct Postsecondary Headcount	2,356	Distinct Secondary Headcount	1,642

Appendix B1: Preliminary Bridgerland Technical College Performance-based Funding Metrics and FY 2015-19 Attainment

Bridgerland Technical College

	Weighting per Unit	Multiplie	2015 Attainme	Score	2016 Attainme	Score	2017 Attainme	Score	2018 Attainme	Score	2019 Attainme	Score	
Certificate Programs (30%)													
COE-approved Program Graduates (program lengths)													
≤ 599 Hours	1.00		412	412	474	474	464	464	277	277	360	360	
600 – 899 Hours	3.00		104	312	36	108	88	264	96	288	125	375	
≥ 900 Hours	5.00		265	1,325	277	1,385	295	1,475	370	1,850	415	2,075	
Additional Points for Graduates from High Demand/High Impact Programs			1.00	165	165	163	163	198	198	268	268	538	538
Category Total				2,214		2,130		2,401		2,683		3,348	
Short-term Occupational Training (10%)													
Job Upgrade and Continuing Occupational Education Course Completers (course lengths)													
≥ 60 Hours	0.20		387	77	264	53	190	38	150	30	257	51	
< 60 Hours	0.10		1,399	140	1,573	157	1,526	153	1,265	127	1,179	118	
Category Total				217		210		191		157		169	
Secondary Completion (15%)													
Additional Points for Secondary Program Graduates (program lengths)													
≤ 599 Hours	0.25		-	-	-	-	4	1	45	11	79	20	
600 – 899 Hours	0.50		-	-	-	-	-	-	-	-	1	1	
≥ 900 Hours	1.00		1	1	-	-	4	4	9	9	18	18	
% of Class of 2019 Enrollees who Earned Cert. before HS Graduation		200	0%	-	0%	-	1%	1	2%	4	5%	9	
% of Class of 2018 Enrollees who Earned Cert. before/within 1 yr. of HS Graduation		100	4%	4	4%	4	3%	3	5%	5	8%	8	
Category Total				5		4		10		30		56	
Placement (25%)													
Total Certificate-seeking Student Placements			1.00	545	545	701	701	723	723	749	749	644	644
Related Employment				396		504		553		628		509	
Military Service				1		-		1		-		1	
Continuing Education				148		197		169		121		134	
Additional Points for Under-served/At-risk Student Placements			0.50	177	89	216	108	254	127	205	103	88	44
Additional Points for Placements from High Demand/High Impact Programs			1.00	152	152	209	209	223	223	271	271	458	458
Certificate-seeking Student Placement Rate (includes Graduates and Early Hires)			100	84%	84	86%	86	81%	81	90%	90	81%	81
Category Total				870		1,104		1,154		1,213		1,227	
Efficiency (20%)													
Certificate-seeking Student Graduation Rates (program lengths)													
≤ 599 Hours		50	98%	49	88%	44	93%	47	86%	43	82%	41	
600 – 899 Hours		75	65%	49	59%	44	67%	50	55%	41	69%	52	
≥ 900 Hours		100	70%	70	70%	70	50%	50	51%	51	59%	59	
Certificate-seeking Graduates per FTE			50	1.35	68	1.25	62	1.22	61	1.00	50	1.09	53
Certificate-seeking Graduates				780		787		839		743		802	
Certificate-seeking Membership Hours				518,915		566,720		616,982		665,472		682,795	
Category Total				235		221		208		185		205	

* Category totals may not equal the sum of their parts due to rounding error.

Appendix B2: Preliminary Davis Technical College Performance-based Funding Metrics and FY 2015-19 Attainment

Davis Technical College

	Weighting per Unit	Multiple	2015		2016		2017		2018		2019		
			Attainment	Score	Attainment	Score	Attainment	Score	Attainment	Score	Attainment	Score	
Certificate Programs (30%)													
COE-approved Program Graduates (program lengths)													
≤ 599 Hours	1.00		589	589	490	490	644	644	532	532	685	685	
600 – 899 Hours	3.00		173	519	211	633	179	537	176	528	192	576	
≥ 900 Hours	5.00		369	1,845	460	2,300	580	2,900	591	2,955	588	2,940	
Additional Points for Graduates from High Demand/High Impact Programs			201	201	221	221	243	243	251	251	736	736	
Category Total			3,154		3,644		4,324		4,266		4,937		
Short-term Occupational Training (10%)													
Job Upgrade and Continuing Occupational Education Course Completers (course lengths)													
≥ 60 Hours	0.20		140	28	192	38	107	21	141	28	17	3	
< 60 Hours	0.10		417	42	551	55	637	64	688	69	732	73	
Category Total			70		94		85		97		77		
Secondary Completion (15%)													
Additional Points for Secondary Program Graduates (program lengths)													
≤ 599 Hours	0.25		165	41	175	44	209	52	147	37	216	54	
600 – 899 Hours	0.50		21	11	44	22	24	12	40	20	40	20	
≥ 900 Hours	1.00		9	9	14	14	20	20	31	31	24	24	
% of Class of 2019 Enrollees who Earned Cert. before HS Graduation		200	22%	45	29%	58	24%	47	24%	47	22%	43	
% of Class of 2018 Enrollees who Earned Cert. before/within 1 yr. of HS Graduation		100	28%	28	38%	38	42%	42	38%	38	38%	38	
Category Total			134		175		174		173		179		
Placement (25%)													
Total Certificate-seeking Student Placements			1.00	984	984	1,021	1,021	982	982	1,000	1,000	830	830
Related Employment				782		842		773		789		589	
Military Service				1		4		6		3		3	
Continuing Education				201		175		203		208		238	
Additional Points for Under-served/At-risk Student Placements			0.50	343	172	374	187	388	194	399	200	129	65
Additional Points for Placements from High Demand/High Impact Programs			1.00	283	283	302	302	282	282	325	325	594	594
Certificate-seeking Student Placement Rate (includes Graduates and Early Hires)			100	88%	88	88%	88	82%	82	85%	85	68%	68
Category Total				1,527		1,598		1,540		1,610		1,557	
Efficiency (20%)													
Certificate-seeking Student Graduation Rates (program lengths)													
≤ 599 Hours		50	82%	41	79%	40	78%	39	77%	38	84%	42	
600 – 899 Hours		75	55%	41	58%	43	57%	43	64%	48	57%	43	
≥ 900 Hours		100	42%	42	43%	43	43%	43	39%	39	49%	49	
Certificate-seeking Graduates per FTE			50	0.92	46	0.87	43	1.09	54	0.95	47	1.05	53
Certificate-seeking Graduates				936		928		1,150		1,081		1,182	
Certificate-seeking Membership Hours				915,287		960,423		953,826		1,027,271		1,012,891	
Category Total				170		170		179		173		186	

* Category totals may not equal the sum of their parts due to rounding error.

Appendix B3: Preliminary Dixie Technical College Performance-based Funding Metrics and FY 2015-19 Attainment

Dixie Technical College

	Weighting per Unit	Multiple	2015		2016		2017		2018		2019	
			Attainment	Score	Attainment	Score	Attainment	Score	Attainment	Score	Attainment	Score
Certificate Programs (30%)												
COE-approved Program Graduates (program lengths)												
≤ 599 Hours	1.00		99	99	107	107	140	140	138	138	150	150
600 – 899 Hours	3.00		33	99	39	117	50	150	58	174	75	225
≥ 900 Hours	5.00		60	300	108	540	102	510	110	550	143	715
Additional Points for Graduates from High Demand/High Impact Programs			3	3	34	34	28	28	55	55	284	284
Category Total			501		798		828		917		1,374	
Short-term Occupational Training (10%)												
Job Upgrade and Continuing Occupational Education Course Completers (course lengths)												
≥ 60 Hours	0.20		184	37	203	41	40	8	18	4	125	25
< 60 Hours	0.10		5,908	591	6,424	642	3,608	361	4,175	418	5,119	512
Category Total			628		683		369		421		537	
Secondary Completion (15%)												
Additional Points for Secondary Program Graduates (program lengths)												
≤ 599 Hours	0.25		51	13	44	11	62	16	48	12	48	12
600 – 899 Hours	0.50		5	3	3	2	4	2	6	3	6	3
≥ 900 Hours	1.00		3	3	4	4	11	11	7	7	14	14
% of Class of 2019 Enrollees who Earned Cert. before HS Graduation		200	9%	18	9%	18	8%	16	6%	12	25%	50
% of Class of 2018 Enrollees who Earned Cert. before/within 1 yr. of HS Graduation		100	7%	7	13%	13	12%	12	11%	11	10%	10
Category Total			43		47		57		45		90	
Placement (25%)												
Total Certificate-seeking Student Placements			144	144	161	161	243	243	291	291	287	287
Related Employment			134		140		221		261		258	
Military Service			-		-		-		1		2	
Continuing Education			10		21		22		29		27	
Additional Points for Under-served/At-risk Student Placements			68	34	56	28	93	47	140	70	59	30
Additional Points for Placements from High Demand/High Impact Programs			18	18	31	31	42	42	68	68	252	252
Certificate-seeking Student Placement Rate (includes Graduates and Early Hires)		100	96%	96	92%	92	94%	94	88%	88	84%	84
Category Total			292		312		426		517		652	
Efficiency (20%)												
Certificate-seeking Student Graduation Rates (program lengths)												
≤ 599 Hours		50	95%	47	100%	50	91%	45	84%	42	92%	46
600 – 899 Hours		75	73%	54	85%	64	44%	33	34%	26	42%	32
≥ 900 Hours		100	56%	56	73%	73	56%	56	61%	61	65%	65
Certificate-seeking Graduates per FTE		50	0.62	31	0.96	48	1.02	51	1.01	51	0.96	48
Certificate-seeking Graduates			133		203		215		245		296	
Certificate-seeking Membership Hours			191,529		190,508		189,808		217,931		276,363	
Category Total			189		235		185		179		190	

* Category totals may not equal the sum of their parts due to rounding error.

Appendix B4: Preliminary Mountainland Technical College Performance-based Funding Metrics and FY 2015-19 Attainment

Mountainland Technical College

	Weighting per Unit	Multiple	2015		2016		2017		2018		2019	
			Attainment	Score	Attainment	Score	Attainment	Score	Attainment	Score	Attainment	Score
Certificate Programs (30%)												
COE-approved Program Graduates (program lengths)												
≤ 599 Hours	1.00		1,359	1,359	1,225	1,225	961	961	876	876	1,138	1,138
600 – 899 Hours	3.00		127	381	188	564	261	783	331	993	488	1,464
≥ 900 Hours	5.00		266	1,330	321	1,605	703	3,515	505	2,525	454	2,270
Additional Points for Graduates from High Demand/High Impact Programs		1.00	403	403	401	401	464	464	300	300	1,025	1,025
Category Total			3,473		3,795		5,723		4,694		5,897	
Short-term Occupational Training (10%)												
Job Upgrade and Continuing Occupational Education Course Completers (course lengths)												
≥ 60 Hours	0.20		286	57	406	81	441	88	482	96	-	-
< 60 Hours	0.10		43	4	10	1	3	-	4	-	14	1
Category Total			62		82		89		97		1	
Secondary Completion (15%)												
Additional Points for Secondary Program Graduates (program lengths)												
≤ 599 Hours	0.25		580	145	504	126	572	143	481	120	702	176
600 – 899 Hours	0.50		31	16	87	44	83	42	91	46	135	68
≥ 900 Hours	1.00		12	12	20	20	113	113	74	74	23	23
% of Class of 2019 Enrollees who Earned Cert. before HS Graduation		200	61%	121	56%	111	58%	116	52%	104	48%	96
% of Class of 2018 Enrollees who Earned Cert. before/within 1 yr. of HS Graduation		100	69%	69	73%	73	70%	70	72%	72	69%	69
Category Total			363		374		484		416		432	
Placement (25%)												
Total Certificate-seeking Student Placements		1.00	758	758	747	747	999	999	826	826	412	412
Related Employment			591		621		845		695		334	
Military Service			-		-		1		1		1	
Continuing Education			167		126		153		130		77	
Additional Points for Under-served/At-risk Student Placements		0.50	175	88	191	96	290	145	236	118	80	40
Additional Points for Placements from High Demand/High Impact Programs		1.00	131	131	143	143	361	361	189	189	250	250
Certificate-seeking Student Placement Rate (includes Graduates and Early Hires)		100	87%	87	90%	90	88%	88	80%	80	47%	47
Category Total			1,064		1,076		1,593		1,213		749	
Efficiency (20%)												
Certificate-seeking Student Graduation Rates (program lengths)												
≤ 599 Hours		50	90%	45	92%	46	91%	46	92%	46	88%	44
600 – 899 Hours		75	90%	68	89%	67	75%	56	75%	56	57%	43
≥ 900 Hours		100	83%	83	85%	85	78%	78	73%	73	78%	78
Certificate-seeking Graduates per FTE		50	1.91	95	1.84	92	1.83	91	1.69	85	1.40	70
Certificate-seeking Graduates			1,129		1,123		1,157		1,066		1,213	
Certificate-seeking Membership Hours			533,091		549,676		569,099		566,848		779,769	
Category Total			291		289		271		260		235	

* Category totals may not equal the sum of their parts due to rounding error.

Appendix B5: Preliminary Ogden-Weber Technical College Performance-based Funding Metrics and FY 2015-19 Attainment

Ogden-Weber Technical College

	Weighting per Unit	Multiple	2015		2016		2017		2018		2019	
			Attainment	Score	Attainment	Score	Attainment	Score	Attainment	Score	Attainment	Score
Certificate Programs (30%)												
COE-approved Program Graduates (program lengths)												
≤ 599 Hours	1.00		685	685	827	827	369	369	364	364	366	366
600 – 899 Hours	3.00		139	417	122	366	133	399	101	303	146	438
≥ 900 Hours	5.00		416	2,080	399	1,995	389	1,945	389	1,945	439	2,195
Additional Points for Graduates from High Demand/High Impact Programs			159	159	230	230	140	140	156	156	575	575
Category Total			3,341		3,418		2,853		2,768		3,574	
Short-term Occupational Training (10%)												
Job Upgrade and Continuing Occupational Education Course Completers (course lengths)												
≥ 60 Hours	0.20		79	16	90	18	622	124	565	113	271	54
< 60 Hours	0.10		154	15	161	16	511	51	463	46	411	41
Category Total			31		34		176		159		95	
Secondary Completion (15%)												
Additional Points for Secondary Program Graduates (program lengths)												
≤ 599 Hours	0.25		84	21	138	35	104	26	119	30	97	24
600 – 899 Hours	0.50		12	6	10	5	9	5	6	3	13	7
≥ 900 Hours	1.00		16	16	10	10	20	20	22	22	30	30
% of Class of 2019 Enrollees who Earned Cert. before HS Graduation		200	12%	25	14%	29	13%	26	14%	27	12%	23
% of Class of 2018 Enrollees who Earned Cert. before/within 1 yr. of HS Graduation		100	22%	22	21%	21	24%	24	20%	20	25%	25
Category Total			90		99		100		103		109	
Placement (25%)												
Total Certificate-seeking Student Placements			995	995	1,111	1,111	855	855	1,105	1,105	1,016	1,016
Related Employment			848		949		729		981		924	
Military Service			3		3		9		6		-	
Continuing Education			144		159		117		118		92	
Additional Points for Under-served/At-risk Student Placements			398	199	475	238	378	189	484	242	234	117
Additional Points for Placements from High Demand/High Impact Programs			170	170	206	206	211	211	311	311	814	814
Certificate-seeking Student Placement Rate (includes Graduates and Early Hires)		100	91%	91	93%	93%	82%	82	93%	93	85%	85
Category Total			1,455		1,648		1,347		1,751		2,032	
Efficiency (20%)												
Certificate-seeking Student Graduation Rates (program lengths)												
≤ 599 Hours		50	92%	46	83%	42	83%	42	77%	39	72%	36
600 – 899 Hours		75	40%	30	29%	22	41%	31	22%	17	25%	19
≥ 900 Hours		100	47%	47	38%	38	38%	38	31%	31	37%	37
Certificate-seeking Graduates per FTE		50	1.33	66	1.38	69	1.01	51	0.86	43	0.99	49
Certificate-seeking Graduates			1,128		1,190		758		707		811	
Certificate-seeking Membership Hours			764,225		778,644		673,846		738,108		740,193	
Category Total			190		171		161		129		141	

* Category totals may not equal the sum of their parts due to rounding error.

Appendix B6: Preliminary Southwest Technical College Performance-based Funding Metrics and FY 2015-19 Attainment

Southwest Technical College

	Weighting per Unit	Multiple	2015		2016		2017		2018		2019	
			Attainment	Score	Attainment	Score	Attainment	Score	Attainment	Score	Attainment	Score
Certificate Programs (30%)												
COE-approved Program Graduates (program lengths)												
≤ 599 Hours	1.00		142	142	253	253	223	223	222	222	233	233
600 – 899 Hours	3.00		44	132	58	174	48	144	87	261	109	327
≥ 900 Hours	5.00		25	125	30	150	48	240	62	310	109	545
Additional Points for Graduates from High Demand/High Impact Programs			48	48	31	31	59	59	91	91	225	225
Category Total			447		608		666		884		1,330	
Short-term Occupational Training (10%)												
Job Upgrade and Continuing Occupational Education Course Completers (course lengths)												
≥ 60 Hours	0.20		21	4	38	8	70	14	69	14	86	17
< 60 Hours	0.10		85	9	304	30	619	62	407	41	672	67
Category Total			13		38		76		55		84	
Secondary Completion (15%)												
Additional Points for Secondary Program Graduates (program lengths)												
≤ 599 Hours	0.25		34	9	118	30	59	15	58	15	51	13
600 – 899 Hours	0.50		-	-	-	-	-	-	-	-	1	1
≥ 900 Hours	1.00		-	-	1	1	1	1	-	-	1	1
% of Class of 2019 Enrollees who Earned Cert. before HS Graduation		200	5%	10	15%	29	14%	29	10%	20	10%	21
% of Class of 2018 Enrollees who Earned Cert. before/within 1 yr. of HS Graduation		100	7%	7	9%	9	16%	16	17%	17	14%	14
Category Total			25		69		60		52		49	
Placement (25%)												
Total Certificate-seeking Student Placements			162	162	191	191	219	219	260	260	181	181
Related Employment			139		151		175		206		124	
Military Service			-		-		1		-		2	
Continuing Education			23		40		43		54		55	
Additional Points for Under-served/At-risk Student Placements			84	42	103	52	110	55	142	71	27	14
Additional Points for Placements from High Demand/High Impact Programs			47	47	32	32	54	54	77	77	150	150
Certificate-seeking Student Placement Rate (includes Graduates and Early Hires)		100	83%	83	93%	93	87%	87	86%	86	48%	48
Category Total			334		368		415		494		392	
Efficiency (20%)												
Certificate-seeking Student Graduation Rates (program lengths)												
≤ 599 Hours		50	88%	44	90%	45	94%	47	91%	46	91%	46
600 – 899 Hours		75	76%	57	83%	62	63%	47	70%	53	78%	58
≥ 900 Hours		100	37%	37	49%	49	47%	47	58%	58	73%	73
Certificate-seeking Graduates per FTE		50	1.33	66	1.89	95	1.62	81	1.66	83	1.87	94
Certificate-seeking Graduates				177		222		259		313		398
Certificate-seeking Membership Hours				120,101		105,525		143,500		169,365		191,300
Category Total			204		250		222		240		271	

* Category totals may not equal the sum of their parts due to rounding error.

Appendix B7: Preliminary Tooele Technical College Performance-based Funding Metrics and FY 2015-19 Attainment

Tooele Technical College

	Weighting per Unit	Multiple	2015		2016		2017		2018		2019	
			Attainment	Score	Attainment	Score	Attainment	Score	Attainment	Score	Attainment	Score
Certificate Programs (30%)												
COE-approved Program Graduates (program lengths)												
≤ 599 Hours	1.00		140	140	162	162	147	147	108	108	119	119
600 – 899 Hours	3.00		17	51	13	39	18	54	19	57	11	33
≥ 900 Hours	5.00		49	245	53	265	56	280	69	345	91	455
Additional Points for Graduates from High Demand/High Impact Programs			58	58	66	66	63	63	82	82	133	133
Category Total			494		532		544		592		740	
Short-term Occupational Training (10%)												
Job Upgrade and Continuing Occupational Education Course Completers (course lengths)												
≥ 60 Hours	0.20		9	2	30	6	25	5	16	3	45	9
< 60 Hours	0.10		12	1	22	2	33	3	54	5	26	3
Category Total			3		8		8		9		12	
Secondary Completion (15%)												
Additional Points for Secondary Program Graduates (program lengths)												
≤ 599 Hours	0.25		11	3	17	4	14	4	12	3	25	6
600 – 899 Hours	0.50		-	-	1	1	-	-	-	-	-	-
≥ 900 Hours	1.00		1	1	1	1	-	-	2	2	5	5
% of Class of 2019 Enrollees who Earned Cert. before HS Graduation		200	12%	24	16%	31	9%	19	12%	24	14%	29
% of Class of 2018 Enrollees who Earned Cert. before/within 1 yr. of HS Graduation		100	26%	26	35%	35	26%	26	24%	24	31%	31
Category Total			54		72		48		53		72	
Placement (25%)												
Total Certificate-seeking Student Placements			195	195	201	201	228	228	220	220	217	217
Related Employment			91		85		138		143		167	
Military Service			-		-		-		1		-	
Continuing Education			104		116		90		76		50	
Additional Points for Under-served/At-risk Student Placements			103	52	108	54	115	58	105	53	29	15
Additional Points for Placements from High Demand/High Impact Programs			50	50	57	57	75	75	95	95	160	160
Certificate-seeking Student Placement Rate (includes Graduates and Early Hires)		100	92%	92	97%	97	97%	97	99%	99	94%	94
Category Total			389		409		458		466		485	
Efficiency (20%)												
Certificate-seeking Student Graduation Rates (program lengths)												
≤ 599 Hours		50	94%	47	81%	41	60%	30	63%	31	58%	29
600 – 899 Hours		75	100%	75	55%	41	62%	47	58%	43	48%	36
≥ 900 Hours		100	63%	63	66%	66	40%	40	44%	44	43%	43
Certificate-seeking Graduates per FTE		50	1.58	79	1.71	85	1.57	78	1.25	63	1.07	54
Certificate-seeking Graduates			194		209		207		182		187	
Certificate-seeking Membership Hours			110,803		110,254		118,875		130,635		157,125	
Category Total			263		233		195		182		161	

* Category totals may not equal the sum of their parts due to rounding error.

Appendix B8: Preliminary Uintah Basin Technical College Performance-based Funding Metrics and FY 2015-19 Attainment

Uintah Basin Technical College

	Weighting per Unit	Multiple	2015		2016		2017		2018		2019		
			Attainment	Score	Attainment	Score	Attainment	Score	Attainment	Score	Attainment	Score	
Certificate Programs (30%)													
COE-approved Program Graduates (program lengths)													
≤ 599 Hours	1.00		689	689	422	422	399	399	425	425	372	372	
600 – 899 Hours	3.00		51	153	86	258	46	138	33	99	105	315	
≥ 900 Hours	5.00		41	205	63	315	77	385	84	420	80	400	
Additional Points for Graduates from High Demand/High Impact Programs			1.00	197	197	152	152	136	136	134	134	364	364
Category Total				1,244		1,147		1,058		1,078		1,451	
Short-term Occupational Training (10%)													
Job Upgrade and Continuing Occupational Education Course Completers (course lengths)													
≥ 60 Hours	0.20		90	18	57	11	45	9	31	6	33	7	
< 60 Hours	0.10		2,703	270	1,943	194	1,595	160	1,771	177	1,606	161	
Category Total				288		206		169		183		167	
Secondary Completion (15%)													
Additional Points for Secondary Program Graduates (program lengths)													
≤ 599 Hours	0.25		115	29	131	33	122	31	153	38	144	36	
600 – 899 Hours	0.50		19	10	26	13	32	16	28	14	60	30	
≥ 900 Hours	1.00		-	-	11	11	3	3	7	7	16	16	
% of Class of 2019 Enrollees who Earned Cert. before HS Graduation		200	19%	38	18%	35	20%	40	22%	44	21%	43	
% of Class of 2018 Enrollees who Earned Cert. before/within 1 yr. of HS Graduation		100	19%	19	21%	21	20%	20	22%	22	25%	25	
Category Total				96		114		110		126		149	
Placement (25%)													
Total Certificate-seeking Student Placements			1.00	570	570	312	312	319	319	335	335	282	282
Related Employment				545		273		288		304		238	
Military Service				-		-		-		-		-	
Continuing Education				25		39		31		31		44	
Additional Points for Under-served/At-risk Student Placements			0.50	139	70	92	46	102	51	78	39	34	17
Additional Points for Placements from High Demand/High Impact Programs			1.00	124	124	97	97	104	104	94	94	162	162
Certificate-seeking Student Placement Rate (includes Graduates and Early Hires)			100	95%	95	87%	87	91%	91	95%	95	79%	79
Category Total				859		542		565		563		540	
Efficiency (20%)													
Certificate-seeking Student Graduation Rates (program lengths)													
≤ 599 Hours		50	96%	48	89%	44	87%	44	95%	48	92%	46	
600 – 899 Hours		75	47%	35	58%	43	56%	42	56%	42	85%	64	
≥ 900 Hours		100	57%	57	55%	55	46%	46	68%	68	76%	76	
Certificate-seeking Graduates per FTE			50	2.95	147	1.81	90	1.96	98	2.37	119	2.47	123
Certificate-seeking Graduates				647		403		365		354		354	
Certificate-seeking Membership Hours				197,634		200,531		167,246		134,206		129,102	
Category Total				287		233		230		276		309	

* Category totals may not equal the sum of their parts due to rounding error.

